

Converting Colors

YIQ(215.1120, 20.3560, 5.5400)

Have a look what the booklet for
YIQ(215.1120, 20.3560, 5.5400)
contains.

YIQ(215.1120, 20.3560, 5.5400)	3
<i>Conversions</i>	4
<i>Details</i>	6
<i>Harmonies</i>	12
<i>Previews</i>	24
<i>Color Blindness Simulation</i>	28
<i>CSS Examples</i>	31

Color

**YIQ(215.1120, 20.3560,
5.5400)**

Conversions

Conversions Part 1

Format	Color
Hex	EECECA
RGB	238, 206, 202
RGB Percent	93%, 81%, 79%
CMY	0.0666, 0.1922, 0.2078
CMYK	0.00, 0.13, 0.15, 0.07
HSL	7°, 51%, 86%
HSV	7°, 15%, 93%
XYZ	67.9975, 66.5818, 65.1581
YIQ	215.1120, 20.3560, 5.5400

Conversions

Conversions Part 2

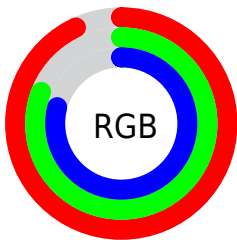
Format	Color
R _Y B	238, 207, 202
Decimal	15650506
CIE Lab	85.29, 10.58, 6.10
CIE LCh	85, 12.215, 29.977
Yxy	66.5818, 0.3404, 0.3333
Android (android.graphics.Color)	4293840586 (0xFFEECECA)
YUV	215.1120, -6.4642, 20.0728
Hunter-Lab	81.5977, 5.9528, 9.7736

Details

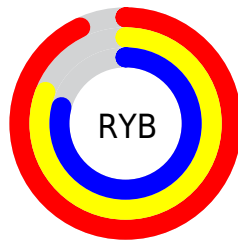
The YIQ color **215.1120, 20.3560, 5.5400** is a light color, and the websafe version is hex **FFCCCC**. A complement of this color would be **224.8880, -20.3560, -5.5400**, and the grayscale version is **215.0000, -0.0000, -0.0000**.

A 20% lighter version of the original color is **255.0000, -0.0000, -0.0000**, and **160.5140, 19.1640, 5.1160** is the 20% darker color. If you saturate the color by 10%, you get **200.0490, 33.8350, 9.0590**, and if you desaturate by 10%, it is **230.1750, 6.8770, 2.0210**.

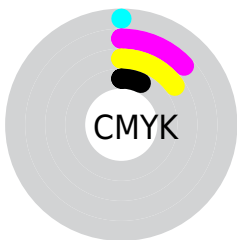
Distribution



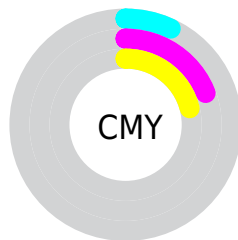
- Red (93%)
- Green (81%)
- Blue (79%)



- Red (93%)
- Yellow (81%)
- Blue (79%)



- Cyan (0%)
- Magenta (13%)
- Yellow (15%)
- Black (7%)



- Cyan (7%)
- Magenta (19%)
- Yellow (21%)

Brightness & Saturation Gradients

These gradients show how the YIQ color 215.1120, 20.3560, 5.5400 changes by changing the brightness by 10 percent. The first figure shows a shift by +10% for each color and the second figure -10%.

Similar to the brightness gradients but the following saturation gradients show a change of the YIQ color 215.1120, 20.3560, 5.5400 by changing the saturation by 10% instead.

■ 215.1120, 20.3560,
5.5400

■ 215.1120, 20.3560,
5.5400

255.0000, -0.0000,
-0.0000

■ 187.2260, 20.0350,
5.8510

■ 160.5140, 19.1640,
5.1160

■ 134.2150, 18.5680,
4.9040

■ 108.6170, 17.3760,
4.4800

■ 84.4320, 16.4590,
4.5790

■ 60.8340, 15.2670,
4.1550

■ 38.6490, 14.3500,

4.2540

■ 16.6060, 15.9090,
3.5330

■ 0.0000, 0.0000,
0.0000

■ 215.1120, 20.3560,
5.5400

■ 215.1120, 20.3560,
5.5400

■ 200.0490, 33.8350,
9.0590

■ 230.1750, 6.8770,
2.0210

■ 184.9860, 47.3140,
12.5780

■ 245.2380, -6.6020,
-1.4980

■ 169.4500, 60.7470,
16.9310

■ 249.9170,
-10.1320, -3.6040

■ 154.3870, 74.2260,
20.4500

■ 139.3240, 87.7050,
23.9690

■ 124.2610,
101.1840, 27.4880

■ 109.1980,
114.6630, 31.0070

■ 94.2490, 127.8210,
34.8370

■ 86.4240, 134.6980,
36.8580

Harmonies

Analogous

The Analogous color harmony consists of three colors that are next to each other on the color wheel.



215.1810, 15.9080, 9.0600



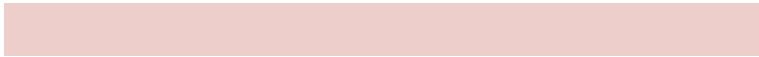
215.1120, 20.3560, 5.5400



214.3520, 19.4400, 0.1120

Triad

The Triadic color harmony groups three colors that are evenly spaced from another and form a triangle on the color wheel.



215.1120, 20.3560, 5.5400



210.3700, -7.3340, -10.2620



212.6210, -14.8100, 4.0860

Complementary

The Complementary color scheme is a pair of colors which are on the opposite of each other on the color wheel.



215.1120, 20.3560, 5.5400



224.8880, -20.3560, -5.5400

Split Complementary

Split-complementary colors differ from the complementary color scheme. The scheme consists of three colors, the original color and two neighbors of the complement color.



210.4520, -21.8240, -0.9600



215.1120, 20.3560, 5.5400



209.3350, -17.4210, -9.1730

Square

The Square scheme is like the rectangle color scheme, but the four colors are evenly spaced on the color wheel.



215.1120, 20.3560, 5.5400



211.5840, 3.8070, -8.4250



209.6920, -22.7400, -6.3880



214.4160, -3.8070, 8.4250

Rectangle

The Rectangle color scheme consists of four colors that form a rectangle on the color wheel.



215.1120, 20.3560, 5.5400



213.5040, 15.9560, -2.8280



209.6920, -22.7400, -6.3880



211.8980, -17.1480, 2.4040

Sweetspot

The Sweet Spot groups the original color and five complimentary colors.



215.1120, 20.3560, 5.5400



247.0610, 7.1980, 1.7100



216.4120, 11.1840, 17.5840



122.9790, 4.4930, 1.1730



0.0000, 0.0000, 0.0000



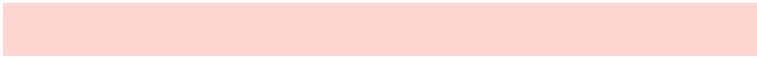
128.0000, -0.0000, -0.0000

Same Dimension

The Same Dimension uses a secret algorithm to generate beautiful new colors.



215.1120, 20.3560, 5.5400



225.6890, 26.0410, 7.1370



225.6780, 15.4060, -3.8740



112.1750, 6.8770, 2.0210



66.7560, 104.1640, 28.5480



20.2660, 31.7260, 8.7340

Inverse Universe

The Inverse Universe completely reimagines the original color for something new.



224.8880, -20.3560, -5.5400



238.3110, -26.0410, -7.1370



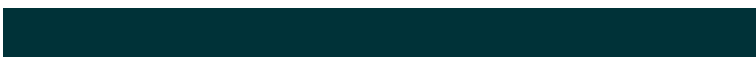
214.3220, -15.4060, 3.8740



115.8250, -6.8770, -2.0210



116.6570, -103.8890, -28.0250



35.7340, -31.7260, -8.7340

Previews

White Background



This preview shows how the YIQ color 215.1120, 20.3560, 5.5400 looks on a white background.

Color Contrast Check

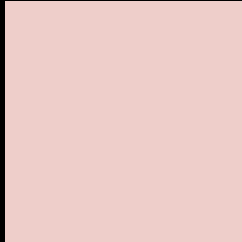
Large Text (above 18pt) WCAG AA × Fail

Any Text WCAG AA × Fail

Large Text (above 18pt) WCAG AAA × Fail

Any Text WCAG AAA × Fail

Black Background



This preview shows how the YIQ color 215.1120, 20.3560, 5.5400 looks on a black background.

Color Contrast Check

Large Text (above 18pt) WCAG AA ✓ Pass

Any Text WCAG AA ✓ Pass

Large Text (above 18pt) WCAG AAA ✓ Pass

Any Text WCAG AAA ✓ Pass

If you want to check with other color combinations, try the [Color Contrast Checker](#).

YIQ 215.1120, 20.3560, 5.5400

Background



This preview shows how black text looks on a background with the YIQ color 215.1120, 20.3560, 5.5400.



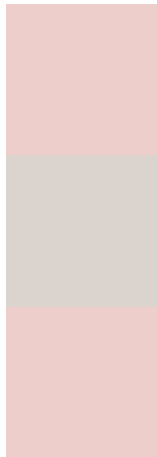
This preview shows how white text looks on a background with the YIQ color 215.1120, 20.3560,

5.5400.

Color Blindness Simulation

Color vision deficiency is a very complex topic, and I could not describe the different causes any better than Wikipedia does, so if you want to learn more, you should check out their [article about color blindness](#).

Dichromacy



Original Color

215.1120, 20.3560, 5.5400

Protanopia

213.4090, 6.0980, -0.3820

Deuteranopia

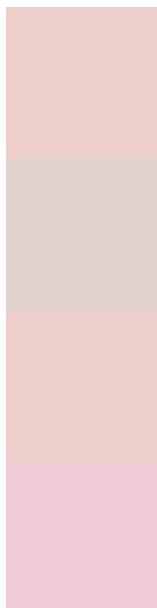
215.1120, 20.3560, 5.5400



Tritanopia

215.8870, 16.9160, 12.8200

Trichromacy



Original Color

215.1120, 20.3560, 5.5400

Protanomaly

214.2140, 11.1410, 1.8370

Deuteranomaly

215.1120, 20.3560, 5.5400

Tritanomaly

215.4910, 17.9710, 10.2190

Monochromacy



Original Color

215.1120, 20.3560, 5.5400

Achromatopsia

215.0000, -0.0000, -0.0000

Achromatomaly

215.0610, 7.1980, 1.7100

CSS Examples

Text

The CSS property to change the color of the text to YIQ 215.1120, 20.3560, 5.5400 is called "color". The color property can be set on classes, ids or directly on the HTML element.

This example shows how text in the color `rgb(238, 206, 202)` looks like.

```
.text, #text, p{  
    color:rgb(238, 206, 202)  
}
```

If you want to add a text shadow in that color use the text-shadow property, you can generate a text shadow directly with our [CSS Text Shadow Generator](#).

Here you see how black text with a 4 pixel rgb(238, 206, 202) colored shadow looks like.

```
.shadow{ text-shadow: 4px 4px 2px rgb(238, 206, 202) }
```

Border

The CSS property to change the border of an element to YIQ 215.1120, 20.3560, 5.5400 is called "border". The border property can be set on classes, ids or directly on the HTML element.

This example shows the color as border, it can be applied via the CSS property "border" or "border-color".

```
.border, #border, table{ border:4px solid rgb(238, 206, 202) }
```


If only the border color should be changed use the property `border-color`.

```
.border{ border-color:rgb(238, 206, 202) }
```

If you want to add a box shadow in that color use:

Here you see how a box with a 4 pixel `rgb(238, 206, 202)` colored shadow looks like.

```
.boxshadow{ -moz-box-shadow:4px 4px 4px  
4px rgb(238, 206, 202); -webkit-box-  
shadow:4px 4px 4px 4px rgb(238, 206, 202);  
box-shadow:4px 4px 4px 4px rgb(238, 206,  
202) }
```

Background

The CSS property to change the background color of an element to YIQ 215.1120, 20.3560, 5.5400 is called "background". The background property can be set on classes, ids or directly on the HTML element.

```
.background, #background, body{  
background: rgb(238, 206, 202) }
```

If only the background color should be changed can be used:

```
.background{ background-color: rgb(238,  
206, 202) }
```

This example shows the color as background, it is applied via the CSS property "background".

To optimize and compress your CSS code, you can use our [online CSS compressor and optimizer](#) based on csstidy. If you want to create a linear or radial gradient as background or border, check our [CSS Gradient Generator](#).

Hey! You found this booklet interesting? Support Converting Colors with the new Membership Option!

The pro membership hides all ads, plus gives you double the colors in the color bucket, and more awesome pro features!

[Learn more, Memberships starting at \\$2.50/m!](#)

**Follow me
on Twitter!**

@ConvertingColor