

Converting Colors

YIQ(216.0360, 17.5140, 1.9780)

Have a look what the booklet for
YIQ(216.0360, 17.5140, 1.9780)
contains.

- YIQ(216.0360, 17.5140, 1.9780) 3**
- Conversions* 4**
- Details* 6**
- Harmonies* 12**
- Previews* 24**
- Color Blindness Simulation* 28**
- CSS Examples* 31**

Color

**YIQ(216.0360, 17.5140,
1.9780)**

Conversions

Conversions Part 1

Format	Color
Hex	EAD2C8
RGB	234, 210, 200
RGB Percent	92%, 82%, 78%
CMY	0.0823, 0.1765, 0.2156
CMYK	0.00, 0.10, 0.15, 0.08
HSL	18°, 45%, 85%
HSV	18°, 15%, 92%
XYZ	67.4077, 67.7539, 64.1807
YIQ	216.0360, 17.5140, 1.9780

Conversions

Conversions Part 2

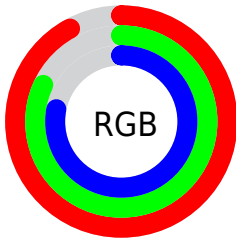
Format	Color
RYB	234, 214, 200
Decimal	15389384
CIELab	85.88, 6.74, 7.97
CIELCh	86, 10.435, 49.787
Yxy	67.7539, 0.3382, 0.3399
Android (android.graphics.Color)	4293579464 (0xFFEAD2C8)
YUV	216.0360, -7.9057, 15.7544
Hunter-Lab	82.3127, 2.1302, 11.3895

Details

The YIQ color $216.0360, 17.5140, 1.9780$ is a light color, and the websafe version is hex `CCCCCC`. A complement of this color would be $217.9640, -17.5140, -1.9780$, and the grayscale version is $216.0000, -0.0000, 0.0000$.

A 20% lighter version of the original color is $255.0000, -0.0000, -0.0000$, and $161.4380, 16.3220, 1.5540$ is the 20% darker color. If you saturate the color by 10%, you get $203.4350, 29.5720, 3.7160$, and if you desaturate by 10%, it is $228.6370, 5.4560, 0.2400$.

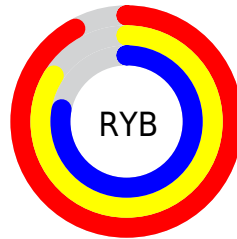
Distribution



Red (92%)

Green (82%)

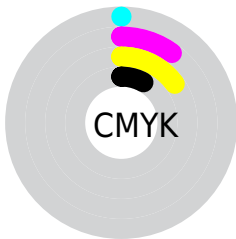
Blue (78%)



Red (92%)

Yellow (84%)

Blue (78%)

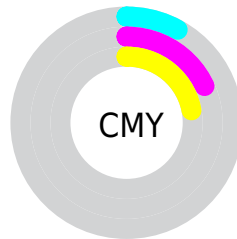


Cyan (0%)

Magenta (10%)

Yellow (15%)

Black (8%)



Cyan (8%)

Magenta (18%)

Yellow (22%)

Brightness & Saturation Gradients

These gradients show how the YIQ color 216.0360, 17.5140, 1.9780 changes by changing the brightness by 10 percent. The first figure shows a shift by +10% for each color and the second figure -10%.

Similar to the brightness gradients but the following saturation gradients show a change of the YIQ color 216.0360, 17.5140, 1.9780 by changing the saturation by 10% instead.

■ 216.0360, 17.5140,
1.9780

■ 216.0360, 17.5140,
1.9780

255.0000, -0.0000,
-0.0000

■ 188.1500, 17.1930,
2.2890

■ 161.4380, 16.3220,
1.5540

■ 135.1390, 15.7260,
1.3420

■ 109.3670, 15.0840,
1.9640

■ 85.0680, 14.4880,
1.7520

■ 61.8830, 13.5710,
1.8510

■ 39.9860, 11.7830,

1.2150

■ 18.6010, 14.3050,
-0.4390

■ 0.0000, 0.0000,
0.0000

■ 216.0360, 17.5140,
1.9780

■ 216.0360, 17.5140,
1.9780

■ 203.4350, 29.5720,
3.7160

■ 228.6370, 5.4560,
0.2400

■ 191.3070, 41.6760,
4.6200

■ 240.7650, -6.6480,
-0.6640

■ 178.7060, 53.7340,
6.3580

■ 248.7210,
-12.5160, -4.4520

■ 166.5780, 65.8380,
7.2620

■ 153.9770, 77.8960,
9.0000

■ 141.9630, 89.6790,
10.2150

■ 129.2480,
102.0580, 11.6420

■ 117.2340,
113.8410, 12.8570

■ 110.4690,
120.4890, 13.5210

Harmonies

Analogous

The Analogous color harmony consists of three colors that are next to each other on the color wheel.



216.3720, 16.6880, 5.9360



216.0360, 17.5140, 1.9780



215.2480, 13.8010, -2.3190

Triad

The Triadic color harmony groups three colors that are evenly spaced from another and form a triangle on the color wheel.



216.0360, 17.5140, 1.9780



212.0860, -12.2860, -8.6220



215.2800, -6.4200, 6.2200

Complementary

The Complementary color scheme is a pair of colors which are on the opposite of each other on the color wheel.



216.0360, 17.5140, 1.9780



217.9640, -17.5140, -1.9780

Split Complementary

Split-complementary colors differ from the complementary color scheme. The scheme consists of three colors, the original color and two neighbors of the complement color.



214.1540, -14.9930, 1.8950



216.0360, 17.5140, 1.9780



212.0300, -17.8800, -6.3600

Square

The Square scheme is like the rectangle color scheme, but the four colors are evenly spaced on the color wheel.



216.0360, 17.5140, 1.9780



212.5770, -3.4830, -8.4670



212.3660, -18.7060, -2.4020



216.5370, 3.1620, 8.7780

Rectangle

The Rectangle color scheme consists of four colors that form a rectangle on the color wheel.



216.0360, 17.5140, 1.9780



214.2150, 9.4000, -5.1600



212.3660, -18.7060, -2.4020



214.7850, -9.4000, 5.1600

Sweetspot

The Sweet Spot groups the original color and five complimentary colors.



216.0360, 17.5140, 1.9780



249.7510, 5.1350, 0.5510



212.9020, 12.5600, 14.6720



124.2670, 3.6220, 0.4380



0.0000, 0.0000, 0.0000



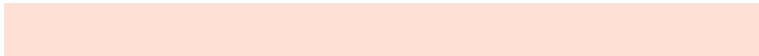
128.0000, -0.0000, -0.0000

Same Dimension

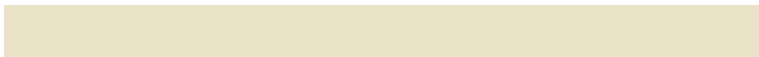
The Same Dimension uses a secret algorithm to generate beautiful new colors.



216.0360, 17.5140, 1.9780



231.9010, 22.3280, 2.8400



226.0150, 12.8390, -6.9130



111.0500, 5.7310, 0.7630



85.2300, 93.3010, 10.6530



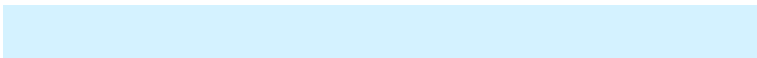
25.5380, 27.7840, 3.0800

Inverse Universe

The Inverse Universe completely reimagines the original color for something new.



217.9640, -17.5140, -1.9780



234.5120, -22.0530, -2.3170



207.9850, -12.8390, 6.9130



111.9500, -5.7310, -0.7630



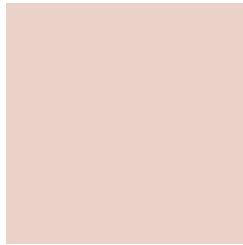
95.7700, -93.3010, -10.6530



28.4620, -27.7840, -3.0800

Previews

White Background



This preview shows how the YIQ color 216.0360, 17.5140, 1.9780 looks on a white background.

Color Contrast Check

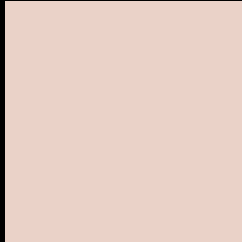
Large Text (above 18pt) WCAG AA × Fail

Any Text WCAG AA × Fail

Large Text (above 18pt) WCAG AAA × Fail

Any Text WCAG AAA × Fail

Black Background



This preview shows how the YIQ color 216.0360, 17.5140, 1.9780 looks on a black background.

Color Contrast Check

Large Text (above 18pt) WCAG AA ✓ Pass

Any Text WCAG AA ✓ Pass

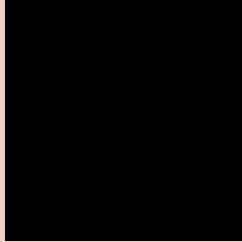
Large Text (above 18pt) WCAG AAA ✓ Pass

Any Text WCAG AAA ✓ Pass

If you want to check with other color combinations, try the [Color Contrast Checker](#).

YIQ 216.0360, 17.5140, 1.9780

Background



This preview shows how black text looks on a background with the YIQ color 216.0360, 17.5140, 1.9780.



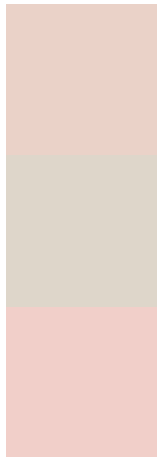
This preview shows how white text looks on a background with the YIQ color 216.0360, 17.5140,

1.9780.

Color Blindness Simulation

Color vision deficiency is a very complex topic, and I could not describe the different causes any better than Wikipedia does, so if you want to learn more, you should check out their [article about color blindness](#).

Dichromacy



Original Color

216.0360, 17.5140, 1.9780

Protanopia

215.0240, 8.6200, -2.0360

Deuteranopia

216.4820, 22.1900, 5.3420



Tritanopia

217.7940, 12.7440, 11.3360

Trichromacy



Original Color

216.0360, 17.5140, 1.9780

Protanomaly

215.5190, 11.6000, -0.9760

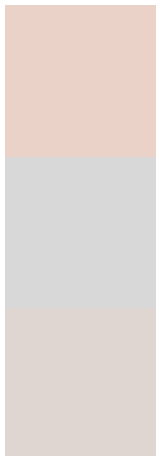
Deuteranomaly

216.1720, 20.1270, 4.1830

Tritanomaly

217.1700, 14.4410, 8.1130

Monochromacy



Original Color

216.0360, 17.5140, 1.9780

Achromatopsia

216.0000, -0.0000, 0.0000

Achromatomaly

216.2350, 6.6480, 0.6640

CSS Examples

Text

The CSS property to change the color of the text to YIQ 216.0360, 17.5140, 1.9780 is called "color". The color property can be set on classes, ids or directly on the HTML element.

This example shows how text in the color `rgb(234, 210, 200)` looks like.

```
.text, #text, p{  
    color:rgb(234, 210, 200)  
}
```

If you want to add a text shadow in that color use the text-shadow property, you can generate a text shadow directly with our [CSS Text Shadow Generator](#).

Here you see how black text with a 4 pixel rgb(234, 210, 200) colored shadow looks like.

```
.shadow{ text-shadow: 4px 4px 2px rgb(234, 210, 200) }
```

Border

The CSS property to change the border of an element to YIQ 216.0360, 17.5140, 1.9780 is called "border". The border property can be set on classes, ids or directly on the HTML element.

This example shows the color as border, it can be applied via the CSS property "border" or "border-color".

```
.border, #border, table{ border:4px solid rgb(234, 210, 200) }
```


If only the border color should be changed use the property border-color.

```
.border{ border-color:rgb(234, 210, 200) }
```

If you want to add a box shadow in that color use:

Here you see how a box with a 4 pixel rgb(234, 210, 200) colored shadow looks like.

```
.boxshadow{ -moz-box-shadow:4px 4px 4px  
4px rgb(234, 210, 200); -webkit-box-  
shadow:4px 4px 4px 4px rgb(234, 210, 200);  
box-shadow:4px 4px 4px 4px rgb(234, 210,  
200) }
```

Background

The CSS property to change the background color of an element to YIQ 216.0360, 17.5140, 1.9780 is called "background". The background property can be set on classes, ids or directly on the HTML element.

```
.background, #background, body{  
background: rgb(234, 210, 200) }
```

If only the background color should be changed can be used:

```
.background{ background-color: rgb(234,  
210, 200) }
```

This example shows the color as background, it is applied via the CSS property "background".

To optimize and compress your CSS code, you can use our [online CSS compressor and optimizer](#) based on csstidy. If you want to create a linear or radial gradient as background or border, check our [CSS Gradient Generator](#).

Hey! You found this booklet interesting? Support Converting Colors with the new Membership Option!

The pro membership hides all ads, plus gives you double the colors in the color bucket, and more awesome pro features!

[Learn more, Memberships starting at \\$2.50/m!](#)

**Follow me
on Twitter!**

@ConvertingColor