

Converting Colors

YIQ(218.4790, 9.0770, 6.2050)

Have a look what the booklet for
YIQ(218.4790, 9.0770, 6.2050)
contains.

YIQ(218.4790, 9.0770, 6.2050)	3
<i>Conversions</i>	4
<i>Details</i>	6
<i>Harmonies</i>	12
<i>Previews</i>	24
<i>Color Blindness Simulation</i>	28
<i>CSS Examples</i>	31

Color

**YIQ(218.4790, 9.0770,
6.2050)**

Conversions

Conversions Part 1

Format	Color
Hex	E7D4DB
RGB	231, 212, 219
RGB Percent	91%, 83%, 86%
CMY	0.0941, 0.1686, 0.1411
CMYK	0.00, 0.08, 0.05, 0.09
HSL	338°, 28%, 87%
HSV	338°, 8%, 91%
XYZ	69.2878, 69.1889, 76.7262
YIQ	218.4790, 9.0770, 6.2050

Conversions

Conversions Part 2

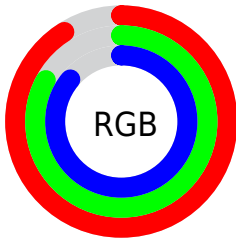
Format	Color
R _{YB}	231, 212, 219
Decimal	15193307
CIE Lab	86.60, 7.77, -1.08
CIE LCh	87, 7.841, 352.067
Yxy	69.1889, 0.3220, 0.3215
Android (android.graphics.Color)	4293383387 (0xFFE7D4DB)
YUV	218.4790, 0.2569, 10.9809
Hunter-Lab	83.1799, 3.1235, 3.5361

Details

The YIQ color $218.4790, 9.0770, 6.2050$ is a light color, and the websafe version is hex `CCCCCC`. A complement of this color would be $224.5210, -9.0770, -6.2050$, and the grayscale version is $218.0000, -0.0000, 0.0000$.

A 20% lighter version of the original color is $255.0000, -0.0000, -0.0000$, and $163.1800, 8.4810, 5.9930$ is the 20% darker color. If you saturate the color by 10%, you get $203.2680, 20.2170, 13.5690$, and if you desaturate by 10%, it is $233.6900, -2.0630, -1.1590$.

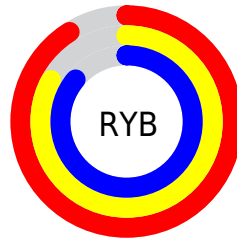
Distribution



Red (91%)

Green (83%)

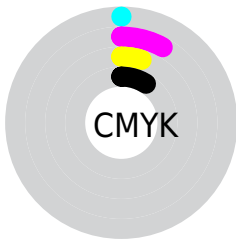
Blue (86%)



Red (91%)

Yellow (83%)

Blue (86%)

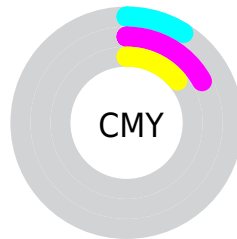


Cyan (0%)

Magenta (8%)

Yellow (5%)

Black (9%)



Cyan (9%)

Magenta (17%)

Yellow (14%)

Brightness & Saturation Gradients

These gradients show how the YIQ color 218.4790, 9.0770, 6.2050 changes by changing the brightness by 10 percent. The first figure shows a shift by +10% for each color and the second figure -10%.

Similar to the brightness gradients but the following saturation gradients show a change of the YIQ color 218.4790, 9.0770, 6.2050 by changing the saturation by 10% instead.

218.4790, 9.0770,
6.2050

218.4790, 9.0770,
6.2050

255.0000, -0.0000,
-0.0000

190.4790, 9.0770,
6.2050

163.1800, 8.4810,
5.9930

137.1800, 8.4810,
5.9930

111.7670, 8.2060,
5.4700

87.4680, 7.6100,
5.2580

64.1690, 7.0140,
5.0460

41.8700, 6.4180,

4.8340

■ 21.4570, 6.1430,
4.3110

■ 0.0000, 0.0000,
0.0000

■ 218.4790, 9.0770,
6.2050

■ 218.4790, 9.0770,
6.2050

■ 203.2680, 20.2170,
13.5690

■ 233.6900, -2.0630,
-1.1590

■ 188.1710, 31.0360,
21.2440

■ 247.0260,
-12.0570, -7.2650

■ 172.9600, 42.1760,
28.6080

■ 247.8240,
-14.3040, -5.0880

■ 157.8630, 52.9950,
36.2830

■ 142.0650, 64.4100,
44.1700

■ 126.9680, 75.2290,
51.8450

■ 111.7570, 86.3690,
59.2090

■ 96.5460, 97.5090,
66.5730

■ 81.4490, 108.3280,
74.2480

Harmonies

Analogous

The Analogous color harmony consists of three colors that are next to each other on the color wheel.



218.0700, 2.9790, 6.5870



218.4790, 9.0770, 6.2050



218.1650, 12.8370, 4.1410

Triad

The Triadic color harmony groups three colors that are evenly spaced from another and form a triangle on the color wheel.



218.4790, 9.0770, 6.2050



215.9910, 4.2190, -4.8770



215.2310, -13.8920, -1.5400

Complementary

The Complementary color scheme is a pair of colors which are on the opposite of each other on the color wheel.



218.4790, 9.0770, 6.2050



224.5210, -9.0770, -6.2050

Split Complementary

Split-complementary colors differ from the complementary color scheme. The scheme consists of three colors, the original color and two neighbors of the complement color.



214.5360, -13.4330, -4.3530



218.4790, 9.0770, 6.2050



214.9300, -2.9790, -6.5870

Square

The Square scheme is like the rectangle color scheme, but the four colors are evenly spaced on the color wheel.



218.4790, 9.0770, 6.2050



217.0950, 9.8580, -2.4460



214.5210, -9.0770, -6.2050



216.1930, -10.7290, 1.7110

Rectangle

The Rectangle color scheme consists of four colors that form a rectangle on the color wheel.



218.4790, 9.0770, 6.2050



217.9970, 13.2500, 2.1620



214.5210, -9.0770, -6.2050



215.2910, -14.1210, -2.8970

Sweetspot

The Sweet Spot groups the original color and five complimentary colors.



218.4790, 9.0770, 6.2050



251.7230, 2.3380, 1.6820



217.7540, 1.0530, 8.4530



126.0110, 1.4670, 0.9470



0.0000, 0.0000, 0.0000



128.0000, -0.0000, -0.0000

Same Dimension

The Same Dimension uses a secret algorithm to generate beautiful new colors.



218.4790, 9.0770, 6.2050



238.5010, 12.0110, 8.0990



218.8550, 10.7740, 2.9820



107.1580, 5.5470, 4.0990



61.0450, 85.4980, 58.4740



17.4150, 24.2970, 16.7210

Inverse Universe

The Inverse Universe completely reimagines the original color for something new.



218.4790, 9.0770, 6.2050



238.5010, 12.0110, 8.0990



224.1450, -10.7740, -2.9820



107.1580, 5.5470, 4.0990



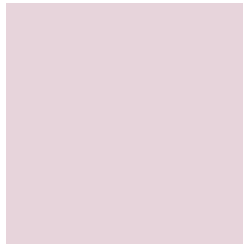
61.0450, 85.4980, 58.4740



17.4150, 24.2970, 16.7210

Previews

White Background



This preview shows how the YIQ color 218.4790, 9.0770, 6.2050 looks on a white background.

Color Contrast Check

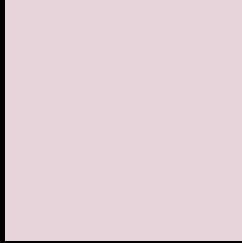
Large Text (above 18pt) WCAG AA × Fail

Any Text WCAG AA × Fail

Large Text (above 18pt) WCAG AAA × Fail

Any Text WCAG AAA × Fail

Black Background



This preview shows how the YIQ color 218.4790, 9.0770, 6.2050 looks on a black background.

Color Contrast Check

Large Text (above 18pt) WCAG AA ✓ Pass

Any Text WCAG AA ✓ Pass

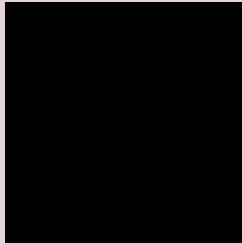
Large Text (above 18pt) WCAG AAA ✓ Pass

Any Text WCAG AAA ✓ Pass

If you want to check with other color combinations, try the [Color Contrast Checker](#).

YIQ 218.4790, 9.0770, 6.2050

Background



This preview shows how black text looks on a background with the YIQ color 218.4790, 9.0770, 6.2050.



This preview shows how white text looks on a background with the YIQ color 218.4790, 9.0770,

Color Blindness Simulation

Color vision deficiency is a very complex topic, and I could not describe the different causes any better than Wikipedia does, so if you want to learn more, you should check out their [article about color blindness](#).

Dichromacy



Original Color

218.4790, 9.0770, 6.2050

Protanopia

217.4670, 0.1830, 2.1910

Deuteranopia

218.8000, 12.6070, 8.3110



Tritanopia

219.1030, 7.3800, 9.4280

Trichromacy



Original Color

218.4790, 9.0770, 6.2050

Protanomaly

217.9620, 3.1630, 3.2510

Deuteranomaly

218.7890, 11.1400, 7.3640

Tritanomaly

218.7610, 8.3430, 8.4950

Monochromacy



Original Color

218.4790, 9.0770, 6.2050

Achromatopsia

218.0000, -0.0000, 0.0000

Achromatomaly

218.3210, 3.5300, 2.1060

CSS Examples

Text

The CSS property to change the color of the text to YIQ 218.4790, 9.0770, 6.2050 is called "color". The color property can be set on classes, ids or directly on the HTML element.

This example shows how text in the color `rgb(231, 212, 219)` looks like.

```
.text, #text, p{  
    color:rgb(231, 212, 219)  
}
```

If you want to add a text shadow in that color use the text-shadow property, you can generate a text shadow directly with our [CSS Text Shadow Generator](#).

Here you see how black text with a 4 pixel rgb(231, 212, 219) colored shadow looks like.

```
.shadow{ text-shadow: 4px 4px 2px rgb(231, 212, 219) }
```

Border

The CSS property to change the border of an element to YIQ 218.4790, 9.0770, 6.2050 is called "border". The border property can be set on classes, ids or directly on the HTML element.

This example shows the color as border, it can be applied via the CSS property "border" or "border-color".

```
.border, #border, table{ border:4px solid rgb(231, 212, 219) }
```


If only the border color should be changed use the property `border-color`.

```
.border{ border-color:rgb(231, 212, 219) }
```

If you want to add a box shadow in that color use:

Here you see how a box with a 4 pixel `rgb(231, 212, 219)` colored shadow looks like.

```
.boxshadow{ -moz-box-shadow:4px 4px 4px 4px rgb(231, 212, 219); -webkit-box-shadow:4px 4px 4px 4px rgb(231, 212, 219); box-shadow:4px 4px 4px 4px rgb(231, 212, 219) }
```

Background

The CSS property to change the background color of an element to YIQ 218.4790, 9.0770, 6.2050 is called "background". The background property can be set on classes, ids or directly on the HTML element.

```
.background, #background, body{  
background: rgb(231, 212, 219) }
```

If only the background color should be changed can be used:

```
.background{ background-color: rgb(231,  
212, 219) }
```

This example shows the color as background, it is applied via the CSS property "background".

To optimize and compress your CSS code, you can use our [online CSS compressor and optimizer](#) based on csstidy. If you want to create a linear or radial gradient as background or border, check our [CSS Gradient Generator](#).

Hey! You found this booklet interesting? Support Converting Colors with the new Membership Option!

The pro membership hides all ads, plus gives you double the colors in the color bucket, and more awesome pro features!

[Learn more, Memberships starting at \\$2.50/m!](#)

**Follow me
on Twitter!**

@ConvertingColor