

Converting Colors

YIQ(218.8060, 12.4700, 5.2860)

Have a look what the booklet for
YIQ(218.8060, 12.4700, 5.2860)
contains.

YIQ(218.8060, 12.4700, 5.2860)	3
<i>Conversions</i>	4
<i>Details</i>	6
<i>Harmonies</i>	12
<i>Previews</i>	24
<i>Color Blindness Simulation</i>	28
<i>CSS Examples</i>	31

Color

**YIQ(218.8060, 12.4700,
5.2860)**

Conversions

Conversions Part 1

Format	Color
Hex	EAD4D6
RGB	234, 212, 214
RGB Percent	92%, 83%, 84%
CMY	0.0823, 0.1686, 0.1607
CMYK	0.00, 0.09, 0.09, 0.08
HSL	354°, 34%, 87%
HSV	355°, 9%, 92%
XYZ	69.6165, 69.4327, 73.3592
YIQ	218.8060, 12.4700, 5.2860

Conversions

Conversions Part 2

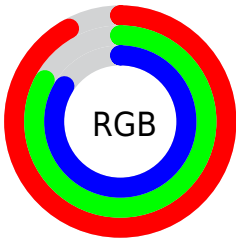
Format	Color
RYB	234, 212, 214
Decimal	15389910
CIELab	86.72, 7.96, 1.77
CIELCh	87, 8.152, 12.524
Yxy	69.4327, 0.3277, 0.3269
Android (android.graphics.Color)	4293579990 (0xFFEAD4D6)
YUV	218.8060, -2.3694, 13.3251
Hunter-Lab	83.3263, 3.3101, 6.1304

Details

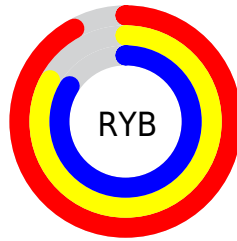
The YIQ color **218.8060, 12.4700, 5.2860** is a light color, and the websafe version is hex **CCCCCC**. A complement of this color would be **227.1940, -12.4700, -5.2860**, and the grayscale version is **219.0000, 0.0000, -0.0000**.

A 20% lighter version of the original color is **255.0000, -0.0000, -0.0000**, and **163.5070, 11.8740, 5.0740** is the 20% darker color. If you saturate the color by 10%, you get **202.9110, 25.5360, 10.7840**, and if you desaturate by 10%, it is **234.7010, -0.5960, -0.2120**.

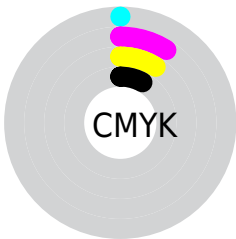
Distribution



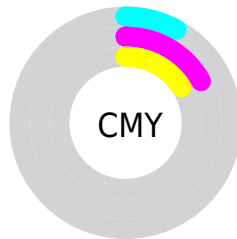
- Red (92%)
- Green (83%)
- Blue (84%)



- Red (92%)
- Yellow (83%)
- Blue (84%)



- Cyan (0%)
- Magenta (9%)
- Yellow (9%)
- Black (8%)



- Cyan (8%)
- Magenta (17%)
- Yellow (16%)

Brightness & Saturation Gradients

These gradients show how the YIQ color 218.8060, 12.4700, 5.2860 changes by changing the brightness by 10 percent. The first figure shows a shift by +10% for each color and the second figure -10%.

Similar to the brightness gradients but the following saturation gradients show a change of the YIQ color 218.8060, 12.4700, 5.2860 by changing the saturation by 10% instead.

218.8060, 12.4700,
5.2860

218.8060, 12.4700,
5.2860

255.0000, -0.0000,
-0.0000

190.8060, 12.4700,
5.2860

163.5070, 11.8740,
5.0740

137.2080, 11.2780,
4.8620

111.9090, 10.6820,
4.6500

87.6100, 10.0860,
4.4380

64.3110, 9.4900,
4.2260

42.0120, 8.8940,

4.0140

■ 21.5990, 8.6190,
3.4910

■ 0.0000, 0.0000,
0.0000

■ 218.8060, 12.4700,
5.2860

■ 218.8060, 12.4700,
5.2860

■ 202.9110, 25.5360,
10.7840

■ 234.7010, -0.5960,
-0.2120

■ 186.3150, 39.1980,
16.4940

■ 248.7210,
-12.5160, -4.4520

■ 170.4200, 52.2640,
21.9920

■ 153.9380, 65.6050,
28.0130

■ 138.0430, 78.6710,
33.5110

■ 122.0340, 92.0580,
38.6980

■ 105.5520,
105.3990, 44.7190

■ 89.6570, 118.4650,
50.2170

■ 73.1750, 131.8060,
56.2380

Harmonies

Analogous

The Analogous color harmony consists of three colors that are next to each other on the color wheel.



218.5220, 7.5180, 6.9260



218.8060, 12.4700, 5.2860



218.2960, 13.8460, 2.3740

Triad

The Triadic color harmony groups three colors that are evenly spaced from another and form a triangle on the color wheel.



218.8060, 12.4700, 5.2860



215.7130, -0.8700, -6.2620



216.2960, -12.5170, 1.0750

Complementary

The Complementary color scheme is a pair of colors which are on the opposite of each other on the color wheel.



218.8060, 12.4700, 5.2860



227.1940, -12.4700, -5.2860

Split Complementary

Split-complementary colors differ from the complementary color scheme. The scheme consists of three colors, the original color and two neighbors of the complement color.



215.1060, -15.0380, -2.7980



218.8060, 12.4700, 5.2860



214.5920, -7.8390, -6.6150

Square

The Square scheme is like the rectangle color scheme, but the four colors are evenly spaced on the color wheel.



218.8060, 12.4700, 5.2860



216.7740, 6.3280, -4.5520



214.8950, -13.0660, -5.4980



217.5140, -7.1990, 3.8170

Rectangle

The Rectangle color scheme consists of four colors that form a rectangle on the color wheel.



218.8060, 12.4700, 5.2860



217.6440, 12.7460, 0.2820



214.8950, -13.0660, -5.4980



215.8720, -14.2590, -0.3950

Sweetspot

The Sweet Spot groups the original color and five complimentary colors.



218.8060, 12.4700, 5.2860



249.5060, 4.4470, 2.0070



220.4880, 4.8580, 11.0820



123.9080, 3.2550, 1.5830



0.0000, 0.0000, 0.0000



128.0000, -0.0000, -0.0000

Same Dimension

The Same Dimension uses a secret algorithm to generate beautiful new colors.



218.8060, 12.4700, 5.2860



235.7140, 15.7250, 6.8690



223.8610, 10.6370, -0.0430



109.4030, 6.2350, 2.6430



56.0570, 102.4190, 43.6590



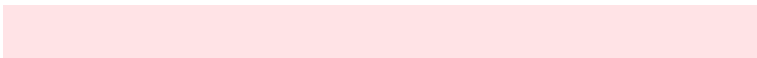
16.7160, 30.5790, 13.0030

Inverse Universe

The Inverse Universe completely reimagines the original color for something new.



218.8060, 12.4700, 5.2860



235.7140, 15.7250, 6.8690



222.1390, -10.6370, 0.0430



109.4030, 6.2350, 2.6430



56.0570, 102.4190, 43.6590



16.7160, 30.5790, 13.0030

Previews

White Background



This preview shows how the YIQ color 218.8060, 12.4700, 5.2860 looks on a white background.

Color Contrast Check

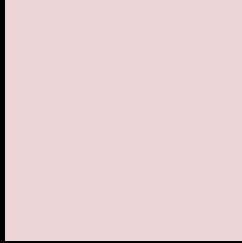
Large Text (above 18pt) WCAG AA × Fail

Any Text WCAG AA × Fail

Large Text (above 18pt) WCAG AAA × Fail

Any Text WCAG AAA × Fail

Black Background



This preview shows how the YIQ color 218.8060, 12.4700, 5.2860 looks on a black background.

Color Contrast Check

Large Text (above 18pt) WCAG AA ✓ Pass

Any Text WCAG AA ✓ Pass

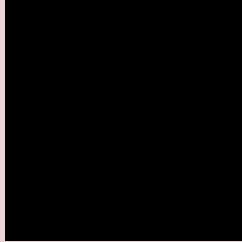
Large Text (above 18pt) WCAG AAA ✓ Pass

Any Text WCAG AAA ✓ Pass

If you want to check with other color combinations, try the [Color Contrast Checker](#).

YIQ 218.8060, 12.4700, 5.2860

Background



This preview shows how black text looks on a background with the YIQ color 218.8060, 12.4700, 5.2860.



This preview shows how white text looks on a background with the YIQ color 218.8060, 12.4700,

5.2860.

Color Blindness Simulation

Color vision deficiency is a very complex topic, and I could not describe the different causes any better than Wikipedia does, so if you want to learn more, you should check out their [article about color blindness](#).

Dichromacy



Original Color

218.8060, 12.4700, 5.2860

Protanopia

217.4950, 2.9800, 1.0600

Deuteranopia

219.1270, 16.0000, 7.3920



Tritanopia

219.7120, 10.0390, 10.7990

Trichromacy



Original Color

218.8060, 12.4700, 5.2860

Protanomaly

218.2890, 6.5560, 2.3320

Deuteranomaly

219.1160, 14.5330, 6.4450

Tritanomaly

219.4300, 10.7730, 8.5090

Monochromacy



Original Color

218.8060, 12.4700, 5.2860

Achromatopsia

219.0000, 0.0000, -0.0000

Achromatomaly

218.5060, 4.4470, 2.0070

CSS Examples

Text

The CSS property to change the color of the text to YIQ 218.8060, 12.4700, 5.2860 is called "color". The color property can be set on classes, ids or directly on the HTML element.

This example shows how text in the color `rgb(234, 212, 214)` looks like.

```
.text, #text, p{  
    color:rgb(234, 212, 214)  
}
```

If you want to add a text shadow in that color use the text-shadow property, you can generate a text shadow directly with our [CSS Text Shadow Generator](#).

Here you see how black text with a 4 pixel rgb(234, 212, 214) colored shadow looks like.

```
.shadow{ text-shadow: 4px 4px 2px rgb(234, 212, 214) }
```

Border

The CSS property to change the border of an element to YIQ 218.8060, 12.4700, 5.2860 is called "border". The border property can be set on classes, ids or directly on the HTML element.

This example shows the color as border, it can be applied via the CSS property "border" or "border-color".

```
.border, #border, table{ border:4px solid rgb(234, 212, 214) }
```


If only the border color should be changed use the property `border-color`.

```
.border{ border-color:rgb(234, 212, 214) }
```

If you want to add a box shadow in that color use:

Here you see how a box with a 4 pixel `rgb(234, 212, 214)` colored shadow looks like.

```
.boxshadow{ -moz-box-shadow:4px 4px 4px  
4px rgb(234, 212, 214); -webkit-box-  
shadow:4px 4px 4px 4px rgb(234, 212, 214);  
box-shadow:4px 4px 4px 4px rgb(234, 212,  
214) }
```

Background

The CSS property to change the background color of an element to YIQ 218.8060, 12.4700, 5.2860 is called "background". The background property can be set on classes, ids or directly on the HTML element.

```
.background, #background, body{  
background: rgb(234, 212, 214) }
```

If only the background color should be changed can be used:

```
.background{ background-color: rgb(234,  
212, 214) }
```

This example shows the color as background, it is applied via the CSS property "background".

To optimize and compress your CSS code, you can use our [online CSS compressor and optimizer](#) based on csstidy. If you want to create a linear or radial gradient as background or border, check our [CSS Gradient Generator](#).

Hey! You found this booklet interesting? Support Converting Colors with the new Membership Option!

The pro membership hides all ads, plus gives you double the colors in the color bucket, and more awesome pro features!

[Learn more, Memberships starting at \\$2.50/m!](#)

**Follow me
on Twitter!**

@ConvertingColor