

Converting Colors

YIQ(220.3670, 16.2250, 30.8570)

Have a look what the booklet for
YIQ(220.3670, 16.2250, 30.8570)
contains.

YIQ(220.3670, 16.2250, 30.8570)	3
<i>Conversions</i>	4
<i>Details</i>	6
<i>Harmonies</i>	12
<i>Previews</i>	24
<i>Color Blindness Simulation</i>	28
<i>CSS Examples</i>	31

Color

**YIQ(220.3670, 16.2250,
30.8570)**

Conversions

Conversions Part 1

Format	Color
Hex	FFC4FF
RGB	255, 196, 255
RGB Percent	100%, 77%, 100%
CMY	0.0000, 0.2314, 0.0000
CMYK	0.00, 0.23, 0.00, 0.00
HSL	300°, 100%, 88%
HSV	300°, 23%, 100%
XYZ	79.0244, 67.9487, 103.5581
YIQ	220.3670, 16.2250, 30.8570

Conversions

Conversions Part 2

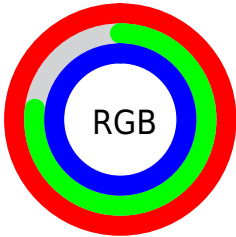
Format	Color
R_{YB}	255, 196, 255
Decimal	16762111
CIE _{Lab}	85.98, 30.59, -20.86
CIE _{LCh}	86, 37.020, 325.711
Yxy	67.9487, 0.3154, 0.2712
Android (android.graphics.Color)	4294952191 (0xFFFFC4FF)
YUV	220.3670, 17.0741, 30.3731
Hunter-Lab	82.4310, 26.8688, -16.7843

Details

The YIQ color $220.3670, 16.2250, 30.8570$ is a light color, and the websafe version is hex FFCCFF . A complement of this color would be $230.6330, -16.2250, -30.8570$, and the grayscale version is $220.0000, 0.0000, 0.0000$.

A 20% lighter version of the original color is $253.8260, 0.5500, 1.0460$, and $165.1280, 15.4000, 29.2880$ is the 20% darker color. If you saturate the color by 10%, you get $205.1050, 23.3750, 44.4550$, and if you desaturate by 10%, it is $235.0420, 9.3500, 17.7820$.

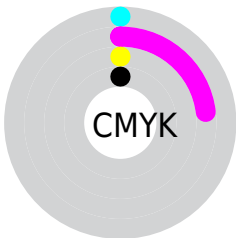
Distribution



- Red (100%)
- Green (77%)
- Blue (100%)



- Red (100%)
- Yellow (77%)
- Blue (100%)



- Cyan (0%)
- Magenta (23%)
- Yellow (0%)
- Black (0%)



- Cyan (0%)
- Magenta (23%)
- Yellow (0%)

Brightness & Saturation Gradients

These gradients show how the YIQ color 220.3670, 16.2250, 30.8570 changes by changing the brightness by 10 percent. The first figure shows a shift by +10% for each color and the second figure -10%.

Similar to the brightness gradients but the following saturation gradients show a change of the YIQ color 220.3670, 16.2250, 30.8570 by changing the saturation by 10% instead.

220.3670, 16.2250,
30.8570

220.3670, 16.2250,
30.8570

255.0000, -0.0000,
-0.0000

191.9540, 15.9500,
30.3340

253.8260, 0.5500,
1.0460

165.1280, 15.4000,
29.2880

138.4160, 14.5290,
28.5530

112.5900, 13.9790,
27.5070

87.1770, 13.7040,
26.9840

63.1660, 12.2370,
26.0370

39.1660, 12.2370,

26.0370

■ 18.2150, 10.5410,
23.7330

■ 8.0470, 1.7860,
11.6900

■ 220.3670, 16.2250,
30.8570

■ 220.3670, 16.2250,
30.8570

■ 205.1050, 23.3750,
44.4550

■ 235.0420, 9.3500,
17.7820

■ 190.4300, 30.2500,
57.5300

■ 250.3040, 2.2000,
4.1840

■ 175.1680, 37.4000,
71.1280

255.0000, -0.0000,
-0.0000

■ 160.4930, 44.2750,
84.2030

■ 145.2310, 51.4250,
97.8010

■ 130.5560, 58.3000,
110.8760

■ 115.2940, 65.4500,
124.4740

■ 105.3150, 70.1250,
133.3650

Harmonies

Analogous

The Analogous color harmony consists of three colors that are next to each other on the color wheel.



214.8530, -12.1070, 15.6770



220.3670, 16.2250, 30.8570



212.3820, 29.0640, 23.9440

Triad

The Triadic color harmony groups three colors that are evenly spaced from another and form a triangle on the color wheel.



220.3670, 16.2250, 30.8570



213.3430, 40.8540, -13.5300



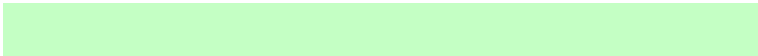
195.0740, -83.0740, -25.2980

Complementary

The Complementary color scheme is a pair of colors which are on the opposite of each other on the color wheel.



220.3670, 16.2250, 30.8570



230.6330, -16.2250, -30.8570

Split Complementary

Split-complementary colors differ from the complementary color scheme. The scheme consists of three colors, the original color and two neighbors of the complement color.



199.1570, -55.7470, -30.4590



220.3670, 16.2250, 30.8570



209.7200, 14.4470, -25.0490

Square

The Square scheme is like the rectangle color scheme, but the four colors are evenly spaced on the color wheel.



220.3670, 16.2250, 30.8570



211.0700, 46.5370, -0.8790



204.7790, -19.5720, -30.7720



197.5790, -76.8860, -16.2940

Rectangle

The Rectangle color scheme consists of four colors that form a rectangle on the color wheel.



220.3670, 16.2250, 30.8570



209.7600, 36.4470, 16.7910



204.7790, -19.5720, -30.7720



195.6140, -75.9670, -27.4470

Sweetspot

The Sweet Spot groups the original color and five complimentary colors.



220.3670, 16.2250, 30.8570



244.4340, 4.9500, 9.4140



202.7260, -18.9390, 18.3490



121.5430, 3.0250, 5.7530



0.0000, 0.0000, 0.0000



128.0000, -0.0000, -0.0000

Same Dimension

The Same Dimension uses a secret algorithm to generate beautiful new colors.



220.3670, 16.2250, 30.8570



213.3230, 19.5250, 37.1330



216.9470, 25.8550, 21.5270



120.3690, 3.5750, 6.7990



78.8830, 52.5250, 99.8930



26.4320, 17.6000, 33.4720

Inverse Universe

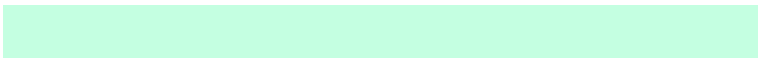
The Inverse Universe completely reimagines the original color for something new.



220.3670, 16.2250, 30.8570



213.3230, 19.5250, 37.1330



233.9390, -25.5340, -21.8380



120.3690, 3.5750, 6.7990



78.8830, 52.5250, 99.8930



26.4320, 17.6000, 33.4720

Previews

White Background



This preview shows how the YIQ color 220.3670, 16.2250, 30.8570 looks on a white background.

Color Contrast Check

Large Text (above 18pt) WCAG AA × Fail

Any Text WCAG AA × Fail

Large Text (above 18pt) WCAG AAA × Fail

Any Text WCAG AAA × Fail

Black Background



This preview shows how the YIQ color 220.3670, 16.2250, 30.8570 looks on a black background.

Color Contrast Check

Large Text (above 18pt) WCAG AA ✓ Pass

Any Text WCAG AA ✓ Pass

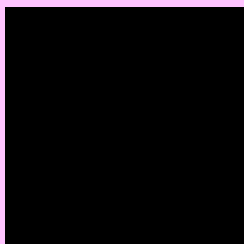
Large Text (above 18pt) WCAG AAA ✓ Pass

Any Text WCAG AAA ✓ Pass

If you want to check with other color combinations, try the [Color Contrast Checker](#).

YIQ 220.3670, 16.2250, 30.8570

Background



This preview shows how black text looks on a background with the YIQ color 220.3670, 16.2250, 30.8570.



This preview shows how white text looks on a background with the YIQ color 220.3670, 16.2250,

30.8570.

Color Blindness Simulation

Color vision deficiency is a very complex topic, and I could not describe the different causes any better than Wikipedia does, so if you want to learn more, you should check out their [article about color blindness](#).

Dichromacy



Original Color

220.3670, 16.2250, 30.8570

Protanopia

216.2820, -17.9290, 11.0550

Deuteranopia

217.1800, -8.7140, 14.7580



Tritanopia

218.7630, 23.1970, 14.6290

Trichromacy



Original Color

220.3670, 16.2250, 30.8570



Protanomaly

217.5550, -5.2760, 18.5320



Deuteranomaly

218.2460, 0.0880, 20.4400



Tritanomaly

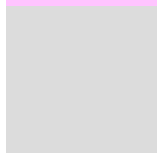
219.0820, 21.0410, 20.6650

Monochromacy



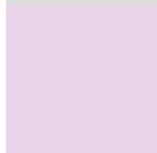
Original Color

220.3670, 16.2250, 30.8570



Achromatopsia

220.0000, 0.0000, 0.0000



Achromatomaly

220.0860, 6.0500, 11.5060

CSS Examples

Text

The CSS property to change the color of the text to YIQ 220.3670, 16.2250, 30.8570 is called "color". The color property can be set on classes, ids or directly on the HTML element.

This example shows how text in the color `rgb(255, 196, 255)` looks like.

```
.text, #text, p{  
    color:rgb(255, 196, 255)  
}
```

If you want to add a text shadow in that color use the text-shadow property, you can generate a text shadow directly with our [CSS Text Shadow Generator](#).

Here you see how black text with a 4 pixel rgb(255, 196, 255) colored shadow looks like.

```
.shadow{ text-shadow: 4px 4px 2px rgb(255, 196, 255) }
```

Border

The CSS property to change the border of an element to YIQ 220.3670, 16.2250, 30.8570 is called "border". The border property can be set on classes, ids or directly on the HTML element.

This example shows the color as border, it can be applied via the CSS property "border" or "border-color".

```
.border, #border, table{ border:4px solid rgb(255, 196, 255) }
```


If only the border color should be changed use the property `border-color`.

```
.border{ border-color:rgb(255, 196, 255) }
```

If you want to add a box shadow in that color use:

Here you see how a box with a 4 pixel `rgb(255, 196, 255)` colored shadow looks like.

```
.boxshadow{ -moz-box-shadow:4px 4px 4px  
4px rgb(255, 196, 255); -webkit-box-  
shadow:4px 4px 4px 4px rgb(255, 196, 255);  
box-shadow:4px 4px 4px 4px rgb(255, 196,  
255) }
```

Background

The CSS property to change the background color of an element to YIQ 220.3670, 16.2250, 30.8570 is called "background". The background property can be set on classes, ids or directly on the HTML element.

```
.background, #background, body{  
background: rgb(255, 196, 255) }
```

If only the background color should be changed can be used:

```
.background{ background-color: rgb(255,  
196, 255) }
```

This example shows the color as background, it is applied via the CSS property "background".

To optimize and compress your CSS code, you can use our [online CSS compressor and optimizer](#) based on csstidy. If you want to create a linear or radial gradient as background or border, check our [CSS Gradient Generator](#).

Hey! You found this booklet interesting? Support Converting Colors with the new Membership Option!

The pro membership hides all ads, plus gives you double the colors in the color bucket, and more awesome pro features!

[Learn more, Memberships starting at \\$2.50/m!](#)

**Follow me
on Twitter!**

@ConvertingColor