

Converting Colors

YIQ(221.5240, 13.2040, 2.9960)

Have a look what the booklet for
YIQ(221.5240, 13.2040, 2.9960)
contains.

YIQ(221.5240, 13.2040, 2.9960)	3
<i>Conversions</i>	4
<i>Details</i>	6
<i>Harmonies</i>	12
<i>Previews</i>	24
<i>Color Blindness Simulation</i>	28
<i>CSS Examples</i>	31

Color

**YIQ(221.5240, 13.2040,
2.9960)**

Conversions

Conversions Part 1

Format	Color
Hex	ECD8D4
RGB	236, 216, 212
RGB Percent	93%, 85%, 83%
CMY	0.0745, 0.1530, 0.1686
CMYK	0.00, 0.08, 0.10, 0.07
HSL	10°, 39%, 88%
HSV	10°, 10%, 93%
XYZ	71.0351, 71.6964, 72.3916
YIQ	221.5240, 13.2040, 2.9960

Conversions

Conversions Part 2

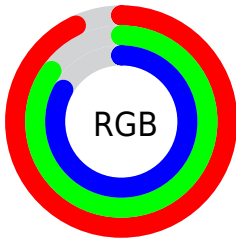
Format	Color
R _Y B	236, 217, 212
Decimal	15522004
CIE Lab	87.82, 6.24, 4.45
CIE LCh	88, 7.661, 35.478
Yxy	71.6964, 0.3302, 0.3333
Android (android.graphics.Color)	4293712084 (0xFFECD8D4)
YUV	221.5240, -4.6953, 12.6955
Hunter-Lab	84.6737, 1.5693, 8.5818

Details

The YIQ color $221.5240, 13.2040, 2.9960$ is a light color, and the websafe version is hex $CCCCCC$. A complement of this color would be $226.4760, -13.2040, -2.9960$, and the grayscale version is $222.0000, -0.0000, 0.0000$.

A 20% lighter version of the original color is $255.0000, -0.0000, -0.0000$, and $166.2250, 12.6080, 2.7840$ is the 20% darker color. If you saturate the color by 10%, you get $207.0480, 26.4080, 5.9920$, and if you desaturate by 10%, it is $236.0000, 0.0000, -0.0000$.

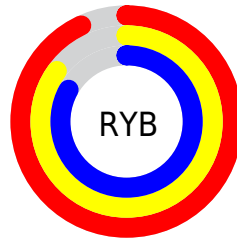
Distribution



Red (93%)

Green (85%)

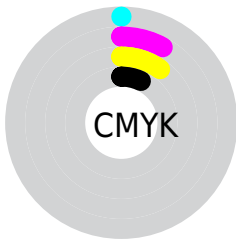
Blue (83%)



Red (93%)

Yellow (85%)

Blue (83%)

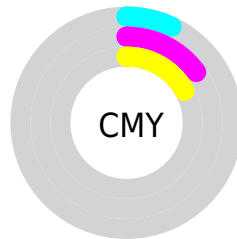


Cyan (0%)

Magenta (8%)

Yellow (10%)

Black (7%)



Cyan (7%)

Magenta (15%)

Yellow (17%)

Brightness & Saturation Gradients

These gradients show how the YIQ color 221.5240, 13.2040, 2.9960 changes by changing the brightness by 10 percent. The first figure shows a shift by +10% for each color and the second figure -10%.

Similar to the brightness gradients but the following saturation gradients show a change of the YIQ color 221.5240, 13.2040, 2.9960 by changing the saturation by 10% instead.

■ 221.5240, 13.2040,
2.9960

■ 221.5240, 13.2040,
2.9960

255.0000, -0.0000,
-0.0000

■ 193.5240, 13.2040,
2.9960

■ 166.2250, 12.6080,
2.7840

■ 139.9260, 12.0120,
2.5720

■ 114.6270, 11.4160,
2.3600

■ 89.7410, 11.0950,
2.6710

■ 66.4420, 10.4990,
2.4590

■ 44.1430, 9.9030,

2.2470

■ 23.5450, 8.7110,
1.8230

■ 0.0000, 0.0000,
0.0000

■ 221.5240, 13.2040,
2.9960

■ 221.5240, 13.2040,
2.9960

■ 207.0480, 26.4080,
5.9920

■ 236.0000, 0.0000,
-0.0000

■ 193.2730, 39.0160,
8.7760

■ 249.3190,
-11.3240, -4.0280

■ 178.7970, 52.2200,
11.7720

■ 164.4350, 65.1030,
15.0790

■ 150.5460, 78.0320,
17.5520

■ 136.0700, 91.2360,
20.5480

■ 121.7080,
104.1190, 23.8550

■ 107.8190,
117.0480, 26.3280

■ 93.4570, 129.9310,
29.6350

Harmonies

Analogous

The Analogous color harmony consists of three colors that are next to each other on the color wheel.



221.7350, 11.2320, 5.6960



221.5240, 13.2040, 2.9960



220.9320, 11.8750, -0.4530

Triad

The Triadic color harmony groups three colors that are evenly spaced from another and form a triangle on the color wheel.



221.5240, 13.2040, 2.9960



218.3750, -5.7300, -6.2900



219.9160, -8.3910, 3.3930

Complementary

The Complementary color scheme is a pair of colors which are on the opposite of each other on the color wheel.



221.5240, 13.2040, 2.9960



226.4760, -13.2040, -2.9960

Split Complementary

Split-complementary colors differ from the complementary color scheme. The scheme consists of three colors, the original color and two neighbors of the complement color.



219.3560, -12.7460, -0.2820



221.5240, 13.2040, 2.9960



218.2650, -11.2320, -5.6960

Square

The Square scheme is like the rectangle color scheme, but the four colors are evenly spaced on the color wheel.



221.5240, 13.2040, 2.9960



218.9090, 1.5140, -5.4140



218.1770, -13.8000, -3.2080



221.0910, -1.5140, 5.4140

Rectangle

The Rectangle color scheme consists of four colors that form a rectangle on the color wheel.



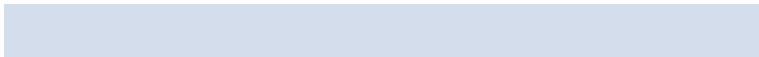
221.5240, 13.2040, 2.9960



220.2090, 9.5370, -2.1350



218.1770, -13.8000, -3.2080



219.9050, -9.8580, 2.4460

Sweetspot

The Sweet Spot groups the original color and five complimentary colors.



221.5240, 13.2040, 2.9960



250.5660, 4.2180, 0.6500



221.4560, 7.8840, 11.3080



124.3810, 3.3010, 0.7490



0.0000, 0.0000, 0.0000



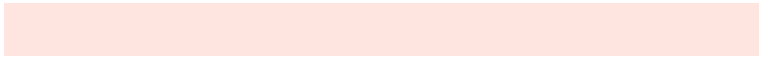
128.0000, -0.0000, -0.0000

Same Dimension

The Same Dimension uses a secret algorithm to generate beautiful new colors.



221.5240, 13.2040, 2.9960



236.2040, 17.1010, 3.9570



228.5680, 9.9040, -3.2800



110.4630, 6.0060, 1.2860



71.7290, 99.6260, 22.6820



21.4290, 29.7090, 6.7410

Inverse Universe

The Inverse Universe completely reimagines the original color for something new.



226.4760, -13.2040, -2.9960



242.7960, -17.1010, -3.9570



219.4320, -9.9040, 3.2800



112.5370, -6.0060, -1.2860



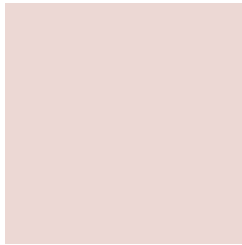
109.2710, -99.6260, -22.6820



32.5710, -29.7090, -6.7410

Previews

White Background



This preview shows how the YIQ color 221.5240, 13.2040, 2.9960 looks on a white background.

Color Contrast Check

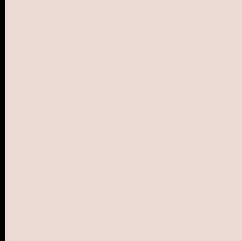
Large Text (above 18pt) WCAG AA × Fail

Any Text WCAG AA × Fail

Large Text (above 18pt) WCAG AAA × Fail

Any Text WCAG AAA × Fail

Black Background



This preview shows how the YIQ color 221.5240, 13.2040, 2.9960 looks on a black background.

Color Contrast Check

Large Text (above 18pt) WCAG AA ✓ Pass

Any Text WCAG AA ✓ Pass

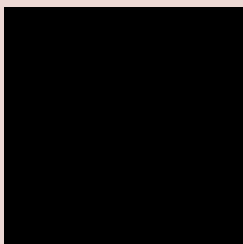
Large Text (above 18pt) WCAG AAA ✓ Pass

Any Text WCAG AAA ✓ Pass

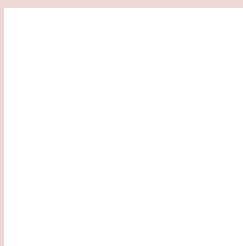
If you want to check with other color combinations, try the [Color Contrast Checker](#).

YIQ 221.5240, 13.2040, 2.9960

Background



This preview shows how black text looks on a background with the YIQ color 221.5240, 13.2040, 2.9960.



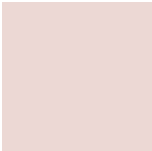
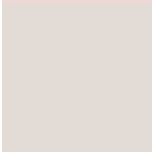

This preview shows how white text looks on a background with the YIQ color 221.5240, 13.2040,

2.9960.

Color Blindness Simulation

Color vision deficiency is a very complex topic, and I could not describe the different causes any better than Wikipedia does, so if you want to learn more, you should check out their [article about color blindness](#).

Dichromacy

	Original Color 221.5240, 13.2040, 2.9960
	Protanopia 220.5230, 5.7770, -0.0710
	Deuteranopia 222.2690, 18.4760, 6.5720



Tritanopia

222.4130, 9.4430, 10.5870

Trichromacy



Original Color

221.5240, 13.2040, 2.9960

Protanomaly

221.0180, 8.7570, 0.9890

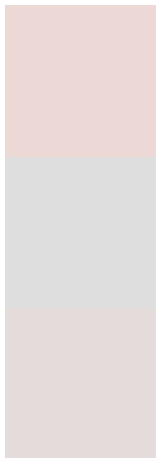
Deuteranomaly

221.9590, 16.4130, 5.4130

Tritanomaly

221.9030, 10.8190, 7.6750

Monochromacy



Original Color

221.5240, 13.2040, 2.9960

Achromatopsia

222.0000, -0.0000, 0.0000

Achromatomaly

221.8650, 4.8140, 0.8620

CSS Examples

Text

The CSS property to change the color of the text to YIQ 221.5240, 13.2040, 2.9960 is called "color". The color property can be set on classes, ids or directly on the HTML element.

This example shows how text in the color `rgb(236, 216, 212)` looks like.

```
.text, #text, p{  
    color:rgb(236, 216, 212)  
}
```

If you want to add a text shadow in that color use the text-shadow property, you can generate a text shadow directly with our [CSS Text Shadow Generator](#).

Here you see how black text with a 4 pixel rgb(236, 216, 212) colored shadow looks like.

```
.shadow{ text-shadow: 4px 4px 2px rgb(236, 216, 212) }
```

Border

The CSS property to change the border of an element to YIQ 221.5240, 13.2040, 2.9960 is called "border". The border property can be set on classes, ids or directly on the HTML element.

This example shows the color as border, it can be applied via the CSS property "border" or "border-color".

```
.border, #border, table{ border:4px solid rgb(236, 216, 212) }
```


If only the border color should be changed use the property `border-color`.

```
.border{ border-color:rgb(236, 216, 212) }
```

If you want to add a box shadow in that color use:

Here you see how a box with a 4 pixel `rgb(236, 216, 212)` colored shadow looks like.

```
.boxshadow{ -moz-box-shadow:4px 4px 4px  
4px rgb(236, 216, 212); -webkit-box-  
shadow:4px 4px 4px 4px rgb(236, 216, 212);  
box-shadow:4px 4px 4px 4px rgb(236, 216,  
212) }
```

Background

The CSS property to change the background color of an element to YIQ 221.5240, 13.2040, 2.9960 is called "background". The background property can be set on classes, ids or directly on the HTML element.

```
.background, #background, body{  
background: rgb(236, 216, 212) }
```

If only the background color should be changed can be used:

```
.background{ background-color: rgb(236,  
216, 212) }
```

This example shows the color as background, it is applied via the CSS property "background".

To optimize and compress your CSS code, you can use our [online CSS compressor and optimizer](#) based on csstidy. If you want to create a linear or radial gradient as background or border, check our [CSS Gradient Generator](#).

Hey! You found this booklet interesting? Support Converting Colors with the new Membership Option!

The pro membership hides all ads, plus gives you double the colors in the color bucket, and more awesome pro features!

[Learn more, Memberships starting at \\$2.50/m!](#)

**Follow me
on Twitter!**

@ConvertingColor