

Converting Colors

YIQ(223.1370, 10.0400, 5.2720)

Have a look what the booklet for
YIQ(223.1370, 10.0400, 5.2720)
contains.

YIQ(223.1370, 10.0400, 5.2720)	3
<i>Conversions</i>	4
<i>Details</i>	6
<i>Harmonies</i>	12
<i>Previews</i>	24
<i>Color Blindness Simulation</i>	28
<i>CSS Examples</i>	31

Color

**YIQ(223.1370, 10.0400,
5.2720)**

Conversions

Conversions Part 1

Format	Color
Hex	ECD9DD
RGB	236, 217, 221
RGB Percent	93%, 85%, 87%
CMY	0.0745, 0.1490, 0.1333
CMYK	0.00, 0.08, 0.06, 0.07
HSL	347°, 33%, 89%
HSV	347°, 8%, 93%
XYZ	72.4593, 72.6775, 78.6223
YIQ	223.1370, 10.0400, 5.2720

Conversions

Conversions Part 2

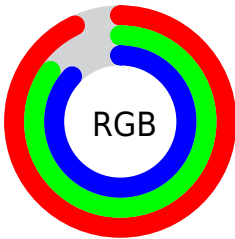
Format	Color
R _Y B	236, 217, 221
Decimal	15522269
CIE Lab	88.29, 7.22, 0.39
CIE LCh	88, 7.229, 3.077
Yxy	72.6775, 0.3238, 0.3248
Android (android.graphics.Color)	4293712349 (0xFFECD9DD)
YUV	223.1370, -1.0535, 11.2809
Hunter-Lab	85.2511, 2.5269, 4.9959

Details

The YIQ color $223.1370, 10.0400, 5.2720$ is a light color, and the websafe version is hex $CCCCCC$. A complement of this color would be $229.8630, -10.0400, -5.2720$, and the grayscale version is $223.0000, -0.0000, -0.0000$.

A 20% lighter version of the original color is $255.0000, -0.0000, -0.0000$, and $167.8380, 9.4440, 5.0600$ is the 20% darker color. If you saturate the color by 10%, you get $206.8830, 22.7390, 11.9150$, and if you desaturate by 10%, it is $239.3910, -2.6590, -1.3710$.

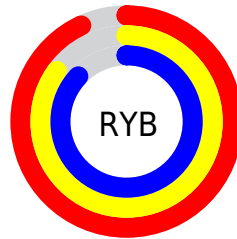
Distribution



Red (93%)

Green (85%)

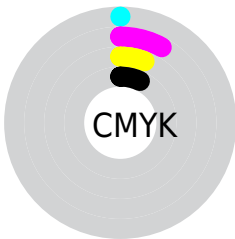
Blue (87%)



Red (93%)

Yellow (85%)

Blue (87%)

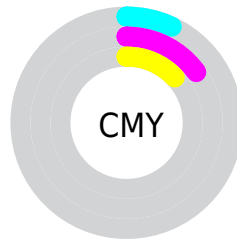


Cyan (0%)

Magenta (8%)

Yellow (6%)

Black (7%)



Cyan (7%)

Magenta (15%)

Yellow (13%)

Brightness & Saturation Gradients

These gradients show how the YIQ color 223.1370, 10.0400, 5.2720 changes by changing the brightness by 10 percent. The first figure shows a shift by +10% for each color and the second figure -10%.

Similar to the brightness gradients but the following saturation gradients show a change of the YIQ color 223.1370, 10.0400, 5.2720 by changing the saturation by 10% instead.

■ 223.1370, 10.0400,
5.2720

■ 223.1370, 10.0400,
5.2720

255.0000, -0.0000,
-0.0000

■ 195.1370, 10.0400,
5.2720

■ 167.8380, 9.4440,
5.0600

■ 141.5390, 8.8480,
4.8480

■ 116.1260, 8.5730,
4.3250

■ 91.2400, 8.2520,
4.6360

■ 67.8270, 7.9770,
4.1130

■ 45.5280, 7.3810,

3.9010

■ 24.9300, 6.1890,
3.4770

■ 0.0000, 0.0000,
0.0000

■ 223.1370, 10.0400,
5.2720

■ 223.1370, 10.0400,
5.2720

■ 206.8830, 22.7390,
11.9150

■ 239.3910, -2.6590,
-1.3710

■ 191.3300, 34.8420,
18.3460

■ 249.3190,
-11.3240, -4.0280

■ 175.0760, 47.5410,
24.9890

■ 159.5230, 59.6440,
31.4200

■ 143.2690, 72.3430,
38.0630

■ 127.0150, 85.0420,
44.7060

■ 111.4620, 97.1450,
51.1370

■ 95.2080, 109.8440,
57.7800

■ 79.5410, 122.2680,
63.9000

Harmonies

Analogous

The Analogous color harmony consists of three colors that are next to each other on the color wheel.



223.0270, 4.5380, 5.8660



223.1370, 10.0400, 5.2720



222.6380, 12.8830, 3.3070

Triad

The Triadic color harmony groups three colors that are evenly spaced from another and form a triangle on the color wheel.



223.1370, 10.0400, 5.2720



220.3220, 1.7890, -4.8910



220.6550, -12.1500, -0.0700

Complementary

The Complementary color scheme is a pair of colors which are on the opposite of each other on the color wheel.



223.1370, 10.0400, 5.2720



229.8630, -10.0400, -5.2720

Split Complementary

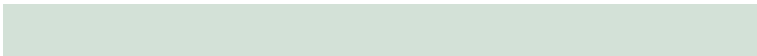
Split-complementary colors differ from the complementary color scheme. The scheme consists of three colors, the original color and two neighbors of the complement color.



219.4760, -13.2040, -2.9960



223.1370, 10.0400, 5.2720



219.6740, -5.1340, -6.0780

Square

The Square scheme is like the rectangle color scheme, but the four colors are evenly spaced on the color wheel.



223.1370, 10.0400, 5.2720



221.3120, 7.7490, -2.7710



219.5640, -10.6360, -5.4840



221.6880, -7.7490, 2.7710

Rectangle

The Rectangle color scheme consists of four colors that form a rectangle on the color wheel.



223.1370, 10.0400, 5.2720



222.2850, 12.3790, 1.4270



219.5640, -10.6360, -5.4840



220.4160, -12.9750, -1.6390

Sweetspot

The Sweet Spot groups the original color and five complimentary colors.



223.1370, 10.0400, 5.2720



251.6090, 2.6590, 1.3710



223.6510, 2.8410, 9.0890



125.8970, 1.7880, 0.6360



0.0000, 0.0000, 0.0000



128.0000, -0.0000, -0.0000

Same Dimension

The Same Dimension uses a secret algorithm to generate beautiful new colors.



223.1370, 10.0400, 5.2720



238.0450, 13.2950, 6.8550



225.6160, 9.9490, 1.4130



109.5170, 5.9140, 2.9540



58.4510, 95.6780, 50.1900



17.4000, 28.6530, 14.8690

Inverse Universe

The Inverse Universe completely reimagines the original color for something new.



223.1370, 10.0400, 5.2720



238.0450, 13.2950, 6.8550



227.3840, -9.9490, -1.4130



109.5170, 5.9140, 2.9540



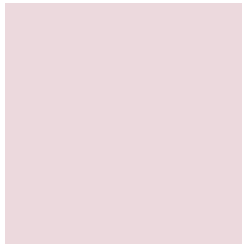
58.4510, 95.6780, 50.1900



17.4000, 28.6530, 14.8690

Previews

White Background



This preview shows how the YIQ color 223.1370, 10.0400, 5.2720 looks on a white background.

Color Contrast Check

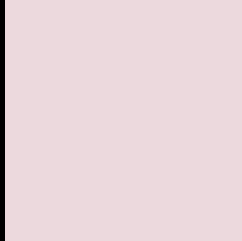
Large Text (above 18pt) WCAG AA × Fail

Any Text WCAG AA × Fail

Large Text (above 18pt) WCAG AAA × Fail

Any Text WCAG AAA × Fail

Black Background



This preview shows how the YIQ color 223.1370, 10.0400, 5.2720 looks on a black background.

Color Contrast Check

Large Text (above 18pt) WCAG AA ✓ Pass

Any Text WCAG AA ✓ Pass

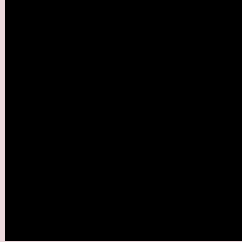
Large Text (above 18pt) WCAG AAA ✓ Pass

Any Text WCAG AAA ✓ Pass

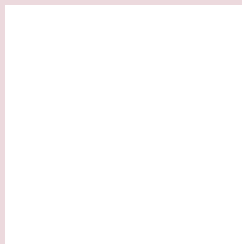
If you want to check with other color combinations, try the [Color Contrast Checker](#).

YIQ 223.1370, 10.0400, 5.2720

Background



This preview shows how black text looks on a background with the YIQ color 223.1370, 10.0400, 5.2720.



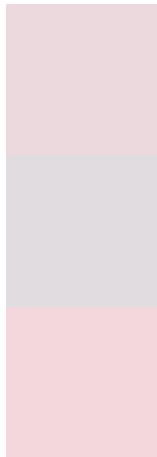
This preview shows how white text looks on a background with the YIQ color 223.1370, 10.0400,

5.2720.

Color Blindness Simulation

Color vision deficiency is a very complex topic, and I could not describe the different causes any better than Wikipedia does, so if you want to learn more, you should check out their [article about color blindness](#).

Dichromacy



Original Color

223.1370, 10.0400, 5.2720

Protanopia

221.8370, 2.0170, 1.9930

Deuteranopia

224.0560, 14.7620, 7.8020



Tritanopia

223.8150, 8.2510, 10.1630

Trichromacy



Original Color

223.1370, 10.0400, 5.2720

Protanomaly

222.3320, 4.9970, 3.0530

Deuteranomaly

223.7460, 12.6990, 6.6430

Tritanomaly

223.6470, 8.6640, 8.1840

Monochromacy



Original Color

223.1370, 10.0400, 5.2720

Achromatopsia

223.0000, -0.0000, -0.0000

Achromatomaly

223.2070, 3.8510, 1.7950

CSS Examples

Text

The CSS property to change the color of the text to YIQ 223.1370, 10.0400, 5.2720 is called "color". The color property can be set on classes, ids or directly on the HTML element.

This example shows how text in the color `rgb(236, 217, 221)` looks like.

```
.text, #text, p{  
    color:rgb(236, 217, 221)  
}
```

If you want to add a text shadow in that color use the text-shadow property, you can generate a text shadow directly with our [CSS Text Shadow Generator](#).

Here you see how black text with a 4 pixel rgb(236, 217, 221) colored shadow looks like.

```
.shadow{ text-shadow: 4px 4px 2px rgb(236, 217, 221) }
```

Border

The CSS property to change the border of an element to YIQ 223.1370, 10.0400, 5.2720 is called "border". The border property can be set on classes, ids or directly on the HTML element.

This example shows the color as border, it can be applied via the CSS property "border" or "border-color".

```
.border, #border, table{ border:4px solid rgb(236, 217, 221) }
```


If only the border color should be changed use the property `border-color`.

```
.border{ border-color:rgb(236, 217, 221) }
```

If you want to add a box shadow in that color use:

Here you see how a box with a 4 pixel `rgb(236, 217, 221)` colored shadow looks like.

```
.boxshadow{ -moz-box-shadow:4px 4px 4px  
4px rgb(236, 217, 221); -webkit-box-  
shadow:4px 4px 4px 4px rgb(236, 217, 221);  
box-shadow:4px 4px 4px 4px rgb(236, 217,  
221) }
```

Background

The CSS property to change the background color of an element to YIQ 223.1370, 10.0400, 5.2720 is called "background". The background property can be set on classes, ids or directly on the HTML element.

```
.background, #background, body{  
background: rgb(236, 217, 221) }
```

If only the background color should be changed can be used:

```
.background{ background-color: rgb(236,  
217, 221) }
```

This example shows the color as background, it is applied via the CSS property "background".

To optimize and compress your CSS code, you can use our [online CSS compressor and optimizer](#) based on csstidy. If you want to create a linear or radial gradient as background or border, check our [CSS Gradient Generator](#).

Hey! You found this booklet interesting? Support Converting Colors with the new Membership Option!

The pro membership hides all ads, plus gives you double the colors in the color bucket, and more awesome pro features!

[Learn more, Memberships starting at \\$2.50/m!](#)

**Follow me
on Twitter!**

@ConvertingColor