

Converting Colors

YIQ(223.5240, 13.2040, 2.9960)

Have a look what the booklet for
YIQ(223.5240, 13.2040, 2.9960)
contains.

YIQ(223.5240, 13.2040, 2.9960)	3
<i>Conversions</i>	4
<i>Details</i>	6
<i>Harmonies</i>	12
<i>Previews</i>	24
<i>Color Blindness Simulation</i>	28
<i>CSS Examples</i>	31

Color

**YIQ(223.5240, 13.2040,
2.9960)**

Conversions

Conversions Part 1

Format	Color
Hex	EEDAD6
RGB	238, 218, 214
RGB Percent	93%, 85%, 84%
CMY	0.0666, 0.1451, 0.1607
CMYK	0.00, 0.08, 0.10, 0.07
HSL	10°, 41%, 89%
HSV	10°, 10%, 93%
XYZ	72.4724, 73.1733, 73.9320
YIQ	223.5240, 13.2040, 2.9960

Conversions

Conversions Part 2

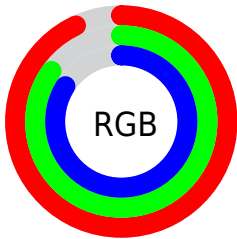
Format	Color
R _Y B	238, 219, 214
Decimal	15653590
CIE Lab	88.53, 6.23, 4.44
CIE LCh	89, 7.646, 35.477
Yxy	73.1733, 0.3301, 0.3332
Android (android.graphics.Color)	4293843670 (0xFFEEDAD6)
YUV	223.5240, -4.6953, 12.6955
Hunter-Lab	85.5414, 1.5313, 8.6357

Details

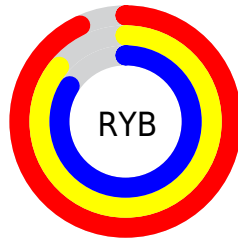
The YIQ color $223.5240, 13.2040, 2.9960$ is a light color, and the websafe version is hex `CCCCCC`. A complement of this color would be $228.4760, -13.2040, -2.9960$, and the grayscale version is $224.0000, -0.0000, 0.0000$.

A 20% lighter version of the original color is $255.0000, -0.0000, -0.0000$, and $168.2250, 12.6080, 2.7840$ is the 20% darker color. If you saturate the color by 10%, you get $209.0480, 26.4080, 5.9920$, and if you desaturate by 10%, it is $238.0000, -0.0000, 0.0000$.

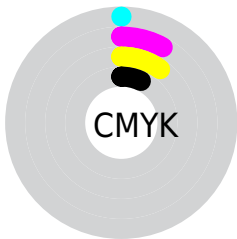
Distribution



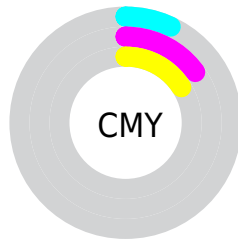
- Red (93%)
- Green (85%)
- Blue (84%)



- Red (93%)
- Yellow (86%)
- Blue (84%)



- Cyan (0%)
- Magenta (8%)
- Yellow (10%)
- Black (7%)



- Cyan (7%)
- Magenta (15%)
- Yellow (16%)

Brightness & Saturation Gradients

These gradients show how the YIQ color 223.5240, 13.2040, 2.9960 changes by changing the brightness by 10 percent. The first figure shows a shift by +10% for each color and the second figure -10%.

Similar to the brightness gradients but the following saturation gradients show a change of the YIQ color 223.5240, 13.2040, 2.9960 by changing the saturation by 10% instead.

223.5240, 13.2040,
2.9960

223.5240, 13.2040,
2.9960

255.0000, -0.0000,
-0.0000

195.5240, 13.2040,
2.9960

168.2250, 12.6080,
2.7840

141.9260, 12.0120,
2.5720

116.0400, 11.6910,
2.8830

91.7410, 11.0950,
2.6710

68.1430, 9.9030,
2.2470

45.8440, 9.3070,

2.0350

■ 24.8440, 9.3070,
2.0350

■ 0.0000, 0.0000,
0.0000

■ 223.5240, 13.2040,
2.9960

■ 223.5240, 13.2040,
2.9960

■ 209.0480, 26.4080,
5.9920

■ 238.0000, -0.0000,
0.0000

■ 194.5720, 39.6120,
8.9880

■ 249.9170,
-10.1320, -3.6040

■ 180.2100, 52.4950,
12.2950

■ 166.3210, 65.4240,
14.7680

■ 151.8450, 78.6280,
17.7640

■ 137.3690, 91.8320,
20.7600

■ 122.8930,
105.0360, 23.7560

■ 108.5310,
117.9190, 27.0630

■ 94.0550, 131.1230,
30.0590

Harmonies

Analogous

The Analogous color harmony consists of three colors that are next to each other on the color wheel.



223.7350, 11.2320, 5.6960



223.5240, 13.2040, 2.9960



222.9320, 11.8750, -0.4530

Triad

The Triadic color harmony groups three colors that are evenly spaced from another and form a triangle on the color wheel.



223.5240, 13.2040, 2.9960



220.3750, -5.7300, -6.2900



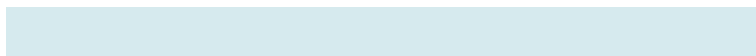
221.9160, -8.3910, 3.3930

Complementary

The Complementary color scheme is a pair of colors which are on the opposite of each other on the color wheel.



223.5240, 13.2040, 2.9960



228.4760, -13.2040, -2.9960

Split Complementary

Split-complementary colors differ from the complementary color scheme. The scheme consists of three colors, the original color and two neighbors of the complement color.



221.3560, -12.7460, -0.2820



223.5240, 13.2040, 2.9960



220.2650, -11.2320, -5.6960

Square

The Square scheme is like the rectangle color scheme, but the four colors are evenly spaced on the color wheel.



223.5240, 13.2040, 2.9960



220.9090, 1.5140, -5.4140



220.1770, -13.8000, -3.2080



223.0910, -1.5140, 5.4140

Rectangle

The Rectangle color scheme consists of four colors that form a rectangle on the color wheel.



223.5240, 13.2040, 2.9960



222.2090, 9.5370, -2.1350



220.1770, -13.8000, -3.2080



221.9050, -9.8580, 2.4460

Sweetspot

The Sweet Spot groups the original color and five complimentary colors.



223.5240, 13.2040, 2.9960



250.5660, 4.2180, 0.6500



223.4560, 7.8840, 11.3080



124.3810, 3.3010, 0.7490



0.0000, 0.0000, 0.0000



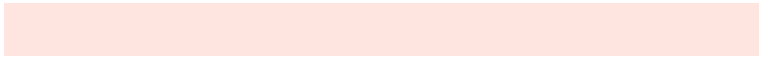
128.0000, -0.0000, -0.0000

Same Dimension

The Same Dimension uses a secret algorithm to generate beautiful new colors.



223.5240, 13.2040, 2.9960



236.2040, 17.1010, 3.9570



230.5680, 9.9040, -3.2800



112.7620, 6.6020, 1.4980



72.6260, 101.4140, 23.3180



22.0270, 30.9010, 7.1650

Inverse Universe

The Inverse Universe completely reimagines the original color for something new.



228.4760, -13.2040, -2.9960



242.7960, -17.1010, -3.9570



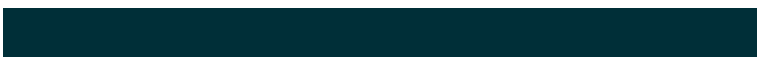
221.4320, -9.9040, 3.2800



115.2380, -6.6020, -1.4980



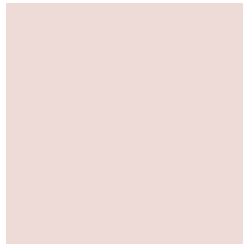
110.7870, -101.1390, -22.7950



33.9730, -30.9010, -7.1650

Previews

White Background



This preview shows how the YIQ color 223.5240, 13.2040, 2.9960 looks on a white background.

Color Contrast Check

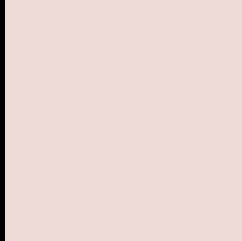
Large Text (above 18pt) WCAG AA × Fail

Any Text WCAG AA × Fail

Large Text (above 18pt) WCAG AAA × Fail

Any Text WCAG AAA × Fail

Black Background



This preview shows how the YIQ color 223.5240, 13.2040, 2.9960 looks on a black background.

Color Contrast Check

Large Text (above 18pt) WCAG AA ✓ Pass

Any Text WCAG AA ✓ Pass

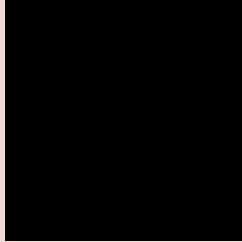
Large Text (above 18pt) WCAG AAA ✓ Pass

Any Text WCAG AAA ✓ Pass

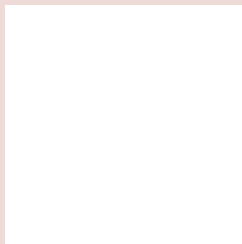
If you want to check with other color combinations, try the [Color Contrast Checker](#).

YIQ 223.5240, 13.2040, 2.9960

Background



This preview shows how black text looks on a background with the YIQ color 223.5240, 13.2040, 2.9960.



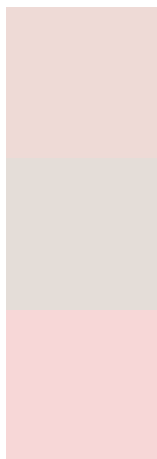
This preview shows how white text looks on a background with the YIQ color 223.5240, 13.2040,

2.9960.

Color Blindness Simulation

Color vision deficiency is a very complex topic, and I could not describe the different causes any better than Wikipedia does, so if you want to learn more, you should check out their [article about color blindness](#).

Dichromacy



Original Color

223.5240, 13.2040, 2.9960

Protanopia

222.5230, 5.7770, -0.0710

Deuteranopia

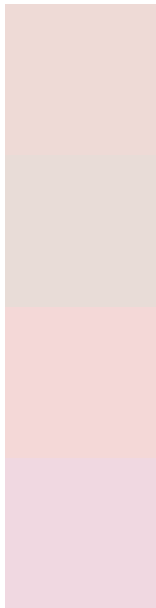
224.5680, 19.0720, 6.7840



Tritanopia

224.7120, 10.0390, 10.7990

Trichromacy



Original Color

223.5240, 13.2040, 2.9960

Protanomaly

223.0180, 8.7570, 0.9890

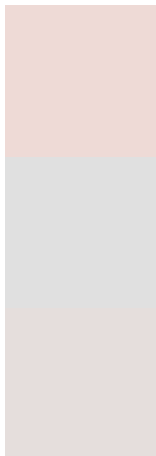
Deuteranomaly

224.2580, 17.0090, 5.6250

Tritanomaly

224.2020, 11.4150, 7.8870

Monochromacy



Original Color

223.5240, 13.2040, 2.9960

Achromatopsia

224.0000, -0.0000, 0.0000

Achromatomaly

223.8650, 4.8140, 0.8620

CSS Examples

Text

The CSS property to change the color of the text to YIQ 223.5240, 13.2040, 2.9960 is called "color". The color property can be set on classes, ids or directly on the HTML element.

This example shows how text in the color `rgb(238, 218, 214)` looks like.

```
.text, #text, p{  
    color:rgb(238, 218, 214)  
}
```

If you want to add a text shadow in that color use the text-shadow property, you can generate a text shadow directly with our [CSS Text Shadow Generator](#).

Here you see how black text with a 4 pixel rgb(238, 218, 214) colored shadow looks like.

```
.shadow{ text-shadow: 4px 4px 2px rgb(238, 218, 214) }
```

Border

The CSS property to change the border of an element to YIQ 223.5240, 13.2040, 2.9960 is called "border". The border property can be set on classes, ids or directly on the HTML element.

This example shows the color as border, it can be applied via the CSS property "border" or "border-color".

```
.border, #border, table{ border:4px solid rgb(238, 218, 214) }
```


If only the border color should be changed use the property `border-color`.

```
.border{ border-color:rgb(238, 218, 214) }
```

If you want to add a box shadow in that color use:

Here you see how a box with a 4 pixel `rgb(238, 218, 214)` colored shadow looks like.

```
.boxshadow{ -moz-box-shadow:4px 4px 4px  
4px rgb(238, 218, 214); -webkit-box-  
shadow:4px 4px 4px 4px rgb(238, 218, 214);  
box-shadow:4px 4px 4px 4px rgb(238, 218,  
214) }
```

Background

The CSS property to change the background color of an element to YIQ 223.5240, 13.2040, 2.9960 is called "background". The background property can be set on classes, ids or directly on the HTML element.

```
.background, #background, body{  
background: rgb(238, 218, 214) }
```

If only the background color should be changed can be used:

```
.background{ background-color: rgb(238,  
218, 214) }
```

This example shows the color as background, it is applied via the CSS property "background".

To optimize and compress your CSS code, you can use our [online CSS compressor and optimizer](#) based on csstidy. If you want to create a linear or radial gradient as background or border, check our [CSS Gradient Generator](#).

Hey! You found this booklet interesting? Support Converting Colors with the new Membership Option!

The pro membership hides all ads, plus gives you double the colors in the color bucket, and more awesome pro features!

[Learn more, Memberships starting at \\$2.50/m!](#)

**Follow me
on Twitter!**

@ConvertingColor