

Converting Colors

YIQ(223.7670, 8.2060, 5.4700)

Have a look what the booklet for
YIQ(223.7670, 8.2060, 5.4700)
contains.

- YIQ(223.7670, 8.2060, 5.4700) 3**
- Conversions* 4**
- Details* 6**
- Harmonies* 12**
- Previews* 24**
- Color Blindness Simulation* 28**
- CSS Examples* 31**

Color

**YIQ(223.7670, 8.2060,
5.4700)**

Conversions

Conversions Part 1

Format	Color
Hex	EBDAE0
RGB	235, 218, 224
RGB Percent	92%, 85%, 88%
CMY	0.0784, 0.1451, 0.1215
CMYK	0.00, 0.07, 0.05, 0.08
HSL	339°, 30%, 89%
HSV	339°, 7%, 92%
XYZ	72.7897, 73.1854, 80.8158
YIQ	223.7670, 8.2060, 5.4700

Conversions

Conversions Part 2

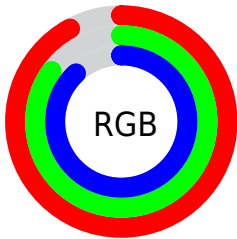
Format	Color
R _Y B	235, 218, 224
Decimal	15456992
CIE Lab	88.54, 6.87, -0.85
CIE LCh	89, 6.919, 352.965
Yxy	73.1854, 0.3210, 0.3227
Android (android.graphics.Color)	4293647072 (0xFFEBDAE0)
YUV	223.7670, 0.1149, 9.8513
Hunter-Lab	85.5485, 2.1686, 3.8739

Details

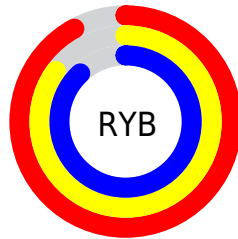
The YIQ color $223.7670, 8.2060, 5.4700$ is a light color, and the websafe version is hex `CCCCCC`. A complement of this color would be $229.2330, -8.2060, -5.4700$, and the grayscale version is $224.0000, -0.0000, 0.0000$.

A 20% lighter version of the original color is $255.0000, -0.0000, -0.0000$, and $168.4680, 7.6100, 5.2580$ is the 20% darker color. If you saturate the color by 10%, you get $207.9690, 19.6210, 13.3570$, and if you desaturate by 10%, it is $238.9780, -2.9340, -1.8940$.

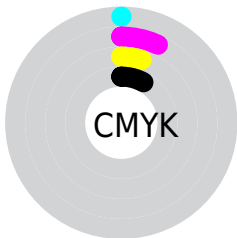
Distribution



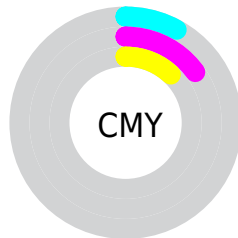
- Red (92%)
- Green (85%)
- Blue (88%)



- Red (92%)
- Yellow (85%)
- Blue (88%)



- Cyan (0%)
- Magenta (7%)
- Yellow (5%)
- Black (8%)



- Cyan (8%)
- Magenta (15%)
- Yellow (12%)

Brightness & Saturation Gradients

These gradients show how the YIQ color 223.7670, 8.2060, 5.4700 changes by changing the brightness by 10 percent. The first figure shows a shift by +10% for each color and the second figure -10%.

Similar to the brightness gradients but the following saturation gradients show a change of the YIQ color 223.7670, 8.2060, 5.4700 by changing the saturation by 10% instead.

■ 223.7670, 8.2060,
5.4700

■ 223.7670, 8.2060,
5.4700

255.0000, -0.0000,
-0.0000

■ 195.7670, 8.2060,
5.4700

■ 168.4680, 7.6100,
5.2580

■ 142.0550, 7.3350,
4.7350

■ 116.1690, 7.0140,
5.0460

■ 91.7560, 6.7390,
4.5230

■ 68.4570, 6.1430,
4.3110

■ 46.4570, 6.1430,

4.3110

■ 25.1580, 5.5470,
4.0990

■ 0.2990, 0.5960,
0.2120

■ 223.7670, 8.2060,
5.4700

■ 223.7670, 8.2060,
5.4700

■ 207.9690, 19.6210,
13.3570

■ 238.9780, -2.9340,
-1.8940

■ 192.7580, 30.7610,
20.7210

■ 248.9060,
-11.5990, -4.5510

■ 176.8460, 42.4970,
28.2970

■ 249.0200,
-11.9200, -4.2400

■ 161.6350, 53.6370,
35.6610

■ 145.8370, 65.0520,
43.5480

■ 130.6260, 76.1920,
50.9120

■ 114.8280, 87.6070,
58.7990

■ 99.5030, 99.0680,
65.8520

■ 83.7050, 110.4830,
73.7390

Harmonies

Analogous

The Analogous color harmony consists of three colors that are next to each other on the color wheel.



223.5430, 3.0250, 5.7530



223.7670, 8.2060, 5.4700



223.5670, 11.6450, 3.7170

Triad

The Triadic color harmony groups three colors that are evenly spaced from another and form a triangle on the color wheel.



223.7670, 8.2060, 5.4700



221.2190, 3.5770, -4.2550



220.7150, -12.3790, -1.4270

Complementary

The Complementary color scheme is a pair of colors which are on the opposite of each other on the color wheel.



223.7670, 8.2060, 5.4700



229.2330, -8.2060, -5.4700

Split Complementary

Split-complementary colors differ from the complementary color scheme. The scheme consists of three colors, the original color and two neighbors of the complement color.



220.1340, -12.2410, -3.9290



223.7670, 8.2060, 5.4700



220.7560, -2.4290, -5.5410

Square

The Square scheme is like the rectangle color scheme, but the four colors are evenly spaced on the color wheel.



223.7670, 8.2060, 5.4700



222.3230, 9.2160, -1.8240



220.2330, -8.2060, -5.4700



221.6770, -9.2160, 1.8240

Rectangle

The Rectangle color scheme consists of four colors that form a rectangle on the color wheel.



223.7670, 8.2060, 5.4700



223.3990, 12.0580, 1.7380



220.2330, -8.2060, -5.4700



220.8890, -12.9290, -2.4730

Sweetspot

The Sweet Spot groups the original color and five complimentary colors.



223.7670, 8.2060, 5.4700



251.7230, 2.3380, 1.6820



223.2270, 1.0990, 7.6190



126.0110, 1.4670, 0.9470



0.0000, 0.0000, 0.0000



128.0000, -0.0000, -0.0000

Same Dimension

The Same Dimension uses a secret algorithm to generate beautiful new colors.



223.7670, 8.2060, 5.4700



239.7890, 11.1400, 7.3640



224.2570, 9.5820, 2.5580



109.7450, 5.2720, 3.5760



61.4150, 87.3320, 58.2760



18.3120, 26.0850, 17.3570

Inverse Universe

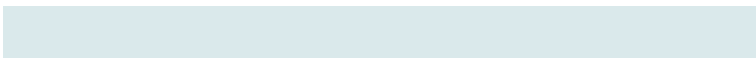
The Inverse Universe completely reimagines the original color for something new.



223.7670, 8.2060, 5.4700



239.7890, 11.1400, 7.3640



228.7430, -9.5820, -2.5580



109.7450, 5.2720, 3.5760



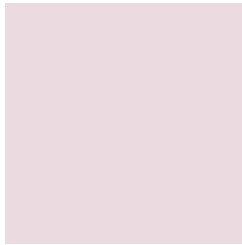
61.4150, 87.3320, 58.2760



18.3120, 26.0850, 17.3570

Previews

White Background



This preview shows how the YIQ color 223.7670, 8.2060, 5.4700 looks on a white background.

Color Contrast Check

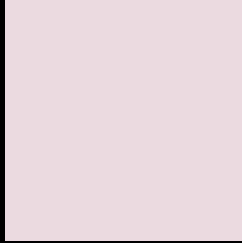
Large Text (above 18pt) WCAG AA × Fail

Any Text WCAG AA × Fail

Large Text (above 18pt) WCAG AAA × Fail

Any Text WCAG AAA × Fail

Black Background



This preview shows how the YIQ color 223.7670, 8.2060, 5.4700 looks on a black background.

Color Contrast Check

Large Text (above 18pt) WCAG AA ✓ Pass

Any Text WCAG AA ✓ Pass

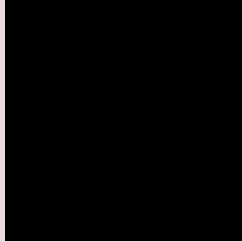
Large Text (above 18pt) WCAG AAA ✓ Pass

Any Text WCAG AAA ✓ Pass

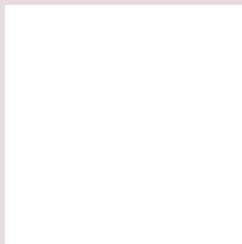
If you want to check with other color combinations, try the [Color Contrast Checker](#).

YIQ 223.7670, 8.2060, 5.4700

Background



This preview shows how black text looks on a background with the YIQ color 223.7670, 8.2060, 5.4700.



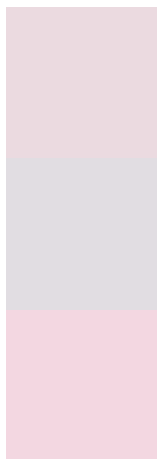
This preview shows how white text looks on a background with the YIQ color 223.7670, 8.2060,

5.4700.

Color Blindness Simulation

Color vision deficiency is a very complex topic, and I could not describe the different causes any better than Wikipedia does, so if you want to learn more, you should check out their [article about color blindness](#).

Dichromacy



Original Color

223.7670, 8.2060, 5.4700

Protanopia

222.7660, 0.7790, 2.4030

Deuteranopia

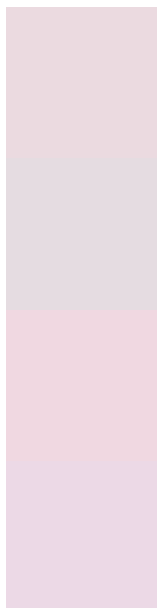
224.5120, 13.4780, 9.0460



Tritanopia

224.0320, 6.1420, 9.8380

Trichromacy



Original Color

223.7670, 8.2060, 5.4700

Protanomaly

223.2610, 3.7590, 3.4630

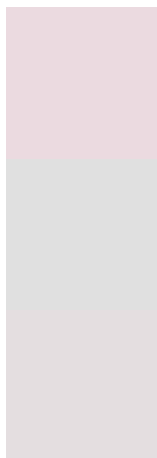
Deuteranomaly

224.2020, 11.4150, 7.8870

Tritanomaly

224.1630, 7.1510, 8.0710

Monochromacy



Original Color

223.7670, 8.2060, 5.4700

Achromatopsia

224.0000, -0.0000, 0.0000

Achromatomaly

224.0220, 2.9340, 1.8940

CSS Examples

Text

The CSS property to change the color of the text to YIQ 223.7670, 8.2060, 5.4700 is called "color". The color property can be set on classes, ids or directly on the HTML element.

This example shows how text in the color `rgb(235, 218, 224)` looks like.

```
.text, #text, p{  
    color:rgb(235, 218, 224)  
}
```

If you want to add a text shadow in that color use the text-shadow property, you can generate a text shadow directly with our [CSS Text Shadow Generator](#).

Here you see how black text with a 4 pixel rgb(235, 218, 224) colored shadow looks like.

```
.shadow{ text-shadow: 4px 4px 2px rgb(235, 218, 224) }
```

Border

The CSS property to change the border of an element to YIQ 223.7670, 8.2060, 5.4700 is called "border". The border property can be set on classes, ids or directly on the HTML element.

This example shows the color as border, it can be applied via the CSS property "border" or "border-color".

```
.border, #border, table{ border:4px solid rgb(235, 218, 224) }
```


If only the border color should be changed use the property border-color.

```
.border{ border-color:rgb(235, 218, 224) }
```

If you want to add a box shadow in that color use:

Here you see how a box with a 4 pixel rgb(235, 218, 224) colored shadow looks like.

```
.boxshadow{ -moz-box-shadow:4px 4px 4px  
4px rgb(235, 218, 224); -webkit-box-  
shadow:4px 4px 4px 4px rgb(235, 218, 224);  
box-shadow:4px 4px 4px 4px rgb(235, 218,  
224) }
```

Background

The CSS property to change the background color of an element to YIQ 223.7670, 8.2060, 5.4700 is called "background". The background property can be set on classes, ids or directly on the HTML element.

```
.background, #background, body{  
background: rgb(235, 218, 224) }
```

If only the background color should be changed can be used:

```
.background{ background-color: rgb(235,  
218, 224) }
```

This example shows the color as background, it is applied via the CSS property "background".

To optimize and compress your CSS code, you can use our [online CSS compressor and optimizer](#) based on csstidy. If you want to create a linear or radial gradient as background or border, check our [CSS Gradient Generator](#).

Hey! You found this booklet interesting? Support Converting Colors with the new Membership Option!

The pro membership hides all ads, plus gives you double the colors in the color bucket, and more awesome pro features!

[Learn more, Memberships starting at \\$2.50/m!](#)

**Follow me
on Twitter!**

@ConvertingColor