

Converting Colors

YIQ(224.0680, 14.4880, 1.7520)

Have a look what the booklet for
YIQ(224.0680, 14.4880, 1.7520)
contains.

- YIQ(224.0680, 14.4880, 1.7520)** 3
- Conversions*** 4
- Details*** 6
- Harmonies*** 12
- Previews*** 24
- Color Blindness Simulation*** 28
- CSS Examples*** 31

Color

**YIQ(224.0680, 14.4880,
1.7520)**

Conversions

Conversions Part 1

Format	Color
Hex	EFDBD3
RGB	239, 219, 211
RGB Percent	94%, 86%, 83%
CMY	0.0627, 0.1412, 0.1725
CMYK	0.00, 0.08, 0.12, 0.06
HSL	17°, 47%, 88%
HSV	17°, 12%, 94%
XYZ	72.6895, 73.7152, 72.0360
YIQ	224.0680, 14.4880, 1.7520

Conversions

Conversions Part 2

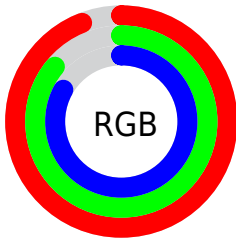
Format	Color
R _Y B	239, 222, 211
Decimal	15719379
CIE Lab	88.79, 5.57, 6.40
CIE LCh	89, 8.484, 48.940
Yxy	73.7152, 0.3328, 0.3375
Android (android.graphics.Color)	4293909459 (0xFFEFDBD3)
YUV	224.0680, -6.4425, 13.0954
Hunter-Lab	85.8576, 0.8725, 10.3549

Details

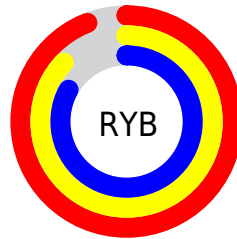
The YIQ color $224.0680, 14.4880, 1.7520$ is a light color, and the websafe version is hex $CCCCCC$. A complement of this color would be $225.9320, -14.4880, -1.7520$, and the grayscale version is $224.0000, -0.0000, 0.0000$.

A 20% lighter version of the original color is $255.0000, -0.0000, -0.0000$, and $168.8830, 13.5710, 1.8510$ is the 20% darker color. If you saturate the color by 10%, you get $211.3530, 26.8670, 3.1790$, and if you desaturate by 10%, it is $236.7830, 2.1090, 0.3250$.

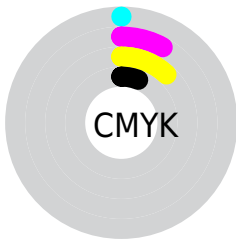
Distribution



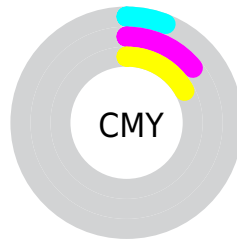
- Red (94%)
- Green (86%)
- Blue (83%)



- Red (94%)
- Yellow (87%)
- Blue (83%)



- Cyan (0%)
- Magenta (8%)
- Yellow (12%)
- Black (6%)



- Cyan (6%)
- Magenta (14%)
- Yellow (17%)

Brightness & Saturation Gradients

These gradients show how the YIQ color 224.0680, 14.4880, 1.7520 changes by changing the brightness by 10 percent. The first figure shows a shift by +10% for each color and the second figure -10%.

Similar to the brightness gradients but the following saturation gradients show a change of the YIQ color 224.0680, 14.4880, 1.7520 by changing the saturation by 10% instead.

224.0680, 14.4880,
1.7520

224.0680, 14.4880,
1.7520

255.0000, -0.0000,
-0.0000

196.0680, 14.4880,
1.7520

168.8830, 13.5710,
1.8510

142.4700, 13.2960,
1.3280

116.5840, 12.9750,
1.6390

91.9860, 11.7830,
1.2150

68.6870, 11.1870,
1.0030

46.5020, 10.2700,

1.1020

■ 25.2030, 9.6740,
0.8900

■ 0.2990, 0.5960,
0.2120

■ 224.0680, 14.4880,
1.7520

■ 224.0680, 14.4880,
1.7520

■ 211.3530, 26.8670,
3.1790

■ 236.7830, 2.1090,
0.3250

■ 198.6380, 39.2460,
4.6060

■ 249.0420, -8.9860,
-2.3460

■ 185.9230, 51.6250,
6.0330

■ 250.2160, -9.5360,
-3.3920

■ 173.2080, 64.0040,
7.4600

■ 160.6070, 76.0620,
9.1980

■ 147.3050, 88.7160,
11.1480

■ 134.5900,
101.0950, 12.5750

■ 121.8750,
113.4740, 14.0020

■ 111.3770,
123.7440, 15.1040

Harmonies

Analogous

The Analogous color harmony consists of three colors that are next to each other on the color wheel.



224.8770, 13.7080, 4.8760



224.0680, 14.4880, 1.7520



222.9920, 11.6460, -1.8100

Triad

The Triadic color harmony groups three colors that are evenly spaced from another and form a triangle on the color wheel.



224.0680, 14.4880, 1.7520



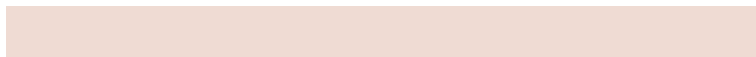
220.8090, -9.9480, -6.9400



223.5250, -5.7320, 4.7640

Complementary

The Complementary color scheme is a pair of colors which are on the opposite of each other on the color wheel.



224.0680, 14.4880, 1.7520



225.9320, -14.4880, -1.7520

Split Complementary

Split-complementary colors differ from the complementary color scheme. The scheme consists of three colors, the original color and two neighbors of the complement color.



222.4100, -12.8380, 1.3860



224.0680, 14.4880, 1.7520



220.5250, -14.9000, -5.3000

Square

The Square scheme is like the rectangle color scheme, but the four colors are evenly spaced on the color wheel.



224.0680, 14.4880, 1.7520



221.1150, -2.0620, -6.6860



221.3340, -15.6800, -2.1760



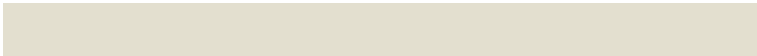
224.2980, 2.3370, 7.2090

Rectangle

The Rectangle color scheme consists of four colors that form a rectangle on the color wheel.



224.0680, 14.4880, 1.7520



222.3720, 7.5200, -4.1280



221.3340, -15.6800, -2.1760



223.3290, -8.1160, 3.9160

Sweetspot

The Sweet Spot groups the original color and five complimentary colors.



224.0680, 14.4880, 1.7520



249.7510, 5.1350, 0.5510



221.6520, 10.2680, 12.1560



124.2670, 3.6220, 0.4380



0.0000, 0.0000, 0.0000



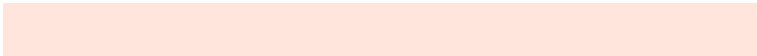
128.0000, -0.0000, -0.0000

Same Dimension

The Same Dimension uses a secret algorithm to generate beautiful new colors.



224.0680, 14.4880, 1.7520



235.6340, 18.7060, 2.4020



232.2860, 10.6380, -5.5700



113.3490, 6.3270, 0.9750



85.5400, 95.3640, 11.8120



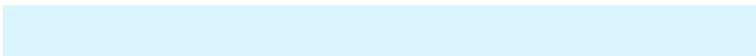
26.1360, 28.9760, 3.5040

Inverse Universe

The Inverse Universe completely reimagines the original color for something new.



225.9320, -14.4880, -1.7520



238.3660, -18.7060, -2.4020



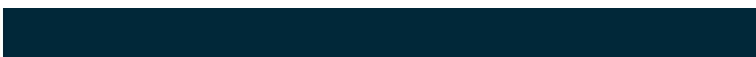
217.7140, -10.6380, 5.5700



114.0640, -6.0520, -0.4520



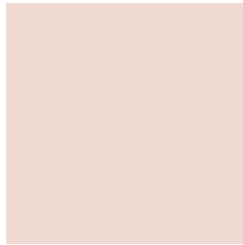
97.8730, -95.0890, -11.2890



29.8640, -28.9760, -3.5040

Previews

White Background



This preview shows how the YIQ color 224.0680, 14.4880, 1.7520 looks on a white background.

Color Contrast Check

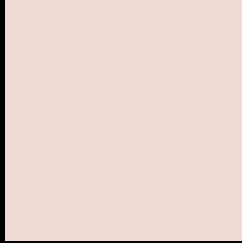
Large Text (above 18pt) WCAG AA × Fail

Any Text WCAG AA × Fail

Large Text (above 18pt) WCAG AAA × Fail

Any Text WCAG AAA × Fail

Black Background



This preview shows how the YIQ color 224.0680, 14.4880, 1.7520 looks on a black background.

Color Contrast Check

Large Text (above 18pt) WCAG AA ✓ Pass

Any Text WCAG AA ✓ Pass

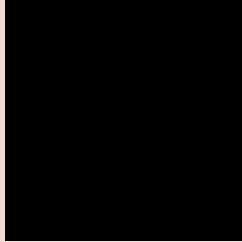
Large Text (above 18pt) WCAG AAA ✓ Pass

Any Text WCAG AAA ✓ Pass

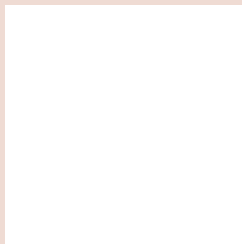
If you want to check with other color combinations, try the [Color Contrast Checker](#).

YIQ 224.0680, 14.4880, 1.7520

Background



This preview shows how black text looks on a background with the YIQ color 224.0680, 14.4880, 1.7520.



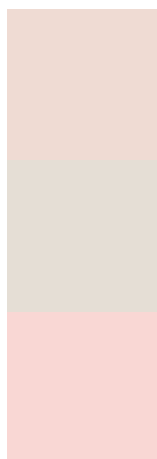
This preview shows how white text looks on a background with the YIQ color 224.0680, 14.4880,

1.7520.

Color Blindness Simulation

Color vision deficiency is a very complex topic, and I could not describe the different causes any better than Wikipedia does, so if you want to learn more, you should check out their [article about color blindness](#).

Dichromacy



Original Color

224.0680, 14.4880, 1.7520

Protanopia

223.0670, 7.0610, -1.3150

Deuteranopia

224.8240, 21.2270, 6.2750



Tritanopia

225.7120, 10.0390, 10.7990

Trichromacy



Original Color

224.0680, 14.4880, 1.7520

Protanomaly

223.5620, 10.0410, -0.2550

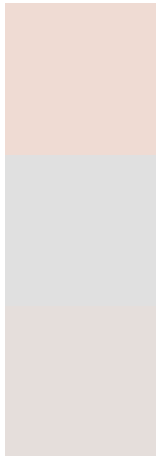
Deuteranomaly

224.2150, 18.5680, 4.9040

Tritanomaly

225.0880, 11.7360, 7.5760

Monochromacy



Original Color

224.0680, 14.4880, 1.7520

Achromatopsia

224.0000, -0.0000, 0.0000

Achromatomaly

223.7510, 5.1350, 0.5510

CSS Examples

Text

The CSS property to change the color of the text to YIQ 224.0680, 14.4880, 1.7520 is called "color". The color property can be set on classes, ids or directly on the HTML element.

This example shows how text in the color `rgb(239, 219, 211)` looks like.

```
.text, #text, p{  
    color:rgb(239, 219, 211)  
}
```

If you want to add a text shadow in that color use the text-shadow property, you can generate a text shadow directly with our [CSS Text Shadow Generator](#).

Here you see how black text with a 4 pixel rgb(239, 219, 211) colored shadow looks like.

```
.shadow{ text-shadow: 4px 4px 2px rgb(239, 219, 211) }
```

Border

The CSS property to change the border of an element to YIQ 224.0680, 14.4880, 1.7520 is called "border". The border property can be set on classes, ids or directly on the HTML element.

This example shows the color as border, it can be applied via the CSS property "border" or "border-color".

```
.border, #border, table{ border:4px solid rgb(239, 219, 211) }
```


If only the border color should be changed use the property `border-color`.

```
.border{ border-color:rgb(239, 219, 211) }
```

If you want to add a box shadow in that color use:

Here you see how a box with a 4 pixel `rgb(239, 219, 211)` colored shadow looks like.

```
.boxshadow{ -moz-box-shadow:4px 4px 4px  
4px rgb(239, 219, 211); -webkit-box-  
shadow:4px 4px 4px 4px rgb(239, 219, 211);  
box-shadow:4px 4px 4px 4px rgb(239, 219,  
211) }
```

Background

The CSS property to change the background color of an element to YIQ 224.0680, 14.4880, 1.7520 is called "background". The background property can be set on classes, ids or directly on the HTML element.

```
.background, #background, body{  
background: rgb(239, 219, 211) }
```

If only the background color should be changed can be used:

```
.background{ background-color: rgb(239,  
219, 211) }
```

This example shows the color as background, it is applied via the CSS property "background".

To optimize and compress your CSS code, you can use our [online CSS compressor and optimizer](#) based on csstidy. If you want to create a linear or radial gradient as background or border, check our [CSS Gradient Generator](#).

Hey! You found this booklet interesting? Support Converting Colors with the new Membership Option!

The pro membership hides all ads, plus gives you double the colors in the color bucket, and more awesome pro features!

[Learn more, Memberships starting at \\$2.50/m!](#)

**Follow me
on Twitter!**

@ConvertingColor