

Converting Colors

YIQ(228.2680, 11.0490, 3.5050)

Have a look what the booklet for
YIQ(228.2680, 11.0490, 3.5050)
contains.

- YIQ(228.2680, 11.0490, 3.5050) 3**
- Conversions* 4**
- Details* 6**
- Harmonies* 12**
- Previews* 24**
- Color Blindness Simulation* 28**
- CSS Examples* 31**

Color

**YIQ(228.2680, 11.0490,
3.5050)**

Conversions

Conversions Part 1

Format	Color
Hex	F1DFDE
RGB	241, 223, 222
RGB Percent	95%, 87%, 87%
CMY	0.0549, 0.1255, 0.1294
CMYK	0.00, 0.07, 0.08, 0.05
HSL	3°, 40%, 91%
HSV	3°, 8%, 95%
XYZ	75.8513, 76.7485, 79.9314
YIQ	228.2680, 11.0490, 3.5050

Conversions

Conversions Part 2

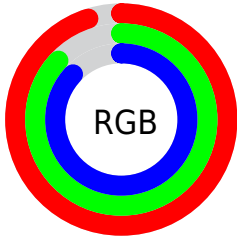
Format	Color
RYB	241, 223, 222
Decimal	15851486
CIELab	90.21, 6.00, 2.69
CIElCh	90, 6.574, 24.196
Yxy	76.7485, 0.3262, 0.3301
Android (android.graphics.Color)	4294041566 (0xFFFF1DFDE)
YUV	228.2680, -3.0901, 11.1660
Hunter-Lab	87.6062, 1.2381, 7.2285

Details

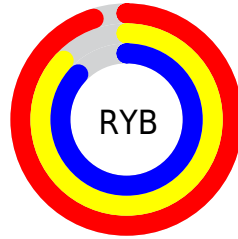
The YIQ color $228.2680, 11.0490, 3.5050$ is a light color, and the websafe version is hex `CCCCCC`. A complement of this color would be $234.7320, -11.0490, -3.5050$, and the grayscale version is $228.0000, 0.0000, 0.0000$.

A 20% lighter version of the original color is $255.0000, -0.0000, -0.0000$, and $172.9690, 10.4530, 3.2930$ is the 20% darker color. If you saturate the color by 10%, you get $212.0310, 25.0780, 8.0700$, and if you desaturate by 10%, it is $244.5050, -2.9800, -1.0600$.

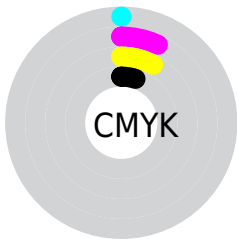
Distribution



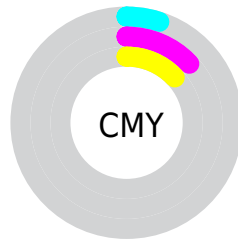
- Red (95%)
- Green (87%)
- Blue (87%)



- Red (95%)
- Yellow (87%)
- Blue (87%)



- Cyan (0%)
- Magenta (7%)
- Yellow (8%)
- Black (5%)



- Cyan (5%)
- Magenta (13%)
- Yellow (13%)

Brightness & Saturation Gradients

These gradients show how the YIQ color 228.2680, 11.0490, 3.5050 changes by changing the brightness by 10 percent. The first figure shows a shift by +10% for each color and the second figure -10%.

Similar to the brightness gradients but the following saturation gradients show a change of the YIQ color 228.2680, 11.0490, 3.5050 by changing the saturation by 10% instead.

■ 228.2680, 11.0490,
3.5050

■ 228.2680, 11.0490,
3.5050

255.0000, -0.0000,
-0.0000

■ 200.2680, 11.0490,
3.5050

■ 172.9690, 10.4530,
3.2930

■ 146.0830, 10.1320,
3.6040

■ 120.6700, 9.8570,
3.0810

■ 95.4850, 8.9400,
3.1800

■ 72.0720, 8.6650,
2.6570

■ 49.7730, 8.0690,

2.4450

■ 28.4740, 7.4730,
2.2330

■ 4.7840, 9.5360,
3.3920

■ 228.2680, 11.0490,
3.5050

■ 228.2680, 11.0490,
3.5050

■ 212.0310, 25.0780,
8.0700

■ 244.5050, -2.9800,
-1.0600

■ 195.7940, 39.1070,
12.6350

■ 250.8140, -8.3440,
-2.9680

■ 179.5570, 53.1360,
17.2000

■ 163.9070, 66.8900,
21.2420

■ 147.6700, 80.9190,
25.8070

■ 131.3190, 95.2690,
30.0610

■ 115.0820,
109.2980, 34.6260

■ 98.8450, 123.3270,
39.1910

■ 82.6080, 137.3560,
43.7560

Harmonies

Analogous

The Analogous color harmony consists of three colors that are next to each other on the color wheel.



228.3540, 7.9310, 4.9470



228.2680, 11.0490, 3.5050



227.6870, 11.1870, 1.0030

Triad

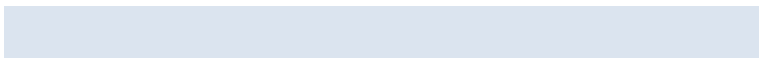
The Triadic color harmony groups three colors that are evenly spaced from another and form a triangle on the color wheel.



228.2680, 11.0490, 3.5050



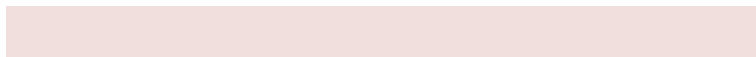
225.4570, -3.0250, -5.7530



226.5630, -8.8950, 1.5130

Complementary

The Complementary color scheme is a pair of colors which are on the opposite of each other on the color wheel.



228.2680, 11.0490, 3.5050



234.7320, -11.0490, -3.5050

Split Complementary

Split-complementary colors differ from the complementary color scheme. The scheme consists of three colors, the original color and two neighbors of the complement color.



226.0140, -11.7830, -1.2150



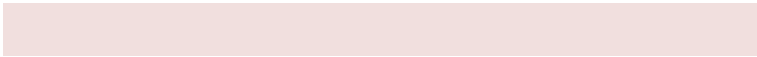
228.2680, 11.0490, 3.5050



225.2330, -8.2060, -5.4700

Square

The Square scheme is like the rectangle color scheme, but the four colors are evenly spaced on the color wheel.



228.2680, 11.0490, 3.5050



226.2190, 3.5770, -4.2550



225.4330, -11.6450, -3.7170



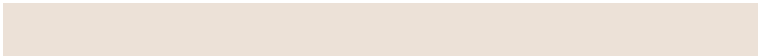
227.6670, -3.2560, 3.9440

Rectangle

The Rectangle color scheme consists of four colors that form a rectangle on the color wheel.



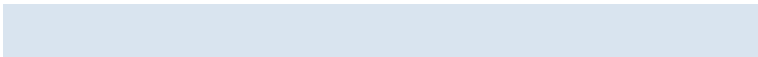
228.2680, 11.0490, 3.5050



227.1490, 9.7660, -0.7780



225.4330, -11.6450, -3.7170



225.9650, -10.0870, 1.0890

Sweetspot

The Sweet Spot groups the original color and five complimentary colors.



228.2680, 11.0490, 3.5050



251.4950, 2.9800, 1.0600



229.7330, 5.5460, 9.6260



125.8970, 1.7880, 0.6360



0.0000, 0.0000, 0.0000



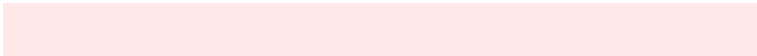
128.0000, -0.0000, -0.0000

Same Dimension

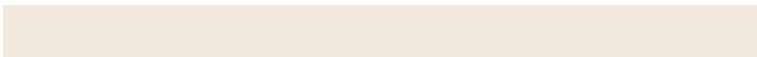
The Same Dimension uses a secret algorithm to generate beautiful new colors.



228.2680, 11.0490, 3.5050



239.4640, 13.4330, 4.3530



233.5510, 8.5740, -1.2020



111.5880, 7.1520, 2.5440



60.8860, 106.9140, 33.7780



18.5050, 32.5510, 10.3030

Inverse Universe

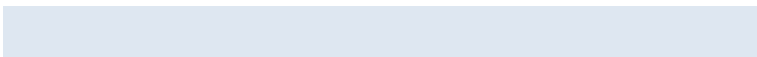
The Inverse Universe completely reimagines the original color for something new.



234.7320, -11.0490, -3.5050



247.5360, -13.4330, -4.3530



229.4490, -8.5740, 1.2020



115.8250, -6.8770, -2.0210



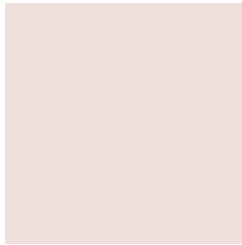
123.1140, -106.9140, -33.7780



37.4950, -32.5510, -10.3030

Previews

White Background



This preview shows how the YIQ color 228.2680, 11.0490, 3.5050 looks on a white background.

Color Contrast Check

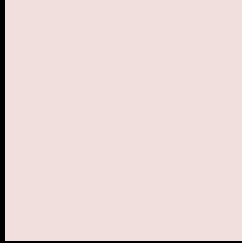
Large Text (above 18pt) WCAG AA × Fail

Any Text WCAG AA × Fail

Large Text (above 18pt) WCAG AAA × Fail

Any Text WCAG AAA × Fail

Black Background



This preview shows how the YIQ color 228.2680, 11.0490, 3.5050 looks on a black background.

Color Contrast Check

Large Text (above 18pt) WCAG AA ✓ Pass

Any Text WCAG AA ✓ Pass

Large Text (above 18pt) WCAG AAA ✓ Pass

Any Text WCAG AAA ✓ Pass

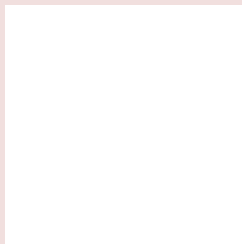
If you want to check with other color combinations, try the [Color Contrast Checker](#).

YIQ 228.2680, 11.0490, 3.5050

Background



This preview shows how black text looks on a background with the YIQ color 228.2680, 11.0490, 3.5050.



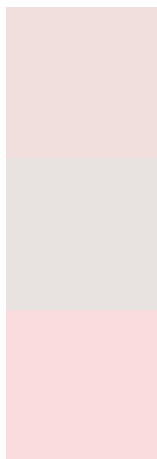
This preview shows how white text looks on a background with the YIQ color 228.2680, 11.0490,

3.5050.

Color Blindness Simulation

Color vision deficiency is a very complex topic, and I could not describe the different causes any better than Wikipedia does, so if you want to learn more, you should check out their [article about color blindness](#).

Dichromacy



Original Color

228.2680, 11.0490, 3.5050

Protanopia

227.5660, 4.2180, 0.6500

Deuteranopia

229.3120, 16.9170, 7.2930



Tritanopia

229.5160, 7.6550, 9.9510

Trichromacy



Original Color

228.2680, 11.0490, 3.5050

Protanomaly

227.7620, 6.6020, 1.4980

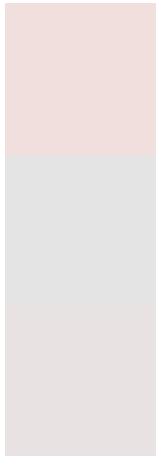
Deuteranomaly

229.0020, 14.8540, 6.1340

Tritanomaly

229.1200, 8.7100, 7.3500

Monochromacy



Original Color

228.2680, 11.0490, 3.5050

Achromatopsia

228.0000, 0.0000, 0.0000

Achromatomaly

228.0930, 4.1720, 1.4840

CSS Examples

Text

The CSS property to change the color of the text to YIQ 228.2680, 11.0490, 3.5050 is called "color". The color property can be set on classes, ids or directly on the HTML element.

This example shows how text in the color `rgb(241, 223, 222)` looks like.

```
.text, #text, p{  
    color:rgb(241, 223, 222)  
}
```

If you want to add a text shadow in that color use the text-shadow property, you can generate a text shadow directly with our [CSS Text Shadow Generator](#).

Here you see how black text with a 4 pixel rgb(241, 223, 222) colored shadow looks like.

```
.shadow{ text-shadow: 4px 4px 2px rgb(241, 223, 222) }
```

Border

The CSS property to change the border of an element to YIQ 228.2680, 11.0490, 3.5050 is called "border". The border property can be set on classes, ids or directly on the HTML element.

This example shows the color as border, it can be applied via the CSS property "border" or "border-color".

```
.border, #border, table{ border:4px solid rgb(241, 223, 222) }
```


If only the border color should be changed use the property border-color.

```
.border{ border-color:rgb(241, 223, 222) }
```

If you want to add a box shadow in that color use:

Here you see how a box with a 4 pixel rgb(241, 223, 222) colored shadow looks like.

```
.boxshadow{ -moz-box-shadow:4px 4px 4px  
4px rgb(241, 223, 222); -webkit-box-  
shadow:4px 4px 4px 4px rgb(241, 223, 222);  
box-shadow:4px 4px 4px 4px rgb(241, 223,  
222) }
```

Background

The CSS property to change the background color of an element to YIQ 228.2680, 11.0490, 3.5050 is called "background". The background property can be set on classes, ids or directly on the HTML element.

```
.background, #background, body{  
background: rgb(241, 223, 222) }
```

If only the background color should be changed can be used:

```
.background{ background-color: rgb(241,  
223, 222) }
```

This example shows the color as background, it is applied via the CSS property "background".

To optimize and compress your CSS code, you can use our [online CSS compressor and optimizer](#) based on csstidy. If you want to create a linear or radial gradient as background or border, check our [CSS Gradient Generator](#).

Hey! You found this booklet interesting? Support Converting Colors with the new Membership Option!

The pro membership hides all ads, plus gives you double the colors in the color bucket, and more awesome pro features!

[Learn more, Memberships starting at \\$2.50/m!](#)

**Follow me
on Twitter!**

@ConvertingColor