

# Converting Colors

YIQ(23.6400, 18.5690, -0.6230)

Have a look what the booklet for  
YIQ(23.6400, 18.5690, -0.6230)  
contains.

<b>YIQ(23.6400, 18.5690, -0.6230)</b> .....	3
<b><i>Conversions</i></b> .....	4
<b><i>Details</i></b> .....	6
<b><i>Harmonies</i></b> .....	12
<b><i>Previews</i></b> .....	24
<b><i>Color Blindness Simulation</i></b> .....	28
<b><i>CSS Examples</i></b> .....	31

# Color

**YIQ(23.6400, 18.5690,  
-0.6230)**

# Conversions

## Conversions Part 1

Format	Color
Hex	291302
RGB	41, 19, 2
RGB Percent	16%, 7%, 1%
CMY	0.8392, 0.9255, 0.9921
CMYK	0.00, 0.54, 0.95, 0.84
HSL	26°, 91%, 8%
HSV	26°, 95%, 16%
XYZ	1.1587, 0.9415, 0.1787
YIQ	23.6400, 18.5690, -0.6230

# Conversions

## Conversions Part 2

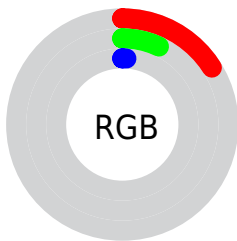
<b>Format</b>	<b>Color</b>
<b>R<sub>YB</sub></b>	41, 32, 2
Decimal	2691842
CIE <sub>Lab</sub>	8.49, 9.50, 12.09
CIE <sub>LCh</sub>	8, 15.372, 51.852
Yxy	0.9415, 0.5084, 0.4131
Android (android.graphics.Color)	4280881922 (0xFF291302)
YUV	23.6400, -10.6685, 15.2247
Hunter-Lab	9.7031, 4.3348, 5.7001

# Details

The YIQ color **23.6400, 18.5690, -0.6230** is a dark color, and the websafe version is hex **330000**. A complement of this color would be **19.3600, -18.5690, 0.6230**, and the grayscale version is **24.0000, -0.0000, 0.0000**.

A 20% lighter version of the original color is **67.4060, 19.3480, 1.7800**, and **0.0000, 0.0000, 0.0000** is the 20% darker color. If you saturate the color by 10%, you get **22.8250, 19.4860, -0.7220**, and if you desaturate by 10%, it is **25.2700, 16.7350, -0.4250**.

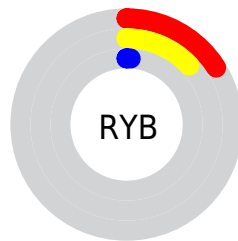
# Distribution



Red (16%)

Green (7%)

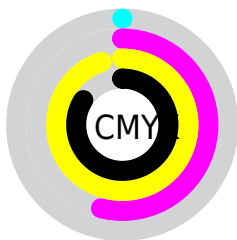
Blue (1%)



Red (16%)

Yellow (13%)

Blue (1%)

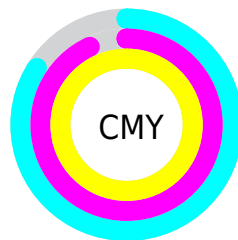


Cyan (0%)

Magenta (54%)

Yellow (95%)

Black (84%)



Cyan (84%)

Magenta (93%)

Yellow (99%)

# Brightness & Saturation Gradients

These gradients show how the YIQ color 23.6400, 18.5690, -0.6230 changes by changing the brightness by 10 percent. The first figure shows a shift by +10% for each color and the second figure -10%.

Similar to the brightness gradients but the following saturation gradients show a change of the YIQ color 23.6400, 18.5690, -0.6230 by changing the saturation by 10% instead.



■ 23.6400, 18.5690,  
-0.6230

■ 23.6400, 18.5690,  
-0.6230

■ 245.4650, 11.6920,  
-2.6440

■ 2.3920, 4.7680,  
1.6960

■ 67.4060, 19.3480,  
1.7800

■ 0.0000, 0.0000,  
0.0000

■ 91.5910, 20.2650,  
1.6810

■ 116.0750, 21.7780,  
1.7940

■ 141.6730, 22.9700,  
2.2180

■ 167.9720, 23.5660,  
2.4300

■ 196.0430, 24.8040,

2.0200

■ 223.4560, 25.0790,  
2.5430

■ 23.6400, 18.5690,  
-0.6230

■ 23.6400, 18.5690,  
-0.6230

■ 22.8250, 19.4860,  
-0.7220

■ 25.2700, 16.7350,  
-0.4250

■ 27.4870, 14.6260,  
-0.7500

■ 29.1170, 12.7920,  
-0.5520

■ 30.7470, 10.9580,  
-0.3540

■ 33.0780, 8.5280,  
-0.3680

■ 34.7080, 6.6940,  
-0.1700

■ 36.3380, 4.8600,  
0.0280

■ 38.5550, 2.7510,  
-0.2970

■ 40.1850, 0.9170,  
-0.0990

# Harmonies

## Analogous

The Analogous color harmony consists of three colors that are next to each other on the color wheel.



24.4860, 16.3670, 6.2470



23.6400, 18.5690, -0.6230



23.6670, 13.9390, -4.8210

# Triad

The Triadic color harmony groups three colors that are evenly spaced from another and form a triangle on the color wheel.



23.6400, 18.5690, -0.6230



20.0040, -14.9910, -9.1590



24.6820, -7.6120, 5.7960

# Complementary

The Complementary color scheme is a pair of colors which are on the opposite of each other on the color wheel.



23.6400, 18.5690, -0.6230



19.3600, -18.5690, 0.6230

# Split Complementary

Split-complementary colors differ from the complementary color scheme. The scheme consists of three colors, the original color and two neighbors of the complement color.



20.3920, -21.5950, 0.3970



23.6400, 18.5690, -0.6230



21.2580, -18.5220, -5.7380

# Square

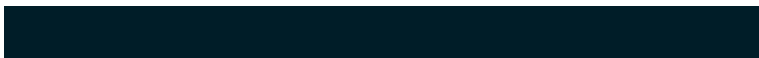
The Square scheme is like the rectangle color scheme, but the four colors are evenly spaced on the color wheel.



23.6400, 18.5690, -0.6230



20.8110, -4.2620, -10.8700



21.5830, -20.8150, -2.7270



25.5370, 3.1620, 8.7780



# Rectangle

The Rectangle color scheme consists of four colors that form a rectangle on the color wheel.



23.6400, 18.5690, -0.6230



23.3460, 10.4090, -6.9270



21.5830, -20.8150, -2.7270



23.2900, -12.3800, 4.1000

# Sweetspot

The Sweet Spot groups the original color and five complimentary colors.



23.6400, 18.5690, -0.6230



46.8930, 7.6110, -0.2690



16.1690, 16.1820, 15.1100



23.9250, 4.5850, -0.4950



156.0000, -0.0000, -0.0000



28.0000, -0.0000, 0.0000



# Same Dimension

The Same Dimension uses a secret algorithm to generate beautiful new colors.



23.6400, 18.5690, -0.6230



29.6470, 25.8590, -0.5810



34.7930, 13.3440, -10.5600



19.1850, 0.9170, -0.0990



46.8350, 39.8890, -1.5430



117.3920, 101.0520, -3.1720



# Inverse Universe

The Inverse Universe completely reimagines the original color for something new.



19.3600, -18.5690, 0.6230



23.7660, -25.5840, 1.1040



8.2070, -13.3440, 10.5600



19.4020, -1.1920, -0.4240



37.7520, -40.1640, 1.0200

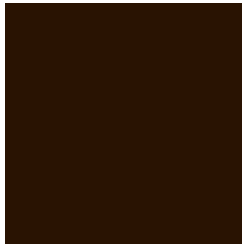


94.6080, -101.0520, 3.1720



# Previews

## White Background



This preview shows how the YIQ color 23.6400, 18.5690, -0.6230 looks on a white background.

## Color Contrast Check

Large Text (above 18pt) WCAG AA ✓ Pass

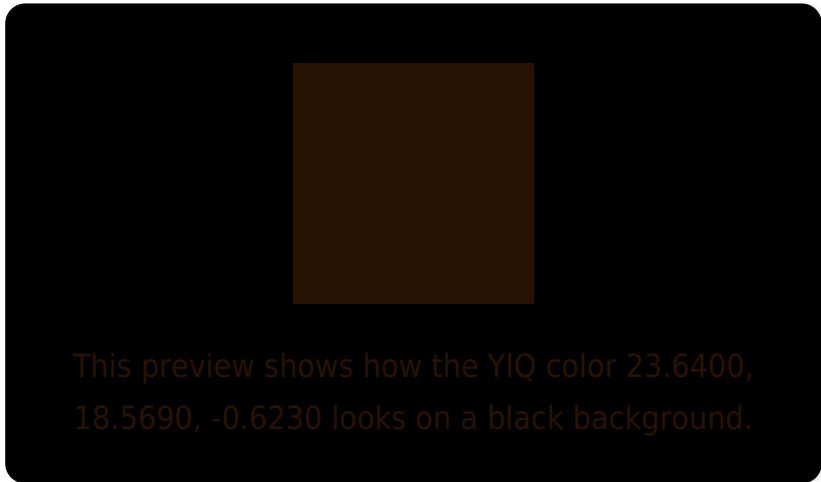
Any Text WCAG AA ✓ Pass

Large Text (above 18pt) WCAG AAA ✓ Pass

Any Text WCAG AAA ✓ Pass



# Black Background



## Color Contrast Check

Large Text (above 18pt) WCAG AA × Fail

Any Text WCAG AA × Fail

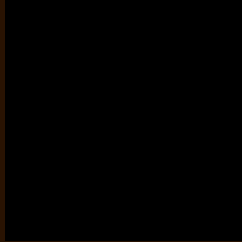
Large Text (above 18pt) WCAG AAA × Fail

Any Text WCAG AAA × Fail

If you want to check with other color combinations, try the [Color Contrast Checker](#).

**YIQ 23.6400, 18.5690, -0.6230**

## **Background**



This preview shows how black text looks on a background with the YIQ color 23.6400, 18.5690, -0.6230.



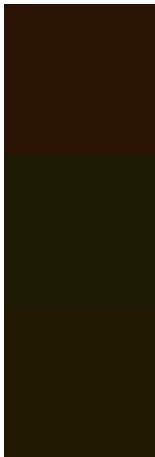
This preview shows how white text looks on a background with the YIQ color 23.6400, 18.5690,

-0.6230.

# Color Blindness Simulation

Color vision deficiency is a very complex topic, and I could not describe the different causes any better than Wikipedia does, so if you want to learn more, you should check out their [article about color blindness](#).

## Dichromacy



### Original Color

23.6400, 18.5690, -0.6230

### Protanopia

24.3890, 8.8500, -6.2060

### Deuteranopia

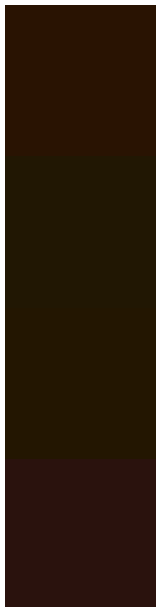
23.6560, 12.4720, -5.7680



## Tritanopia

25.2900, 13.9830, 5.3990

# Trichromacy



## Original Color

23.6400, 18.5690, -0.6230

## Protanomaly

23.7100, 12.3800, -4.1000

## Deuteranomaly

23.4930, 14.4890, -3.7750

## Tritanomaly

24.6060, 15.9090, 3.5330

# Monochromacy



## Original Color

23.6400, 18.5690, -0.6230

## Achromatopsia

24.0000, -0.0000, 0.0000

## Achromatomaly

23.7080, 6.6940, -0.1700

# CSS Examples

## Text

The CSS property to change the color of the text to YIQ 23.6400, 18.5690, -0.6230 is called "color". The color property can be set on classes, ids or directly on the HTML element.

This example shows how text in the color `rgb(41, 19, 2)` looks like.

```
.text, #text, p{  
    color:rgb(41, 19, 2)  
}
```

If you want to add a text shadow in that color use the text-shadow property, you can generate a text shadow directly with our [CSS Text Shadow Generator](#).

Here you see how black text with a 4 pixel rgb(41, 19, 2) colored shadow looks like.

```
.shadow{ text-shadow: 4px 4px 2px rgb(41, 19, 2) }
```

## Border

The CSS property to change the border of an element to YIQ 23.6400, 18.5690, -0.6230 is called "border". The border property can be set on classes, ids or directly on the HTML element.

This example shows the color as border, it can be applied via the CSS property "border" or "border-color".

```
.border, #border, table{ border:4px solid rgb(41, 19, 2) }
```



If only the border color should be changed use the property `border-color`.

```
.border{ border-color:rgb(41, 19, 2) }
```

If you want to add a box shadow in that color use:

Here you see how a box with a 4 pixel `rgb(41, 19, 2)` colored shadow looks like.

```
.boxshadow{ -moz-box-shadow:4px 4px 4px  
4px rgb(41, 19, 2); -webkit-box-shadow:4px  
4px 4px 4px rgb(41, 19, 2); box-shadow:4px  
4px 4px 4px rgb(41, 19, 2) }
```

# Background

The CSS property to change the background color of an element to YIQ 23.6400, 18.5690, -0.6230 is called "background". The background property can be set on classes, ids or directly on the HTML element.

```
.background, #background, body{  
background: rgb(41, 19, 2) }
```

If only the background color should be changed can be used:

```
.background{ background-color: rgb(41, 19,  
2) }
```

This example shows the color as background, it is applied via the CSS property "background".

To optimize and compress your CSS code, you can use our [online CSS compressor and optimizer](#) based on csstidy. If you want to create a linear or radial gradient as background or border, check our [CSS Gradient Generator](#).

# Hey! You found this booklet interesting? Support Converting Colors with the new Membership Option!

The pro membership hides all ads, plus gives you double the colors in the color bucket, and more awesome pro features!

**[Learn more, Memberships starting at \\$2.50/m!](#)**

**Follow me  
on Twitter!**

@ConvertingColor