

Converting Colors

YIQ(25.2840, 14.1200, 8.4240)

Have a look what the booklet for
YIQ(25.2840, 14.1200, 8.4240)
contains.

YIQ(25.2840, 14.1200, 8.4240)	3
<i>Conversions</i>	4
<i>Details</i>	6
<i>Harmonies</i>	12
<i>Previews</i>	24
<i>Color Blindness Simulation</i>	28
<i>CSS Examples</i>	31

Color

**YIQ(25.2840, 14.1200,
8.4240)**

Conversions

Conversions Part 1

Format	Color
Hex	2C1018
RGB	44, 16, 24
RGB Percent	17%, 6%, 9%
CMY	0.8274, 0.9373, 0.9058
CMYK	0.00, 0.64, 0.45, 0.83
HSL	343°, 47%, 12%
HSV	343°, 64%, 17%
XYZ	1.3896, 0.9721, 0.9792
YIQ	25.2840, 14.1200, 8.4240

Conversions

Conversions Part 2

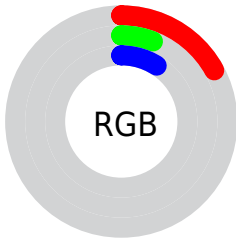
Format	Color
RYB	44, 16, 24
Decimal	2887704
CIELab	8.76, 15.55, 1.09
CIELCh	9, 15.589, 4.019
Yxy	0.9721, 0.4159, 0.2910
Android (android.graphics.Color)	4281077784 (0xFF2C1018)
YUV	25.2840, -0.6330, 16.4139
Hunter-Lab	9.8596, 7.9036, 1.0131

Details

The YIQ color **25.2840, 14.1200, 8.4240** is a dark color, and the websafe version is hex **330000**. A complement of this color would be **34.7160, -14.1200, -8.4240**, and the grayscale version is **25.0000, -0.0000, -0.0000**.

A 20% lighter version of the original color is **69.4800, 16.5040, 9.2720**, and **0.0000, 0.0000, 0.0000** is the 20% darker color. If you saturate the color by 10%, you get **22.5940, 16.1830, 9.5830**, and if you desaturate by 10%, it is **27.9740, 12.0570, 7.2650**.

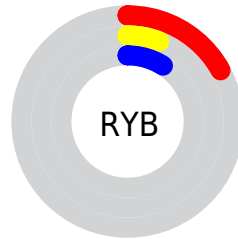
Distribution



 Red (17%)

 Green (6%)

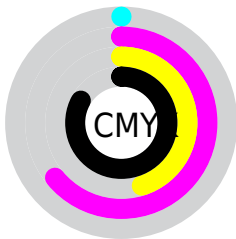
 Blue (9%)



 Red (17%)

 Yellow (6%)

 Blue (9%)

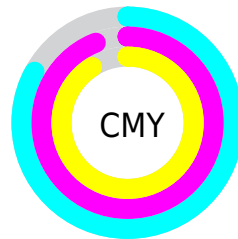


 Cyan (0%)


 Magenta (64%)

 Yellow (45%)

 Black (83%)



 Cyan (83%)

 Magenta (94%)

 Yellow (91%)

Brightness & Saturation Gradients

These gradients show how the YIQ color 25.2840, 14.1200, 8.4240 changes by changing the brightness by 10 percent. The first figure shows a shift by +10% for each color and the second figure -10%.

Similar to the brightness gradients but the following saturation gradients show a change of the YIQ color 25.2840, 14.1200, 8.4240 by changing the saturation by 10% instead.

■ 25.2840, 14.1200,
8.4240

■ 25.2840, 14.1200,
8.4240

■ 246.2120, 5.4550,
5.7670

■ 6.5780, 13.1120,
4.6640

■ 69.4800, 16.5040,
9.2720

■ 0.0000, 0.0000,
0.0000

■ 93.0780, 17.6960,
9.6960

■ 117.6760, 18.8880,
10.1200

■ 143.9750, 19.4840,
10.3320

■ 170.2740, 20.0800,
10.5440

■ 197.8720, 21.2720,

10.9680

■ 225.8720, 21.2720,
10.9680

■ 25.2840, 14.1200,
8.4240

■ 25.2840, 14.1200,
8.4240

■ 22.5940, 16.1830,
9.5830

■ 27.9740, 12.0570,
7.2650

■ 19.3170, 18.5210,
11.2650

■ 31.2510, 9.7190,
5.5830

■ 16.6270, 20.5840,
12.4240

■ 33.9410, 7.6560,
4.4240

■ 14.6380, 22.0510,
13.3710

■ 37.3320, 4.9970,
3.0530

■ 40.0220, 2.9340,
1.8940

■ 42.7120, 0.8710,
0.7350

■ 45.9890, -1.4670,
-0.9470

■ 48.6790, -3.5300,
-2.1060

■ 51.9560, -5.8680,
-3.7880

Harmonies

Analogous

The Analogous color harmony consists of three colors that are next to each other on the color wheel.



26.1030, 7.3800, 9.4280



25.2840, 14.1200, 8.4240



24.3890, 18.0180, 3.8580

Triad

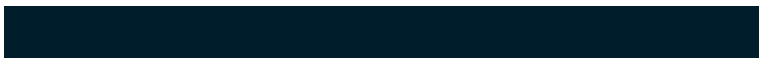
The Triadic color harmony groups three colors that are evenly spaced from another and form a triangle on the color wheel.



25.2840, 14.1200, 8.4240



22.7150, 4.8160, -10.1920



21.9250, -21.7780, -1.7940

Complementary

The Complementary color scheme is a pair of colors which are on the opposite of each other on the color wheel.



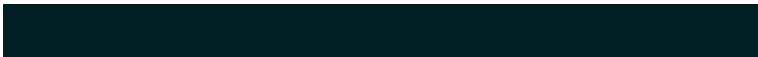
25.2840, 14.1200, 8.4240



34.7160, -14.1200, -8.4240

Split Complementary

Split-complementary colors differ from the complementary color scheme. The scheme consists of three colors, the original color and two neighbors of the complement color.



21.7140, -19.8060, -4.4940



25.2840, 14.1200, 8.4240



20.1030, -10.9560, -10.7000

Square

The Square scheme is like the rectangle color scheme, but the four colors are evenly spaced on the color wheel.



25.2840, 14.1200, 8.4240



24.2430, 12.1970, -6.2910



21.1610, -16.8710, -8.1270



22.8980, -17.1480, 2.4040

Rectangle

The Rectangle color scheme consists of four colors that form a rectangle on the color wheel.



25.2840, 14.1200, 8.4240



24.2270, 18.2940, -1.1460



21.1610, -16.8710, -8.1270



21.8110, -21.4570, -2.1050

Sweetspot

The Sweet Spot groups the original color and five complimentary colors.



25.2840, 14.1200, 8.4240



48.6310, 5.5930, 3.2650



25.1720, 2.9320, 12.9480



23.9080, 3.2550, 1.5830



156.0000, -0.0000, -0.0000



28.0000, -0.0000, 0.0000

Same Dimension

The Same Dimension uses a secret algorithm to generate beautiful new colors.



25.2840, 14.1200, 8.4240



27.3390, 21.4550, 13.1590



27.8940, 15.0380, 2.7980



21.5980, 1.1920, 0.4240



28.8630, 43.8270, 26.2190



70.9400, 107.9630, 64.3390

Inverse Universe

The Inverse Universe completely reimagines the original color for something new.



25.2840, 14.1200, 8.4240



27.3390, 21.4550, 13.1590



32.1060, -15.0380, -2.7980



21.5980, 1.1920, 0.4240



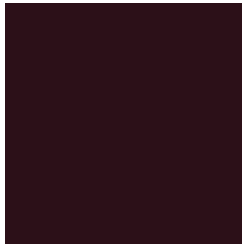
28.8630, 43.8270, 26.2190



70.9400, 107.9630, 64.3390

Previews

White Background



This preview shows how the YIQ color 25.2840, 14.1200, 8.4240 looks on a white background.

Color Contrast Check

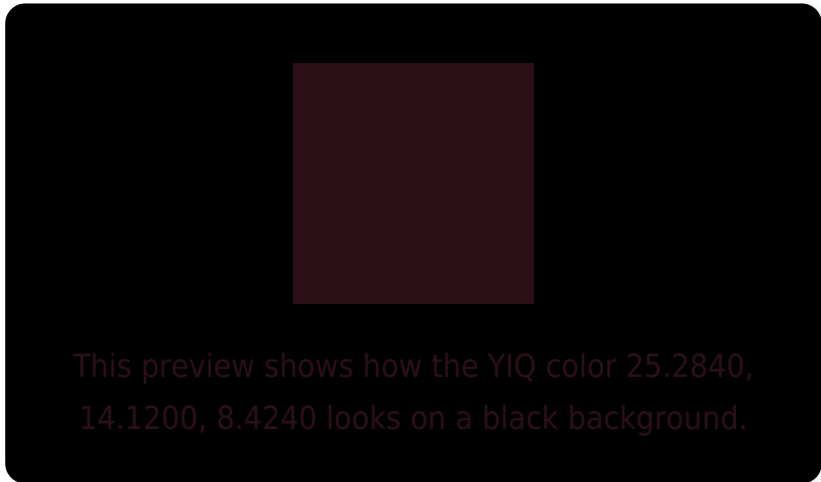
Large Text (above 18pt) WCAG AA ✓ Pass

Any Text WCAG AA ✓ Pass

Large Text (above 18pt) WCAG AAA ✓ Pass

Any Text WCAG AAA ✓ Pass

Black Background



Color Contrast Check

Large Text (above 18pt) WCAG AA × Fail

Any Text WCAG AA × Fail

Large Text (above 18pt) WCAG AAA × Fail

Any Text WCAG AAA × Fail

If you want to check with other color combinations, try the [Color Contrast Checker](#).

YIQ 25.2840, 14.1200, 8.4240

Background



This preview shows how black text looks on a background with the YIQ color 25.2840, 14.1200, 8.4240.



This preview shows how white text looks on a background with the YIQ color 25.2840, 14.1200,

Color Blindness Simulation

Color vision deficiency is a very complex topic, and I could not describe the different causes any better than Wikipedia does, so if you want to learn more, you should check out their [article about color blindness](#).

Dichromacy



Original Color

25.2840, 14.1200, 8.4240

Protanopia

26.4560, -1.2840, 1.2440

Deuteranopia

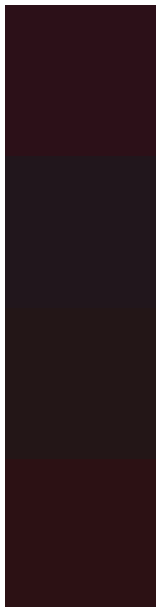
26.2670, 3.6220, 0.4380



Tritanopia

25.1870, 15.7710, 6.0350

Trichromacy



Original Color

25.2840, 14.1200, 8.4240

Protanomaly

25.9730, 4.6300, 4.1980

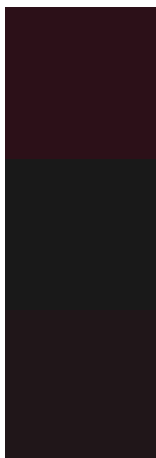
Deuteranomaly

26.0010, 7.4270, 3.0670

Tritanomaly

25.4150, 15.1290, 6.6570

Monochromacy



Original Color

25.2840, 14.1200, 8.4240

Achromatopsia

25.0000, -0.0000, -0.0000

Achromatomaly

25.3320, 4.9970, 3.0530

CSS Examples

Text

The CSS property to change the color of the text to YIQ 25.2840, 14.1200, 8.4240 is called "color". The color property can be set on classes, ids or directly on the HTML element.

This example shows how text in the color `rgb(44, 16, 24)` looks like.

```
.text, #text, p{  
    color:rgb(44, 16, 24)  
}
```

If you want to add a text shadow in that color use the text-shadow property, you can generate a text shadow directly with our [CSS Text Shadow Generator](#).

Here you see how black text with a 4 pixel rgb(44, 16, 24) colored shadow looks like.

```
.shadow{ text-shadow: 4px 4px 2px rgb(44, 16, 24) }
```

Border

The CSS property to change the border of an element to YIQ 25.2840, 14.1200, 8.4240 is called "border". The border property can be set on classes, ids or directly on the HTML element.

This example shows the color as border, it can be applied via the CSS property "border" or "border-color".

```
.border, #border, table{ border:4px solid rgb(44, 16, 24) }
```


If only the border color should be changed use the property border-color.

```
.border{ border-color:rgb(44, 16, 24) }
```

If you want to add a box shadow in that color use:

Here you see how a box with a 4 pixel rgb(44, 16, 24) colored shadow looks like.

```
.boxshadow{ -moz-box-shadow:4px 4px 4px  
4px rgb(44, 16, 24); -webkit-box-  
shadow:4px 4px 4px 4px rgb(44, 16, 24);  
box-shadow:4px 4px 4px 4px rgb(44, 16, 24)  
}
```

Background

The CSS property to change the background color of an element to YIQ 25.2840, 14.1200, 8.4240 is called "background". The background property can be set on classes, ids or directly on the HTML element.

```
.background, #background, body{  
background: rgb(44, 16, 24) }
```

If only the background color should be changed can be used:

```
.background{ background-color: rgb(44, 16,  
24) }
```

This example shows the color as background, it is applied via the CSS property "background".

To optimize and compress your CSS code, you can use our [online CSS compressor and optimizer](#) based on csstidy. If you want to create a linear or radial gradient as background or border, check our [CSS Gradient Generator](#).

Hey! You found this booklet interesting? Support Converting Colors with the new Membership Option!

The pro membership hides all ads, plus gives you double the colors in the color bucket, and more awesome pro features!

[Learn more, Memberships starting at \\$2.50/m!](#)

**Follow me
on Twitter!**

@ConvertingColor