

Converting Colors

YIQ(26.6260, 13.1570, 9.3570)

Have a look what the booklet for
YIQ(26.6260, 13.1570, 9.3570)
contains.

YIQ(26.6260, 13.1570, 9.3570)	3
<i>Conversions</i>	4
<i>Details</i>	6
<i>Harmonies</i>	12
<i>Previews</i>	24
<i>Color Blindness Simulation</i>	28
<i>CSS Examples</i>	31

Color

**YIQ(26.6260, 13.1570,
9.3570)**

Conversions

Conversions Part 1

Format	Color
Hex	2D111C
RGB	45, 17, 28
RGB Percent	18%, 7%, 11%
CMY	0.8235, 0.9334, 0.8902
CMYK	0.00, 0.62, 0.38, 0.82
HSL	336°, 45%, 12%
HSV	336°, 62%, 18%
XYZ	1.4930, 1.0427, 1.2219
YIQ	26.6260, 13.1570, 9.3570

Conversions

Conversions Part 2

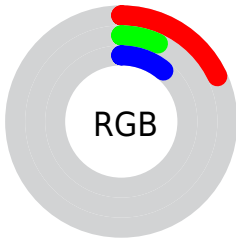
Format	Color
RYB	45, 17, 28
Decimal	2953500
CIELab	9.34, 15.99, -1.08
CIElCh	9, 16.023, 356.125
Yxy	1.0427, 0.3973, 0.2775
Android (android.graphics.Color)	4281143580 (0xFF2D111C)
YUV	26.6260, 0.6774, 16.1140
Hunter-Lab	10.2115, 8.2283, 0.0535

Details

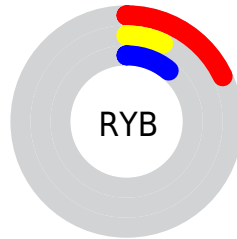
The YIQ color **26.6260, 13.1570, 9.3570** is a dark color, and the websafe version is hex **330000**. A complement of this color would be **35.3740, -13.1570, -9.3570**, and the grayscale version is **27.0000, -0.0000, 0.0000**.

A 20% lighter version of the original color is **70.8220, 15.5410, 10.2050**, and **0.0000, 0.0000, 0.0000** is the 20% darker color. If you saturate the color by 10%, you get **23.3490, 15.4950, 11.0390**, and if you desaturate by 10%, it is **29.3160, 11.0940, 8.1980**.

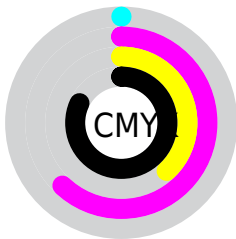
Distribution



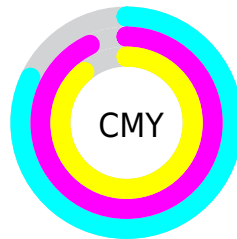
- Red (18%)
- Green (7%)
- Blue (11%)



- Red (18%)
- Yellow (7%)
- Blue (11%)



- Cyan (0%)
- Magenta (62%)
- Yellow (38%)
- Black (82%)



- Cyan (82%)
- Magenta (93%)
- Yellow (89%)

Brightness & Saturation Gradients

These gradients show how the YIQ color 26.6260, 13.1570, 9.3570 changes by changing the brightness by 10 percent. The first figure shows a shift by +10% for each color and the second figure -10%.

Similar to the brightness gradients but the following saturation gradients show a change of the YIQ color 26.6260, 13.1570, 9.3570 by changing the saturation by 10% instead.

■ 26.6260, 13.1570,
9.3570

■ 26.6260, 13.1570,
9.3570

■ 247.9560, 3.3000,
6.2760

■ 7.8880, 15.1750,
5.8230

■ 70.8220, 15.5410,
10.2050

■ 0.0000, 0.0000,
0.0000

■ 94.5340, 16.4120,
10.9400

■ 119.8330, 17.0080,
11.1520

■ 145.4310, 18.2000,
11.5760

■ 171.8440, 18.4750,
12.0990

■ 199.1430, 19.0710,

12.3110

■ 227.4420, 19.6670,
12.5230

■ 26.6260, 13.1570,
9.3570

■ 26.6260, 13.1570,
9.3570

■ 23.3490, 15.4950,
11.0390

■ 29.3160, 11.0940,
8.1980

■ 20.7730, 17.2370,
12.5090

■ 32.4790, 9.0770,
6.2050

■ 17.4960, 19.5750,
14.1910

■ 35.1690, 7.0140,
5.0460

■ 15.5070, 21.0420,
15.1380

■ 38.4460, 4.6760,
3.3640

■ 41.1360, 2.6130,
2.2050

■ 44.2990, 0.5960,
0.2120

■ 47.5760, -1.7420,
-1.4700

■ 50.2660, -3.8050,
-2.6290

■ 53.5430, -6.1430,
-4.3110

Harmonies

Analogous

The Analogous color harmony consists of three colors that are next to each other on the color wheel.



27.4340, 4.9500, 9.4140



26.6260, 13.1570, 9.3570



26.1440, 17.3300, 5.3140

Triad

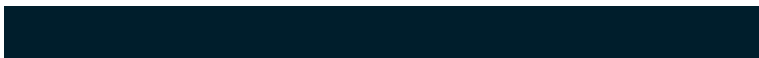
The Triadic color harmony groups three colors that are evenly spaced from another and form a triangle on the color wheel.



26.6260, 13.1570, 9.3570



23.9110, 7.2000, -9.3440



22.6260, -22.3740, -2.0060

Complementary

The Complementary color scheme is a pair of colors which are on the opposite of each other on the color wheel.



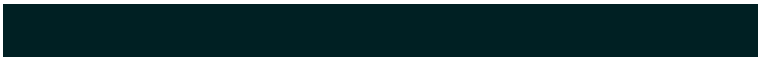
26.6260, 13.1570, 9.3570



35.3740, -13.1570, -9.3570

Split Complementary

Split-complementary colors differ from the complementary color scheme. The scheme consists of three colors, the original color and two neighbors of the complement color.



22.7740, -20.0350, -5.8510



26.6260, 13.1570, 9.3570



22.2560, -7.0130, -10.5730

Square

The Square scheme is like the rectangle color scheme, but the four colors are evenly spaced on the color wheel.



26.6260, 13.1570, 9.3570



25.1400, 13.9850, -5.6550



21.5200, -16.5040, -9.2720



22.5060, -21.9160, 0.7080

Rectangle

The Rectangle color scheme consists of four colors that form a rectangle on the color wheel.



26.6260, 13.1570, 9.3570



25.6940, 18.4770, 1.0450



21.5200, -16.5040, -9.2720



22.8710, -21.6860, -3.4620

Sweetspot

The Sweet Spot groups the original color and five complimentary colors.



26.6260, 13.1570, 9.3570



51.7450, 5.2720, 3.5760



25.2750, 1.1440, 12.3120



26.3210, 3.5300, 2.1060



158.0000, -0.0000, 0.0000



31.0000, -0.0000, -0.0000

Same Dimension

The Same Dimension uses a secret algorithm to generate beautiful new colors.



26.6260, 13.1570, 9.3570



30.0940, 20.7670, 14.6150



27.1330, 15.8630, 4.3670



21.7120, 0.8710, 0.7350



29.8890, 40.9380, 29.0180



73.5620, 100.5800, 71.4920

Inverse Universe

The Inverse Universe completely reimagines the original color for something new.



26.6260, 13.1570, 9.3570



30.0940, 20.7670, 14.6150



34.8670, -15.8630, -4.3670



21.7120, 0.8710, 0.7350



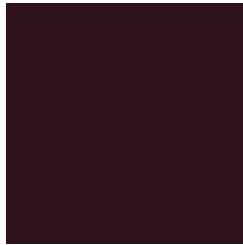
29.8890, 40.9380, 29.0180



73.5620, 100.5800, 71.4920

Previews

White Background



This preview shows how the YIQ color 26.6260, 13.1570, 9.3570 looks on a white background.

Color Contrast Check

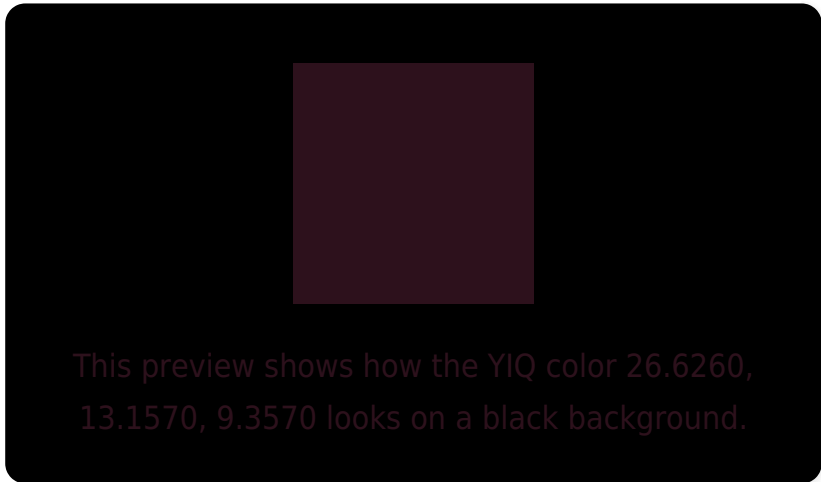
Large Text (above 18pt) WCAG AA ✓ Pass

Any Text WCAG AA ✓ Pass

Large Text (above 18pt) WCAG AAA ✓ Pass

Any Text WCAG AAA ✓ Pass

Black Background



Color Contrast Check

Large Text (above 18pt) WCAG AA × Fail

Any Text WCAG AA × Fail

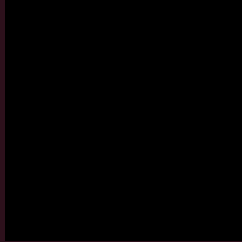
Large Text (above 18pt) WCAG AAA × Fail

Any Text WCAG AAA × Fail

If you want to check with other color combinations, try the [Color Contrast Checker](#).

YIQ 26.6260, 13.1570, 9.3570

Background



This preview shows how black text looks on a background with the YIQ color 26.6260, 13.1570, 9.3570.



This preview shows how white text looks on a background with the YIQ color 26.6260, 13.1570,

Color Blindness Simulation

Color vision deficiency is a very complex topic, and I could not describe the different causes any better than Wikipedia does, so if you want to learn more, you should check out their [article about color blindness](#).

Dichromacy



Original Color

26.6260, 13.1570, 9.3570

Protanopia

27.2000, -3.4390, 1.7530

Deuteranopia

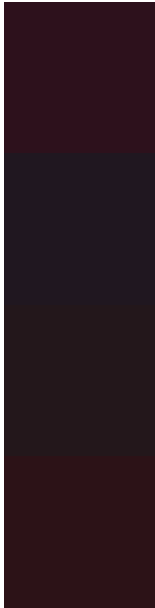
27.3100, 2.0630, 1.1590



Tritanopia

26.5890, 14.5790, 5.6110

Trichromacy



Original Color

26.6260, 13.1570, 9.3570

Protanomaly

26.7170, 2.4750, 4.7070

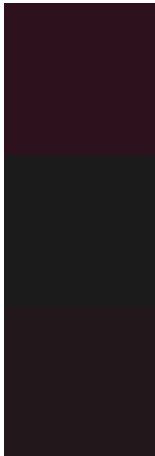
Deuteranomaly

27.0440, 5.8680, 3.7880

Tritanomaly

26.3440, 13.8910, 7.0670

Monochromacy



Original Color

26.6260, 13.1570, 9.3570

Achromatopsia

27.0000, -0.0000, 0.0000

Achromatomaly

26.7450, 5.2720, 3.5760

CSS Examples

Text

The CSS property to change the color of the text to YIQ 26.6260, 13.1570, 9.3570 is called "color". The color property can be set on classes, ids or directly on the HTML element.

This example shows how text in the color `rgb(45, 17, 28)` looks like.

```
.text, #text, p{  
    color:rgb(45, 17, 28)  
}
```

If you want to add a text shadow in that color use the text-shadow property, you can generate a text shadow directly with our [CSS Text Shadow Generator](#).

Here you see how black text with a 4 pixel rgb(45, 17, 28) colored shadow looks like.

```
.shadow{ text-shadow: 4px 4px 2px rgb(45, 17, 28) }
```

Border

The CSS property to change the border of an element to YIQ 26.6260, 13.1570, 9.3570 is called "border". The border property can be set on classes, ids or directly on the HTML element.

This example shows the color as border, it can be applied via the CSS property "border" or "border-color".

```
.border, #border, table{ border:4px solid rgb(45, 17, 28) }
```


If only the border color should be changed use the property border-color.

```
.border{ border-color:rgb(45, 17, 28) }
```

If you want to add a box shadow in that color use:

Here you see how a box with a 4 pixel rgb(45, 17, 28) colored shadow looks like.

```
.boxshadow{ -moz-box-shadow:4px 4px 4px  
4px rgb(45, 17, 28); -webkit-box-  
shadow:4px 4px 4px 4px rgb(45, 17, 28);  
box-shadow:4px 4px 4px 4px rgb(45, 17, 28)  
}
```

Background

The CSS property to change the background color of an element to YIQ 26.6260, 13.1570, 9.3570 is called "background". The background property can be set on classes, ids or directly on the HTML element.

```
.background, #background, body{  
background: rgb(45, 17, 28) }
```

If only the background color should be changed can be used:

```
.background{ background-color: rgb(45, 17,  
28) }
```

This example shows the color as background, it is applied via the CSS property "background".

To optimize and compress your CSS code, you can use our [online CSS compressor and optimizer](#) based on csstidy. If you want to create a linear or radial gradient as background or border, check our [CSS Gradient Generator](#).

Hey! You found this booklet interesting? Support Converting Colors with the new Membership Option!

The pro membership hides all ads, plus gives you double the colors in the color bucket, and more awesome pro features!

[Learn more, Memberships starting at \\$2.50/m!](#)

**Follow me
on Twitter!**

@ConvertingColor