

Converting Colors

YIQ(28.2690, 18.4760, 6.5720)

Have a look what the booklet for
YIQ(28.2690, 18.4760, 6.5720)
contains.

YIQ(28.2690, 18.4760, 6.5720)	3
<i>Conversions</i>	4
<i>Details</i>	6
<i>Harmonies</i>	12
<i>Previews</i>	24
<i>Color Blindness Simulation</i>	28
<i>CSS Examples</i>	31

Color

**YIQ(28.2690, 18.4760,
6.5720)**

Conversions

Conversions Part 1

Format	Color
Hex	321313
RGB	50, 19, 19
RGB Percent	20%, 7%, 7%
CMY	0.8038, 0.9255, 0.9254
CMYK	0.00, 0.62, 0.62, 0.80
HSL	360°, 45%, 14%
HSV	360°, 62%, 20%
XYZ	1.6667, 1.1910, 0.7590
YIQ	28.2690, 18.4760, 6.5720

Conversions

Conversions Part 2

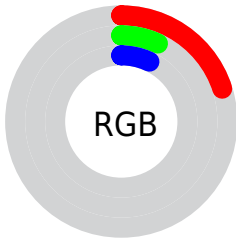
Format	Color
R_{YB}	50, 19, 19
Decimal	3281683
CIE _{Lab}	10.49, 15.72, 7.23
CIE _{LCh}	10, 17.300, 24.709
Yxy	1.1910, 0.4608, 0.3293
Android (android.graphics.Color)	4281471763 (0xFF321313)
YUV	28.2690, -4.5696, 19.0581
Hunter-Lab	10.9132, 8.1627, 3.5158

Details

The YIQ color **28.2690, 18.4760, 6.5720** is a dark color, and the websafe version is hex **330000**. A complement of this color would be **40.7310, -18.4760, -6.5720**, and the grayscale version is **28.0000, -0.0000, 0.0000**.

A 20% lighter version of the original color is **72.6500, 21.7770, 7.3210**, and **0.0000, 0.0000, 0.0000** is the 20% darker color. If you saturate the color by 10%, you get **24.7640, 21.4560, 7.6320**, and if you desaturate by 10%, it is **31.7740, 15.4960, 5.5120**.

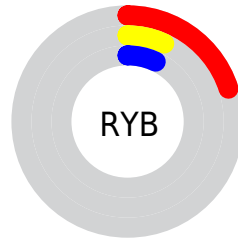
Distribution



 Red (20%)

 Green (7%)

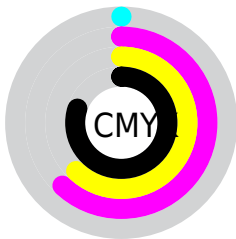
 Blue (7%)



 Red (20%)

 Yellow (7%)

 Blue (7%)

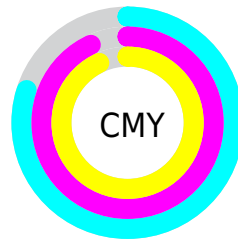


 Cyan (0%)

 Magenta (62%)

 Yellow (62%)

 Black (80%)



 Cyan (80%)

 Magenta (93%)

 Yellow (93%)

Brightness & Saturation Gradients

These gradients show how the YIQ color 28.2690, 18.4760, 6.5720 changes by changing the brightness by 10 percent. The first figure shows a shift by +10% for each color and the second figure -10%.

Similar to the brightness gradients but the following saturation gradients show a change of the YIQ color 28.2690, 18.4760, 6.5720 by changing the saturation by 10% instead.

■ 28.2690, 18.4760,
6.5720

■ 28.2690, 18.4760,
6.5720

■ 248.3490, 6.3270,
0.9750

■ 8.9700, 17.8800,
6.3600

■ 72.6500, 21.7770,
7.3210

■ 0.0000, 0.0000,
0.0000

■ 97.1340, 23.2900,
7.4340

■ 122.1450, 24.7570,
8.3810

■ 148.3300, 25.6740,
8.2820

■ 174.9280, 26.8660,
8.7060

■ 202.2270, 27.4620,

8.9180

■ 228.1340, 23.2900,
7.4340

■ 28.2690, 18.4760,
6.5720

■ 28.2690, 18.4760,
6.5720

■ 24.7640, 21.4560,
7.6320

■ 31.7740, 15.4960,
5.5120

■ 21.2590, 24.4360,
8.6920

■ 35.2790, 12.5160,
4.4520

■ 17.7540, 27.4160,
9.7520

■ 38.7840, 9.5360,
3.3920

■ 14.9500, 29.8000,
10.6000

■ 42.2890, 6.5560,
2.3320

■ 45.7940, 3.5760,
1.2720

■ 49.2990, 0.5960,
0.2120

■ 52.8040, -2.3840,
-0.8480

■ 56.3090, -5.3640,
-1.9080

■ 59.8140, -8.3440,
-2.9680

Harmonies

Analogous

The Analogous color harmony consists of three colors that are next to each other on the color wheel.



28.7510, 14.3030, 10.6150



28.2690, 18.4760, 6.5720



27.7110, 19.8070, -1.0330

Triad

The Triadic color harmony groups three colors that are evenly spaced from another and form a triangle on the color wheel.



28.2690, 18.4760, 6.5720



24.1420, -6.6920, -10.8840



23.5380, -24.9420, 0.4820

Complementary

The Complementary color scheme is a pair of colors which are on the opposite of each other on the color wheel.



28.2690, 18.4760, 6.5720



40.7310, -18.4760, -6.5720

Split Complementary

Split-complementary colors differ from the complementary color scheme. The scheme consists of three colors, the original color and two neighbors of the complement color.



24.7290, -24.1620, -2.6420



28.2690, 18.4760, 6.5720



22.9220, -17.6960, -9.6960

Square

The Square scheme is like the rectangle color scheme, but the four colors are evenly spaced on the color wheel.



28.2690, 18.4760, 6.5720



26.2700, 7.5670, -10.4890



24.2900, -21.5480, -5.9640



28.7360, -7.7040, 7.4640

Rectangle

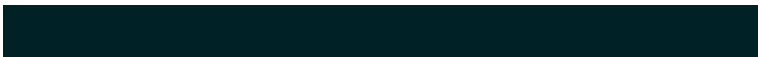
The Rectangle color scheme consists of four colors that form a rectangle on the color wheel.



28.2690, 18.4760, 6.5720



27.5210, 17.2860, -4.9060



24.2900, -21.5480, -5.9640



24.0110, -24.8960, -0.3520

Sweetspot

The Sweet Spot groups the original color and five complimentary colors.



28.2690, 18.4760, 6.5720



55.5880, 7.1520, 2.5440



31.8030, 8.5250, 16.2130



28.0930, 4.1720, 1.4840



161.0000, -0.0000, -0.0000



33.0000, -0.0000, -0.0000

Same Dimension

The Same Dimension uses a secret algorithm to generate beautiful new colors.



28.2690, 18.4760, 6.5720



31.0530, 28.0120, 9.9640



37.0740, 14.3510, -1.2730



23.8970, 1.7880, 0.6360



26.6110, 53.0440, 18.8680



64.8830, 129.3320, 46.0040

Inverse Universe

The Inverse Universe completely reimagines the original color for something new.



28.2690, 18.4760, 6.5720



31.0530, 28.0120, 9.9640



31.9260, -14.3510, 1.2730



23.8970, 1.7880, 0.6360



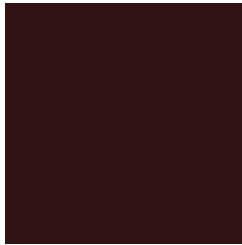
26.6110, 53.0440, 18.8680



64.8830, 129.3320, 46.0040

Previews

White Background



This preview shows how the YIQ color 28.2690, 18.4760, 6.5720 looks on a white background.

Color Contrast Check

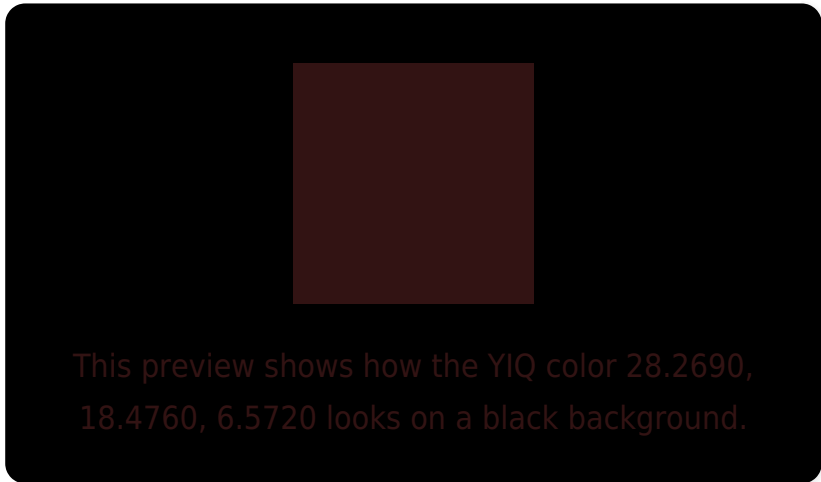
Large Text (above 18pt) WCAG AA ✓ Pass

Any Text WCAG AA ✓ Pass

Large Text (above 18pt) WCAG AAA ✓ Pass

Any Text WCAG AAA ✓ Pass

Black Background



Color Contrast Check

Large Text (above 18pt) WCAG AA × Fail

Any Text WCAG AA × Fail

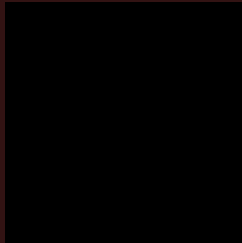
Large Text (above 18pt) WCAG AAA × Fail

Any Text WCAG AAA × Fail

If you want to check with other color combinations, try the [Color Contrast Checker](#).

YIQ 28.2690, 18.4760, 6.5720

Background



This preview shows how black text looks on a background with the YIQ color 28.2690, 18.4760, 6.5720.



This preview shows how white text looks on a background with the YIQ color 28.2690, 18.4760,

Color Blindness Simulation

Color vision deficiency is a very complex topic, and I could not describe the different causes any better than Wikipedia does, so if you want to learn more, you should check out their [article about color blindness](#).

Dichromacy



Original Color

28.2690, 18.4760, 6.5720

Protanopia

28.9140, 3.1180, -1.4420

Deuteranopia

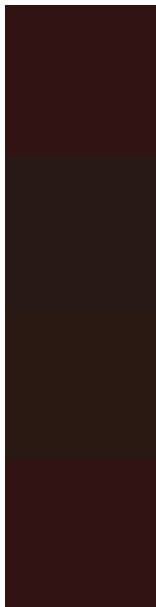
29.1380, 8.2990, -1.7250



Tritanopia

28.3830, 18.1550, 6.8830

Trichromacy



Original Color

28.2690, 18.4760, 6.5720

Protanomaly

28.5450, 8.7110, 1.8230

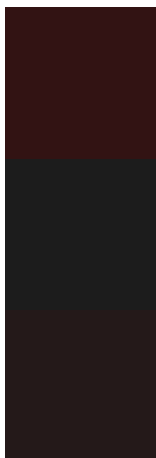
Deuteranomaly

28.9860, 11.7830, 1.2150

Tritanomaly

28.3830, 18.1550, 6.8830

Monochromacy



Original Color

28.2690, 18.4760, 6.5720

Achromatopsia

28.0000, -0.0000, 0.0000

Achromatomaly

28.2890, 6.5560, 2.3320

CSS Examples

Text

The CSS property to change the color of the text to YIQ 28.2690, 18.4760, 6.5720 is called "color". The color property can be set on classes, ids or directly on the HTML element.

This example shows how text in the color `rgb(50, 19, 19)` looks like.

```
.text, #text, p{  
    color:rgb(50, 19, 19)  
}
```

If you want to add a text shadow in that color use the text-shadow property, you can generate a text shadow directly with our [CSS Text Shadow Generator](#).

Here you see how black text with a 4 pixel rgb(50, 19, 19) colored shadow looks like.

```
.shadow{ text-shadow: 4px 4px 2px rgb(50, 19, 19) }
```

Border

The CSS property to change the border of an element to YIQ 28.2690, 18.4760, 6.5720 is called "border". The border property can be set on classes, ids or directly on the HTML element.

This example shows the color as border, it can be applied via the CSS property "border" or "border-color".

```
.border, #border, table{ border:4px solid rgb(50, 19, 19) }
```


If only the border color should be changed use the property `border-color`.

```
.border{ border-color:rgb(50, 19, 19) }
```

If you want to add a box shadow in that color use:

Here you see how a box with a 4 pixel `rgb(50, 19, 19)` colored shadow looks like.

```
.boxshadow{ -moz-box-shadow:4px 4px 4px  
4px rgb(50, 19, 19); -webkit-box-  
shadow:4px 4px 4px 4px rgb(50, 19, 19);  
box-shadow:4px 4px 4px 4px rgb(50, 19, 19)  
}
```

Background

The CSS property to change the background color of an element to YIQ 28.2690, 18.4760, 6.5720 is called "background". The background property can be set on classes, ids or directly on the HTML element.

```
.background, #background, body{  
background: rgb(50, 19, 19) }
```

If only the background color should be changed can be used:

```
.background{ background-color: rgb(50, 19,  
19) }
```

This example shows the color as background, it is applied via the CSS property "background".

To optimize and compress your CSS code, you can use our [online CSS compressor and optimizer](#) based on csstidy. If you want to create a linear or radial gradient as background or border, check our [CSS Gradient Generator](#).

Hey! You found this booklet interesting? Support Converting Colors with the new Membership Option!

The pro membership hides all ads, plus gives you double the colors in the color bucket, and more awesome pro features!

[Learn more, Memberships starting at \\$2.50/m!](#)

**Follow me
on Twitter!**

@ConvertingColor