

Converting Colors

YIQ(30.1560, 17.0560, -0.7360)

Have a look what the booklet for
YIQ(30.1560, 17.0560, -0.7360)
contains.

YIQ(30.1560, 17.0560, -0.7360)	3
<i>Conversions</i>	4
<i>Details</i>	6
<i>Harmonies</i>	12
<i>Previews</i>	24
<i>Color Blindness Simulation</i>	28
<i>CSS Examples</i>	31

Color

**YIQ(30.1560, 17.0560,
-0.7360)**

Conversions

Conversions Part 1

Format	Color
Hex	2E1A0A
RGB	46, 26, 10
RGB Percent	18%, 10%, 4%
CMY	0.8196, 0.8981, 0.9607
CMYK	0.00, 0.44, 0.78, 0.82
HSL	27°, 64%, 11%
HSV	27°, 78%, 18%
XYZ	1.5513, 1.3414, 0.4649
YIQ	30.1560, 17.0560, -0.7360

Conversions

Conversions Part 2

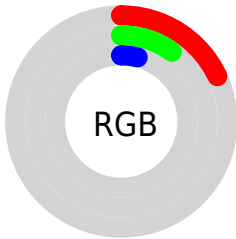
Format	Color
RYB	46, 39, 10
Decimal	3021322
CIELab	11.56, 8.03, 13.29
CIELCh	12, 15.521, 58.863
Yxy	1.3414, 0.4620, 0.3995
Android (android.graphics.Color)	4281211402 (0xFF2E1A0A)
YUV	30.1560, -9.9369, 13.8952
Hunter-Lab	11.5821, 3.6390, 5.7275

Details

The YIQ color **30.1560, 17.0560, -0.7360** is a dark color, and the websafe version is hex **330000**. A complement of this color would be **25.8440, -17.0560, 0.7360**, and the grayscale version is **30.0000, -0.0000, -0.0000**.

A 20% lighter version of the original color is **74.4660, 19.1190, 0.4230**, and **0.0000, 0.0000, 0.0000** is the 20% darker color. If you saturate the color by 10%, you get **27.8250, 19.4860, -0.7220**, and if you desaturate by 10%, it is **32.4870, 14.6260, -0.7500**.

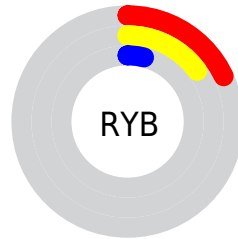
Distribution



Red (18%)

Green (10%)

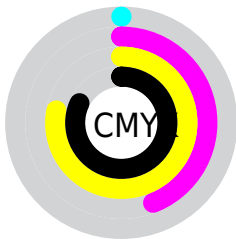
Blue (4%)



Red (18%)

Yellow (15%)

Blue (4%)

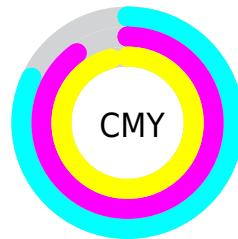


Cyan (0%)

Magenta (44%)

Yellow (78%)

Black (82%)



Cyan (82%)

Magenta (90%)

Yellow (96%)

Brightness & Saturation Gradients

These gradients show how the YIQ color 30.1560, 17.0560, -0.7360 changes by changing the brightness by 10 percent. The first figure shows a shift by +10% for each color and the second figure -10%.

Similar to the brightness gradients but the following saturation gradients show a change of the YIQ color 30.1560, 17.0560, -0.7360 by changing the saturation by 10% instead.

■ 30.1560, 17.0560,
-0.7360

■ 30.1560, 17.0560,
-0.7360

■ 251.4320, 7.2910,
-5.4850

■ 7.1760, 14.3040,
5.0880

■ 74.4660, 19.1190,
0.4230

■ 0.0000, 0.0000,
0.0000

■ 98.9500, 20.6320,
0.5360

■ 123.5480, 21.8240,
0.9600

■ 149.7330, 22.7410,
0.8610

■ 176.6190, 23.0620,
0.5500

■ 204.1030, 24.5750,

0.6630

■ 231.8040, 23.9790,
0.4510

■ 30.1560, 17.0560,
-0.7360

■ 30.1560, 17.0560,
-0.7360

■ 27.8250, 19.4860,
-0.7220

■ 32.4870, 14.6260,
-0.7500

■ 26.1950, 21.3200,
-0.9200

■ 34.1170, 12.7920,
-0.5520

■ 25.4940, 21.9160,
-0.7080

■ 36.4480, 10.3620,
-0.5660

■ 38.0780, 8.5280,
-0.3680

■ 40.4090, 6.0980,
-0.3820

■ 42.1530, 3.9430,
0.1270

■ 44.3700, 1.8340,
-0.1980

■ 46.1140, -0.3210,
0.3110

■ 48.3310, -2.4300,
-0.0140

Harmonies

Analogous

The Analogous color harmony consists of three colors that are next to each other on the color wheel.



30.8450, 16.7340, 5.1020



30.1560, 17.0560, -0.7360



29.4280, 13.1140, -6.3900

Triad

The Triadic color harmony groups three colors that are evenly spaced from another and form a triangle on the color wheel.



30.1560, 17.0560, -0.7360



24.5520, -19.5300, -9.4980



31.2910, -4.9530, 7.1670

Complementary

The Complementary color scheme is a pair of colors which are on the opposite of each other on the color wheel.



30.1560, 17.0560, -0.7360



25.8440, -17.0560, 0.7360

Split Complementary

Split-complementary colors differ from the complementary color scheme. The scheme consists of three colors, the original color and two neighbors of the complement color.



28.0010, -18.9360, 1.7680



30.1560, 17.0560, -0.7360



25.8060, -23.0610, -6.0770

Square

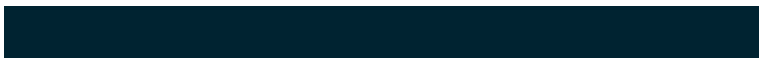
The Square scheme is like the rectangle color scheme, but the four colors are evenly spaced on the color wheel.



30.1560, 17.0560, -0.7360



26.5980, -7.9760, -9.6400



26.1310, -25.3540, -3.0660



31.7330, 5.5460, 9.6260

Rectangle

The Rectangle color scheme consists of four colors that form a rectangle on the color wheel.



30.1560, 17.0560, -0.7360



28.7370, 7.7500, -8.2980



26.1310, -25.3540, -3.0660



30.3120, -9.4460, 5.9940

Sweetspot

The Sweet Spot groups the original color and five complimentary colors.



30.1560, 17.0560, -0.7360



52.7080, 6.6940, -0.1700



23.0440, 15.0360, 13.8520



27.0390, 4.2640, -0.1840



158.0000, -0.0000, 0.0000



31.0000, -0.0000, -0.0000

Same Dimension

The Same Dimension uses a secret algorithm to generate beautiful new colors.



30.1560, 17.0560, -0.7360



34.5330, 26.1800, -0.8920



40.7220, 12.1060, -10.1500



22.1850, 0.9170, -0.0990



48.3190, 41.4020, -1.4300



119.7510, 101.4190, -4.3170

Inverse Universe

The Inverse Universe completely reimagines the original color for something new.



25.8440, -17.0560, 0.7360



27.8800, -25.9050, 1.4150



15.2780, -12.1060, 10.1500



21.8150, -0.9170, 0.0990



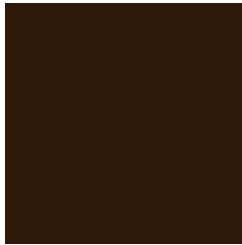
38.0940, -41.1270, 1.9530



94.2490, -101.4190, 4.3170

Previews

White Background



This preview shows how the YIQ color 30.1560, 17.0560, -0.7360 looks on a white background.

Color Contrast Check

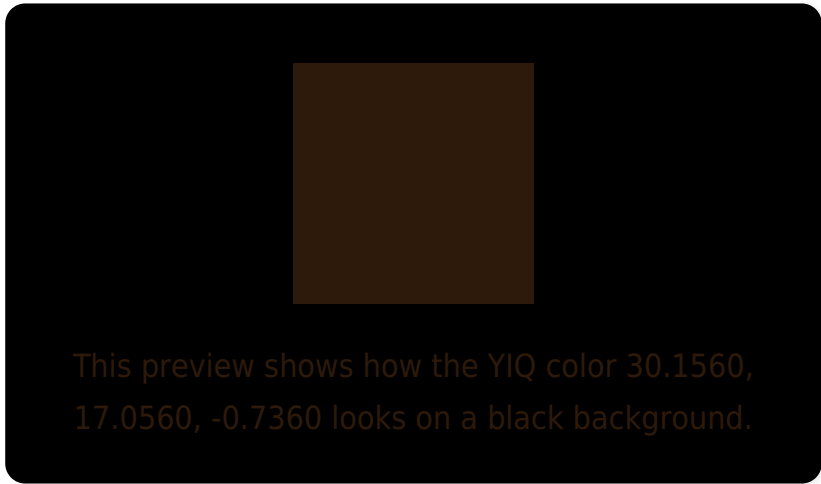
Large Text (above 18pt) WCAG AA ✓ Pass

Any Text WCAG AA ✓ Pass

Large Text (above 18pt) WCAG AAA ✓ Pass

Any Text WCAG AAA ✓ Pass

Black Background



Color Contrast Check

Large Text (above 18pt) WCAG AA × Fail

Any Text WCAG AA × Fail

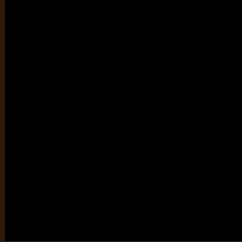
Large Text (above 18pt) WCAG AAA × Fail

Any Text WCAG AAA × Fail

If you want to check with other color combinations, try the [Color Contrast Checker](#).

YIQ 30.1560, 17.0560, -0.7360

Background



This preview shows how black text looks on a background with the YIQ color 30.1560, 17.0560, -0.7360.



This preview shows how white text looks on a background with the YIQ color 30.1560, 17.0560,

-0.7360.

Color Blindness Simulation

Color vision deficiency is a very complex topic, and I could not describe the different causes any better than Wikipedia does, so if you want to learn more, you should check out their [article about color blindness](#).

Dichromacy



Original Color

30.1560, 17.0560, -0.7360

Protanopia

29.9160, 8.8040, -5.3720

Deuteranopia

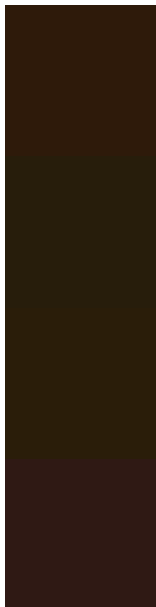
30.2970, 12.1050, -4.6230



Tritanopia

31.1050, 13.0660, 5.4980

Trichromacy



Original Color

30.1560, 17.0560, -0.7360

Protanomaly

29.9380, 11.7380, -3.4780

Deuteranomaly

30.6070, 14.1680, -3.4640

Tritanomaly

31.0080, 14.7170, 3.1090

Monochromacy



Original Color

30.1560, 17.0560, -0.7360

Achromatopsia

30.0000, -0.0000, -0.0000

Achromatomaly

30.4090, 6.0980, -0.3820

CSS Examples

Text

The CSS property to change the color of the text to YIQ 30.1560, 17.0560, -0.7360 is called "color". The color property can be set on classes, ids or directly on the HTML element.

This example shows how text in the color `rgb(46, 26, 10)` looks like.

```
.text, #text, p{  
    color:rgb(46, 26, 10)  
}
```

If you want to add a text shadow in that color use the text-shadow property, you can generate a text shadow directly with our [CSS Text Shadow Generator](#).

Here you see how black text with a 4 pixel rgb(46, 26, 10) colored shadow looks like.

```
.shadow{ text-shadow: 4px 4px 2px rgb(46, 26, 10) }
```

Border

The CSS property to change the border of an element to YIQ 30.1560, 17.0560, -0.7360 is called "border". The border property can be set on classes, ids or directly on the HTML element.

This example shows the color as border, it can be applied via the CSS property "border" or "border-color".

```
.border, #border, table{ border:4px solid rgb(46, 26, 10) }
```


If only the border color should be changed use the property `border-color`.

```
.border{ border-color:rgb(46, 26, 10) }
```

If you want to add a box shadow in that color use:

Here you see how a box with a 4 pixel `rgb(46, 26, 10)` colored shadow looks like.

```
.boxshadow{ -moz-box-shadow:4px 4px 4px  
4px rgb(46, 26, 10); -webkit-box-  
shadow:4px 4px 4px 4px rgb(46, 26, 10);  
box-shadow:4px 4px 4px 4px rgb(46, 26, 10)  
}
```

Background

The CSS property to change the background color of an element to YIQ 30.1560, 17.0560, -0.7360 is called "background". The background property can be set on classes, ids or directly on the HTML element.

```
.background, #background, body{  
background: rgb(46, 26, 10) }
```

If only the background color should be changed can be used:

```
.background{ background-color: rgb(46, 26,  
10) }
```

This example shows the color as background, it is applied via the CSS property "background".

To optimize and compress your CSS code, you can use our [online CSS compressor and optimizer](#) based on csstidy. If you want to create a linear or radial gradient as background or border, check our [CSS Gradient Generator](#).

Hey! You found this booklet interesting? Support Converting Colors with the new Membership Option!

The pro membership hides all ads, plus gives you double the colors in the color bucket, and more awesome pro features!

[Learn more, Memberships starting at \\$2.50/m!](#)

**Follow me
on Twitter!**

@ConvertingColor