

Converting Colors

YIQ(32.0300, 17.6510, 5.0030)

Have a look what the booklet for
YIQ(32.0300, 17.6510, 5.0030)
contains.

YIQ(32.0300, 17.6510, 5.0030)	3
<i>Conversions</i>	4
<i>Details</i>	6
<i>Harmonies</i>	12
<i>Previews</i>	24
<i>Color Blindness Simulation</i>	28
<i>CSS Examples</i>	31

Color

**YIQ(32.0300, 17.6510,
5.0030)**

Conversions

Conversions Part 1

Format	Color
Hex	341815
RGB	52, 24, 21
RGB Percent	20%, 9%, 8%
CMY	0.7960, 0.9059, 0.9176
CMYK	0.00, 0.54, 0.60, 0.80
HSL	6°, 42%, 14%
HSV	6°, 60%, 20%
XYZ	1.8789, 1.4375, 0.8888
YIQ	32.0300, 17.6510, 5.0030

Conversions

Conversions Part 2

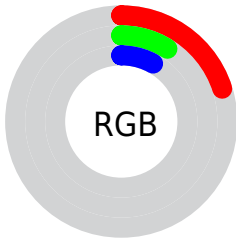
Format	Color
R_YB	52, 24, 21
Decimal	3414037
CIE Lab	12.21, 13.62, 8.33
CIE LCh	12, 15.967, 31.448
Yxy	1.4375, 0.4468, 0.3418
Android (android.graphics.Color)	4281604117 (0xFF341815)
YUV	32.0300, -5.4378, 17.5137
Hunter-Lab	11.9896, 6.9919, 3.9975

Details

The YIQ color **32.0300, 17.6510, 5.0030** is a dark color, and the websafe version is hex **330000**. A complement of this color would be **40.9700, -17.6510, -5.0030**, and the grayscale version is **32.0000, -0.0000, -0.0000**.

A 20% lighter version of the original color is **76.9980, 20.6770, 5.2290**, and **0.0000, 0.0000, 0.0000** is the 20% darker color. If you saturate the color by 10%, you get **28.5250, 20.6310, 6.0630**, and if you desaturate by 10%, it is **35.5350, 14.6710, 3.9430**.

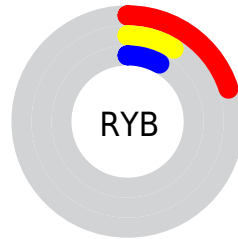
Distribution



Red (20%)

Green (9%)

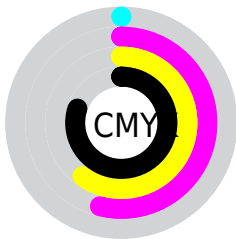
Blue (8%)



Red (20%)

Yellow (9%)

Blue (8%)

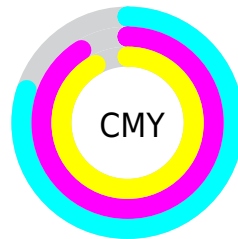


Cyan (0%)

Magenta (54%)

Yellow (60%)

Black (80%)



Cyan (80%)

Magenta (91%)

Yellow (92%)

Brightness & Saturation Gradients

These gradients show how the YIQ color 32.0300, 17.6510, 5.0030 changes by changing the brightness by 10 percent. The first figure shows a shift by +10% for each color and the second figure -10%.

Similar to the brightness gradients but the following saturation gradients show a change of the YIQ color 32.0300, 17.6510, 5.0030 by changing the saturation by 10% instead.

■ 32.0300, 17.6510,
5.0030

■ 32.0300, 17.6510,
5.0030

■ 252.2130, 3.7140,
-1.2300

■ 9.5680, 19.0720,
6.7840

■ 76.9980, 20.6770,
5.2290

■ 0.0000, 0.0000,
0.0000

■ 100.8950, 22.4650,
5.8650

■ 126.1940, 23.0610,
6.0770

■ 152.6780, 24.5740,
6.1900

■ 179.2760, 25.7660,
6.6140

■ 206.5750, 26.3620,

6.8260

■ 231.8840, 20.9980,
4.9180

■ 32.0300, 17.6510,
5.0030

■ 32.0300, 17.6510,
5.0030

■ 28.5250, 20.6310,
6.0630

■ 35.5350, 14.6710,
3.9430

■ 25.6070, 23.3360,
6.6000

■ 38.4530, 11.9660,
3.4060

■ 21.9880, 26.6370,
7.3490

■ 42.0720, 8.6650,
2.6570

■ 18.4830, 29.6170,
8.4090

■ 45.5770, 5.6850,
1.5970

■ 49.0820, 2.7050,
0.5370

■ 52.0000, -0.0000,
-0.0000

■ 55.5050, -2.9800,
-1.0600

■ 59.1240, -6.2810,
-1.8090

■ 62.0420, -8.9860,
-2.3460

Harmonies

Analogous

The Analogous color harmony consists of three colors that are next to each other on the color wheel.



32.6970, 14.3950, 8.9470



32.0300, 17.6510, 5.0030



31.0420, 17.3770, -1.0470

Triad

The Triadic color harmony groups three colors that are evenly spaced from another and form a triangle on the color wheel.



32.0300, 17.6510, 5.0030



28.0000, -9.1680, -10.0640



29.7130, -18.0650, 2.5030

Complementary

The Complementary color scheme is a pair of colors which are on the opposite of each other on the color wheel.



32.0300, 17.6510, 5.0030



40.9700, -17.6510, -5.0030

Split Complementary

Split-complementary colors differ from the complementary color scheme. The scheme consists of three colors, the original color and two neighbors of the complement color.



26.9460, -26.2710, -2.9670



32.0300, 17.6510, 5.0030



25.9540, -20.7220, -9.9220

Square

The Square scheme is like the rectangle color scheme, but the four colors are evenly spaced on the color wheel.



32.0300, 17.6510, 5.0030



29.7580, 3.2570, -9.4710



26.6210, -23.9780, -5.9780



32.7040, -4.6780, 7.6900

Rectangle

The Rectangle color scheme consists of four colors that form a rectangle on the color wheel.



32.0300, 17.6510, 5.0030



30.8520, 14.8560, -4.9200



26.6210, -23.9780, -5.9780



27.6090, -23.7040, 0.0720

Sweetspot

The Sweet Spot groups the original color and five complimentary colors.



32.0300, 17.6510, 5.0030



61.0610, 7.1980, 1.7100



33.4610, 9.4880, 15.2800



30.9790, 4.4930, 1.1730



163.0000, -0.0000, -0.0000



36.0000, -0.0000, 0.0000

Same Dimension

The Same Dimension uses a secret algorithm to generate beautiful new colors.



32.0300, 17.6510, 5.0030



36.8850, 28.4250, 7.9850



40.8350, 13.5260, -2.8420



23.8970, 1.7880, 0.6360



31.8940, 50.5690, 14.1610



77.2100, 123.5570, 35.0210

Inverse Universe

The Inverse Universe completely reimagines the original color for something new.



40.9700, -17.6510, -5.0030



51.1150, -28.4250, -7.9850



32.1650, -13.5260, 2.8420



24.5160, -1.5130, -0.1130



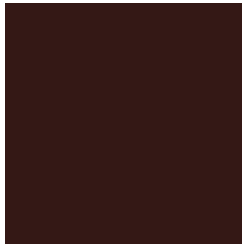
57.6930, -50.8440, -14.6840



139.7900, -123.5570, -35.0210

Previews

White Background



This preview shows how the YIQ color 32.0300, 17.6510, 5.0030 looks on a white background.

Color Contrast Check

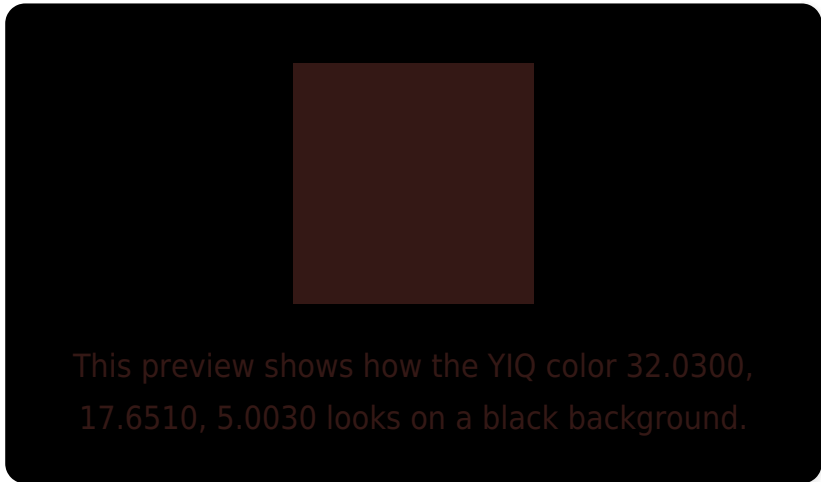
Large Text (above 18pt) WCAG AA ✓ Pass

Any Text WCAG AA ✓ Pass

Large Text (above 18pt) WCAG AAA ✓ Pass

Any Text WCAG AAA ✓ Pass

Black Background



Color Contrast Check

Large Text (above 18pt) WCAG AA × Fail

Any Text WCAG AA × Fail

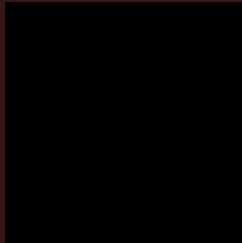
Large Text (above 18pt) WCAG AAA × Fail

Any Text WCAG AAA × Fail

If you want to check with other color combinations, try the [Color Contrast Checker](#).

YIQ 32.0300, 17.6510, 5.0030

Background



This preview shows how black text looks on a background with the YIQ color 32.0300, 17.6510, 5.0030.



This preview shows how white text looks on a background with the YIQ color 32.0300, 17.6510,

Color Blindness Simulation

Color vision deficiency is a very complex topic, and I could not describe the different causes any better than Wikipedia does, so if you want to learn more, you should check out their [article about color blindness](#).

Dichromacy



Original Color

32.0300, 17.6510, 5.0030

Protanopia

32.6860, 3.7600, -2.0640

Deuteranopia

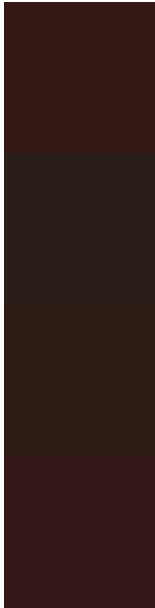
32.4370, 8.8950, -1.5130



Tritanopia

31.8990, 16.6420, 6.7700

Trichromacy



Original Color

32.0300, 17.6510, 5.0030

Protanomaly

32.6050, 8.4820, 0.4660

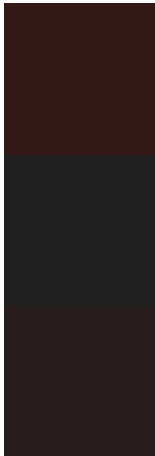
Deuteranomaly

31.8720, 12.1040, 0.9040

Tritanomaly

31.7850, 16.9630, 6.4590

Monochromacy



Original Color

32.0300, 17.6510, 5.0030

Achromatopsia

32.0000, -0.0000, -0.0000

Achromatomaly

31.8760, 6.2810, 1.8090

CSS Examples

Text

The CSS property to change the color of the text to YIQ 32.0300, 17.6510, 5.0030 is called "color". The color property can be set on classes, ids or directly on the HTML element.

This example shows how text in the color `rgb(52, 24, 21)` looks like.

```
.text, #text, p{  
    color:rgb(52, 24, 21)  
}
```

If you want to add a text shadow in that color use the text-shadow property, you can generate a text shadow directly with our [CSS Text Shadow Generator](#).

Here you see how black text with a 4 pixel rgb(52, 24, 21) colored shadow looks like.

```
.shadow{ text-shadow: 4px 4px 2px rgb(52, 24, 21) }
```

Border

The CSS property to change the border of an element to YIQ 32.0300, 17.6510, 5.0030 is called "border". The border property can be set on classes, ids or directly on the HTML element.

This example shows the color as border, it can be applied via the CSS property "border" or "border-color".

```
.border, #border, table{ border:4px solid rgb(52, 24, 21) }
```


If only the border color should be changed use the property `border-color`.

```
.border{ border-color:rgb(52, 24, 21) }
```

If you want to add a box shadow in that color use:

Here you see how a box with a 4 pixel `rgb(52, 24, 21)` colored shadow looks like.

```
.boxshadow{ -moz-box-shadow:4px 4px 4px  
4px rgb(52, 24, 21); -webkit-box-  
shadow:4px 4px 4px 4px rgb(52, 24, 21);  
box-shadow:4px 4px 4px 4px rgb(52, 24, 21)  
}
```

Background

The CSS property to change the background color of an element to YIQ 32.0300, 17.6510, 5.0030 is called "background". The background property can be set on classes, ids or directly on the HTML element.

```
.background, #background, body{  
background: rgb(52, 24, 21) }
```

If only the background color should be changed can be used:

```
.background{ background-color: rgb(52, 24,  
21) }
```

This example shows the color as background, it is applied via the CSS property "background".

To optimize and compress your CSS code, you can use our [online CSS compressor and optimizer](#) based on csstidy. If you want to create a linear or radial gradient as background or border, check our [CSS Gradient Generator](#).

Hey! You found this booklet interesting? Support Converting Colors with the new Membership Option!

The pro membership hides all ads, plus gives you double the colors in the color bucket, and more awesome pro features!

[Learn more, Memberships starting at \\$2.50/m!](#)

**Follow me
on Twitter!**

@ConvertingColor