

Converting Colors

YIQ(35.0950, 9.8580, -2.4460)

Have a look what the booklet for
YIQ(35.0950, 9.8580, -2.4460)
contains.

YIQ(35.0950, 9.8580, -2.4460)	3
<i>Conversions</i>	4
<i>Details</i>	6
<i>Harmonies</i>	12
<i>Previews</i>	24
<i>Color Blindness Simulation</i>	28
<i>CSS Examples</i>	31

Color

**YIQ(35.0950, 9.8580,
-2.4460)**

Conversions

Conversions Part 1

Format	Color
Hex	2B2214
RGB	43, 34, 20
RGB Percent	17%, 13%, 8%
CMY	0.8314, 0.8667, 0.9215
CMYK	0.00, 0.21, 0.53, 0.83
HSL	36°, 36%, 12%
HSV	36°, 53%, 17%
XYZ	1.6947, 1.7080, 0.9028
YIQ	35.0950, 9.8580, -2.4460

Conversions

Conversions Part 2

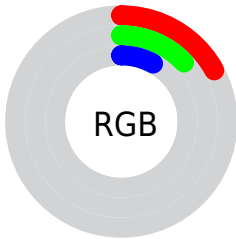
Format	Color
RYB	35, 43, 20
Decimal	2826772
CIELab	13.87, 1.86, 11.01
CIELCh	14, 11.163, 80.426
Yxy	1.7080, 0.3936, 0.3967
Android (android.graphics.Color)	4281016852 (0xFF2B2214)
YUV	35.0950, -7.4418, 6.9327
Hunter-Lab	13.0692, 0.2750, 5.0529

Details

The YIQ color **35.0950, 9.8580, -2.4460** is a dark color, and the websafe version is hex **333333**. A complement of this color would be **27.9050, -9.8580, 2.4460**, and the grayscale version is **35.0000, 0.0000, 0.0000**.

A 20% lighter version of the original color is **79.4650, 11.6920, -2.6440**, and **0.0000, 0.0000, 0.0000** is the 20% darker color. If you saturate the color by 10%, you get **33.4650, 11.6920, -2.6440**, and if you desaturate by 10%, it is **36.7250, 8.0240, -2.2480**.

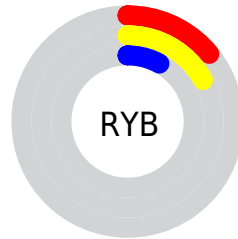
Distribution



Red (17%)

Green (13%)

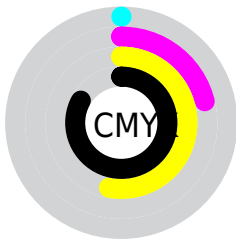
Blue (8%)



Red (14%)

Yellow (17%)

Blue (8%)

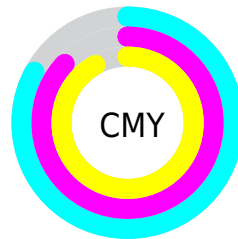


Cyan (0%)

Magenta (21%)

Yellow (53%)

Black (83%)



Cyan (83%)

Magenta (87%)

Yellow (92%)

Brightness & Saturation Gradients

These gradients show how the YIQ color 35.0950, 9.8580, -2.4460 changes by changing the brightness by 10 percent. The first figure shows a shift by +10% for each color and the second figure -10%.

Similar to the brightness gradients but the following saturation gradients show a change of the YIQ color 35.0950, 9.8580, -2.4460 by changing the saturation by 10% instead.

■ 35.0950, 9.8580,
-2.4460

■ 35.0950, 9.8580,
-2.4460

■ 253.8600, 3.2100,
-3.1100

■ 13.6220, 9.8120,
-1.6120

■ 79.4650, 11.6920,
-2.6440

■ 0.0000, 0.0000,
0.0000

■ 103.7640, 12.2880,
-2.4320

■ 128.9490, 13.2050,
-2.5310

■ 154.8350, 13.5260,
-2.8420

■ 181.8350, 13.5260,
-2.8420

■ 209.1340, 14.1220,

-2.6300

■ 237.3190, 15.0390,
-2.7290

■ 35.0950, 9.8580,
-2.4460

■ 35.0950, 9.8580,
-2.4460

■ 33.4650, 11.6920,
-2.6440

■ 36.7250, 8.0240,
-2.2480

■ 32.3080, 13.5720,
-3.6760

■ 37.8820, 6.1440,
-1.2160

■ 30.6780, 15.4060,
-3.8740

■ 39.5120, 4.3100,
-1.0180

■ 29.0480, 17.2400,
-4.0720

■ 41.1420, 2.4760,
-0.8200

■ 28.1190, 18.4780,
-4.4820

■ 42.2990, 0.5960,
0.2120

■ 43.9290, -1.2380,
0.4100

■ 45.5590, -3.0720,
0.6080

■ 46.6020, -4.6310,
1.3290

■ 48.3460, -6.7860,
1.8380

Harmonies

Analogous

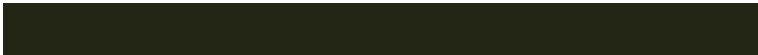
The Analogous color harmony consists of three colors that are next to each other on the color wheel.



35.5840, 12.9750, 1.6390



35.0950, 9.8580, -2.4460



34.5780, 3.9440, -5.4000

Triad

The Triadic color harmony groups three colors that are evenly spaced from another and form a triangle on the color wheel.



35.0950, 9.8580, -2.4460



31.0300, -17.8800, -6.3600



36.7710, 2.3830, 6.3750

Complementary

The Complementary color scheme is a pair of colors which are on the opposite of each other on the color wheel.



35.0950, 9.8580, -2.4460



27.9050, -9.8580, 2.4460

Split Complementary

Split-complementary colors differ from the complementary color scheme. The scheme consists of three colors, the original color and two neighbors of the complement color.



35.5250, -5.7320, 4.7640



35.0950, 9.8580, -2.4460



31.5400, -19.2560, -3.4480

Square

The Square scheme is like the rectangle color scheme, but the four colors are evenly spaced on the color wheel.



35.0950, 9.8580, -2.4460



31.6240, -10.8650, -6.8410



33.8120, -14.0300, 0.9620



36.5930, 8.7560, 6.5160

Rectangle

The Rectangle color scheme consists of four colors that form a rectangle on the color wheel.



35.0950, 9.8580, -2.4460



33.5990, -0.5490, -6.5730



33.8120, -14.0300, 0.9620



36.1020, -0.0470, 6.3610

Sweetspot

The Sweet Spot groups the original color and five complimentary colors.



35.0950, 9.8580, -2.4460



53.2130, 3.7140, -1.2300



27.9030, 10.8190, 7.6750



26.2560, 2.1550, -0.5090



156.0000, -0.0000, -0.0000



28.0000, -0.0000, 0.0000

Same Dimension

The Same Dimension uses a secret algorithm to generate beautiful new colors.



35.0950, 9.8580, -2.4460



43.6780, 15.4060, -3.8740



39.7800, 6.1910, -7.5770



19.7720, 0.6420, -0.6220



55.0530, 36.0390, -8.8650



139.1110, 90.8770, -22.5230

Inverse Universe

The Inverse Universe completely reimagines the original color for something new.



27.9050, -9.8580, 2.4460



32.3220, -15.4060, 3.8740



23.2200, -6.1910, 7.5770



18.8150, -0.9170, 0.0990



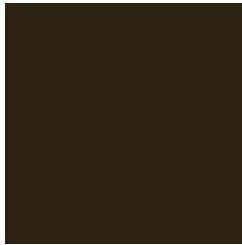
28.9470, -36.0390, 8.8650



72.8890, -90.8770, 22.5230

Previews

White Background



This preview shows how the YIQ color 35.0950, 9.8580, -2.4460 looks on a white background.

Color Contrast Check

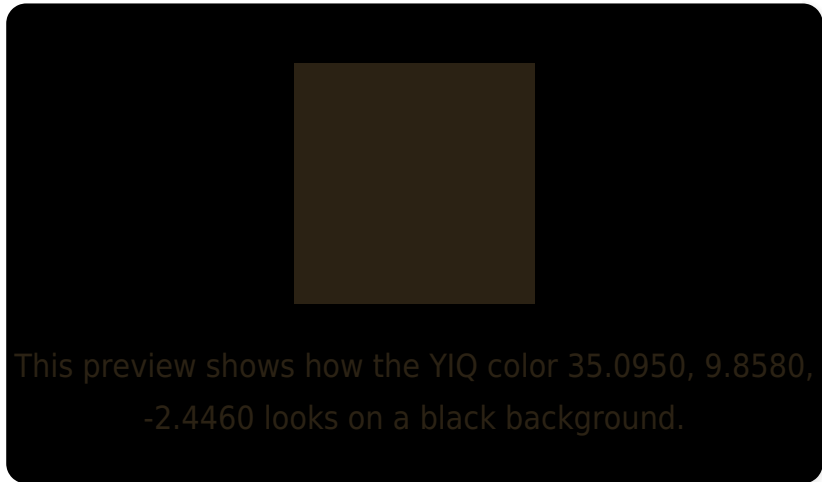
Large Text (above 18pt) WCAG AA ✓ Pass

Any Text WCAG AA ✓ Pass

Large Text (above 18pt) WCAG AAA ✓ Pass

Any Text WCAG AAA ✓ Pass

Black Background



Color Contrast Check

Large Text (above 18pt) WCAG AA × Fail

Any Text WCAG AA × Fail

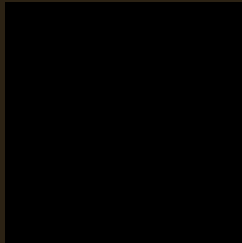
Large Text (above 18pt) WCAG AAA × Fail

Any Text WCAG AAA × Fail

If you want to check with other color combinations, try the [Color Contrast Checker](#).

YIQ 35.0950, 9.8580, -2.4460

Background



This preview shows how black text looks on a background with the YIQ color 35.0950, 9.8580, -2.4460.



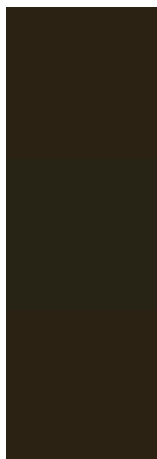
This preview shows how white text looks on a background with the YIQ color 35.0950, 9.8580,

-2.4460.

Color Blindness Simulation

Color vision deficiency is a very complex topic, and I could not describe the different causes any better than Wikipedia does, so if you want to learn more, you should check out their [article about color blindness](#).

Dichromacy



Original Color

35.0950, 9.8580, -2.4460

Protanopia

35.1870, 6.6030, -4.0290

Deuteranopia

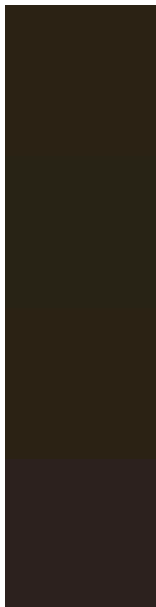
35.0950, 9.8580, -2.4460



Tritanopia

35.9300, 6.1890, 3.4770

Trichromacy



Original Color

35.0950, 9.8580, -2.4460

Protanomaly

34.8990, 7.4740, -3.2940

Deuteranomaly

35.0950, 9.8580, -2.4460

Tritanomaly

35.9470, 7.5190, 1.3990

Monochromacy



Original Color

35.0950, 9.8580, -2.4460

Achromatopsia

35.0000, 0.0000, 0.0000

Achromatomaly

35.3270, 3.3930, -0.9190

CSS Examples

Text

The CSS property to change the color of the text to YIQ 35.0950, 9.8580, -2.4460 is called "color". The color property can be set on classes, ids or directly on the HTML element.

This example shows how text in the color `rgb(43, 34, 20)` looks like.

```
.text, #text, p{  
    color:rgb(43, 34, 20)  
}
```

If you want to add a text shadow in that color use the text-shadow property, you can generate a text shadow directly with our [CSS Text Shadow Generator](#).

Here you see how black text with a 4 pixel rgb(43, 34, 20) colored shadow looks like.

```
.shadow{ text-shadow: 4px 4px 2px rgb(43, 34, 20) }
```

Border

The CSS property to change the border of an element to YIQ 35.0950, 9.8580, -2.4460 is called "border". The border property can be set on classes, ids or directly on the HTML element.

This example shows the color as border, it can be applied via the CSS property "border" or "border-color".

```
.border, #border, table{ border:4px solid rgb(43, 34, 20) }
```


If only the border color should be changed use the property `border-color`.

```
.border{ border-color:rgb(43, 34, 20) }
```

If you want to add a box shadow in that color use:

Here you see how a box with a 4 pixel `rgb(43, 34, 20)` colored shadow looks like.

```
.boxshadow{ -moz-box-shadow:4px 4px 4px  
4px rgb(43, 34, 20); -webkit-box-  
shadow:4px 4px 4px 4px rgb(43, 34, 20);  
box-shadow:4px 4px 4px 4px rgb(43, 34, 20)  
}
```

Background

The CSS property to change the background color of an element to YIQ 35.0950, 9.8580, -2.4460 is called "background". The background property can be set on classes, ids or directly on the HTML element.

```
.background, #background, body{  
background: rgb(43, 34, 20) }
```

If only the background color should be changed can be used:

```
.background{ background-color: rgb(43, 34,  
20) }
```

This example shows the color as background, it is applied via the CSS property "background".

To optimize and compress your CSS code, you can use our [online CSS compressor and optimizer](#) based on csstidy. If you want to create a linear or radial gradient as background or border, check our [CSS Gradient Generator](#).

Hey! You found this booklet interesting? Support Converting Colors with the new Membership Option!

The pro membership hides all ads, plus gives you double the colors in the color bucket, and more awesome pro features!

[Learn more, Memberships starting at \\$2.50/m!](#)

**Follow me
on Twitter!**

@ConvertingColor