

Converting Colors

YIQ(35.5250, 20.6310, 6.0630)

Have a look what the booklet for
YIQ(35.5250, 20.6310, 6.0630)
contains.

YIQ(35.5250, 20.6310, 6.0630)	3
<i>Conversions</i>	4
<i>Details</i>	6
<i>Harmonies</i>	12
<i>Previews</i>	24
<i>Color Blindness Simulation</i>	28
<i>CSS Examples</i>	31

Color

**YIQ(35.5250, 20.6310,
6.0630)**

Conversions

Conversions Part 1

Format	Color
Hex	3B1A17
RGB	59, 26, 23
RGB Percent	23%, 10%, 9%
CMY	0.7686, 0.8981, 0.9097
CMYK	0.00, 0.56, 0.61, 0.77
HSL	5°, 44%, 16%
HSV	5°, 61%, 23%
XYZ	2.3287, 1.7305, 1.0230
YIQ	35.5250, 20.6310, 6.0630

Conversions

Conversions Part 2

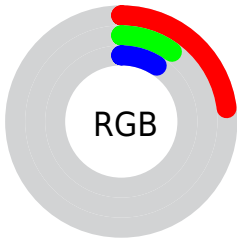
Format	Color
R_{YB}	59, 26, 23
Decimal	3873303
CIE _{Lab}	14.00, 15.89, 9.53
CIE _{LCh}	14, 18.530, 30.946
Yxy	1.7305, 0.4582, 0.3405
Android (android.graphics.Color)	4282063383 (0xFF3B1A17)
YUV	35.5250, -6.1748, 20.5876
Hunter-Lab	13.1549, 8.5777, 4.5976

Details

The YIQ color **35.5250, 20.6310, 6.0630** is a dark color, and the websafe version is hex **330000**. A complement of this color would be **46.4750, -20.6310, -6.0630**, and the grayscale version is **36.0000, -0.0000, 0.0000**.

A 20% lighter version of the original color is **81.2050, 24.5280, 7.0240**, and **0.0000, 0.0000, 0.0000** is the 20% darker color. If you saturate the color by 10%, you get **31.9060, 23.9320, 6.8120**, and if you desaturate by 10%, it is **39.1440, 17.3300, 5.3140**.

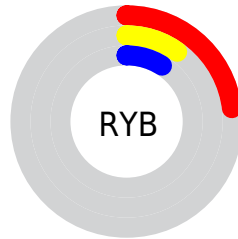
Distribution



Red (23%)

Green (10%)

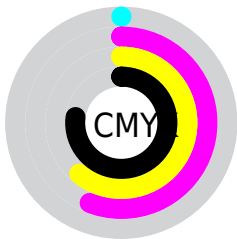
Blue (9%)



Red (23%)

Yellow (10%)

Blue (9%)

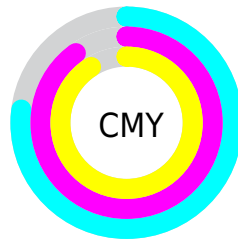


Cyan (0%)

Magenta (56%)

Yellow (61%)

Black (77%)



Cyan (77%)

Magenta (90%)

Yellow (91%)

Brightness & Saturation Gradients

These gradients show how the YIQ color 35.5250, 20.6310, 6.0630 changes by changing the brightness by 10 percent. The first figure shows a shift by +10% for each color and the second figure -10%.

Similar to the brightness gradients but the following saturation gradients show a change of the YIQ color 35.5250, 20.6310, 6.0630 by changing the saturation by 10% instead.

■ 35.5250, 20.6310,
6.0630

■ 35.5250, 20.6310,
6.0630

■ 254.3160, 1.9260,
-1.8660

■ 12.5360, 22.0980,
7.0100

■ 81.2050, 24.5280,
7.0240

■ 0.0000, 0.0000,
0.0000

■ 105.6890, 26.0410,
7.1370

■ 130.8740, 26.9580,
7.0380

■ 157.4720, 28.1500,
7.4620

■ 184.0700, 29.3420,
7.8860

■ 212.2550, 30.2590,

7.7870

234.5740, 18.9350,
3.7590

35.5250, 20.6310,
6.0630

35.5250, 20.6310,
6.0630

31.9060, 23.9320,
6.8120

39.1440, 17.3300,
5.3140

27.7000, 27.5080,
8.0840

43.3500, 13.7540,
4.0420

24.0810, 30.8090,
8.8330

46.9690, 10.4530,
3.2930

20.5760, 33.7890,
9.8930

51.1750, 6.8770,
2.0210

54.7940, 3.5760,
1.2720

■ 58.2990, 0.5960,
0.2120

■ 62.5050, -2.9800,
-1.0600

■ 66.1240, -6.2810,
-1.8090

■ 70.3300, -9.8570,
-3.0810

Harmonies

Analogous

The Analogous color harmony consists of three colors that are next to each other on the color wheel.



35.8330, 17.0080, 11.1520



35.5250, 20.6310, 6.0630



34.7110, 19.8070, -1.0330

Triad

The Triadic color harmony groups three colors that are evenly spaced from another and form a triangle on the color wheel.



35.5250, 20.6310, 6.0630



30.2770, -11.5060, -11.7460



32.2610, -22.6040, 2.1640

Complementary

The Complementary color scheme is a pair of colors which are on the opposite of each other on the color wheel.



35.5250, 20.6310, 6.0630



46.4750, -20.6310, -6.0630

Split Complementary

Split-complementary colors differ from the complementary color scheme. The scheme consists of three colors, the original color and two neighbors of the complement color.



30.0920, -29.6180, -2.8820



35.5250, 20.6310, 6.0630



28.7580, -23.1060, -10.7700

Square

The Square scheme is like the rectangle color scheme, but the four colors are evenly spaced on the color wheel.



35.5250, 20.6310, 6.0630



33.1170, 3.6240, -10.6160



30.2400, -27.2790, -6.7270



36.4590, -5.3660, 9.1460

Rectangle

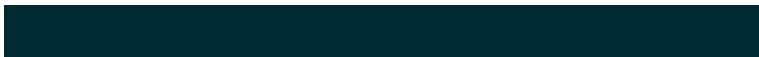
The Rectangle color scheme consists of four colors that form a rectangle on the color wheel.



35.5250, 20.6310, 6.0630



34.1080, 17.0110, -5.4290



30.2400, -27.2790, -6.7270



29.2600, -30.0310, -0.9030

Sweetspot

The Sweet Spot groups the original color and five complimentary colors.



35.5250, 20.6310, 6.0630



67.7730, 8.0690, 2.4450



37.6400, 10.5420, 18.2060



32.9790, 4.4930, 1.1730



166.0000, -0.0000, 0.0000



38.0000, -0.0000, -0.0000

Same Dimension

The Same Dimension uses a secret algorithm to generate beautiful new colors.



35.5250, 20.6310, 6.0630



40.0920, 32.2760, 9.7800



45.5040, 15.9560, -2.8280



28.8970, 1.7880, 0.6360



32.8020, 53.8240, 15.7440



76.9440, 127.3620, 37.6500

Inverse Universe

The Inverse Universe completely reimagines the original color for something new.



46.4750, -20.6310, -6.0630



57.3210, -32.0010, -9.2570



36.4960, -15.9560, 2.8280



29.5160, -1.5130, -0.1130



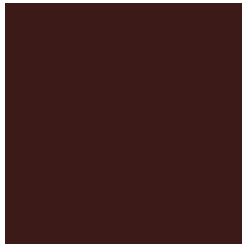
61.7850, -54.0990, -16.2670



145.0560, -127.3620, -37.6500

Previews

White Background



This preview shows how the YIQ color 35.5250, 20.6310, 6.0630 looks on a white background.

Color Contrast Check

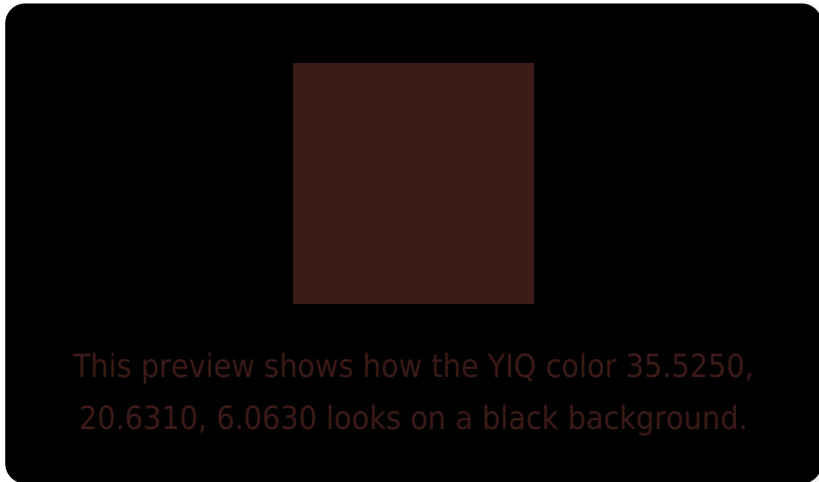
Large Text (above 18pt) WCAG AA ✓ Pass

Any Text WCAG AA ✓ Pass

Large Text (above 18pt) WCAG AAA ✓ Pass

Any Text WCAG AAA ✓ Pass

Black Background



Color Contrast Check

Large Text (above 18pt) WCAG AA × Fail

Any Text WCAG AA × Fail

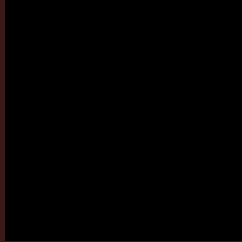
Large Text (above 18pt) WCAG AAA × Fail

Any Text WCAG AAA × Fail

If you want to check with other color combinations, try the [Color Contrast Checker](#).

YIQ 35.5250, 20.6310, 6.0630

Background



This preview shows how black text looks on a background with the YIQ color 35.5250, 20.6310, 6.0630.



This preview shows how white text looks on a background with the YIQ color 35.5250, 20.6310,

Color Blindness Simulation

Color vision deficiency is a very complex topic, and I could not describe the different causes any better than Wikipedia does, so if you want to learn more, you should check out their [article about color blindness](#).

Dichromacy



Original Color

35.5250, 20.6310, 6.0630

Protanopia

35.8710, 4.6770, -2.1630

Deuteranopia

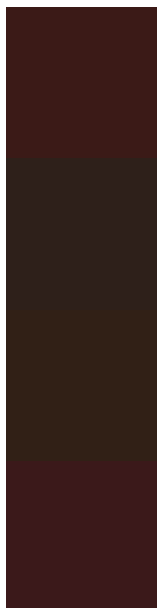
36.0950, 9.8580, -2.4460



Tritanopia

35.3940, 19.6220, 7.8300

Trichromacy



Original Color

35.5250, 20.6310, 6.0630

Protanomaly

35.5020, 10.2700, 1.1020

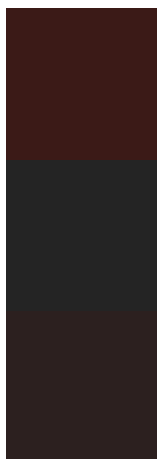
Deuteranomaly

35.9430, 13.3420, 0.4940

Tritanomaly

35.2800, 19.9430, 7.5190

Monochromacy



Original Color

35.5250, 20.6310, 6.0630

Achromatopsia

36.0000, -0.0000, 0.0000

Achromatomaly

35.4740, 7.4730, 2.2330

CSS Examples

Text

The CSS property to change the color of the text to YIQ 35.5250, 20.6310, 6.0630 is called "color". The color property can be set on classes, ids or directly on the HTML element.

This example shows how text in the color `rgb(59, 26, 23)` looks like.

```
.text, #text, p{  
    color:rgb(59, 26, 23)  
}
```

If you want to add a text shadow in that color use the text-shadow property, you can generate a text shadow directly with our [CSS Text Shadow Generator](#).

Here you see how black text with a 4 pixel rgb(59, 26, 23) colored shadow looks like.

```
.shadow{ text-shadow: 4px 4px 2px rgb(59, 26, 23) }
```

Border

The CSS property to change the border of an element to YIQ 35.5250, 20.6310, 6.0630 is called "border". The border property can be set on classes, ids or directly on the HTML element.

This example shows the color as border, it can be applied via the CSS property "border" or "border-color".

```
.border, #border, table{ border:4px solid rgb(59, 26, 23) }
```


If only the border color should be changed use the property border-color.

```
.border{ border-color:rgb(59, 26, 23) }
```

If you want to add a box shadow in that color use:

Here you see how a box with a 4 pixel rgb(59, 26, 23) colored shadow looks like.

```
.boxshadow{ -moz-box-shadow:4px 4px 4px  
4px rgb(59, 26, 23); -webkit-box-  
shadow:4px 4px 4px 4px rgb(59, 26, 23);  
box-shadow:4px 4px 4px 4px rgb(59, 26, 23)  
}
```

Background

The CSS property to change the background color of an element to YIQ 35.5250, 20.6310, 6.0630 is called "background". The background property can be set on classes, ids or directly on the HTML element.

```
.background, #background, body{  
background: rgb(59, 26, 23) }
```

If only the background color should be changed can be used:

```
.background{ background-color: rgb(59, 26,  
23) }
```

This example shows the color as background, it is applied via the CSS property "background".

To optimize and compress your CSS code, you can use our [online CSS compressor and optimizer](#) based on csstidy. If you want to create a linear or radial gradient as background or border, check our [CSS Gradient Generator](#).

Hey! You found this booklet
interesting? Support Converting
Colors with the new Membership
Option!

The pro membership hides all ads, plus gives you
double the colors in the color bucket, and more
awesome pro features!

[Learn more, Memberships starting at \\$2.50/m!](#)

**Follow me
on Twitter!**

@ConvertingColor