

Converting Colors

YIQ(37.7180, 9.9020, 7.7740)

Have a look what the booklet for
YIQ(37.7180, 9.9020, 7.7740)
contains.

YIQ(37.7180, 9.9020, 7.7740)	3
<i>Conversions</i>	4
<i>Details</i>	6
<i>Harmonies</i>	12
<i>Previews</i>	24
<i>Color Blindness Simulation</i>	27
<i>CSS Examples</i>	30

Color

YIQ(37.7180, 9.9020, 7.7740)

Conversions

Conversions Part 1

Format	Color
Hex	341E28
RGB	52, 30, 40
RGB Percent	20%, 12%, 16%
CMY	0.7960, 0.8824, 0.8431
CMYK	0.00, 0.42, 0.23, 0.80
HSL	333°, 27%, 16%
HSV	333°, 42%, 20%
XYZ	2.2641, 1.8118, 2.2386
YIQ	37.7180, 9.9020, 7.7740

Conversions

Conversions Part 2

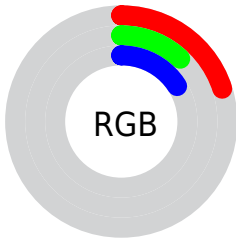
Format	Color
R _Y B	52, 30, 40
Decimal	3415592
CIE Lab	14.47, 12.54, -2.26
CIE LCh	14, 12.745, 349.782
Yxy	1.8118, 0.3586, 0.2869
Android (android.graphics.Color)	4281605672 (0xFF341E28)
YUV	37.7180, 1.1250, 12.5253
Hunter-Lab	13.4603, 6.4695, -0.4383

Details

The YIQ color **37.7180, 9.9020, 7.7740** is a dark color, and the websafe version is hex **333333**. A complement of this color would be **44.2820, -9.9020, -7.7740**, and the grayscale version is **38.0000, -0.0000, -0.0000**.

A 20% lighter version of the original color is **82.7290, 11.3690, 8.7210**, and **0.0000, 0.0000, 0.0000** is the 20% darker color. If you saturate the color by 10%, you get **34.4410, 12.2400, 9.4560**, and if you desaturate by 10%, it is **40.9950, 7.5640, 6.0920**.

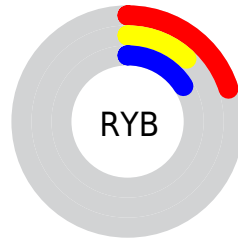
Distribution



Red (20%)

Green (12%)

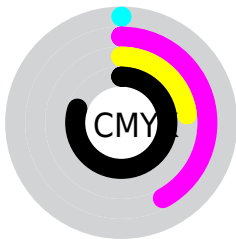
Blue (16%)



Red (20%)

Yellow (12%)

Blue (16%)

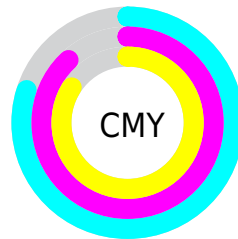


Cyan (0%)

Magenta (42%)

Yellow (23%)

Black (80%)



Cyan (80%)

Magenta (88%)

Yellow (84%)

Brightness & Saturation Gradients

These gradients show how the YIQ color 37.7180, 9.9020, 7.7740 changes by changing the brightness by 10 percent. The first figure shows a shift by +10% for each color and the second figure -10%.

Similar to the brightness gradients but the following saturation gradients show a change of the YIQ color 37.7180, 9.9020, 7.7740 by changing the saturation by 10% instead.

■ 37.7180, 9.9020,
7.7740

■ 37.7180, 9.9020,
7.7740

■ 255.0000, -0.0000,
-0.0000

■ 15.9570, 10.7270,
9.3430

■ 82.7290, 11.3690,
8.7210

■ 0.0000, 0.0000,
0.0000

■ 107.0280, 11.9650,
8.9330

■ 132.4410, 12.2400,
9.4560

■ 158.7400, 12.8360,
9.6680

■ 186.0390, 13.4320,
9.8800

■ 213.3380, 14.0280,

10.0920

239.6580, 10.1310,
9.1310

37.7180, 9.9020,
7.7740

37.7180, 9.9020,
7.7740

34.4410, 12.2400,
9.4560

40.9950, 7.5640,
6.0920

31.1640, 14.5780,
11.1380

44.2720, 5.2260,
4.4100

27.4140, 16.8700,
13.6540

48.1360, 2.6130,
2.2050

24.1370, 19.2080,
15.3360

51.2990, 0.5960,
0.2120

20.8600, 21.5460,
17.0180

54.5760, -1.7420,
-1.4700

■ 18.2840, 23.2880,
18.4880

■ 57.8530, -4.0800,
-3.1520

■ 61.1300, -6.4180,
-4.8340

■ 64.9940, -9.0310,
-7.0390

■ 68.2710, -11.3690,
-8.7210

Harmonies

Analogous

The Analogous color harmony consists of three colors that are next to each other on the color wheel.



37.7110, 2.6120, 7.7320



37.7180, 9.9020, 7.7740



37.2900, 13.9830, 5.3990

Triad

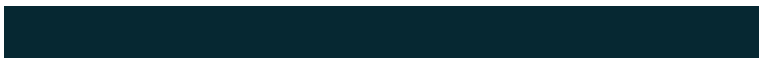
The Triadic color harmony groups three colors that are evenly spaced from another and form a triangle on the color wheel.



37.7180, 9.9020, 7.7740



35.5350, 5.5030, -6.1210



30.9740, -23.4740, -4.0980

Complementary

The Complementary color scheme is a pair of colors which are on the opposite of each other on the color wheel.



37.7180, 9.9020, 7.7740



44.2820, -9.9020, -7.7740

Split Complementary

Split-complementary colors differ from the complementary color scheme. The scheme consists of three colors, the original color and two neighbors of the complement color.



30.3500, -21.7770, -7.3210



37.7180, 9.9020, 7.7740



34.1040, -3.5290, -7.6330

Square

The Square scheme is like the rectangle color scheme, but the four colors are evenly spaced on the color wheel.



37.7180, 9.9020, 7.7740



36.1660, 11.0960, -2.8560



32.3140, -12.9280, -8.0000



34.1430, -16.4600, 0.9480

Rectangle

The Rectangle color scheme consists of four colors that form a rectangle on the color wheel.



37.7180, 9.9020, 7.7740



37.0080, 14.7170, 3.1090



32.3140, -12.9280, -8.0000



30.7350, -24.2990, -5.6670

Sweetspot

The Sweet Spot groups the original color and five complimentary colors.



37.7180, 9.9020, 7.7740



63.1470, 4.0800, 3.1520



36.0960, 0.0900, 9.3860



32.1360, 2.6130, 2.2050



163.0000, -0.0000, -0.0000



36.0000, -0.0000, 0.0000

Same Dimension

The Same Dimension uses a secret algorithm to generate beautiful new colors.



37.7180, 9.9020, 7.7740



46.2890, 15.7240, 12.3960



37.1650, 12.8370, 4.1410



24.0110, 1.4670, 0.9470



31.2850, 39.8830, 31.6190



76.1690, 97.5530, 76.7930

Inverse Universe

The Inverse Universe completely reimagines the original color for something new.



37.7180, 9.9020, 7.7740



46.2890, 15.7240, 12.3960



44.8350, -12.8370, -4.1410



24.0110, 1.4670, 0.9470



31.2850, 39.8830, 31.6190



76.1690, 97.5530, 76.7930

Previews

White Background



This preview shows how the YIQ color 37.7180, 9.9020, 7.7740 looks on a white background.

Color Contrast Check

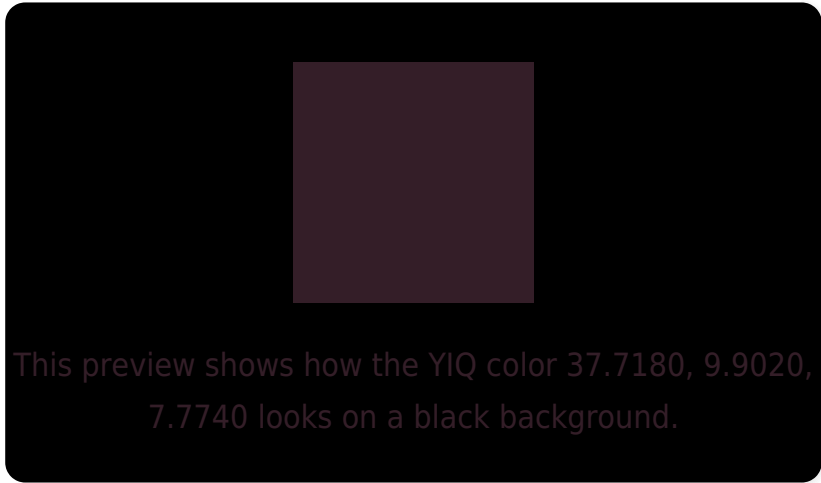
Large Text (above 18pt) WCAG AA ✓ Pass

Any Text WCAG AA ✓ Pass

Large Text (above 18pt) WCAG AAA ✓ Pass

Any Text WCAG AAA ✓ Pass

Black Background



Color Contrast Check

Large Text (above 18pt) WCAG AA × Fail

Any Text WCAG AA × Fail

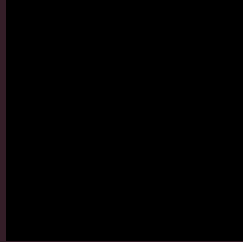
Large Text (above 18pt) WCAG AAA × Fail

Any Text WCAG AAA × Fail

If you want to check with other color combinations, try the [Color Contrast Checker](#).

YIQ 37.7180, 9.9020, 7.7740

Background



This preview shows how black text looks on a background with the YIQ color 37.7180, 9.9020, 7.7740.



This preview shows how white text looks on a background with the YIQ color 37.7180, 9.9020, 7.7740.

Color Blindness Simulation

Color vision deficiency is a very complex topic, and I could not describe the different causes any better than Wikipedia does, so if you want to learn more, you should check out their [article about color blindness](#).

Dichromacy



Original Color

37.7180, 9.9020, 7.7740

Protanopia

37.2000, -3.4390, 1.7530

Deuteranopia

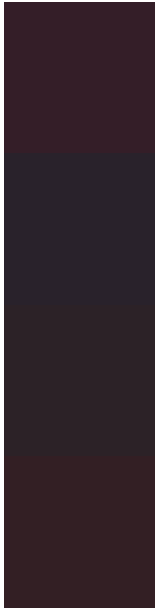
37.5380, 1.4210, 1.7810



Tritanopia

37.3220, 10.9570, 5.1730

Trichromacy



Original Color

37.7180, 9.9020, 7.7740

Protanomaly

37.1190, 1.2830, 4.2830

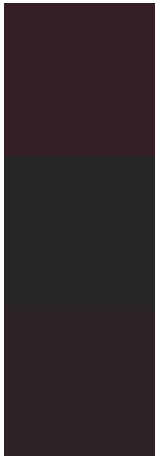
Deuteranomaly

37.5600, 4.3550, 3.6750

Tritanomaly

37.5500, 10.3150, 5.7950

Monochromacy



Original Color

37.7180, 9.9020, 7.7740

Achromatopsia

38.0000, -0.0000, -0.0000

Achromatomaly

37.8480, 3.4840, 2.9400

CSS Examples

Text

The CSS property to change the color of the text to YIQ 37.7180, 9.9020, 7.7740 is called "color". The color property can be set on classes, ids or directly on the HTML element.

This example shows how text in the color `rgb(52, 30, 40)` looks like.

```
.text, #text, p{  
    color:rgb(52, 30, 40)  
}
```

If you want to add a text shadow in that color use the text-shadow property, you can generate a text shadow directly with our [CSS Text Shadow Generator](#).

Here you see how black text with a 4 pixel rgb(52, 30, 40) colored shadow looks like.

```
.shadow{ text-shadow: 4px 4px 2px rgb(52, 30, 40) }
```

Border

The CSS property to change the border of an element to YIQ 37.7180, 9.9020, 7.7740 is called "border". The border property can be set on classes, ids or directly on the HTML element.

This example shows the color as border, it can be applied via the CSS property "border" or "border-color".

```
.border, #border, table{ border:4px solid rgb(52, 30, 40) }
```

If only the border color should be changed use the property `border-color`.

```
.border{ border-color:rgb(52, 30, 40) }
```

If you want to add a box shadow in that color use:

Here you see how a box with a 4 pixel `rgb(52, 30, 40)` colored shadow looks like.

```
.boxshadow{ -moz-box-shadow:4px 4px 4px  
4px rgb(52, 30, 40); -webkit-box-  
shadow:4px 4px 4px 4px rgb(52, 30, 40);  
box-shadow:4px 4px 4px 4px rgb(52, 30, 40)  
}
```


Background

The CSS property to change the background color of an element to YIQ 37.7180, 9.9020, 7.7740 is called "background". The background property can be set on classes, ids or directly on the HTML element.

```
.background, #background, body{  
background: rgb(52, 30, 40) }
```

If only the background color should be changed can be used:

```
.background{ background-color: rgb(52, 30,  
40) }
```

This example shows the color as background, it is applied via the CSS property "background".

To optimize and compress your CSS code, you can use our [online CSS compressor and optimizer](#) based on csstidy. If you want to create a linear or radial gradient as background or border, check our [CSS Gradient Generator](#).

Hey! You found this booklet interesting? Support Converting Colors with the new Membership Option!

The pro membership hides all ads, plus gives you double the colors in the color bucket, and more awesome pro features!

[Learn more, Memberships starting at \\$2.50/m!](#)

**Follow me
on Twitter!**

@ConvertingColor