

Converting Colors

YIQ(38.3290, 18.2470, 5.2150)

Have a look what the booklet for
YIQ(38.3290, 18.2470, 5.2150)
contains.

YIQ(38.3290, 18.2470, 5.2150)	3
<i>Conversions</i>	4
<i>Details</i>	6
<i>Harmonies</i>	12
<i>Previews</i>	24
<i>Color Blindness Simulation</i>	28
<i>CSS Examples</i>	31

Color

**YIQ(38.3290, 18.2470,
5.2150)**

Conversions

Conversions Part 1

Format	Color
Hex	3B1E1B
RGB	59, 30, 27
RGB Percent	23%, 12%, 11%
CMY	0.7686, 0.8824, 0.8940
CMYK	0.00, 0.49, 0.54, 0.77
HSL	6°, 37%, 17%
HSV	6°, 54%, 23%
XYZ	2.4667, 1.9375, 1.2820
YIQ	38.3290, 18.2470, 5.2150

Conversions

Conversions Part 2

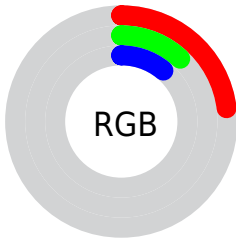
Format	Color
R_{YB}	59, 30, 27
Decimal	3874331
CIE Lab	15.16, 13.74, 8.22
CIE LCh	15, 16.011, 30.877
Yxy	1.9375, 0.4338, 0.3407
Android (android.graphics.Color)	4282064411 (0xFF3B1E1B)
YUV	38.3290, -5.5852, 18.1285
Hunter-Lab	13.9193, 7.2734, 4.2827

Details

The YIQ color **38.3290, 18.2470, 5.2150** is a dark color, and the websafe version is hex **330000**. A complement of this color would be **47.6710, -18.2470, -5.2150**, and the grayscale version is **38.0000, -0.0000, -0.0000**.

A 20% lighter version of the original color is **83.7100, 21.5480, 5.9640**, and **0.0000, 0.0000, 0.0000** is the 20% darker color. If you saturate the color by 10%, you get **34.7100, 21.5480, 5.9640**, and if you desaturate by 10%, it is **41.9480, 14.9460, 4.4660**.

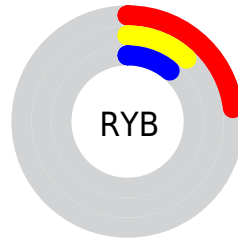
Distribution



Red (23%)

Green (12%)

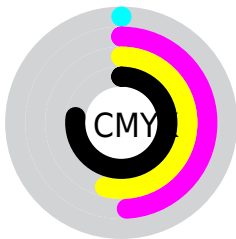
Blue (11%)



Red (23%)

Yellow (12%)

Blue (11%)

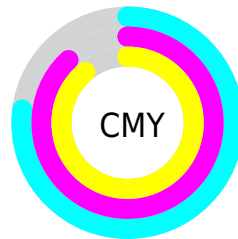


Cyan (0%)

Magenta (49%)

Yellow (54%)

Black (77%)



Cyan (77%)

Magenta (88%)

Yellow (89%)

Brightness & Saturation Gradients

These gradients show how the YIQ color 38.3290, 18.2470, 5.2150 changes by changing the brightness by 10 percent. The first figure shows a shift by +10% for each color and the second figure -10%.

Similar to the brightness gradients but the following saturation gradients show a change of the YIQ color 38.3290, 18.2470, 5.2150 by changing the saturation by 10% instead.

■ 38.3290, 18.2470,
5.2150

■ 38.3290, 18.2470,
5.2150

■ 254.8860, 0.3210,
-0.3110

■ 15.4710, 20.7230,
4.3950

■ 83.7100, 21.5480,
5.9640

■ 0.0000, 0.0000,
0.0000

■ 108.3080, 22.7400,
6.3880

■ 133.7920, 24.2530,
6.5010

■ 160.0910, 24.8490,
6.7130

■ 187.3900, 25.4450,
6.9250

■ 214.9880, 26.6370,

7.3490

238.1930, 15.6340,
3.0100

38.3290, 18.2470,
5.2150

38.3290, 18.2470,
5.2150

34.7100, 21.5480,
5.9640

41.9480, 14.9460,
4.4660

30.5040, 25.1240,
7.2360

46.1540, 11.3700,
3.1940

26.8850, 28.4250,
7.9850

49.7730, 8.0690,
2.4450

23.2660, 31.7260,
8.7340

53.3920, 4.7680,
1.6960

20.5760, 33.7890,
9.8930

57.5980, 1.1920,
0.4240

■ 61.1030, -1.7880,
-0.6360

■ 64.7220, -5.0890,
-1.3850

■ 68.9280, -8.6650,
-2.6570

■ 72.5470, -11.9660,
-3.4060

Harmonies

Analogous

The Analogous color harmony consists of three colors that are next to each other on the color wheel.



38.9960, 14.9910, 9.1590



38.3290, 18.2470, 5.2150



37.5690, 17.3310, -0.2130

Triad

The Triadic color harmony groups three colors that are evenly spaced from another and form a triangle on the color wheel.



38.3290, 18.2470, 5.2150



34.0000, -9.1680, -10.0640



35.7130, -18.0650, 2.5030

Complementary

The Complementary color scheme is a pair of colors which are on the opposite of each other on the color wheel.



38.3290, 18.2470, 5.2150



47.6710, -18.2470, -5.2150

Split Complementary

Split-complementary colors differ from the complementary color scheme. The scheme consists of three colors, the original color and two neighbors of the complement color.



31.1520, -29.8470, -4.2390



38.3290, 18.2470, 5.2150



30.4590, -23.7020, -10.9820

Square

The Square scheme is like the rectangle color scheme, but the four colors are evenly spaced on the color wheel.



38.3290, 18.2470, 5.2150



35.9860, 2.6150, -8.8490



31.4140, -27.8290, -7.7730



38.7040, -4.6780, 7.6900

Rectangle

The Rectangle color scheme consists of four colors that form a rectangle on the color wheel.



38.3290, 18.2470, 5.2150



37.1940, 13.8930, -3.9870



31.4140, -27.8290, -7.7730



33.9080, -23.1080, 0.2840

Sweetspot

The Sweet Spot groups the original color and five complimentary colors.



38.3290, 18.2470, 5.2150



68.4740, 7.4730, 2.2330



39.8740, 9.7630, 15.8030



33.6800, 3.8970, 0.9610



166.0000, -0.0000, 0.0000



38.0000, -0.0000, -0.0000

Same Dimension

The Same Dimension uses a secret algorithm to generate beautiful new colors.



38.3290, 18.2470, 5.2150



44.2980, 28.7000, 8.5080



47.7210, 13.8470, -3.1530



28.8970, 1.7880, 0.6360



33.3890, 53.5490, 15.2210



78.7050, 126.5370, 36.0810

Inverse Universe

The Inverse Universe completely reimagines the original color for something new.



47.6710, -18.2470, -5.2150



59.1150, -28.4250, -7.9850



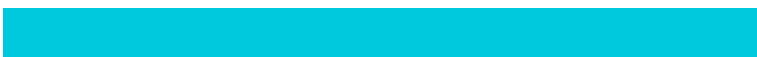
38.2790, -13.8470, 3.1530



29.5160, -1.5130, -0.1130



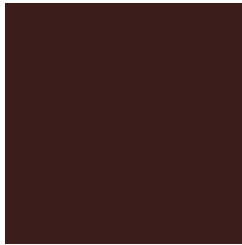
61.1980, -53.8240, -15.7440



143.2950, -126.5370, -36.0810

Previews

White Background



This preview shows how the YIQ color 38.3290, 18.2470, 5.2150 looks on a white background.

Color Contrast Check

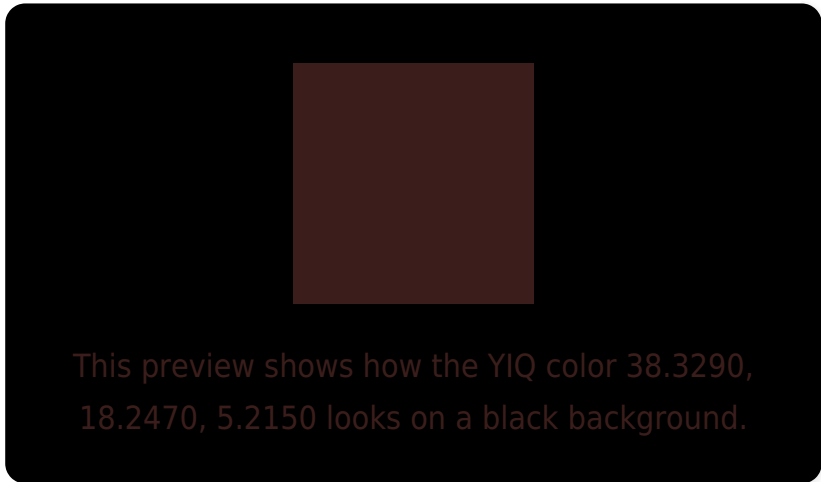
Large Text (above 18pt) WCAG AA ✓ Pass

Any Text WCAG AA ✓ Pass

Large Text (above 18pt) WCAG AAA ✓ Pass

Any Text WCAG AAA ✓ Pass

Black Background



Color Contrast Check

Large Text (above 18pt) WCAG AA × Fail

Any Text WCAG AA × Fail

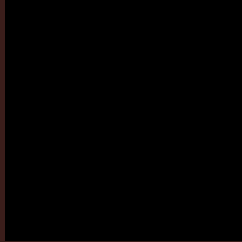
Large Text (above 18pt) WCAG AAA × Fail

Any Text WCAG AAA × Fail

If you want to check with other color combinations, try the [Color Contrast Checker](#).

YIQ 38.3290, 18.2470, 5.2150

Background



This preview shows how black text looks on a background with the YIQ color 38.3290, 18.2470, 5.2150.



This preview shows how white text looks on a background with the YIQ color 38.3290, 18.2470,

Color Blindness Simulation

Color vision deficiency is a very complex topic, and I could not describe the different causes any better than Wikipedia does, so if you want to learn more, you should check out their [article about color blindness](#).

Dichromacy



Original Color

38.3290, 18.2470, 5.2150

Protanopia

38.6860, 3.7600, -2.0640

Deuteranopia

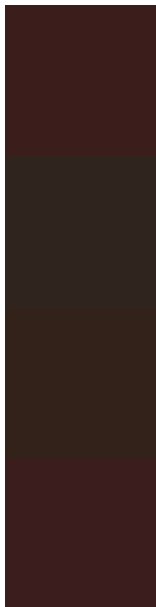
38.4370, 8.8950, -1.5130



Tritanopia

38.1980, 17.2380, 6.9820

Trichromacy



Original Color

38.3290, 18.2470, 5.2150

Protanomaly

38.9040, 9.0780, 0.6780

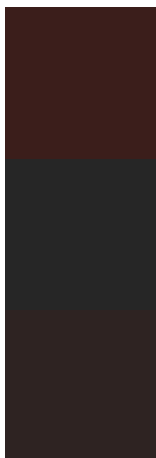
Deuteranomaly

38.1710, 12.7000, 1.1160

Tritanomaly

38.0840, 17.5590, 6.6710

Monochromacy



Original Color

38.3290, 18.2470, 5.2150

Achromatopsia

38.0000, -0.0000, -0.0000

Achromatomaly

38.1750, 6.8770, 2.0210

CSS Examples

Text

The CSS property to change the color of the text to YIQ 38.3290, 18.2470, 5.2150 is called "color". The color property can be set on classes, ids or directly on the HTML element.

This example shows how text in the color `rgb(59, 30, 27)` looks like.

```
.text, #text, p{  
    color:rgb(59, 30, 27)  
}
```

If you want to add a text shadow in that color use the text-shadow property, you can generate a text shadow directly with our [CSS Text Shadow Generator](#).

Here you see how black text with a 4 pixel rgb(59, 30, 27) colored shadow looks like.

```
.shadow{ text-shadow: 4px 4px 2px rgb(59, 30, 27) }
```

Border

The CSS property to change the border of an element to YIQ 38.3290, 18.2470, 5.2150 is called "border". The border property can be set on classes, ids or directly on the HTML element.

This example shows the color as border, it can be applied via the CSS property "border" or "border-color".

```
.border, #border, table{ border:4px solid rgb(59, 30, 27) }
```


If only the border color should be changed use the property border-color.

```
.border{ border-color:rgb(59, 30, 27) }
```

If you want to add a box shadow in that color use:

Here you see how a box with a 4 pixel rgb(59, 30, 27) colored shadow looks like.

```
.boxshadow{ -moz-box-shadow:4px 4px 4px  
4px rgb(59, 30, 27); -webkit-box-  
shadow:4px 4px 4px 4px rgb(59, 30, 27);  
box-shadow:4px 4px 4px 4px rgb(59, 30, 27)  
}
```

Background

The CSS property to change the background color of an element to YIQ 38.3290, 18.2470, 5.2150 is called "background". The background property can be set on classes, ids or directly on the HTML element.

```
.background, #background, body{  
background: rgb(59, 30, 27) }
```

If only the background color should be changed can be used:

```
.background{ background-color: rgb(59, 30,  
27) }
```

This example shows the color as background, it is applied via the CSS property "background".

To optimize and compress your CSS code, you can use our [online CSS compressor and optimizer](#) based on csstidy. If you want to create a linear or radial gradient as background or border, check our [CSS Gradient Generator](#).

Hey! You found this booklet interesting? Support Converting Colors with the new Membership Option!

The pro membership hides all ads, plus gives you double the colors in the color bucket, and more awesome pro features!

[Learn more, Memberships starting at \\$2.50/m!](#)

**Follow me
on Twitter!**

@ConvertingColor