

Converting Colors

YIQ(39.2590, 24.4360, 8.6920)

Have a look what the booklet for
YIQ(39.2590, 24.4360, 8.6920)
contains.

YIQ(39.2590, 24.4360, 8.6920)	3
<i>Conversions</i>	4
<i>Details</i>	6
<i>Harmonies</i>	12
<i>Previews</i>	24
<i>Color Blindness Simulation</i>	28
<i>CSS Examples</i>	31

Color

**YIQ(39.2590, 24.4360,
8.6920)**

Conversions

Conversions Part 1

Format	Color
Hex	441B1B
RGB	68, 27, 27
RGB Percent	27%, 11%, 11%
CMY	0.7332, 0.8942, 0.8940
CMYK	0.00, 0.60, 0.60, 0.73
HSL	360°, 43%, 19%
HSV	360°, 60%, 27%
XYZ	2.9753, 2.0922, 1.2854
YIQ	39.2590, 24.4360, 8.6920

Conversions

Conversions Part 2

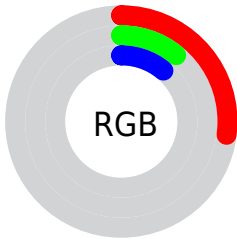
Format	Color
R_{YB}	68, 27, 27
Decimal	4463387
CIE _{Lab}	15.96, 19.81, 9.57
CIE _{LCh}	16, 21.996, 25.790
Yxy	2.0922, 0.4683, 0.3293
Android (android.graphics.Color)	4282653467 (0xFF441B1B)
YUV	39.2590, -6.0437, 25.2059
Hunter-Lab	14.4643, 11.4047, 4.8560

Details

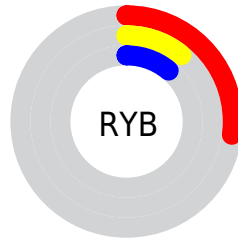
The YIQ color **39.2590, 24.4360, 8.6920** is a dark color, and the websafe version is hex **330000**. A complement of this color would be **55.7410, -24.4360, -8.6920**, and the grayscale version is **39.0000, -0.0000, -0.0000**.

A 20% lighter version of the original color is **85.8250, 28.6540, 9.3420**, and **1.7940, 3.5760, 1.2720** is the 20% darker color. If you saturate the color by 10%, you get **34.3520, 28.6080, 10.1760**, and if you desaturate by 10%, it is **44.1660, 20.2640, 7.2080**.

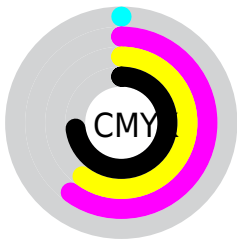
Distribution



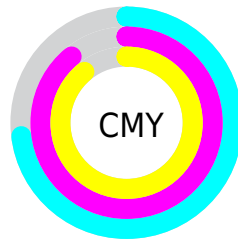
- Red (27%)
- Green (11%)
- Blue (11%)



- Red (27%)
- Yellow (11%)
- Blue (11%)



- Cyan (0%)
- Magenta (60%)
- Yellow (60%)
- Black (73%)



- Cyan (73%)
- Magenta (89%)
- Yellow (89%)

Brightness & Saturation Gradients

These gradients show how the YIQ color 39.2590, 24.4360, 8.6920 changes by changing the brightness by 10 percent. The first figure shows a shift by +10% for each color and the second figure -10%.

Similar to the brightness gradients but the following saturation gradients show a change of the YIQ color 39.2590, 24.4360, 8.6920 by changing the saturation by 10% instead.

■ 39.2590, 24.4360,
8.6920

■ 39.2590, 24.4360,
8.6920

■ 254.8860, 0.3210,
-0.3110

■ 15.8030, 25.7200,
7.4480

■ 85.8250, 28.6540,
9.3420

■ 1.7940, 3.5760,
1.2720

■ 110.4230, 29.8460,
9.7660

■ 0.0000, 0.0000,
0.0000

■ 136.2060, 31.9550,
10.0910

■ 162.8040, 33.1470,
10.5150

■ 190.1030, 33.7430,
10.7270

■ 216.8040, 33.1470,

10.5150

236.4320, 16.4590,
4.5790

39.2590, 24.4360,
8.6920

39.2590, 24.4360,
8.6920

34.3520, 28.6080,
10.1760

44.1660, 20.2640,
7.2080

29.4450, 32.7800,
11.6600

49.0730, 16.0920,
5.7240

25.2390, 36.3560,
12.9320

53.2790, 12.5160,
4.4520

20.3320, 40.5280,
14.4160

58.1860, 8.3440,
2.9680

63.0930, 4.1720,
1.4840

■ 68.0000, -0.0000,
0.0000

■ 72.9070, -4.1720,
-1.4840

■ 77.1130, -7.7480,
-2.7560

■ 82.0200, -11.9200,
-4.2400

Harmonies

Analogous

The Analogous color harmony consists of three colors that are next to each other on the color wheel.



40.1970, 18.9790, 13.9790



39.2590, 24.4360, 8.6920



38.8040, 23.9790, 0.4510

Triad

The Triadic color harmony groups three colors that are evenly spaced from another and form a triangle on the color wheel.



39.2590, 24.4360, 8.6920



33.8810, -10.4510, -14.3470



32.7480, -34.3410, 0.1150

Complementary

The Complementary color scheme is a pair of colors which are on the opposite of each other on the color wheel.



39.2590, 24.4360, 8.6920



55.7410, -24.4360, -8.6920

Split Complementary

Split-complementary colors differ from the complementary color scheme. The scheme consists of three colors, the original color and two neighbors of the complement color.



34.4120, -33.5150, -3.8430



39.2590, 24.4360, 8.6920



31.8070, -24.8020, -13.0740

Square

The Square scheme is like the rectangle color scheme, but the four colors are evenly spaced on the color wheel.



39.2590, 24.4360, 8.6920



36.6180, 6.4670, -12.5810



33.6310, -29.9380, -8.0980



39.9470, -9.6760, 10.1640

Rectangle

The Rectangle color scheme consists of four colors that form a rectangle on the color wheel.



39.2590, 24.4360, 8.6920



38.1470, 21.2750, -5.6130



33.6310, -29.9380, -8.0980



33.8080, -34.5700, -1.2420

Sweetspot

The Sweet Spot groups the original color and five complimentary colors.



39.2590, 24.4360, 8.6920



77.7840, 9.5360, 3.3920



43.6340, 10.6790, 21.2310



38.9900, 5.9600, 2.1200



173.0000, -0.0000, 0.0000



46.0000, 0.0000, -0.0000

Same Dimension

The Same Dimension uses a secret algorithm to generate beautiful new colors.



39.2590, 24.4360, 8.6920



44.1360, 38.1440, 13.5680



50.9990, 18.9360, -1.7680



30.8970, 1.7880, 0.6360



29.0030, 57.8120, 20.5640



66.9760, 133.5040, 47.4880

Inverse Universe

The Inverse Universe completely reimagines the original color for something new.



39.2590, 24.4360, 8.6920



44.1360, 38.1440, 13.5680



44.0010, -18.9360, 1.7680



30.8970, 1.7880, 0.6360



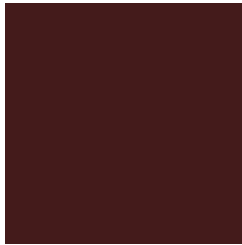
29.0030, 57.8120, 20.5640



66.9760, 133.5040, 47.4880

Previews

White Background



This preview shows how the YIQ color 39.2590, 24.4360, 8.6920 looks on a white background.

Color Contrast Check

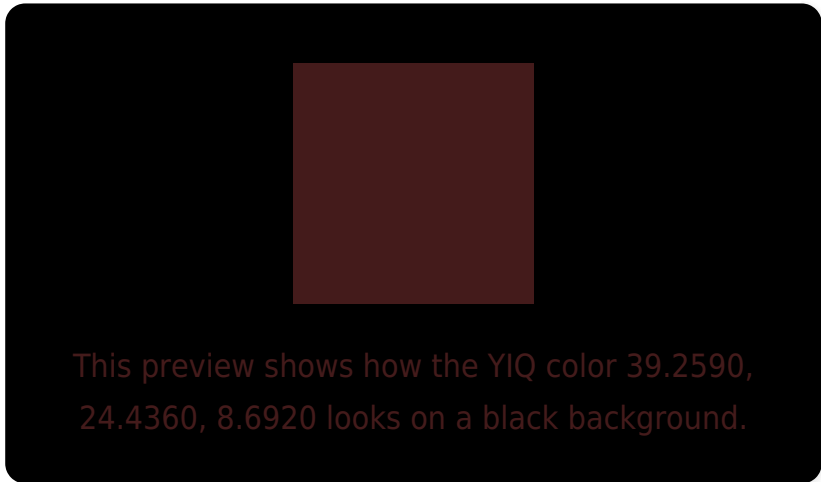
Large Text (above 18pt) WCAG AA ✓ Pass

Any Text WCAG AA ✓ Pass

Large Text (above 18pt) WCAG AAA ✓ Pass

Any Text WCAG AAA ✓ Pass

Black Background



Color Contrast Check

Large Text (above 18pt) WCAG AA × Fail

Any Text WCAG AA × Fail

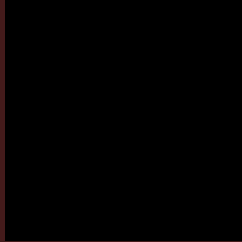
Large Text (above 18pt) WCAG AAA × Fail

Any Text WCAG AAA × Fail

If you want to check with other color combinations, try the [Color Contrast Checker](#).

YIQ 39.2590, 24.4360, 8.6920

Background



This preview shows how black text looks on a background with the YIQ color 39.2590, 24.4360, 8.6920.



This preview shows how white text looks on a background with the YIQ color 39.2590, 24.4360,

Color Blindness Simulation

Color vision deficiency is a very complex topic, and I could not describe the different causes any better than Wikipedia does, so if you want to learn more, you should check out their [article about color blindness](#).

Dichromacy



Original Color

39.2590, 24.4360, 8.6920

Protanopia

40.6860, 3.7600, -2.0640

Deuteranopia

40.3940, 10.4540, -2.2340



Tritanopia

39.3730, 24.1150, 9.0030

Trichromacy



Original Color

39.2590, 24.4360, 8.6920

Protanomaly

40.2140, 11.1410, 1.8370

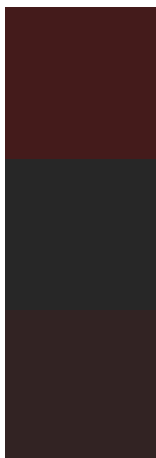
Deuteranomaly

40.2530, 15.4050, 1.6530

Tritanomaly

39.3730, 24.1150, 9.0030

Monochromacy



Original Color

39.2590, 24.4360, 8.6920

Achromatopsia

39.0000, -0.0000, -0.0000

Achromatomaly

39.4850, 8.9400, 3.1800

CSS Examples

Text

The CSS property to change the color of the text to YIQ 39.2590, 24.4360, 8.6920 is called "color". The color property can be set on classes, ids or directly on the HTML element.

This example shows how text in the color `rgb(68, 27, 27)` looks like.

```
.text, #text, p{  
    color:rgb(68, 27, 27)  
}
```

If you want to add a text shadow in that color use the text-shadow property, you can generate a text shadow directly with our [CSS Text Shadow Generator](#).

Here you see how black text with a 4 pixel rgb(68, 27, 27) colored shadow looks like.

```
.shadow{ text-shadow: 4px 4px 2px rgb(68, 27, 27) }
```

Border

The CSS property to change the border of an element to YIQ 39.2590, 24.4360, 8.6920 is called "border". The border property can be set on classes, ids or directly on the HTML element.

This example shows the color as border, it can be applied via the CSS property "border" or "border-color".

```
.border, #border, table{ border:4px solid rgb(68, 27, 27) }
```


If only the border color should be changed use the property `border-color`.

```
.border{ border-color:rgb(68, 27, 27) }
```

If you want to add a box shadow in that color use:

Here you see how a box with a 4 pixel `rgb(68, 27, 27)` colored shadow looks like.

```
.boxshadow{ -moz-box-shadow:4px 4px 4px  
4px rgb(68, 27, 27); -webkit-box-  
shadow:4px 4px 4px 4px rgb(68, 27, 27);  
box-shadow:4px 4px 4px 4px rgb(68, 27, 27)  
}
```

Background

The CSS property to change the background color of an element to YIQ 39.2590, 24.4360, 8.6920 is called "background". The background property can be set on classes, ids or directly on the HTML element.

```
.background, #background, body{  
background: rgb(68, 27, 27) }
```

If only the background color should be changed can be used:

```
.background{ background-color: rgb(68, 27,  
27) }
```

This example shows the color as background, it is applied via the CSS property "background".

To optimize and compress your CSS code, you can use our [online CSS compressor and optimizer](#) based on csstidy. If you want to create a linear or radial gradient as background or border, check our [CSS Gradient Generator](#).

Hey! You found this booklet interesting? Support Converting Colors with the new Membership Option!

The pro membership hides all ads, plus gives you double the colors in the color bucket, and more awesome pro features!

[Learn more, Memberships starting at \\$2.50/m!](#)

**Follow me
on Twitter!**

@ConvertingColor