

Converting Colors

YIQ(40.2710, 24.1620, 2.6420)

Have a look what the booklet for
YIQ(40.2710, 24.1620, 2.6420)
contains.

YIQ(40.2710, 24.1620, 2.6420)	3
<i>Conversions</i>	4
<i>Details</i>	6
<i>Harmonies</i>	12
<i>Previews</i>	24
<i>Color Blindness Simulation</i>	28
<i>CSS Examples</i>	31

Color

**YIQ(40.2710, 24.1620,
2.6420)**

Conversions

Conversions Part 1

Format	Color
Hex	412012
RGB	65, 32, 18
RGB Percent	25%, 13%, 7%
CMY	0.7450, 0.8746, 0.9293
CMYK	0.00, 0.51, 0.72, 0.75
HSL	18°, 57%, 16%
HSV	18°, 72%, 25%
XYZ	2.8067, 2.2005, 0.8502
YIQ	40.2710, 24.1620, 2.6420

Conversions

Conversions Part 2

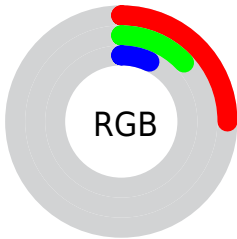
Format	Color
R_{YB}	65, 38, 18
Decimal	4268050
CIE _{Lab}	16.51, 14.43, 16.30
CIE _{LCh}	17, 21.770, 48.471
Yxy	2.2005, 0.4792, 0.3757
Android (android.graphics.Color)	4282458130 (0xFF412012)
YUV	40.2710, -10.9796, 21.6873
Hunter-Lab	14.8340, 7.8141, 6.9854

Details

The YIQ color **40.2710, 24.1620, 2.6420** is a dark color, and the websafe version is hex **663333**. A complement of this color would be **42.7290, -24.1620, -2.6420**, and the grayscale version is **40.0000, 0.0000, -0.0000**.

A 20% lighter version of the original color is **86.7230, 28.7010, 2.9810**, and **0.0000, 0.0000, 0.0000** is the 20% darker color. If you saturate the color by 10%, you get **36.6520, 27.4630, 3.3910**, and if you desaturate by 10%, it is **44.0040, 20.5400, 2.2040**.

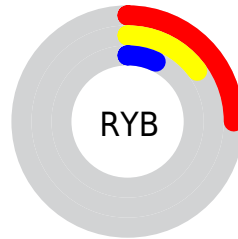
Distribution



 Red (25%)

 Green (13%)

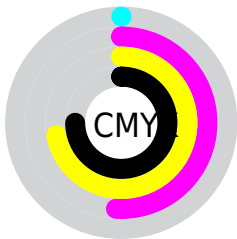
 Blue (7%)



 Red (25%)

 Yellow (15%)

 Blue (7%)

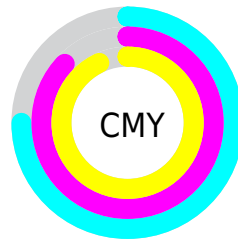


 Cyan (0%)

 Magenta (51%)

 Yellow (72%)

 Black (75%)



 Cyan (75%)

 Magenta (87%)

 Yellow (93%)

Brightness & Saturation Gradients

These gradients show how the YIQ color 40.2710, 24.1620, 2.6420 changes by changing the brightness by 10 percent. The first figure shows a shift by +10% for each color and the second figure -10%.

Similar to the brightness gradients but the following saturation gradients show a change of the YIQ color 40.2710, 24.1620, 2.6420 by changing the saturation by 10% instead.

■ 40.2710, 24.1620,
2.6420

■ 40.2710, 24.1620,
2.6420

■ 253.6320, 3.8520,
-3.7320

■ 19.0150, 22.0070,
3.1510

■ 86.7230, 28.7010,
2.9810

■ 0.0000, 0.0000,
0.0000

■ 111.3210, 29.8930,
3.4050

■ 136.8050, 31.4060,
3.5180

■ 163.2890, 32.9190,
3.6310

■ 190.7730, 34.4320,
3.7440

■ 218.3710, 35.6240,

4.1680

■ 237.9990, 18.9360,
-1.7680

■ 40.2710, 24.1620,
2.6420

■ 40.2710, 24.1620,
2.6420

■ 36.6520, 27.4630,
3.3910

■ 44.0040, 20.5400,
2.2040

■ 33.5060, 30.8100,
3.3060

■ 47.0360, 17.5140,
1.9780

■ 30.5880, 33.5150,
3.8430

■ 50.7690, 13.8920,
1.5400

■ 53.8010, 10.8660,
1.3140

■ 57.5340, 7.2440,
0.8760

■ 60.5660, 4.2180,
0.6500

■ 64.2990, 0.5960,
0.2120

■ 67.9180, -2.7050,
-0.5370

■ 71.0640, -6.0520,
-0.4520

Harmonies

Analogous

The Analogous color harmony consists of three colors that are next to each other on the color wheel.



41.0140, 23.7480, 10.1480



40.2710, 24.1620, 2.6420



39.5490, 20.0830, -6.0370

Triad

The Triadic color harmony groups three colors that are evenly spaced from another and form a triangle on the color wheel.



40.2710, 24.1620, 2.6420



32.0520, -24.1140, -14.5300



40.1420, -14.7190, 7.9450

Complementary

The Complementary color scheme is a pair of colors which are on the opposite of each other on the color wheel.



40.2710, 24.1620, 2.6420



42.7290, -24.1620, -2.6420

Split Complementary

Split-complementary colors differ from the complementary color scheme. The scheme consists of three colors, the original color and two neighbors of the complement color.



33.9220, -34.8910, -0.9310



40.2710, 24.1620, 2.6420



33.8760, -29.2500, -9.5540

Square

The Square scheme is like the rectangle color scheme, but the four colors are evenly spaced on the color wheel.



40.2710, 24.1620, 2.6420



35.7460, -5.6370, -13.4850



34.8850, -33.4690, -4.6770



42.5850, 3.2070, 13.4710

Rectangle

The Rectangle color scheme consists of four colors that form a rectangle on the color wheel.



40.2710, 24.1620, 2.6420



38.5050, 14.2150, -9.8250



34.8850, -33.4690, -4.6770



38.2550, -22.4670, 5.1890

Sweetspot

The Sweet Spot groups the original color and five complimentary colors.



40.2710, 24.1620, 2.6420



74.3170, 9.3530, 1.2010



35.9290, 17.0980, 20.5380



37.0500, 5.7310, 0.7630



171.0000, -0.0000, -0.0000



43.0000, -0.0000, -0.0000

Same Dimension

The Same Dimension uses a secret algorithm to generate beautiful new colors.



40.2710, 24.1620, 2.6420



45.7410, 37.4580, 3.9700



53.7720, 17.8370, -9.3870



31.4840, 1.5130, 0.1130



46.0260, 49.8370, 5.3970



106.3050, 115.0790, 12.4470

Inverse Universe

The Inverse Universe completely reimagines the original color for something new.



42.7290, -24.1620, -2.6420



49.2590, -37.4580, -3.9700



29.2280, -17.8370, 9.3870



31.5160, -1.5130, -0.1130



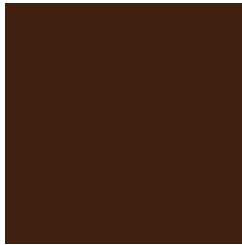
50.9740, -49.8370, -5.3970



118.2820, -115.3540, -12.9700

Previews

White Background



This preview shows how the YIQ color 40.2710, 24.1620, 2.6420 looks on a white background.

Color Contrast Check

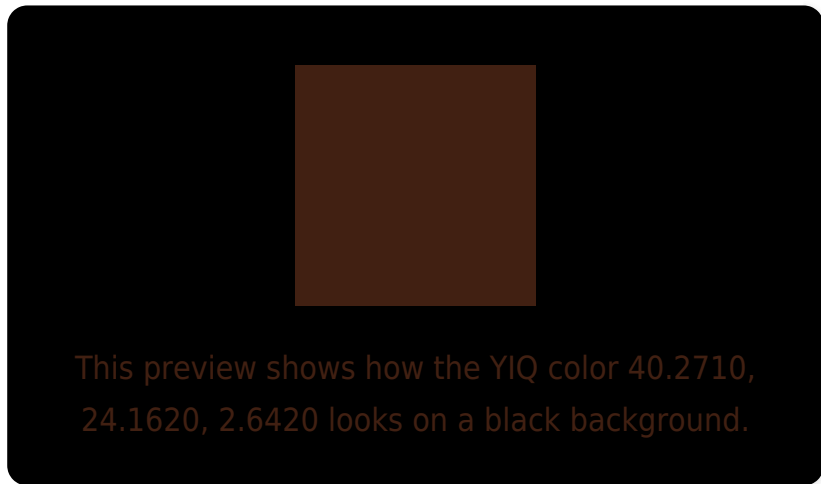
Large Text (above 18pt) WCAG AA ✓ Pass

Any Text WCAG AA ✓ Pass

Large Text (above 18pt) WCAG AAA ✓ Pass

Any Text WCAG AAA ✓ Pass

Black Background



Color Contrast Check

Large Text (above 18pt) WCAG AA × Fail

Any Text WCAG AA × Fail

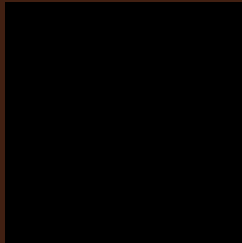
Large Text (above 18pt) WCAG AAA × Fail

Any Text WCAG AAA × Fail

If you want to check with other color combinations, try the [Color Contrast Checker](#).

YIQ 40.2710, 24.1620, 2.6420

Background



This preview shows how black text looks on a background with the YIQ color 40.2710, 24.1620, 2.6420.

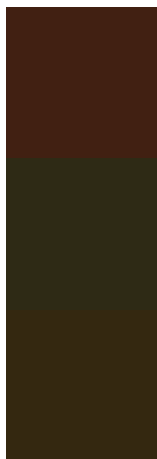


This preview shows how white text looks on a background with the YIQ color 40.2710, 24.1620,

Color Blindness Simulation

Color vision deficiency is a very complex topic, and I could not describe the different causes any better than Wikipedia does, so if you want to learn more, you should check out their [article about color blindness](#).

Dichromacy



Original Color

40.2710, 24.1620, 2.6420

Protanopia

40.8020, 9.1250, -5.6830

Deuteranopia

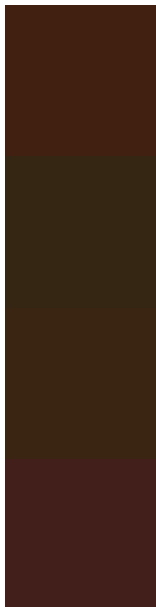
40.8520, 14.8560, -4.9200



Tritanopia

40.9920, 20.8140, 8.2540

Trichromacy



Original Color

40.2710, 24.1620, 2.6420

Protanomaly

40.4330, 14.7180, -2.4180

Deuteranomaly

40.7000, 18.3400, -1.9800

Tritanomaly

41.0090, 22.1440, 6.1760

Monochromacy



Original Color

40.2710, 24.1620, 2.6420

Achromatopsia

40.0000, 0.0000, -0.0000

Achromatomaly

40.0180, 8.7570, 0.9890

CSS Examples

Text

The CSS property to change the color of the text to YIQ 40.2710, 24.1620, 2.6420 is called "color". The color property can be set on classes, ids or directly on the HTML element.

This example shows how text in the color `rgb(65, 32, 18)` looks like.

```
.text, #text, p{  
    color:rgb(65, 32, 18)  
}
```

If you want to add a text shadow in that color use the text-shadow property, you can generate a text shadow directly with our [CSS Text Shadow Generator](#).

Here you see how black text with a 4 pixel rgb(65, 32, 18) colored shadow looks like.

```
.shadow{ text-shadow: 4px 4px 2px rgb(65, 32, 18) }
```

Border

The CSS property to change the border of an element to YIQ 40.2710, 24.1620, 2.6420 is called "border". The border property can be set on classes, ids or directly on the HTML element.

This example shows the color as border, it can be applied via the CSS property "border" or "border-color".

```
.border, #border, table{ border:4px solid rgb(65, 32, 18) }
```


If only the border color should be changed use the property border-color.

```
.border{ border-color:rgb(65, 32, 18) }
```

If you want to add a box shadow in that color use:

Here you see how a box with a 4 pixel rgb(65, 32, 18) colored shadow looks like.

```
.boxshadow{ -moz-box-shadow:4px 4px 4px  
4px rgb(65, 32, 18); -webkit-box-  
shadow:4px 4px 4px 4px rgb(65, 32, 18);  
box-shadow:4px 4px 4px 4px rgb(65, 32, 18)  
}
```

Background

The CSS property to change the background color of an element to YIQ 40.2710, 24.1620, 2.6420 is called "background". The background property can be set on classes, ids or directly on the HTML element.

```
.background, #background, body{  
background: rgb(65, 32, 18) }
```

If only the background color should be changed can be used:

```
.background{ background-color: rgb(65, 32,  
18) }
```

This example shows the color as background, it is applied via the CSS property "background".

To optimize and compress your CSS code, you can use our [online CSS compressor and optimizer](#) based on csstidy. If you want to create a linear or radial gradient as background or border, check our [CSS Gradient Generator](#).

Hey! You found this booklet
interesting? Support Converting
Colors with the new Membership
Option!

The pro membership hides all ads, plus gives you
double the colors in the color bucket, and more
awesome pro features!

[Learn more, Memberships starting at \\$2.50/m!](#)

**Follow me
on Twitter!**

@ConvertingColor