

Converting Colors

YIQ(40.6130, 23.1990, 3.5750)

Have a look what the booklet for
YIQ(40.6130, 23.1990, 3.5750)
contains.

| | |
|--|----|
| YIQ(40.6130, 23.1990, 3.5750) | 3 |
| <i>Conversions</i> | 4 |
| <i>Details</i> | 6 |
| <i>Harmonies</i> | 12 |
| <i>Previews</i> | 24 |
| <i>Color Blindness Simulation</i> | 28 |
| <i>CSS Examples</i> | 31 |

Color

**YIQ(40.6130, 23.1990,
3.5750)**

Conversions

Conversions Part 1

| Format | Color |
|---------------|--------------------------|
| Hex | 412015 |
| RGB | 65, 32, 21 |
| RGB Percent | 25%, 13%, 8% |
| CMY | 0.7450, 0.8746, 0.9175 |
| CMYK | 0.00, 0.51, 0.68, 0.75 |
| HSL | 15°, 51%, 17% |
| HSV | 15°, 68%, 25% |
| XYZ | 2.8329, 2.2110, 0.9882 |
| YIQ | 40.6130, 23.1990, 3.5750 |

Conversions

Conversions Part 2

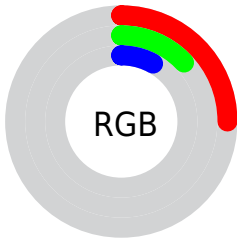
| Format | Color |
|-------------------------------------|------------------------------|
| RYB | 65, 36, 21 |
| Decimal | 4268053 |
| CIELab | 16.56, 14.69, 14.42 |
| CIElCh | 17, 20.583, 44.459 |
| Yxy | 2.2110, 0.4696, 0.3665 |
| Android (android.graphics.Color) | 4282458133 (0xFF412015) |
| YUV | 40.6130, -9.6692, 21.3874 |
| Hunter-Lab | 14.8693, 7.9868, 6.4683 |

Details

The YIQ color **40.6130, 23.1990, 3.5750** is a dark color, and the websafe version is hex **663333**. A complement of this color would be **45.3870, -23.1990, -3.5750**, and the grayscale version is **41.0000, 0.0000, -0.0000**.

A 20% lighter version of the original color is **86.8800, 26.8210, 4.0130**, and **0.0000, 0.0000, 0.0000** is the 20% darker color. If you saturate the color by 10%, you get **36.9940, 26.5000, 4.3240**, and if you desaturate by 10%, it is **44.3460, 19.5770, 3.1370**.

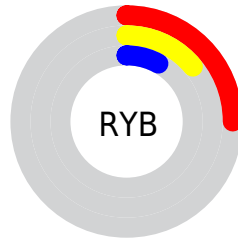
Distribution



 Red (25%)

 Green (13%)

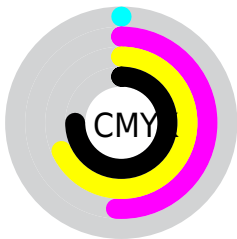
 Blue (8%)



 Red (25%)

 Yellow (14%)

 Blue (8%)

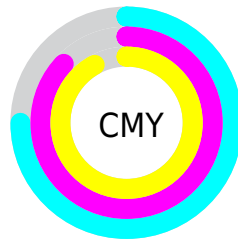


 Cyan (0%)

 Magenta (51%)

 Yellow (68%)

 Black (75%)



 Cyan (75%)

 Magenta (87%)

 Yellow (92%)

Brightness & Saturation Gradients

These gradients show how the YIQ color 40.6130, 23.1990, 3.5750 changes by changing the brightness by 10 percent. The first figure shows a shift by +10% for each color and the second figure -10%.

Similar to the brightness gradients but the following saturation gradients show a change of the YIQ color 40.6130, 23.1990, 3.5750 by changing the saturation by 10% instead.

■ 40.6130, 23.1990,
3.5750

■ 40.6130, 23.1990,
3.5750

■ 253.9740, 2.8890,
-2.7990

■ 19.0150, 22.0070,
3.1510

■ 86.8800, 26.8210,
4.0130

■ 0.0000, 0.0000,
0.0000

■ 111.6630, 28.9300,
4.3380

■ 137.1470, 30.4430,
4.4510

■ 163.7450, 31.6350,
4.8750

■ 190.9300, 32.5520,
4.7760

■ 218.5280, 33.7440,

5.2000

■ 238.4550, 17.6520,
-0.5240

■ 40.6130, 23.1990,
3.5750

■ 40.6130, 23.1990,
3.5750

■ 36.9940, 26.5000,
4.3240

■ 44.3460, 19.5770,
3.1370

■ 33.2610, 30.1220,
4.7620

■ 47.9650, 16.2760,
2.3880

■ 29.6420, 33.4230,
5.5110

■ 51.6980, 12.6540,
1.9500

■ 28.8270, 34.3400,
5.4120

■ 55.3170, 9.3530,
1.2010

■ 58.4630, 6.0060,
1.2860

■ 62.0820, 2.7050,
0.5370

■ 65.8150, -0.9170,
0.0990

■ 69.4340, -4.2180,
-0.6500

■ 73.1670, -7.8400,
-1.0880

Harmonies

Analogous

The Analogous color harmony consists of three colors that are next to each other on the color wheel.



40.6440, 21.9140, 10.3460



40.6130, 23.1990, 3.5750



39.7170, 19.6700, -4.0580

Triad

The Triadic color harmony groups three colors that are evenly spaced from another and form a triangle on the color wheel.



40.6130, 23.1990, 3.5750



32.2370, -23.1970, -14.6290



40.0170, -15.8650, 6.6870

Complementary

The Complementary color scheme is a pair of colors which are on the opposite of each other on the color wheel.



40.6130, 23.1990, 3.5750



45.3870, -23.1990, -3.5750

Split Complementary

Split-complementary colors differ from the complementary color scheme. The scheme consists of three colors, the original color and two neighbors of the complement color.



34.2810, -34.5240, -2.0760



40.6130, 23.1990, 3.5750



33.6480, -28.6080, -10.1760

Square

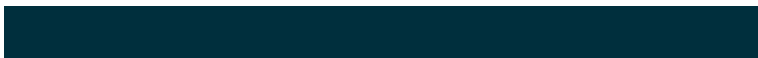
The Square scheme is like the rectangle color scheme, but the four colors are evenly spaced on the color wheel.



40.6130, 23.1990, 3.5750



36.9420, -3.2530, -12.6370



34.5430, -32.5060, -5.6100



42.2750, 1.1440, 12.3120

Rectangle

The Rectangle color scheme consists of four colors that form a rectangle on the color wheel.



40.6130, 23.1990, 3.5750



39.3310, 14.7650, -8.7790



34.5430, -32.5060, -5.6100



38.0160, -23.2920, 3.6200

Sweetspot

The Sweet Spot groups the original color and five complimentary colors.



40.6130, 23.1990, 3.5750



75.0180, 8.7570, 0.9890



38.0320, 15.3100, 19.9020



37.7510, 5.1350, 0.5510



171.0000, -0.0000, -0.0000



43.0000, -0.0000, -0.0000

Same Dimension

The Same Dimension uses a secret algorithm to generate beautiful new colors.



40.6130, 23.1990, 3.5750



46.3110, 35.8530, 5.5250



52.9400, 17.4240, -7.4080



31.4840, 1.5130, 0.1130



43.0910, 51.2120, 8.0120



99.8480, 118.1040, 18.2000

Inverse Universe

The Inverse Universe completely reimagines the original color for something new.



45.3870, -23.1990, -3.5750



53.6890, -35.8530, -5.5250



33.0600, -17.4240, 7.4080



31.5160, -1.5130, -0.1130



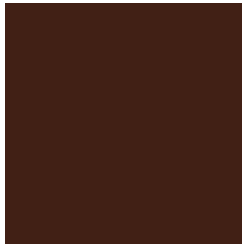
53.9090, -51.2120, -8.0120



124.1520, -118.1040, -18.2000

Previews

White Background



This preview shows how the YIQ color 40.6130, 23.1990, 3.5750 looks on a white background.

Color Contrast Check

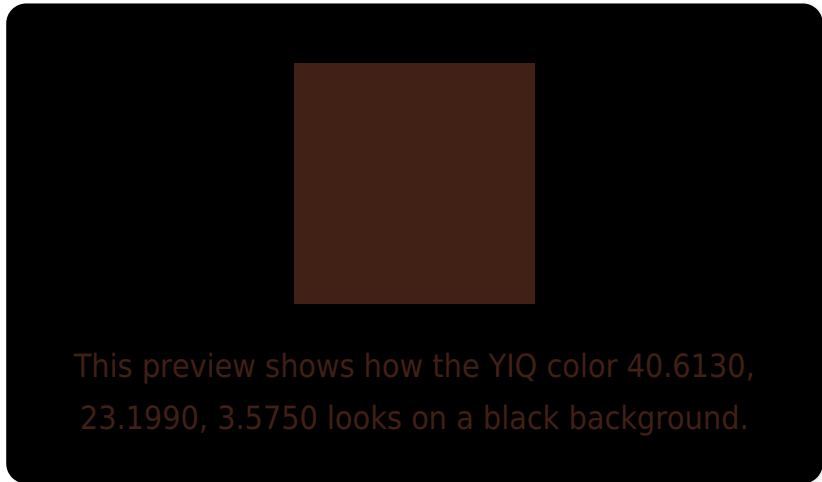
Large Text (above 18pt) WCAG AA ✓ Pass

Any Text WCAG AA ✓ Pass

Large Text (above 18pt) WCAG AAA ✓ Pass

Any Text WCAG AAA ✓ Pass

Black Background



Color Contrast Check

Large Text (above 18pt) WCAG AA × Fail

Any Text WCAG AA × Fail

Large Text (above 18pt) WCAG AAA × Fail

Any Text WCAG AAA × Fail

If you want to check with other color combinations, try the [Color Contrast Checker](#).

YIQ 40.6130, 23.1990, 3.5750

Background



This preview shows how black text looks on a background with the YIQ color 40.6130, 23.1990, 3.5750.

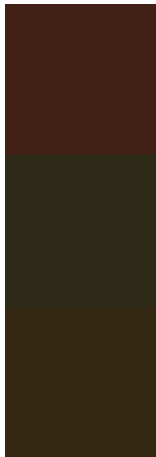


This preview shows how white text looks on a background with the YIQ color 40.6130, 23.1990,

Color Blindness Simulation

Color vision deficiency is a very complex topic, and I could not describe the different causes any better than Wikipedia does, so if you want to learn more, you should check out their [article about color blindness](#).

Dichromacy



Original Color

40.6130, 23.1990, 3.5750

Protanopia

41.1440, 8.1620, -4.7500

Deuteranopia

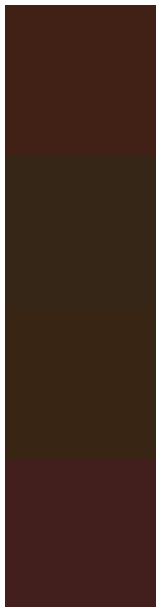
41.1940, 13.8930, -3.9870



Tritanopia

41.6930, 20.2180, 8.0420

Trichromacy



Original Color

40.6130, 23.1990, 3.5750

Protanomaly

40.7750, 13.7550, -1.4850

Deuteranomaly

41.0420, 17.3770, -1.0470

Tritanomaly

41.2370, 21.5020, 6.7980

Monochromacy



Original Color

40.6130, 23.1990, 3.5750

Achromatopsia

41.0000, 0.0000, -0.0000

Achromatomaly

41.1320, 8.4360, 1.3000

CSS Examples

Text

The CSS property to change the color of the text to YIQ 40.6130, 23.1990, 3.5750 is called "color". The color property can be set on classes, ids or directly on the HTML element.

This example shows how text in the color `rgb(65, 32, 21)` looks like.

```
.text, #text, p{  
    color:rgb(65, 32, 21)  
}
```

If you want to add a text shadow in that color use the text-shadow property, you can generate a text shadow directly with our [CSS Text Shadow Generator](#).

Here you see how black text with a 4 pixel rgb(65, 32, 21) colored shadow looks like.

```
.shadow{ text-shadow: 4px 4px 2px rgb(65, 32, 21) }
```

Border

The CSS property to change the border of an element to YIQ 40.6130, 23.1990, 3.5750 is called "border". The border property can be set on classes, ids or directly on the HTML element.

This example shows the color as border, it can be applied via the CSS property "border" or "border-color".

```
.border, #border, table{ border:4px solid rgb(65, 32, 21) }
```


If only the border color should be changed use the property `border-color`.

```
.border{ border-color:rgb(65, 32, 21) }
```

If you want to add a box shadow in that color use:

Here you see how a box with a 4 pixel `rgb(65, 32, 21)` colored shadow looks like.

```
.boxshadow{ -moz-box-shadow:4px 4px 4px  
4px rgb(65, 32, 21); -webkit-box-  
shadow:4px 4px 4px 4px rgb(65, 32, 21);  
box-shadow:4px 4px 4px 4px rgb(65, 32, 21)  
}
```

Background

The CSS property to change the background color of an element to YIQ 40.6130, 23.1990, 3.5750 is called "background". The background property can be set on classes, ids or directly on the HTML element.

```
.background, #background, body{  
background: rgb(65, 32, 21) }
```

If only the background color should be changed can be used:

```
.background{ background-color: rgb(65, 32,  
21) }
```

This example shows the color as background, it is applied via the CSS property "background".

To optimize and compress your CSS code, you can use our [online CSS compressor and optimizer](#) based on csstidy. If you want to create a linear or radial gradient as background or border, check our [CSS Gradient Generator](#).

Hey! You found this booklet interesting? Support Converting Colors with the new Membership Option!

The pro membership hides all ads, plus gives you double the colors in the color bucket, and more awesome pro features!

[Learn more, Memberships starting at \\$2.50/m!](#)

**Follow me
on Twitter!**

@ConvertingColor