

Converting Colors

YIQ(41.0750, 21.7780, 1.7940)

Have a look what the booklet for
YIQ(41.0750, 21.7780, 1.7940)
contains.

YIQ(41.0750, 21.7780, 1.7940)	3
<i>Conversions</i>	4
<i>Details</i>	6
<i>Harmonies</i>	12
<i>Previews</i>	24
<i>Color Blindness Simulation</i>	28
<i>CSS Examples</i>	31

Color

**YIQ(41.0750, 21.7780,
1.7940)**

Conversions

Conversions Part 1

Format	Color
Hex	3F2214
RGB	63, 34, 20
RGB Percent	25%, 13%, 8%
CMY	0.7529, 0.8667, 0.9215
CMYK	0.00, 0.46, 0.68, 0.75
HSL	19°, 52%, 16%
HSV	19°, 68%, 25%
XYZ	2.7490, 2.2512, 0.9526
YIQ	41.0750, 21.7780, 1.7940

Conversions

Conversions Part 2

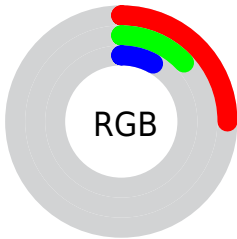
Format	Color
RYB	63, 41, 20
Decimal	4137492
CIELab	16.75, 12.30, 15.26
CIELCh	17, 19.600, 51.133
Yxy	2.2512, 0.4618, 0.3782
Android (android.graphics.Color)	4282327572 (0xFF3F2214)
YUV	41.0750, -10.3900, 19.2282
Hunter-Lab	15.0041, 6.4477, 6.7385

Details

The YIQ color **41.0750, 21.7780, 1.7940** is a dark color, and the websafe version is hex **663333**. A complement of this color would be **41.9250, -21.7780, -1.7940**, and the grayscale version is **41.0000, 0.0000, -0.0000**.

A 20% lighter version of the original color is **87.3420, 25.4000, 2.2320**, and **0.0000, 0.0000, 0.0000** is the 20% darker color. If you saturate the color by 10%, you get **38.0430, 24.8040, 2.0200**, and if you desaturate by 10%, it is **44.1070, 18.7520, 1.5680**.

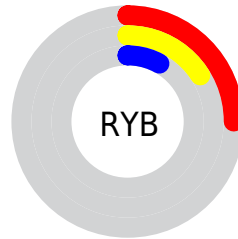
Distribution



Red (25%)

Green (13%)

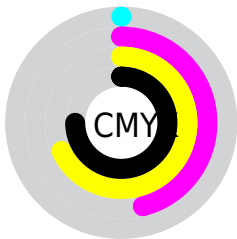
Blue (8%)



Red (25%)

Yellow (16%)

Blue (8%)

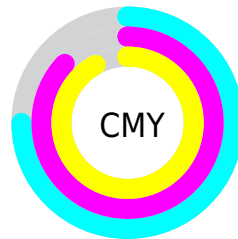


Cyan (0%)

Magenta (46%)

Yellow (68%)

Black (75%)



Cyan (75%)

Magenta (87%)

Yellow (92%)

Brightness & Saturation Gradients

These gradients show how the YIQ color 41.0750, 21.7780, 1.7940 changes by changing the brightness by 10 percent. The first figure shows a shift by +10% for each color and the second figure -10%.

Similar to the brightness gradients but the following saturation gradients show a change of the YIQ color 41.0750, 21.7780, 1.7940 by changing the saturation by 10% instead.

■ 41.0750, 21.7780,
1.7940

■ 41.0750, 21.7780,
1.7940

■ 253.8600, 3.2100,
-3.1100

■ 19.5910, 20.2650,
1.6810

■ 87.3420, 25.4000,
2.2320

■ 0.0000, 0.0000,
0.0000

■ 111.8260, 26.9130,
2.3450

■ 137.3100, 28.4260,
2.4580

■ 163.9080, 29.6180,
2.8820

■ 191.0930, 30.5350,
2.7830

■ 218.6910, 31.7270,

3.2070

■ 240.1020, 17.1480,
-2.4040

■ 41.0750, 21.7780,
1.7940

■ 41.0750, 21.7780,
1.7940

■ 38.0430, 24.8040,
2.0200

■ 44.1070, 18.7520,
1.5680

■ 34.3100, 28.4260,
2.4580

■ 47.2530, 15.4050,
1.6530

■ 31.2780, 31.4520,
2.6840

■ 50.8720, 12.1040,
0.9040

■ 30.5770, 32.0480,
2.8960

■ 53.9040, 9.0780,
0.6780

■ 57.0500, 5.7310,
0.7630

■ 60.6690, 2.4300,
0.0140

■ 63.7010, -0.5960,
-0.2120

■ 66.7330, -3.6220,
-0.4380

■ 69.8790, -6.9690,
-0.3530

Harmonies

Analogous

The Analogous color harmony consists of three colors that are next to each other on the color wheel.



41.5900, 22.0060, 8.6780



41.0750, 21.7780, 1.7940



40.1080, 17.0110, -5.4290

Triad

The Triadic color harmony groups three colors that are evenly spaced from another and form a triangle on the color wheel.



41.0750, 21.7780, 1.7940



32.3940, -25.0770, -13.5970



41.2950, -10.7760, 8.0720

Complementary

The Complementary color scheme is a pair of colors which are on the opposite of each other on the color wheel.



41.0750, 21.7780, 1.7940



41.9250, -21.7780, -1.7940

Split Complementary

Split-complementary colors differ from the complementary color scheme. The scheme consists of three colors, the original color and two neighbors of the complement color.



34.5910, -32.4610, -0.9170



41.0750, 21.7780, 1.7940



33.9900, -29.5710, -9.2430

Square

The Square scheme is like the rectangle color scheme, but the four colors are evenly spaced on the color wheel.



41.0750, 21.7780, 1.7940



37.0880, -6.6000, -12.5520



34.7710, -33.1480, -4.9880



43.1290, 4.4910, 12.2270

Rectangle

The Rectangle color scheme consists of four colors that form a rectangle on the color wheel.



41.0750, 21.7780, 1.7940



39.4770, 11.4180, -8.6940



34.7710, -33.1480, -4.9880



40.0060, -17.3320, 5.7400

Sweetspot

The Sweet Spot groups the original color and five complimentary colors.



41.0750, 21.7780, 1.7940



73.6050, 8.4820, 0.4660



36.1630, 16.3190, 18.1350



35.7510, 5.1350, 0.5510



168.0000, -0.0000, -0.0000



41.0000, 0.0000, -0.0000

Same Dimension

The Same Dimension uses a secret algorithm to generate beautiful new colors.



41.0750, 21.7780, 1.7940



47.3600, 34.1570, 3.2210



53.4020, 16.0030, -9.1890



29.4840, 1.5130, 0.1130



46.3030, 47.4990, 3.7150



108.6420, 112.5120, 9.4080

Inverse Universe

The Inverse Universe completely reimagines the original color for something new.



41.9250, -21.7780, -1.7940



49.0530, -33.8820, -2.6980



29.5980, -16.0030, 9.1890



29.5160, -1.5130, -0.1130



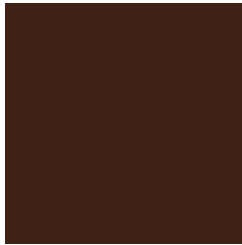
48.2840, -47.7740, -4.2380



113.3580, -112.5120, -9.4080

Previews

White Background



This preview shows how the YIQ color 41.0750, 21.7780, 1.7940 looks on a white background.

Color Contrast Check

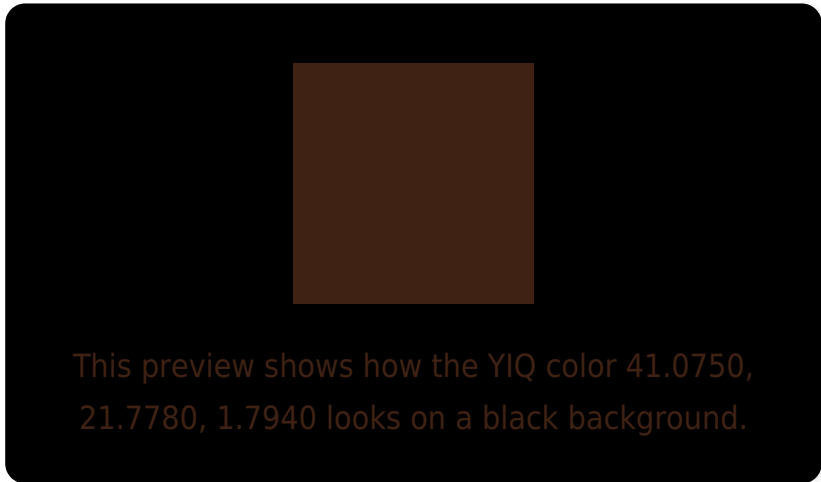
Large Text (above 18pt) WCAG AA ✓ Pass

Any Text WCAG AA ✓ Pass

Large Text (above 18pt) WCAG AAA ✓ Pass

Any Text WCAG AAA ✓ Pass

Black Background



Color Contrast Check

Large Text (above 18pt) WCAG AA × Fail

Any Text WCAG AA × Fail

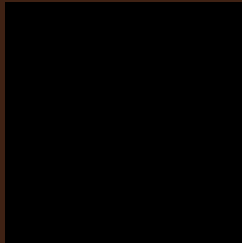
Large Text (above 18pt) WCAG AAA × Fail

Any Text WCAG AAA × Fail

If you want to check with other color combinations, try the [Color Contrast Checker](#).

YIQ 41.0750, 21.7780, 1.7940

Background



This preview shows how black text looks on a background with the YIQ color 41.0750, 21.7780, 1.7940.

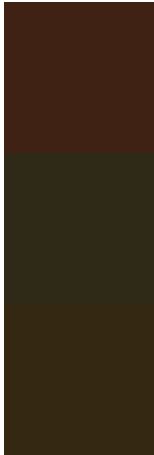


This preview shows how white text looks on a background with the YIQ color 41.0750, 21.7780,

Color Blindness Simulation

Color vision deficiency is a very complex topic, and I could not describe the different causes any better than Wikipedia does, so if you want to learn more, you should check out their [article about color blindness](#).

Dichromacy



Original Color

41.0750, 21.7780, 1.7940

Protanopia

41.0300, 8.4830, -5.0610

Deuteranopia

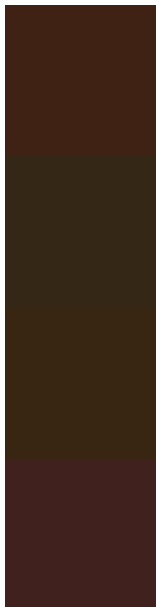
41.1940, 13.8930, -3.9870



Tritanopia

41.9100, 18.1090, 7.7170

Trichromacy



Original Color

41.0750, 21.7780, 1.7940

Protanomaly

40.9490, 13.2050, -2.5310

Deuteranomaly

41.2160, 16.8270, -2.0930

Tritanomaly

41.9270, 19.4390, 5.6390

Monochromacy



Original Color

41.0750, 21.7780, 1.7940

Achromatopsia

41.0000, 0.0000, -0.0000

Achromatomaly

40.7190, 8.1610, 0.7770

CSS Examples

Text

The CSS property to change the color of the text to YIQ 41.0750, 21.7780, 1.7940 is called "color". The color property can be set on classes, ids or directly on the HTML element.

This example shows how text in the color `rgb(63, 34, 20)` looks like.

```
.text, #text, p{  
    color:rgb(63, 34, 20)  
}
```

If you want to add a text shadow in that color use the text-shadow property, you can generate a text shadow directly with our [CSS Text Shadow Generator](#).

Here you see how black text with a 4 pixel rgb(63, 34, 20) colored shadow looks like.

```
.shadow{ text-shadow: 4px 4px 2px rgb(63, 34, 20) }
```

Border

The CSS property to change the border of an element to YIQ 41.0750, 21.7780, 1.7940 is called "border". The border property can be set on classes, ids or directly on the HTML element.

This example shows the color as border, it can be applied via the CSS property "border" or "border-color".

```
.border, #border, table{ border:4px solid rgb(63, 34, 20) }
```


If only the border color should be changed use the property `border-color`.

```
.border{ border-color:rgb(63, 34, 20) }
```

If you want to add a box shadow in that color use:

Here you see how a box with a 4 pixel `rgb(63, 34, 20)` colored shadow looks like.

```
.boxshadow{ -moz-box-shadow:4px 4px 4px  
4px rgb(63, 34, 20); -webkit-box-  
shadow:4px 4px 4px 4px rgb(63, 34, 20);  
box-shadow:4px 4px 4px 4px rgb(63, 34, 20)  
}
```

Background

The CSS property to change the background color of an element to YIQ 41.0750, 21.7780, 1.7940 is called "background". The background property can be set on classes, ids or directly on the HTML element.

```
.background, #background, body{  
background: rgb(63, 34, 20) }
```

If only the background color should be changed can be used:

```
.background{ background-color: rgb(63, 34,  
20) }
```

This example shows the color as background, it is applied via the CSS property "background".

To optimize and compress your CSS code, you can use our [online CSS compressor and optimizer](#) based on csstidy. If you want to create a linear or radial gradient as background or border, check our [CSS Gradient Generator](#).

Hey! You found this booklet
interesting? Support Converting
Colors with the new Membership
Option!

The pro membership hides all ads, plus gives you
double the colors in the color bucket, and more
awesome pro features!

[Learn more, Memberships starting at \\$2.50/m!](#)

**Follow me
on Twitter!**

@ConvertingColor