

Converting Colors

YIQ(41.6230, 17.2390, 1.4550)

Have a look what the booklet for
YIQ(41.6230, 17.2390, 1.4550)
contains.

YIQ(41.6230, 17.2390, 1.4550)	3
<i>Conversions</i>	4
<i>Details</i>	6
<i>Harmonies</i>	12
<i>Previews</i>	24
<i>Color Blindness Simulation</i>	28
<i>CSS Examples</i>	31

Color

**YIQ(41.6230, 17.2390,
1.4550)**

Conversions

Conversions Part 1

Format	Color
Hex	3B2419
RGB	59, 36, 25
RGB Percent	23%, 14%, 10%
CMY	0.7686, 0.8589, 0.9019
CMYK	0.00, 0.39, 0.58, 0.77
HSL	19°, 40%, 16%
HSV	19°, 58%, 23%
XYZ	2.6106, 2.2616, 1.2198
YIQ	41.6230, 17.2390, 1.4550

Conversions

Conversions Part 2

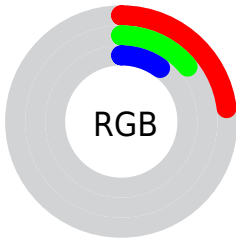
Format	Color
R_{YB}	59, 41, 25
Decimal	3875865
CIE Lab	16.80, 9.46, 11.81
CIE LCh	17, 15.131, 51.297
Yxy	2.2616, 0.4285, 0.3712
Android (android.graphics.Color)	4282065945 (0xFF3B2419)
YUV	41.6230, -8.1951, 15.2396
Hunter-Lab	15.0387, 4.6688, 5.7182

Details

The YIQ color **41.6230, 17.2390, 1.4550** is a dark color, and the websafe version is hex **333333**. A complement of this color would be **42.3770, -17.2390, -1.4550**, and the grayscale version is **42.0000, -0.0000, -0.0000**.

A 20% lighter version of the original color is **87.5910, 20.2650, 1.6810**, and **0.0000, 0.0000, 0.0000** is the 20% darker color. If you saturate the color by 10%, you get **38.5910, 20.2650, 1.6810**, and if you desaturate by 10%, it is **44.6550, 14.2130, 1.2290**.

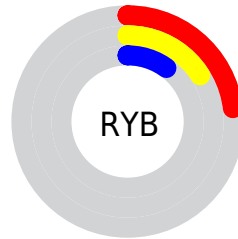
Distribution



Red (23%)

Green (14%)

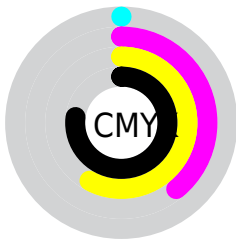
Blue (10%)



Red (23%)

Yellow (16%)

Blue (10%)

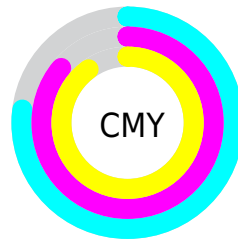


Cyan (0%)

Magenta (39%)

Yellow (58%)

Black (77%)



Cyan (77%)

Magenta (86%)

Yellow (90%)

Brightness & Saturation Gradients

These gradients show how the YIQ color 41.6230, 17.2390, 1.4550 changes by changing the brightness by 10 percent. The first figure shows a shift by +10% for each color and the second figure -10%.

Similar to the brightness gradients but the following saturation gradients show a change of the YIQ color 41.6230, 17.2390, 1.4550 by changing the saturation by 10% instead.

■ 41.6230, 17.2390,
1.4550

■ 41.6230, 17.2390,
1.4550

■ 254.6580, 0.9630,
-0.9330

■ 20.1670, 18.5230,
0.2110

■ 87.5910, 20.2650,
1.6810

■ 0.0000, 0.0000,
0.0000

■ 112.1890, 21.4570,
2.1050

■ 137.3740, 22.3740,
2.0060

■ 163.9720, 23.5660,
2.4300

■ 191.1570, 24.4830,
2.3310

■ 219.0430, 24.8040,

2.0200

■ 241.9600, 14.6720,
-1.5840

■ 41.6230, 17.2390,
1.4550

■ 41.6230, 17.2390,
1.4550

■ 38.5910, 20.2650,
1.6810

■ 44.6550, 14.2130,
1.2290

■ 35.5590, 23.2910,
1.9070

■ 47.6870, 11.1870,
1.0030

■ 32.5270, 26.3170,
2.1330

■ 50.7190, 8.1610,
0.7770

■ 29.4950, 29.3430,
2.3590

■ 53.7510, 5.1350,
0.5510

■ 28.7940, 29.9390,
2.5710

■ 56.7830, 2.1090,
0.3250

■ 59.7010, -0.5960,
-0.2120

■ 62.7330, -3.6220,
-0.4380

■ 65.7650, -6.6480,
-0.6640

■ 68.7970, -9.6740,
-0.8900

Harmonies

Analogous

The Analogous color harmony consists of three colors that are next to each other on the color wheel.



41.7850, 16.9630, 6.4590



41.6230, 17.2390, 1.4550



41.0090, 12.9760, -3.8880

Triad

The Triadic color harmony groups three colors that are evenly spaced from another and form a triangle on the color wheel.



41.6230, 17.2390, 1.4550



35.8080, -17.3750, -10.0070



41.9100, -8.2540, 6.4180

Complementary

The Complementary color scheme is a pair of colors which are on the opposite of each other on the color wheel.



41.6230, 17.2390, 1.4550



42.3770, -17.2390, -1.4550

Split Complementary

Split-complementary colors differ from the complementary color scheme. The scheme consists of three colors, the original color and two neighbors of the complement color.



38.1040, -20.7240, 1.1320



41.6230, 17.2390, 1.4550



33.1750, -28.6540, -9.3420

Square

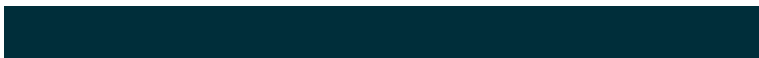
The Square scheme is like the rectangle color scheme, but the four colors are evenly spaced on the color wheel.



41.6230, 17.2390, 1.4550



38.5660, -4.9500, -9.4140



33.6140, -31.2680, -6.0200



42.9500, 3.4370, 9.3010

Rectangle

The Rectangle color scheme consists of four colors that form a rectangle on the color wheel.



41.6230, 17.2390, 1.4550



40.0900, 8.2540, -6.4180



33.6140, -31.2680, -6.0200



40.8170, -12.4260, 4.9340

Sweetspot

The Sweet Spot groups the original color and five complimentary colors.



41.6230, 17.2390, 1.4550



70.1210, 6.9690, 0.3530



37.7880, 12.8810, 14.3610



34.2670, 3.6220, 0.4380



166.0000, -0.0000, 0.0000



38.0000, -0.0000, -0.0000

Same Dimension

The Same Dimension uses a secret algorithm to generate beautiful new colors.



41.6230, 17.2390, 1.4550



49.8260, 26.9130, 2.3450



51.6020, 12.5640, -7.4360



29.4840, 1.5130, 0.1130



45.7160, 47.7740, 4.2380



108.6420, 112.5120, 9.4080

Inverse Universe

The Inverse Universe completely reimagines the original color for something new.



42.3770, -17.2390, -1.4550



50.5870, -26.6380, -1.8220



32.3980, -12.5640, 7.4360



29.5160, -1.5130, -0.1130



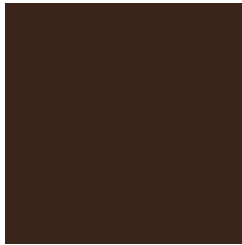
48.2840, -47.7740, -4.2380



113.3580, -112.5120, -9.4080

Previews

White Background



This preview shows how the YIQ color 41.6230, 17.2390, 1.4550 looks on a white background.

Color Contrast Check

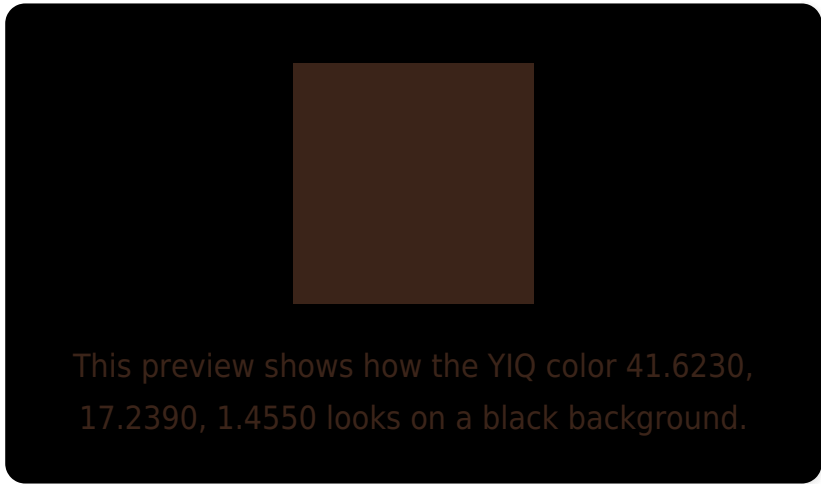
Large Text (above 18pt) WCAG AA ✓ Pass

Any Text WCAG AA ✓ Pass

Large Text (above 18pt) WCAG AAA ✓ Pass

Any Text WCAG AAA ✓ Pass

Black Background



Color Contrast Check

Large Text (above 18pt) WCAG AA × Fail

Any Text WCAG AA × Fail

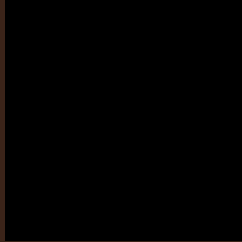
Large Text (above 18pt) WCAG AAA × Fail

Any Text WCAG AAA × Fail

If you want to check with other color combinations, try the [Color Contrast Checker](#).

YIQ 41.6230, 17.2390, 1.4550

Background



This preview shows how black text looks on a background with the YIQ color 41.6230, 17.2390, 1.4550.

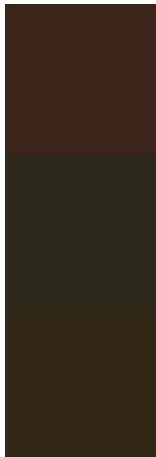


This preview shows how white text looks on a background with the YIQ color 41.6230, 17.2390,

Color Blindness Simulation

Color vision deficiency is a very complex topic, and I could not describe the different causes any better than Wikipedia does, so if you want to learn more, you should check out their [article about color blindness](#).

Dichromacy



Original Color

41.6230, 17.2390, 1.4550

Protanopia

41.4860, 7.1990, -3.8170

Deuteranopia

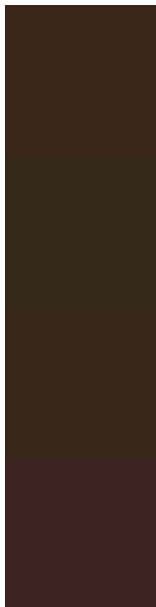
41.4650, 11.6920, -2.6440



Tritanopia

42.1160, 14.5330, 6.4450

Trichromacy



Original Color

41.6230, 17.2390, 1.4550

Protanomaly

41.6930, 11.0500, -2.0220

Deuteranomaly

41.7750, 13.7550, -1.4850

Tritanomaly

42.2470, 15.5420, 4.6780

Monochromacy



Original Color

41.6230, 17.2390, 1.4550

Achromatopsia

42.0000, -0.0000, -0.0000

Achromatomaly

41.9360, 6.0520, 0.4520

CSS Examples

Text

The CSS property to change the color of the text to YIQ 41.6230, 17.2390, 1.4550 is called "color". The color property can be set on classes, ids or directly on the HTML element.

This example shows how text in the color `rgb(59, 36, 25)` looks like.

```
.text, #text, p{  
    color:rgb(59, 36, 25)  
}
```

If you want to add a text shadow in that color use the text-shadow property, you can generate a text shadow directly with our [CSS Text Shadow Generator](#).

Here you see how black text with a 4 pixel rgb(59, 36, 25) colored shadow looks like.

```
.shadow{ text-shadow: 4px 4px 2px rgb(59, 36, 25) }
```

Border

The CSS property to change the border of an element to YIQ 41.6230, 17.2390, 1.4550 is called "border". The border property can be set on classes, ids or directly on the HTML element.

This example shows the color as border, it can be applied via the CSS property "border" or "border-color".

```
.border, #border, table{ border:4px solid rgb(59, 36, 25) }
```


If only the border color should be changed use the property `border-color`.

```
.border{ border-color:rgb(59, 36, 25) }
```

If you want to add a box shadow in that color use:

Here you see how a box with a 4 pixel `rgb(59, 36, 25)` colored shadow looks like.

```
.boxshadow{ -moz-box-shadow:4px 4px 4px  
4px rgb(59, 36, 25); -webkit-box-  
shadow:4px 4px 4px 4px rgb(59, 36, 25);  
box-shadow:4px 4px 4px 4px rgb(59, 36, 25)  
}
```

Background

The CSS property to change the background color of an element to YIQ 41.6230, 17.2390, 1.4550 is called "background". The background property can be set on classes, ids or directly on the HTML element.

```
.background, #background, body{  
background: rgb(59, 36, 25) }
```

If only the background color should be changed can be used:

```
.background{ background-color: rgb(59, 36,  
25) }
```

This example shows the color as background, it is applied via the CSS property "background".

To optimize and compress your CSS code, you can use our [online CSS compressor and optimizer](#) based on csstidy. If you want to create a linear or radial gradient as background or border, check our [CSS Gradient Generator](#).

Hey! You found this booklet interesting? Support Converting Colors with the new Membership Option!

The pro membership hides all ads, plus gives you double the colors in the color bucket, and more awesome pro features!

[Learn more, Memberships starting at \\$2.50/m!](#)

**Follow me
on Twitter!**

@ConvertingColor