

Converting Colors

YIQ(42.1550, 18.7970, 6.2610)

Have a look what the booklet for
YIQ(42.1550, 18.7970, 6.2610)
contains.

YIQ(42.1550, 18.7970, 6.2610)	3
<i>Conversions</i>	4
<i>Details</i>	6
<i>Harmonies</i>	12
<i>Previews</i>	24
<i>Color Blindness Simulation</i>	28
<i>CSS Examples</i>	31

Color

**YIQ(42.1550, 18.7970,
6.2610)**

Conversions

Conversions Part 1

Format	Color
Hex	402120
RGB	64, 33, 32
RGB Percent	25%, 13%, 13%
CMY	0.7489, 0.8706, 0.8744
CMYK	0.00, 0.48, 0.50, 0.75
HSL	2°, 33%, 19%
HSV	2°, 50%, 25%
XYZ	2.9200, 2.2820, 1.6544
YIQ	42.1550, 18.7970, 6.2610

Conversions

Conversions Part 2

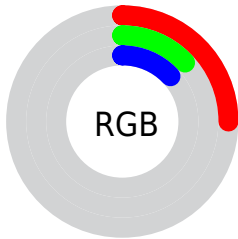
Format	Color
RYB	64, 33, 32
Decimal	4202784
CIELab	16.90, 14.78, 7.19
CIELCh	17, 16.434, 25.952
Yxy	2.2820, 0.4259, 0.3328
Android (android.graphics.Color)	4282392864 (0xFF402120)
YUV	42.1550, -5.0064, 19.1581
Hunter-Lab	15.1063, 8.0680, 4.0810

Details

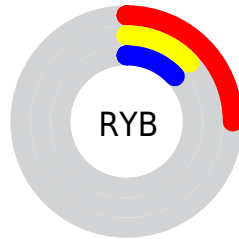
The YIQ color **42.1550, 18.7970, 6.2610** is a dark color, and the websafe version is hex **663333**. A complement of this color would be **53.8450, -18.7970, -6.2610**, and the grayscale version is **42.0000, -0.0000, -0.0000**.

A 20% lighter version of the original color is **88.2370, 21.5020, 6.7980**, and **1.1960, 2.3840, 0.8480** is the 20% darker color. If you saturate the color by 10%, you get **37.9490, 22.3730, 7.5330**, and if you desaturate by 10%, it is **46.3610, 15.2210, 4.9890**.

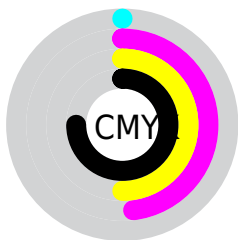
Distribution



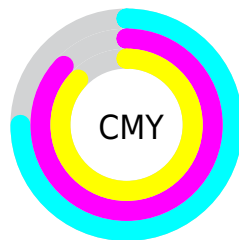
- Red (25%)
- Green (13%)
- Blue (13%)



- Red (25%)
- Yellow (13%)
- Blue (13%)



- Cyan (0%)
- Magenta (48%)
- Yellow (50%)
- Black (75%)



- Cyan (75%)
- Magenta (87%)
- Yellow (87%)

Brightness & Saturation Gradients

These gradients show how the YIQ color 42.1550, 18.7970, 6.2610 changes by changing the brightness by 10 percent. The first figure shows a shift by +10% for each color and the second figure -10%.

Similar to the brightness gradients but the following saturation gradients show a change of the YIQ color 42.1550, 18.7970, 6.2610 by changing the saturation by 10% instead.

■ 42.1550, 18.7970,
6.2610

■ 42.1550, 18.7970,
6.2610

■ 255.0000, -0.0000,
-0.0000

■ 20.2150, 18.5680,
4.9040

■ 88.2370, 21.5020,
6.7980

■ 1.1960, 2.3840,
0.8480

■ 113.1340, 23.2900,
7.4340

■ 0.0000, 0.0000,
0.0000

■ 138.4330, 23.8860,
7.6460

■ 164.9170, 25.3990,
7.7590

■ 192.2160, 25.9950,
7.9710

■ 220.5150, 26.5910,

8.1830

241.3390, 12.2870,
3.0950

42.1550, 18.7970,
6.2610

42.1550, 18.7970,
6.2610

37.9490, 22.3730,
7.5330

46.3610, 15.2210,
4.9890

33.6290, 26.2700,
8.4940

50.6810, 11.3240,
4.0280

28.8360, 30.1210,
10.2890

55.4740, 7.4730,
2.2330

24.5160, 34.0180,
11.2500

59.7940, 3.5760,
1.2720

20.3100, 37.5940,
12.5220

64.0000, -0.0000,
-0.0000

■ 68.2060, -3.5760,
-1.2720

■ 72.5260, -7.4730,
-2.2330

■ 77.3190, -11.3240,
-4.0280

■ 81.6390, -15.2210,
-4.9890

Harmonies

Analogous

The Analogous color harmony consists of three colors that are next to each other on the color wheel.



42.6370, 14.6240, 10.3040



42.1550, 18.7970, 6.2610



41.3950, 17.8810, 0.8330

Triad

The Triadic color harmony groups three colors that are evenly spaced from another and form a triangle on the color wheel.



42.1550, 18.7970, 6.2610



38.2560, -7.0130, -10.5730



38.6310, -20.7700, 1.9660

Complementary

The Complementary color scheme is a pair of colors which are on the opposite of each other on the color wheel.



42.1550, 18.7970, 6.2610



53.8450, -18.7970, -6.2610

Split Complementary

Split-complementary colors differ from the complementary color scheme. The scheme consists of three colors, the original color and two neighbors of the complement color.



33.9560, -32.2310, -5.0870



42.1550, 18.7970, 6.2610



34.5300, -22.4640, -11.3920

Square

The Square scheme is like the rectangle color scheme, but the four colors are evenly spaced on the color wheel.



42.1550, 18.7970, 6.2610



39.7690, 4.7240, -8.5240



34.1040, -29.8920, -8.9320



42.0350, -7.1080, 7.6760

Rectangle

The Rectangle color scheme consists of four colors that form a rectangle on the color wheel.



42.1550, 18.7970, 6.2610



41.2050, 15.3600, -3.0400



34.1040, -29.8920, -8.9320



36.4130, -26.0880, -0.7760

Sweetspot

The Sweet Spot groups the original color and five complimentary colors.



42.1550, 18.7970, 6.2610



75.5880, 7.1520, 2.5440



45.1020, 9.1210, 16.4250



38.0930, 4.1720, 1.4840



171.0000, -0.0000, -0.0000



43.0000, -0.0000, -0.0000

Same Dimension

The Same Dimension uses a secret algorithm to generate beautiful new colors.



42.1550, 18.7970, 6.2610



49.5370, 29.5250, 10.0770



51.5470, 14.3970, -2.1070



30.8970, 1.7880, 0.6360



30.7640, 56.9870, 18.9950



71.0850, 131.5790, 43.8270

Inverse Universe

The Inverse Universe completely reimagines the original color for something new.



53.8450, -18.7970, -6.2610



68.4630, -29.5250, -10.0770



44.4530, -14.3970, 2.1070



32.1030, -1.7880, -0.6360



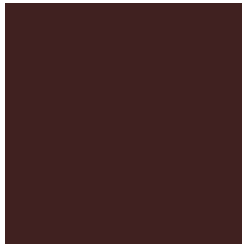
66.2360, -56.9870, -18.9950



153.5020, -131.8540, -44.3500

Previews

White Background



This preview shows how the YIQ color 42.1550, 18.7970, 6.2610 looks on a white background.

Color Contrast Check

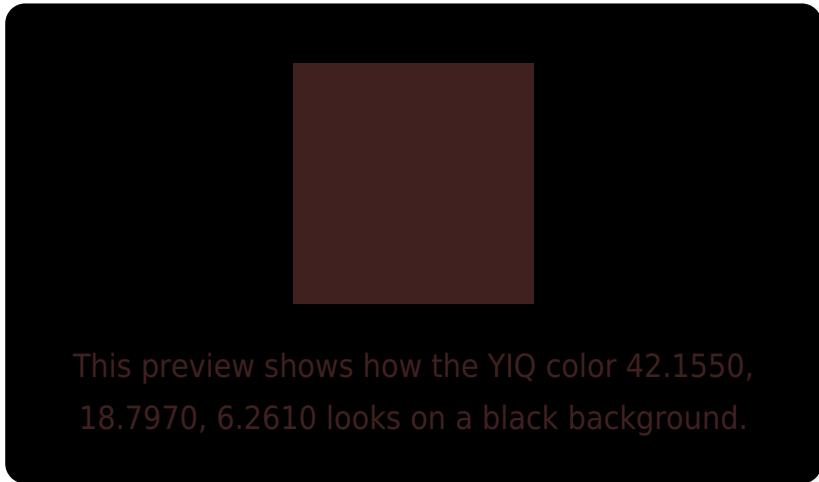
Large Text (above 18pt) WCAG AA ✓ Pass

Any Text WCAG AA ✓ Pass

Large Text (above 18pt) WCAG AAA ✓ Pass

Any Text WCAG AAA ✓ Pass

Black Background



Color Contrast Check

Large Text (above 18pt) WCAG AA × Fail

Any Text WCAG AA × Fail

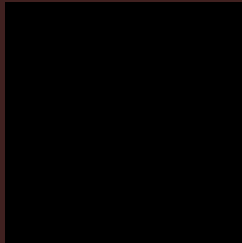
Large Text (above 18pt) WCAG AAA × Fail

Any Text WCAG AAA × Fail

If you want to check with other color combinations, try the [Color Contrast Checker](#).

YIQ 42.1550, 18.7970, 6.2610

Background



This preview shows how black text looks on a background with the YIQ color 42.1550, 18.7970, 6.2610.



This preview shows how white text looks on a background with the YIQ color 42.1550, 18.7970,

Color Blindness Simulation

Color vision deficiency is a very complex topic, and I could not describe the different causes any better than Wikipedia does, so if you want to learn more, you should check out their [article about color blindness](#).

Dichromacy



Original Color

42.1550, 18.7970, 6.2610

Protanopia

41.9140, 3.1180, -1.4420

Deuteranopia

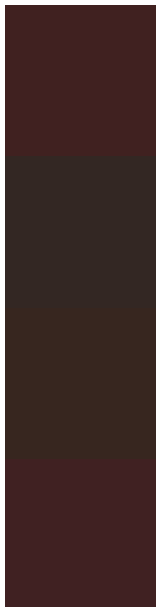
42.5510, 8.5740, -1.2020



Tritanopia

42.4970, 17.8340, 7.1940

Trichromacy



Original Color

42.1550, 18.7970, 6.2610

Protanomaly

42.1320, 8.4360, 1.3000

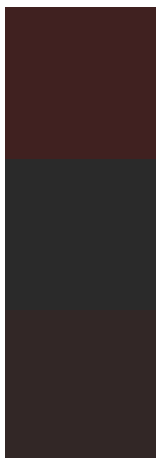
Deuteranomaly

42.2850, 12.3790, 1.4270

Tritanomaly

42.3830, 18.1550, 6.8830

Monochromacy



Original Color

42.1550, 18.7970, 6.2610

Achromatopsia

42.0000, -0.0000, -0.0000

Achromatomaly

42.1750, 6.8770, 2.0210

CSS Examples

Text

The CSS property to change the color of the text to YIQ 42.1550, 18.7970, 6.2610 is called "color". The color property can be set on classes, ids or directly on the HTML element.

This example shows how text in the color `rgb(64, 33, 32)` looks like.

```
.text, #text, p{  
    color:rgb(64, 33, 32)  
}
```

If you want to add a text shadow in that color use the text-shadow property, you can generate a text shadow directly with our [CSS Text Shadow Generator](#).

Here you see how black text with a 4 pixel rgb(64, 33, 32) colored shadow looks like.

```
.shadow{ text-shadow: 4px 4px 2px rgb(64, 33, 32) }
```

Border

The CSS property to change the border of an element to YIQ 42.1550, 18.7970, 6.2610 is called "border". The border property can be set on classes, ids or directly on the HTML element.

This example shows the color as border, it can be applied via the CSS property "border" or "border-color".

```
.border, #border, table{ border:4px solid rgb(64, 33, 32) }
```


If only the border color should be changed use the property `border-color`.

```
.border{ border-color:rgb(64, 33, 32) }
```

If you want to add a box shadow in that color use:

Here you see how a box with a 4 pixel `rgb(64, 33, 32)` colored shadow looks like.

```
.boxshadow{ -moz-box-shadow:4px 4px 4px  
4px rgb(64, 33, 32); -webkit-box-  
shadow:4px 4px 4px 4px rgb(64, 33, 32);  
box-shadow:4px 4px 4px 4px rgb(64, 33, 32)  
}
```

Background

The CSS property to change the background color of an element to YIQ 42.1550, 18.7970, 6.2610 is called "background". The background property can be set on classes, ids or directly on the HTML element.

```
.background, #background, body{  
background: rgb(64, 33, 32) }
```

If only the background color should be changed can be used:

```
.background{ background-color: rgb(64, 33,  
32) }
```

This example shows the color as background, it is applied via the CSS property "background".

To optimize and compress your CSS code, you can use our [online CSS compressor and optimizer](#) based on csstidy. If you want to create a linear or radial gradient as background or border, check our [CSS Gradient Generator](#).

Hey! You found this booklet interesting? Support Converting Colors with the new Membership Option!

The pro membership hides all ads, plus gives you double the colors in the color bucket, and more awesome pro features!

[Learn more, Memberships starting at \\$2.50/m!](#)

**Follow me
on Twitter!**

@ConvertingColor