

Converting Colors

YIQ(42.8070, 19.8970, 8.3530)

Have a look what the booklet for
YIQ(42.8070, 19.8970, 8.3530)
contains.

YIQ(42.8070, 19.8970, 8.3530)	3
<i>Conversions</i>	4
<i>Details</i>	6
<i>Harmonies</i>	12
<i>Previews</i>	24
<i>Color Blindness Simulation</i>	28
<i>CSS Examples</i>	31

Color

**YIQ(42.8070, 19.8970,
8.3530)**

Conversions

Conversions Part 1

Format	Color
Hex	432023
RGB	67, 32, 35
RGB Percent	26%, 13%, 14%
CMY	0.7372, 0.8746, 0.8627
CMYK	0.00, 0.52, 0.48, 0.74
HSL	355°, 35%, 19%
HSV	355°, 52%, 26%
XYZ	3.1360, 2.3478, 1.8795
YIQ	42.8070, 19.8970, 8.3530

Conversions

Conversions Part 2

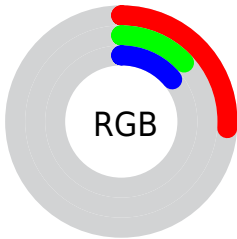
Format	Color
RYB	67, 32, 35
Decimal	4399139
CIELab	17.22, 17.20, 5.58
CIElCh	17, 18.079, 17.978
Yxy	2.3478, 0.4259, 0.3188
Android (android.graphics.Color)	4282589219 (0xFF432023)
YUV	42.8070, -3.8489, 21.2173
Hunter-Lab	15.3224, 9.7191, 3.4529

Details

The YIQ color **42.8070, 19.8970, 8.3530** is a dark color, and the websafe version is hex **663333**. A complement of this color would be **56.1930, -19.8970, -8.3530**, and the grayscale version is **43.0000, -0.0000, -0.0000**.

A 20% lighter version of the original color is **89.1880, 23.1980, 9.1020**, and **3.8870, 7.7480, 2.7560** is the 20% darker color. If you saturate the color by 10%, you get **38.0140, 23.7480, 10.1480**, and if you desaturate by 10%, it is **47.6000, 16.0460, 6.5580**.

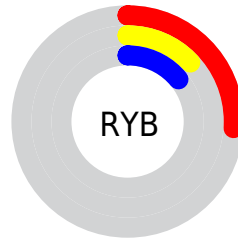
Distribution



Red (26%)

Green (13%)

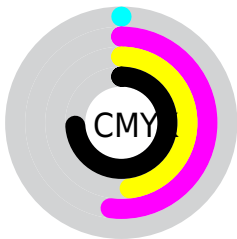
Blue (14%)



Red (26%)

Yellow (13%)

Blue (14%)

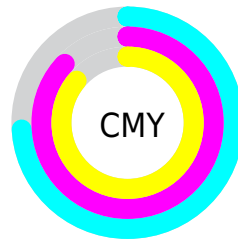


Cyan (0%)

Magenta (52%)

Yellow (48%)

Black (74%)



Cyan (74%)

Magenta (87%)

Yellow (86%)

Brightness & Saturation Gradients

These gradients show how the YIQ color 42.8070, 19.8970, 8.3530 changes by changing the brightness by 10 percent. The first figure shows a shift by +10% for each color and the second figure -10%.

Similar to the brightness gradients but the following saturation gradients show a change of the YIQ color 42.8070, 19.8970, 8.3530 by changing the saturation by 10% instead.

■ 42.8070, 19.8970,
8.3530

■ 42.8070, 19.8970,
8.3530

■ 255.0000, -0.0000,
-0.0000

■ 21.0950, 19.0260,
7.6180

■ 89.1880, 23.1980,
9.1020

■ 3.8870, 7.7480,
2.7560

■ 113.7860, 24.3900,
9.5260

■ 0.0000, 0.0000,
0.0000

■ 139.3840, 25.5820,
9.9500

■ 165.9820, 26.7740,
10.3740

■ 193.2810, 27.3700,
10.5860

■ 221.5800, 27.9660,

10.7980

241.2080, 11.2780,
4.8620

42.8070, 19.8970,
8.3530

42.8070, 19.8970,
8.3530

38.0140, 23.7480,
10.1480

47.6000, 16.0460,
6.5580

33.8080, 27.3240,
11.4200

51.8060, 12.4700,
5.2860

29.0150, 31.1750,
13.2150

56.5990, 8.6190,
3.4910

24.2220, 35.0260,
15.0100

61.5060, 4.4470,
2.0070

20.7170, 38.0060,
16.0700

65.7120, 0.8710,
0.7350

■ 70.5050, -2.9800,
-1.0600

■ 75.2980, -6.8310,
-2.8550

■ 80.0910, -10.6820,
-4.6500

■ 84.2970, -14.2580,
-5.9220

Harmonies

Analogous

The Analogous color harmony consists of three colors that are next to each other on the color wheel.



43.3920, 13.9360, 11.7600



42.8070, 19.8970, 8.3530



42.1180, 20.2190, 2.5150

Triad

The Triadic color harmony groups three colors that are evenly spaced from another and form a triangle on the color wheel.



42.8070, 19.8970, 8.3530



38.6970, -3.9410, -11.1810



36.1460, -29.7100, -1.2140

Complementary

The Complementary color scheme is a pair of colors which are on the opposite of each other on the color wheel.



42.8070, 19.8970, 8.3530



56.1930, -19.8970, -8.3530

Split Complementary

Split-complementary colors differ from the complementary color scheme. The scheme consists of three colors, the original color and two neighbors of the complement color.



35.1300, -32.7810, -6.1330



42.8070, 19.8970, 8.3530



35.0740, -21.1800, -12.6360

Square

The Square scheme is like the rectangle color scheme, but the four colors are evenly spaced on the color wheel.



42.8070, 19.8970, 8.3530



40.6230, 8.0710, -8.6090



34.4630, -29.5250, -10.0770



42.1700, -11.9220, 6.8140

Rectangle

The Rectangle color scheme consists of four colors that form a rectangle on the color wheel.



42.8070, 19.8970, 8.3530



41.7000, 18.3400, -1.9800



34.4630, -29.5250, -10.0770



34.5260, -33.8360, -3.5320

Sweetspot

The Sweet Spot groups the original color and five complimentary colors.



42.8070, 19.8970, 8.3530



77.3000, 8.0230, 3.2790



45.5580, 7.8370, 17.6690



37.5060, 4.4470, 2.0070



171.0000, -0.0000, -0.0000



43.0000, -0.0000, -0.0000

Same Dimension

The Same Dimension uses a secret algorithm to generate beautiful new colors.



42.8070, 19.8970, 8.3530



49.0150, 31.1750, 13.2150



50.6830, 17.0100, 0.0980



30.8970, 1.7880, 0.6360



29.9150, 55.2440, 23.0520



69.1420, 127.4050, 53.3970

Inverse Universe

The Inverse Universe completely reimagines the original color for something new.



42.8070, 19.8970, 8.3530



49.0150, 31.1750, 13.2150



48.3170, -17.0100, -0.0980



30.8970, 1.7880, 0.6360



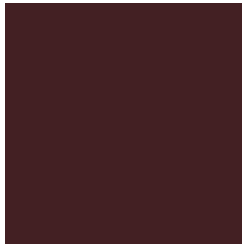
29.9150, 55.2440, 23.0520



69.1420, 127.4050, 53.3970

Previews

White Background



This preview shows how the YIQ color 42.8070, 19.8970, 8.3530 looks on a white background.

Color Contrast Check

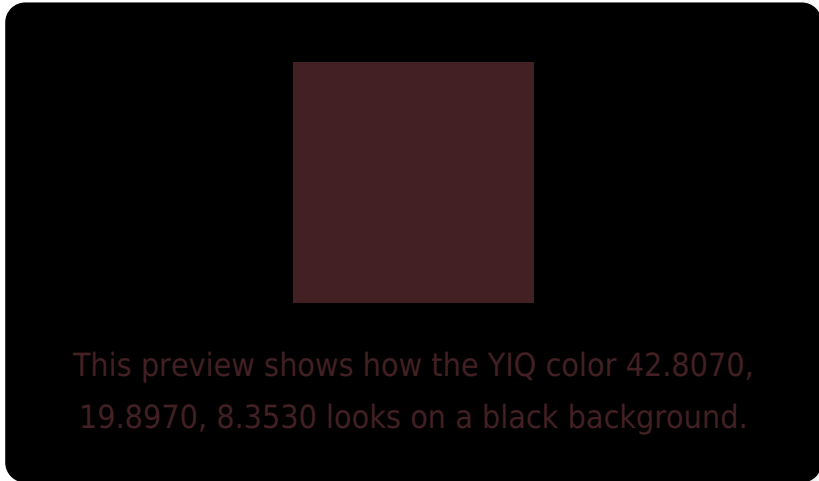
Large Text (above 18pt) WCAG AA ✓ Pass

Any Text WCAG AA ✓ Pass

Large Text (above 18pt) WCAG AAA ✓ Pass

Any Text WCAG AAA ✓ Pass

Black Background



Color Contrast Check

Large Text (above 18pt) WCAG AA × Fail

Any Text WCAG AA × Fail

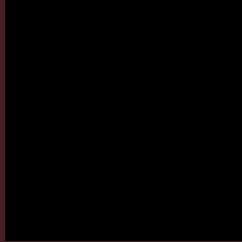
Large Text (above 18pt) WCAG AAA × Fail

Any Text WCAG AAA × Fail

If you want to check with other color combinations, try the [Color Contrast Checker](#).

YIQ 42.8070, 19.8970, 8.3530

Background



This preview shows how black text looks on a background with the YIQ color 42.8070, 19.8970, 8.3530.

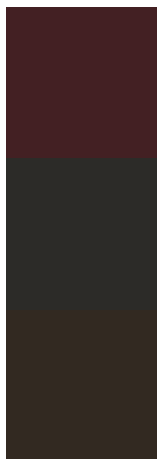


This preview shows how white text looks on a background with the YIQ color 42.8070, 19.8970,

Color Blindness Simulation

Color vision deficiency is a very complex topic, and I could not describe the different causes any better than Wikipedia does, so if you want to learn more, you should check out their [article about color blindness](#).

Dichromacy



Original Color

42.8070, 19.8970, 8.3530

Protanopia

42.9570, 1.5590, -0.7210

Deuteranopia

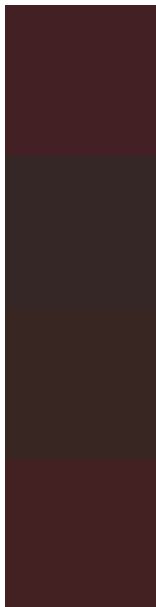
42.7790, 7.9320, -0.5800



Tritanopia

42.6930, 20.2180, 8.0420

Trichromacy



Original Color

42.8070, 19.8970, 8.3530

Protanomaly

42.7730, 8.0690, 2.4450

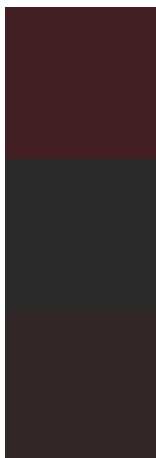
Deuteranomaly

42.9260, 12.0120, 2.5720

Tritanomaly

42.6930, 20.2180, 8.0420

Monochromacy



Original Color

42.8070, 19.8970, 8.3530

Achromatopsia

43.0000, -0.0000, -0.0000

Achromatomaly

43.0010, 7.4270, 3.0670

CSS Examples

Text

The CSS property to change the color of the text to YIQ 42.8070, 19.8970, 8.3530 is called "color". The color property can be set on classes, ids or directly on the HTML element.

This example shows how text in the color `rgb(67, 32, 35)` looks like.

```
.text, #text, p{  
    color:rgb(67, 32, 35)  
}
```

If you want to add a text shadow in that color use the text-shadow property, you can generate a text shadow directly with our [CSS Text Shadow Generator](#).

Here you see how black text with a 4 pixel rgb(67, 32, 35) colored shadow looks like.

```
.shadow{ text-shadow: 4px 4px 2px rgb(67, 32, 35) }
```

Border

The CSS property to change the border of an element to YIQ 42.8070, 19.8970, 8.3530 is called "border". The border property can be set on classes, ids or directly on the HTML element.

This example shows the color as border, it can be applied via the CSS property "border" or "border-color".

```
.border, #border, table{ border:4px solid rgb(67, 32, 35) }
```


If only the border color should be changed use the property `border-color`.

```
.border{ border-color:rgb(67, 32, 35) }
```

If you want to add a box shadow in that color use:

Here you see how a box with a 4 pixel `rgb(67, 32, 35)` colored shadow looks like.

```
.boxshadow{ -moz-box-shadow:4px 4px 4px  
4px rgb(67, 32, 35); -webkit-box-  
shadow:4px 4px 4px 4px rgb(67, 32, 35);  
box-shadow:4px 4px 4px 4px rgb(67, 32, 35)  
}
```

Background

The CSS property to change the background color of an element to YIQ 42.8070, 19.8970, 8.3530 is called "background". The background property can be set on classes, ids or directly on the HTML element.

```
.background, #background, body{  
background: rgb(67, 32, 35) }
```

If only the background color should be changed can be used:

```
.background{ background-color: rgb(67, 32,  
35) }
```

This example shows the color as background, it is applied via the CSS property "background".

To optimize and compress your CSS code, you can use our [online CSS compressor and optimizer](#) based on csstidy. If you want to create a linear or radial gradient as background or border, check our [CSS Gradient Generator](#).

Hey! You found this booklet interesting? Support Converting Colors with the new Membership Option!

The pro membership hides all ads, plus gives you double the colors in the color bucket, and more awesome pro features!

[Learn more, Memberships starting at \\$2.50/m!](#)

**Follow me
on Twitter!**

@ConvertingColor