

# Converting Colors

YIQ(42.8180, 21.3640, 9.3000)

Have a look what the booklet for  
YIQ(42.8180, 21.3640, 9.3000)  
contains.

<b>YIQ(42.8180, 21.3640, 9.3000)</b> .....	3
<b><i>Conversions</i></b> .....	4
<b><i>Details</i></b> .....	6
<b><i>Harmonies</i></b> .....	12
<b><i>Previews</i></b> .....	24
<b><i>Color Blindness Simulation</i></b> .....	28
<b><i>CSS Examples</i></b> .....	31

# Color

**YIQ(42.8180, 21.3640,  
9.3000)**

# Conversions

## Conversions Part 1

Format	Color
Hex	451F23
RGB	69, 31, 35
RGB Percent	27%, 12%, 14%
CMY	0.7293, 0.8785, 0.8627
CMYK	0.00, 0.55, 0.49, 0.73
HSL	354°, 38%, 20%
HSV	354°, 55%, 27%
XYZ	3.2492, 2.3667, 1.8773
YIQ	42.8180, 21.3640, 9.3000

# Conversions

## Conversions Part 2

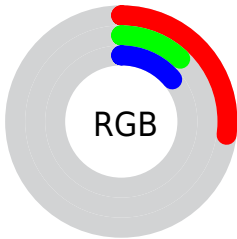
<b>Format</b>	<b>Color</b>
<b>R<sub>YB</sub></b>	69, 31, 35
Decimal	4529955
CIE <sub>Lab</sub>	17.30, 18.72, 5.75
CIE <sub>LCh</sub>	17, 19.584, 17.086
Yxy	2.3667, 0.4336, 0.3158
Android (android.graphics.Color)	4282720035 (0xFF451F23)
YUV	42.8180, -3.8543, 22.9616
Hunter-Lab	15.3840, 10.7779, 3.5337

# Details

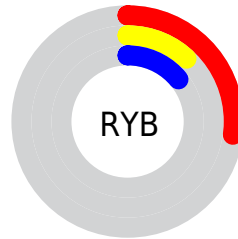
The YIQ color **42.8180, 21.3640, 9.3000** is a dark color, and the websafe version is hex **663333**. A complement of this color would be **57.1820, -21.3640, -9.3000**, and the grayscale version is **43.0000, -0.0000, -0.0000**.

A 20% lighter version of the original color is **89.1990, 24.6650, 10.0490**, and **5.0830, 10.1320, 3.6040** is the 20% darker color. If you saturate the color by 10%, you get **38.0250, 25.2150, 11.0950**, and if you desaturate by 10%, it is **47.6110, 17.5130, 7.5050**.

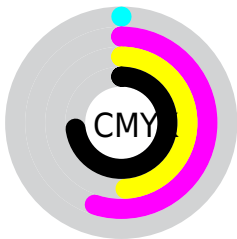
# Distribution



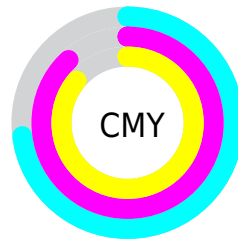
- Red (27%)
- Green (12%)
- Blue (14%)



- Red (27%)
- Yellow (12%)
- Blue (14%)



- Cyan (0%)
- Magenta (55%)
- Yellow (49%)
- Black (73%)



- Cyan (73%)
- Magenta (88%)
- Yellow (86%)

# Brightness & Saturation Gradients

These gradients show how the YIQ color 42.8180, 21.3640, 9.3000 changes by changing the brightness by 10 percent. The first figure shows a shift by +10% for each color and the second figure -10%.

Similar to the brightness gradients but the following saturation gradients show a change of the YIQ color 42.8180, 21.3640, 9.3000 by changing the saturation by 10% instead.



■ 42.8180, 21.3640,  
9.3000

■ 42.8180, 21.3640,  
9.3000

■ 255.0000, -0.0000,  
-0.0000

■ 21.1060, 20.4930,  
8.5650

■ 89.1990, 24.6650,  
10.0490

■ 5.0830, 10.1320,  
3.6040

■ 114.0960, 26.4530,  
10.6850

■ 0.0000, 0.0000,  
0.0000

■ 140.2810, 27.3700,  
10.5860

■ 166.8790, 28.5620,  
11.0100

■ 193.5910, 29.4330,  
11.7450

■ 220.9930, 28.2410,

11.3210

240.6210, 11.5530,  
5.3850

42.8180, 21.3640,  
9.3000

42.8180, 21.3640,  
9.3000

38.0250, 25.2150,  
11.0950

47.6110, 17.5130,  
7.5050

33.2320, 29.0660,  
12.8900

52.4040, 13.6620,  
5.7100

28.4390, 32.9170,  
14.6850

57.3110, 9.4900,  
4.2260

23.5320, 37.0890,  
16.1690

62.1040, 5.6390,  
2.4310

21.4290, 38.8770,  
16.8050

66.3100, 2.0630,  
1.1590

■ 71.1030, -1.7880,  
-0.6360

■ 75.8960, -5.6390,  
-2.4310

■ 80.6890, -9.4900,  
-4.2260

■ 85.5960, -13.6620,  
-5.7100

# Harmonies

## Analogous

The Analogous color harmony consists of three colors that are next to each other on the color wheel.



43.2180, 14.4860, 12.8060



42.8180, 21.3640, 9.3000



42.0150, 22.0070, 3.1510

# Triad

The Triadic color harmony groups three colors that are evenly spaced from another and form a triangle on the color wheel.



42.8180, 21.3640, 9.3000



38.2840, -4.2160, -11.7040



34.9820, -35.1200, -2.2880

# Complementary

The Complementary color scheme is a pair of colors which are on the opposite of each other on the color wheel.



42.8180, 21.3640, 9.3000



57.1820, -21.3640, -9.3000

# Split Complementary

Split-complementary colors differ from the complementary color scheme. The scheme consists of three colors, the original color and two neighbors of the complement color.



35.9450, -33.6980, -6.0340



42.8180, 21.3640, 9.3000



33.7640, -23.2430, -13.7950

# Square

The Square scheme is like the rectangle color scheme, but the four colors are evenly spaced on the color wheel.



42.8180, 21.3640, 9.3000



40.2810, 9.0340, -9.5420



35.0500, -29.8000, -10.6000



42.0990, -13.1600, 7.2240



# Rectangle

The Rectangle color scheme consists of four colors that form a rectangle on the color wheel.



42.8180, 21.3640, 9.3000



42.0700, 20.1740, -2.1780



35.0500, -29.8000, -10.6000



35.3410, -34.7530, -3.4330

# Sweetspot

The Sweet Spot groups the original color and five complimentary colors.



42.8180, 21.3640, 9.3000



78.7130, 8.2980, 3.8020



45.4980, 8.0660, 19.0260



39.8050, 5.0430, 2.2190



173.0000, -0.0000, 0.0000



46.0000, 0.0000, -0.0000



# Same Dimension

The Same Dimension uses a secret algorithm to generate beautiful new colors.



42.8180, 21.3640, 9.3000



48.4390, 32.9170, 14.6850



51.1670, 18.5230, 0.2110



33.3100, 2.0630, 1.1590



30.8550, 55.4730, 24.4090



70.6090, 127.5880, 55.5880



# Inverse Universe

The Inverse Universe completely reimagines the original color for something new.



42.8180, 21.3640, 9.3000



48.4390, 32.9170, 14.6850



48.8330, -18.5230, -0.2110



33.3100, 2.0630, 1.1590



30.8550, 55.4730, 24.4090

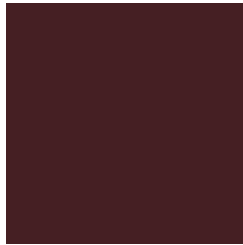


70.6090, 127.5880, 55.5880



# Previews

## White Background



This preview shows how the YIQ color 42.8180, 21.3640, 9.3000 looks on a white background.

## Color Contrast Check

Large Text (above 18pt) WCAG AA ✓ Pass

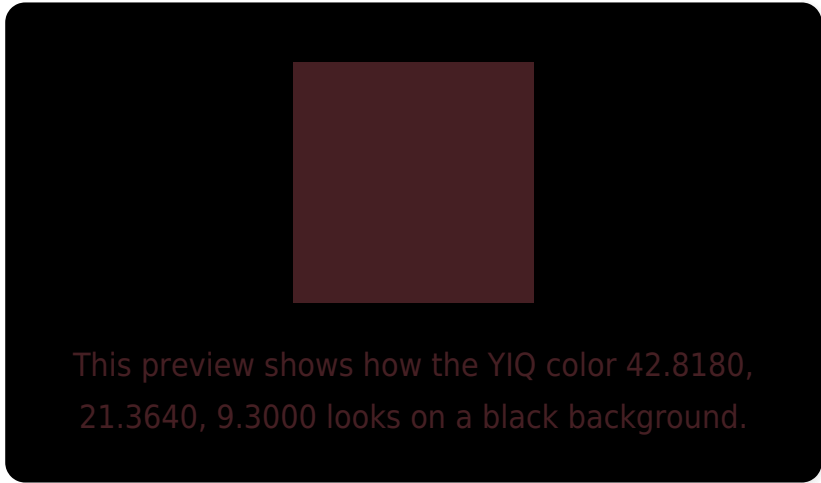
Any Text WCAG AA ✓ Pass

Large Text (above 18pt) WCAG AAA ✓ Pass

Any Text WCAG AAA ✓ Pass



# Black Background



## Color Contrast Check

Large Text (above 18pt) WCAG AA × Fail

Any Text WCAG AA × Fail

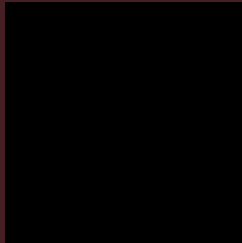
Large Text (above 18pt) WCAG AAA × Fail

Any Text WCAG AAA × Fail

If you want to check with other color combinations, try the [Color Contrast Checker](#).

**YIQ 42.8180, 21.3640, 9.3000**

## **Background**



This preview shows how black text looks on a background with the YIQ color 42.8180, 21.3640, 9.3000.



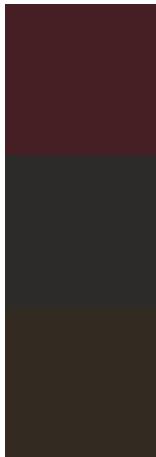
This preview shows how white text looks on a background with the YIQ color 42.8180, 21.3640,



# Color Blindness Simulation

Color vision deficiency is a very complex topic, and I could not describe the different causes any better than Wikipedia does, so if you want to learn more, you should check out their [article about color blindness](#).

## Dichromacy



### Original Color

42.8180, 21.3640, 9.3000

### Protanopia

43.3700, 1.8340, -0.1980

### Deuteranopia

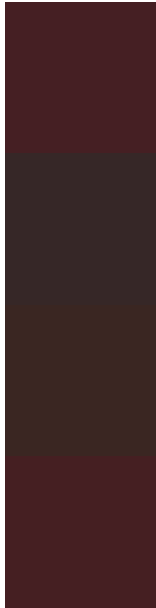
43.6650, 8.2530, -0.8910



## Tritanopia

42.5900, 22.0060, 8.6780

# Trichromacy



## Original Color

42.8180, 21.3640, 9.3000

## Protanomaly

43.4850, 8.9400, 3.1800

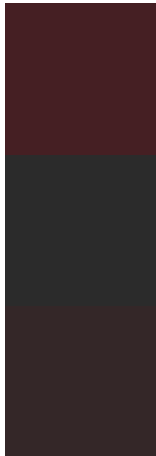
## Deuteranomaly

43.5240, 13.2040, 2.9960

## Tritanomaly

42.7040, 21.6850, 8.9890

# Monochromacy



## Original Color

42.8180, 21.3640, 9.3000

## Achromatopsia

43.0000, -0.0000, -0.0000

## Achromatomaly

43.0010, 7.4270, 3.0670

# CSS Examples

## Text

The CSS property to change the color of the text to YIQ 42.8180, 21.3640, 9.3000 is called "color". The color property can be set on classes, ids or directly on the HTML element.

This example shows how text in the color `rgb(69, 31, 35)` looks like.

```
.text, #text, p{  
    color:rgb(69, 31, 35)  
}
```

If you want to add a text shadow in that color use the text-shadow property, you can generate a text shadow directly with our [CSS Text Shadow Generator](#).

Here you see how black text with a 4 pixel rgb(69, 31, 35) colored shadow looks like.

```
.shadow{ text-shadow: 4px 4px 2px rgb(69, 31, 35) }
```

## Border

The CSS property to change the border of an element to YIQ 42.8180, 21.3640, 9.3000 is called "border". The border property can be set on classes, ids or directly on the HTML element.

This example shows the color as border, it can be applied via the CSS property "border" or "border-color".

```
.border, #border, table{ border:4px solid rgb(69, 31, 35) }
```



If only the border color should be changed use the property border-color.

```
.border{ border-color:rgb(69, 31, 35) }
```

If you want to add a box shadow in that color use:

Here you see how a box with a 4 pixel rgb(69, 31, 35) colored shadow looks like.

```
.boxshadow{ -moz-box-shadow:4px 4px 4px  
4px rgb(69, 31, 35); -webkit-box-  
shadow:4px 4px 4px 4px rgb(69, 31, 35);  
box-shadow:4px 4px 4px 4px rgb(69, 31, 35)  
}
```

# Background

The CSS property to change the background color of an element to YIQ 42.8180, 21.3640, 9.3000 is called "background". The background property can be set on classes, ids or directly on the HTML element.

```
.background, #background, body{  
background: rgb(69, 31, 35) }
```

If only the background color should be changed can be used:

```
.background{ background-color: rgb(69, 31,  
35) }
```

This example shows the color as background, it is applied via the CSS property "background".

To optimize and compress your CSS code, you can use our [online CSS compressor and optimizer](#) based on csstidy. If you want to create a linear or radial gradient as background or border, check our [CSS Gradient Generator](#).

# Hey! You found this booklet interesting? Support Converting Colors with the new Membership Option!

The pro membership hides all ads, plus gives you double the colors in the color bucket, and more awesome pro features!

**[Learn more, Memberships starting at \\$2.50/m!](#)**

**Follow me  
on Twitter!**

@ConvertingColor