

Converting Colors

YIQ(42.8630, 25.4910, 6.0910)

Have a look what the booklet for
YIQ(42.8630, 25.4910, 6.0910)
contains.

YIQ(42.8630, 25.4910, 6.0910)	3
<i>Conversions</i>	4
<i>Details</i>	6
<i>Harmonies</i>	12
<i>Previews</i>	24
<i>Color Blindness Simulation</i>	28
<i>CSS Examples</i>	31

Color

**YIQ(42.8630, 25.4910,
6.0910)**

Conversions

Conversions Part 1

Format	Color
Hex	472019
RGB	71, 32, 25
RGB Percent	28%, 13%, 10%
CMY	0.7215, 0.8746, 0.9019
CMYK	0.00, 0.55, 0.65, 0.72
HSL	9°, 48%, 19%
HSV	9°, 65%, 28%
XYZ	3.2920, 2.4429, 1.2193
YIQ	42.8630, 25.4910, 6.0910

Conversions

Conversions Part 2

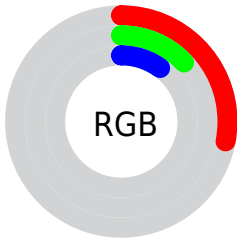
Format	Color
RYB	71, 33, 25
Decimal	4661273
CIELab	17.66, 17.90, 13.29
CIELCh	18, 22.296, 36.579
Yxy	2.4429, 0.4734, 0.3513
Android (android.graphics.Color)	4282851353 (0xFF472019)
YUV	42.8630, -8.8065, 24.6761
Hunter-Lab	15.6297, 10.2445, 6.3157

Details

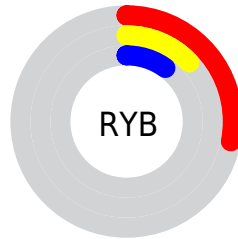
The YIQ color **42.8630, 25.4910, 6.0910** is a dark color, and the websafe version is hex **663333**. A complement of this color would be **53.1370, -25.4910, -6.0910**, and the grayscale version is **43.0000, -0.0000, -0.0000**.

A 20% lighter version of the original color is **89.4290, 29.7090, 6.7410**, and **5.3820, 10.7280, 3.8160** is the 20% darker color. If you saturate the color by 10%, you get **38.5430, 29.3880, 7.0520**, and if you desaturate by 10%, it is **47.1830, 21.5940, 5.1300**.

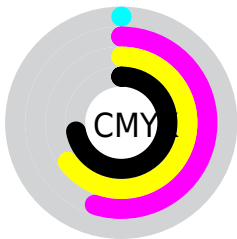
Distribution



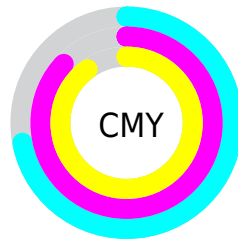
- Red (28%)
- Green (13%)
- Blue (10%)



- Red (28%)
- Yellow (13%)
- Blue (10%)



- Cyan (0%)
- Magenta (55%)
- Yellow (65%)
- Black (72%)



- Cyan (72%)
- Magenta (87%)
- Yellow (90%)

Brightness & Saturation Gradients

These gradients show how the YIQ color 42.8630, 25.4910, 6.0910 changes by changing the brightness by 10 percent. The first figure shows a shift by +10% for each color and the second figure -10%.

Similar to the brightness gradients but the following saturation gradients show a change of the YIQ color 42.8630, 25.4910, 6.0910 by changing the saturation by 10% instead.

■ 42.8630, 25.4910,
6.0910

■ 42.8630, 25.4910,
6.0910

■ 254.6580, 0.9630,
-0.9330

■ 20.8090, 25.5830,
4.4230

■ 89.4290, 29.7090,
6.7410

■ 5.3820, 10.7280,
3.8160

■ 114.3260, 31.4970,
7.3770

■ 0.0000, 0.0000,
0.0000

■ 140.3970, 32.7350,
6.9670

■ 166.9950, 33.9270,
7.3910

■ 193.8920, 35.7150,
8.0270

■ 219.9840, 32.4600,

6.4440

239.6120, 15.7720,
0.5080

42.8630, 25.4910,
6.0910

42.8630, 25.4910,
6.0910

38.5430, 29.3880,
7.0520

47.1830, 21.5940,
5.1300

34.2230, 33.2850,
8.0130

51.5030, 17.6970,
4.1690

29.9030, 37.1820,
8.9740

55.8230, 13.8000,
3.2080

27.6860, 39.2910,
9.2990

60.1430, 9.9030,
2.2470

64.5770, 5.6850,
1.5970

■ 68.8970, 1.7880,
0.6360

■ 73.2170, -2.1090,
-0.3250

■ 77.5370, -6.0060,
-1.2860

■ 81.8570, -9.9030,
-2.2470

Harmonies

Analogous

The Analogous color harmony consists of three colors that are next to each other on the color wheel.



43.4100, 22.6930, 12.7490



42.8630, 25.4910, 6.0910



42.3260, 22.3290, -2.6870

Triad

The Triadic color harmony groups three colors that are evenly spaced from another and form a triangle on the color wheel.



42.8630, 25.4910, 6.0910



34.8630, -19.2080, -15.3360



40.3580, -24.2550, 4.5530

Complementary

The Complementary color scheme is a pair of colors which are on the opposite of each other on the color wheel.



42.8630, 25.4910, 6.0910



53.1370, -25.4910, -6.0910

Split Complementary

Split-complementary colors differ from the complementary color scheme. The scheme consists of three colors, the original color and two neighbors of the complement color.



36.3840, -36.3120, -2.7120



42.8630, 25.4910, 6.0910



35.1810, -28.7910, -12.3670

Square

The Square scheme is like the rectangle color scheme, but the four colors are evenly spaced on the color wheel.



42.8630, 25.4910, 6.0910



39.5680, 0.7360, -13.3440



37.0050, -33.9270, -7.3910



44.8230, -3.3950, 11.9730

Rectangle

The Rectangle color scheme consists of four colors that form a rectangle on the color wheel.



42.8630, 25.4910, 6.0910



41.7120, 18.0660, -8.0300



37.0050, -33.9270, -7.3910



36.1500, -35.5330, -0.3090

Sweetspot

The Sweet Spot groups the original color and five complimentary colors.



42.8630, 25.4910, 6.0910



81.1430, 9.9030, 2.2470



43.2000, 14.8970, 21.8810



39.4630, 6.0060, 1.2860



173.0000, -0.0000, 0.0000



46.0000, 0.0000, -0.0000

Same Dimension

The Same Dimension uses a secret algorithm to generate beautiful new colors.



42.8630, 25.4910, 6.0910



47.9850, 39.8870, 9.5110



56.3640, 19.1660, -5.9380



33.7830, 2.1090, 0.3250



38.4060, 54.8790, 13.1430



87.8310, 125.9420, 30.3420

Inverse Universe

The Inverse Universe completely reimagines the original color for something new.



53.1370, -25.4910, -6.0910



64.0150, -39.8870, -9.5110



39.6360, -19.1660, 5.9380



34.2170, -2.1090, -0.3250



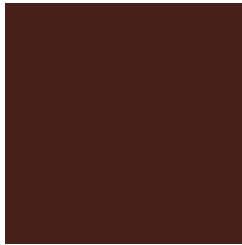
60.5940, -54.8790, -13.1430



139.1690, -125.9420, -30.3420

Previews

White Background



This preview shows how the YIQ color 42.8630, 25.4910, 6.0910 looks on a white background.

Color Contrast Check

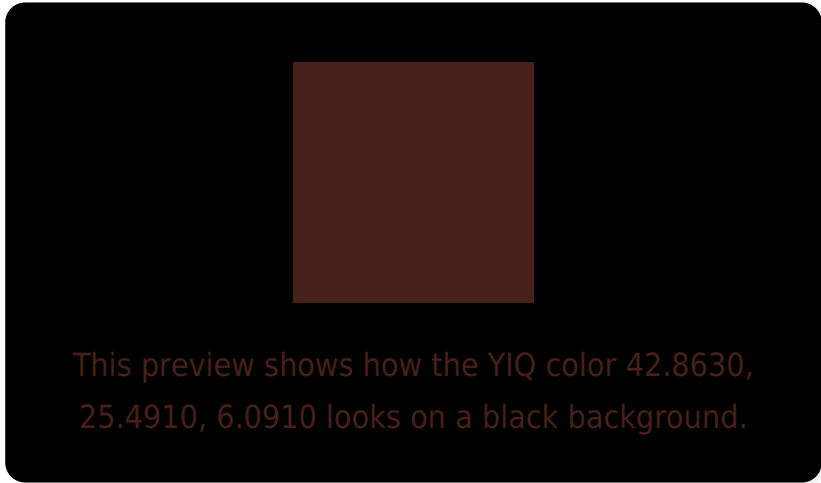
Large Text (above 18pt) WCAG AA ✓ Pass

Any Text WCAG AA ✓ Pass

Large Text (above 18pt) WCAG AAA ✓ Pass

Any Text WCAG AAA ✓ Pass

Black Background



Color Contrast Check

Large Text (above 18pt) WCAG AA × Fail

Any Text WCAG AA × Fail

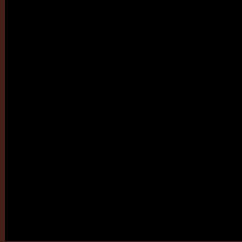
Large Text (above 18pt) WCAG AAA × Fail

Any Text WCAG AAA × Fail

If you want to check with other color combinations, try the [Color Contrast Checker](#).

YIQ 42.8630, 25.4910, 6.0910

Background



This preview shows how black text looks on a background with the YIQ color 42.8630, 25.4910, 6.0910.

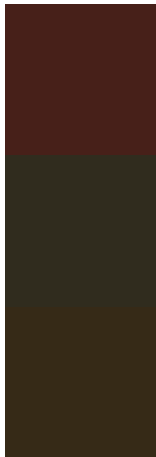


This preview shows how white text looks on a background with the YIQ color 42.8630, 25.4910,

Color Blindness Simulation

Color vision deficiency is a very complex topic, and I could not describe the different causes any better than Wikipedia does, so if you want to learn more, you should check out their [article about color blindness](#).

Dichromacy



Original Color

42.8630, 25.4910, 6.0910

Protanopia

43.6000, 6.8780, -3.5060

Deuteranopia

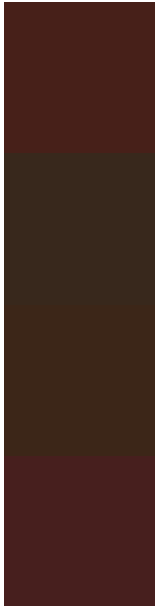
43.4220, 13.2510, -3.3650



Tritanopia

43.1880, 23.1980, 9.1020

Trichromacy



Original Color

42.8630, 25.4910, 6.0910

Protanomaly

43.4160, 13.3880, -0.3400

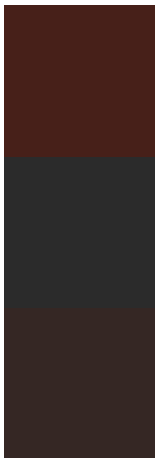
Deuteranomaly

42.9820, 17.6060, 0.3100

Tritanomaly

42.8460, 24.1610, 8.1690

Monochromacy



Original Color

42.8630, 25.4910, 6.0910

Achromatopsia

43.0000, -0.0000, -0.0000

Achromatomaly

42.8440, 9.3070, 2.0350

CSS Examples

Text

The CSS property to change the color of the text to YIQ 42.8630, 25.4910, 6.0910 is called "color". The color property can be set on classes, ids or directly on the HTML element.

This example shows how text in the color `rgb(71, 32, 25)` looks like.

```
.text, #text, p{  
    color:rgb(71, 32, 25)  
}
```

If you want to add a text shadow in that color use the text-shadow property, you can generate a text shadow directly with our [CSS Text Shadow Generator](#).

Here you see how black text with a 4 pixel rgb(71, 32, 25) colored shadow looks like.

```
.shadow{ text-shadow: 4px 4px 2px rgb(71, 32, 25) }
```

Border

The CSS property to change the border of an element to YIQ 42.8630, 25.4910, 6.0910 is called "border". The border property can be set on classes, ids or directly on the HTML element.

This example shows the color as border, it can be applied via the CSS property "border" or "border-color".

```
.border, #border, table{ border:4px solid rgb(71, 32, 25) }
```


If only the border color should be changed use the property `border-color`.

```
.border{ border-color:rgb(71, 32, 25) }
```

If you want to add a box shadow in that color use:

Here you see how a box with a 4 pixel `rgb(71, 32, 25)` colored shadow looks like.

```
.boxshadow{ -moz-box-shadow:4px 4px 4px  
4px rgb(71, 32, 25); -webkit-box-  
shadow:4px 4px 4px 4px rgb(71, 32, 25);  
box-shadow:4px 4px 4px 4px rgb(71, 32, 25)  
}
```

Background

The CSS property to change the background color of an element to YIQ 42.8630, 25.4910, 6.0910 is called "background". The background property can be set on classes, ids or directly on the HTML element.

```
.background, #background, body{  
background: rgb(71, 32, 25) }
```

If only the background color should be changed can be used:

```
.background{ background-color: rgb(71, 32,  
25) }
```

This example shows the color as background, it is applied via the CSS property "background".

To optimize and compress your CSS code, you can use our [online CSS compressor and optimizer](#) based on csstidy. If you want to create a linear or radial gradient as background or border, check our [CSS Gradient Generator](#).

Hey! You found this booklet
interesting? Support Converting
Colors with the new Membership
Option!

The pro membership hides all ads, plus gives you
double the colors in the color bucket, and more
awesome pro features!

[Learn more, Memberships starting at \\$2.50/m!](#)

**Follow me
on Twitter!**

@ConvertingColor