

Converting Colors

YIQ(44.7780, 36.0360, 7.7160)

Have a look what the booklet for
YIQ(44.7780, 36.0360, 7.7160)
contains.

YIQ(44.7780, 36.0360, 7.7160)	3
<i>Conversions</i>	4
<i>Details</i>	6
<i>Harmonies</i>	12
<i>Previews</i>	24
<i>Color Blindness Simulation</i>	28
<i>CSS Examples</i>	31

Color

**YIQ(44.7780, 36.0360,
7.7160)**

Conversions

Conversions Part 1

Format	Color
Hex	541E12
RGB	84, 30, 18
RGB Percent	33%, 12%, 7%
CMY	0.6705, 0.8824, 0.9293
CMYK	0.00, 0.64, 0.79, 0.67
HSL	11°, 65%, 20%
HSV	11°, 79%, 33%
XYZ	4.2321, 2.8574, 0.9024
YIQ	44.7780, 36.0360, 7.7160

Conversions

Conversions Part 2

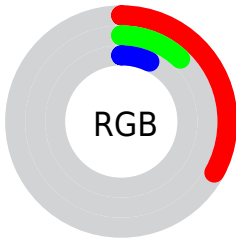
Format	Color
R_YB	84, 33, 18
Decimal	5512722
CIE Lab	19.46, 24.36, 20.65
CIE LCh	19, 31.934, 40.291
Yxy	2.8574, 0.5295, 0.3575
Android (android.graphics.Color)	4283702802 (0xFF541E12)
YUV	44.7780, -13.2016, 34.3977
Hunter-Lab	16.9040, 15.1078, 8.6676

Details

The YIQ color **44.7780, 36.0360, 7.7160** is a dark color, and the websafe version is hex **663333**. A complement of this color would be **57.2220, -36.0360, -7.7160**, and the grayscale version is **45.0000, -0.0000, -0.0000**.

A 20% lighter version of the original color is **92.8280, 41.7670, 8.4790**, and **10.8780, 21.1350, 7.9430** is the 20% darker color. If you saturate the color by 10%, you get **39.7570, 40.5290, 8.8890**, and if you desaturate by 10%, it is **49.7990, 31.5430, 6.5430**.

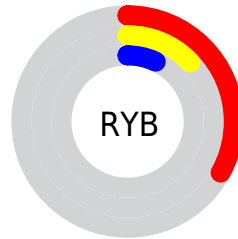
Distribution



Red (33%)

Green (12%)

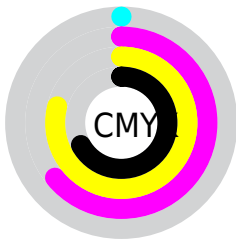
Blue (7%)



Red (33%)

Yellow (13%)

Blue (7%)

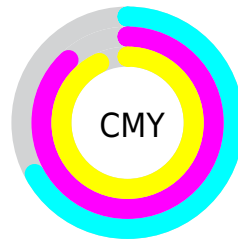


Cyan (0%)

Magenta (64%)

Yellow (79%)

Black (67%)



Cyan (67%)

Magenta (88%)

Yellow (93%)

Brightness & Saturation Gradients

These gradients show how the YIQ color 44.7780, 36.0360, 7.7160 changes by changing the brightness by 10 percent. The first figure shows a shift by +10% for each color and the second figure -10%.

Similar to the brightness gradients but the following saturation gradients show a change of the YIQ color 44.7780, 36.0360, 7.7160 by changing the saturation by 10% instead.

■ 44.7780, 36.0360,
7.7160

■ 44.7780, 36.0360,
7.7160

■ 253.6320, 3.8520,
-3.7320

■ 21.7500, 33.2390,
8.8470

■ 92.8280, 41.7670,
8.4790

■ 10.8780, 21.1350,
7.9430

■ 118.4970, 44.1970,
8.4930

■ 0.0000, 0.0000,
0.0000

■ 144.2800, 46.3060,
8.8180

■ 171.1770, 48.0940,
9.4540

■ 198.9600, 50.2030,
9.7790

■ 219.0720, 35.0280,

3.9560

238.7000, 18.3400,
-1.9800

44.7780, 36.0360,
7.7160

44.7780, 36.0360,
7.7160

39.7570, 40.5290,
8.8890

49.7990, 31.5430,
6.5430

34.6220, 45.3430,
9.7510

54.9340, 26.7290,
5.6810

33.9210, 45.9390,
9.9630

59.9550, 22.2360,
4.5080

65.0900, 17.4220,
3.6460

69.5240, 13.2040,
2.9960

■ 74.5450, 8.7110,
1.8230

■ 79.6800, 3.8970,
0.9610

■ 84.7010, -0.5960,
-0.2120

■ 89.8360, -5.4100,
-1.0740

Harmonies

Analogous

The Analogous color harmony consists of three colors that are next to each other on the color wheel.



44.3730, 33.2830, 19.0670



44.7780, 36.0360, 7.7160



44.7090, 31.3160, -5.8680

Triad

The Triadic color harmony groups three colors that are evenly spaced from another and form a triangle on the color wheel.



44.7780, 36.0360, 7.7160



36.9930, -25.6260, -20.1700



38.7890, -41.5860, 4.7660

Complementary

The Complementary color scheme is a pair of colors which are on the opposite of each other on the color wheel.



44.7780, 36.0360, 7.7160



57.2220, -36.0360, -7.7160

Split Complementary

Split-complementary colors differ from the complementary color scheme. The scheme consists of three colors, the original color and two neighbors of the complement color.



42.0720, -44.0610, 0.0590



44.7780, 36.0360, 7.7160



40.3160, -33.6050, -13.2290

Square

The Square scheme is like the rectangle color scheme, but the four colors are evenly spaced on the color wheel.



44.7780, 36.0360, 7.7160



39.8570, -1.8760, -21.0760



42.2370, -40.3920, -5.8640



48.5230, -2.2500, 18.7580

Rectangle

The Rectangle color scheme consists of four colors that form a rectangle on the color wheel.



44.7780, 36.0360, 7.7160



44.6430, 22.5140, -11.5500



42.2370, -40.3920, -5.8640



40.0660, -43.9240, 3.0840

Sweetspot

The Sweet Spot groups the original color and five complimentary colors.



44.7780, 36.0360, 7.7160



94.0080, 14.7170, 3.1090



44.0040, 21.6810, 31.0970



46.5450, 8.7110, 1.8230



184.0000, 0.0000, -0.0000



56.0000, -0.0000, 0.0000

Same Dimension

The Same Dimension uses a secret algorithm to generate beautiful new colors.



44.7780, 36.0360, 7.7160



48.3630, 56.4380, 12.4220



63.5620, 27.2360, -9.0200



38.1960, 2.3840, 0.8480



42.5480, 57.3550, 12.3230



94.0220, 126.7220, 27.2180

Inverse Universe

The Inverse Universe completely reimagines the original color for something new.



57.2220, -36.0360, -7.7160



68.0500, -56.1630, -11.8990



38.4380, -27.2360, 9.0200



39.2170, -2.1090, -0.3250



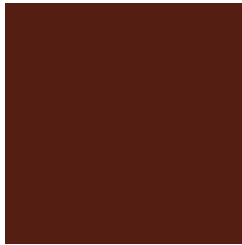
62.4520, -57.3550, -12.3230



137.9780, -126.7220, -27.2180

Previews

White Background



This preview shows how the YIQ color 44.7780, 36.0360, 7.7160 looks on a white background.

Color Contrast Check

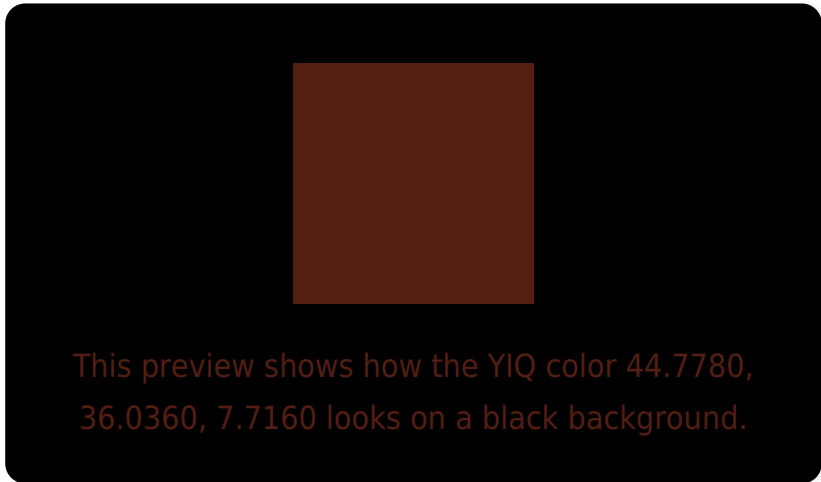
Large Text (above 18pt) WCAG AA ✓ Pass

Any Text WCAG AA ✓ Pass

Large Text (above 18pt) WCAG AAA ✓ Pass

Any Text WCAG AAA ✓ Pass

Black Background



Color Contrast Check

Large Text (above 18pt) WCAG AA × Fail

Any Text WCAG AA × Fail

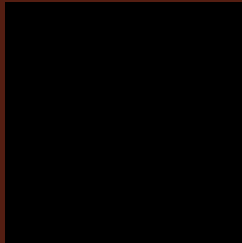
Large Text (above 18pt) WCAG AAA × Fail

Any Text WCAG AAA × Fail

If you want to check with other color combinations, try the [Color Contrast Checker](#).

YIQ 44.7780, 36.0360, 7.7160

Background



This preview shows how black text looks on a background with the YIQ color 44.7780, 36.0360, 7.7160.

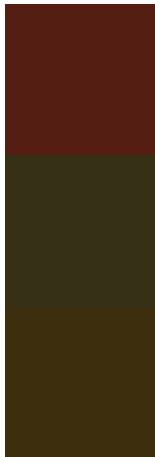


This preview shows how white text looks on a background with the YIQ color 44.7780, 36.0360,

Color Blindness Simulation

Color vision deficiency is a very complex topic, and I could not describe the different causes any better than Wikipedia does, so if you want to learn more, you should check out their [article about color blindness](#).

Dichromacy



Original Color

44.7780, 36.0360, 7.7160

Protanopia

46.9440, 11.6010, -6.5030

Deuteranopia

46.8370, 19.2120, -6.7720



Tritanopia

45.5590, 32.4590, 11.9710

Trichromacy



Original Color

44.7780, 36.0360, 7.7160

Protanomaly

45.8960, 20.7240, -1.1320

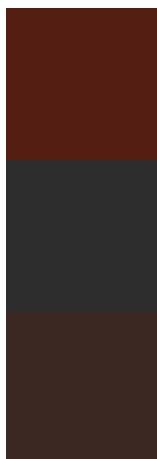
Deuteranomaly

45.8210, 25.3090, -1.6270

Tritanomaly

45.1030, 33.7430, 10.7270

Monochromacy



Original Color

44.7780, 36.0360, 7.7160

Achromatopsia

45.0000, -0.0000, -0.0000

Achromatomaly

45.1110, 12.9290, 2.4730

CSS Examples

Text

The CSS property to change the color of the text to YIQ 44.7780, 36.0360, 7.7160 is called "color". The color property can be set on classes, ids or directly on the HTML element.

This example shows how text in the color `rgb(84, 30, 18)` looks like.

```
.text, #text, p{  
    color:rgb(84, 30, 18)  
}
```

If you want to add a text shadow in that color use the text-shadow property, you can generate a text shadow directly with our [CSS Text Shadow Generator](#).

Here you see how black text with a 4 pixel rgb(84, 30, 18) colored shadow looks like.

```
.shadow{ text-shadow: 4px 4px 2px rgb(84, 30, 18) }
```

Border

The CSS property to change the border of an element to YIQ 44.7780, 36.0360, 7.7160 is called "border". The border property can be set on classes, ids or directly on the HTML element.

This example shows the color as border, it can be applied via the CSS property "border" or "border-color".

```
.border, #border, table{ border:4px solid rgb(84, 30, 18) }
```


If only the border color should be changed use the property `border-color`.

```
.border{ border-color:rgb(84, 30, 18) }
```

If you want to add a box shadow in that color use:

Here you see how a box with a 4 pixel `rgb(84, 30, 18)` colored shadow looks like.

```
.boxshadow{ -moz-box-shadow:4px 4px 4px  
4px rgb(84, 30, 18); -webkit-box-  
shadow:4px 4px 4px 4px rgb(84, 30, 18);  
box-shadow:4px 4px 4px 4px rgb(84, 30, 18)  
}
```

Background

The CSS property to change the background color of an element to YIQ 44.7780, 36.0360, 7.7160 is called "background". The background property can be set on classes, ids or directly on the HTML element.

```
.background, #background, body{  
background: rgb(84, 30, 18) }
```

If only the background color should be changed can be used:

```
.background{ background-color: rgb(84, 30,  
18) }
```

This example shows the color as background, it is applied via the CSS property "background".

To optimize and compress your CSS code, you can use our [online CSS compressor and optimizer](#) based on csstidy. If you want to create a linear or radial gradient as background or border, check our [CSS Gradient Generator](#).

Hey! You found this booklet interesting? Support Converting Colors with the new Membership Option!

The pro membership hides all ads, plus gives you double the colors in the color bucket, and more awesome pro features!

[Learn more, Memberships starting at \\$2.50/m!](#)

**Follow me
on Twitter!**

@ConvertingColor