

Converting Colors

YIQ(44.8500, 18.3380, 9.0740)

Have a look what the booklet for
YIQ(44.8500, 18.3380, 9.0740)
contains.

YIQ(44.8500, 18.3380, 9.0740)	3
<i>Conversions</i>	4
<i>Details</i>	6
<i>Harmonies</i>	12
<i>Previews</i>	24
<i>Color Blindness Simulation</i>	28
<i>CSS Examples</i>	31

Color

**YIQ(44.8500, 18.3380,
9.0740)**

Conversions

Conversions Part 1

Format	Color
Hex	442228
RGB	68, 34, 40
RGB Percent	27%, 13%, 16%
CMY	0.7332, 0.8667, 0.8431
CMYK	0.00, 0.50, 0.41, 0.73
HSL	349°, 33%, 20%
HSV	349°, 50%, 27%
XYZ	3.3403, 2.5263, 2.3206
YIQ	44.8500, 18.3380, 9.0740

Conversions

Conversions Part 2

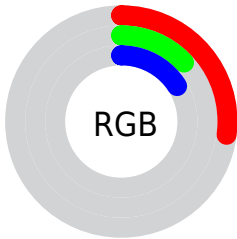
Format	Color
R_{YB}	68, 34, 40
Decimal	4465192
CIE _{Lab}	18.04, 17.07, 3.23
CIE _{LCh}	18, 17.369, 10.729
Yxy	2.5263, 0.4080, 0.3086
Android (android.graphics.Color)	4282655272 (0xFF442228)
YUV	44.8500, -2.3911, 20.3026
Hunter-Lab	15.8943, 9.6984, 2.4695

Details

The YIQ color **44.8500, 18.3380, 9.0740** is a dark color, and the websafe version is hex **663333**. A complement of this color would be **57.1500, -18.3380, -9.0740**, and the grayscale version is **45.0000, -0.0000, -0.0000**.

A 20% lighter version of the original color is **91.3450, 21.3180, 10.1340**, and **5.9800, 11.9200, 4.2400** is the 20% darker color. If you saturate the color by 10%, you get **40.0570, 22.1890, 10.8690**, and if you desaturate by 10%, it is **49.6430, 14.4870, 7.2790**.

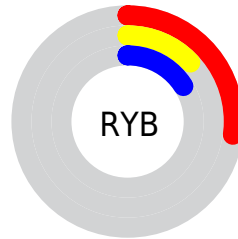
Distribution



Red (27%)

Green (13%)

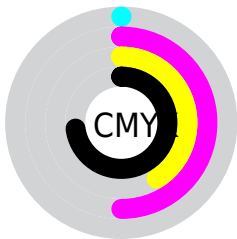
Blue (16%)



Red (27%)

Yellow (13%)

Blue (16%)

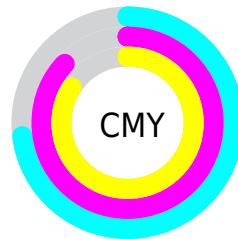


Cyan (0%)

Magenta (50%)

Yellow (41%)

Black (73%)



Cyan (73%)

Magenta (87%)

Yellow (84%)

Brightness & Saturation Gradients

These gradients show how the YIQ color 44.8500, 18.3380, 9.0740 changes by changing the brightness by 10 percent. The first figure shows a shift by +10% for each color and the second figure -10%.

Similar to the brightness gradients but the following saturation gradients show a change of the YIQ color 44.8500, 18.3380, 9.0740 by changing the saturation by 10% instead.

■ 44.8500, 18.3380,
9.0740

■ 44.8500, 18.3380,
9.0740

■ 255.0000, -0.0000,
-0.0000

■ 23.3660, 16.8250,
8.9610

■ 91.3450, 21.3180,
10.1340

■ 5.9800, 11.9200,
4.2400

■ 116.5300, 22.2350,
10.0350

■ 0.0000, 0.0000,
0.0000

■ 142.1280, 23.4270,
10.4590

■ 168.5410, 23.7020,
10.9820

■ 196.1390, 24.8940,
11.4060

■ 223.4380, 25.4900,

11.6180

243.7670, 8.2060,
5.4700

44.8500, 18.3380,
9.0740

44.8500, 18.3380,
9.0740

40.0570, 22.1890,
10.8690

49.6430, 14.4870,
7.2790

35.3780, 25.7190,
12.9750

54.3220, 10.9570,
5.1730

31.1720, 29.2950,
14.2470

58.5280, 7.3810,
3.9010

26.4930, 32.8250,
16.3530

63.2070, 3.8510,
1.7950

21.7000, 36.6760,
18.1480

68.0000, -0.0000,
0.0000

■ 72.7930, -3.8510,
-1.7950

■ 77.4720, -7.3810,
-3.9010

■ 81.6780, -10.9570,
-5.1730

■ 86.3570, -14.4870,
-7.2790

Harmonies

Analogous

The Analogous color harmony consists of three colors that are next to each other on the color wheel.



45.4240, 10.9100, 11.5340



44.8500, 18.3380, 9.0740



44.0580, 20.4480, 3.8720

Triad

The Triadic color harmony groups three colors that are evenly spaced from another and form a triangle on the color wheel.



44.8500, 18.3380, 9.0740



41.1920, -0.9610, -10.1210



37.3090, -31.7270, -3.2070

Complementary

The Complementary color scheme is a pair of colors which are on the opposite of each other on the color wheel.



44.8500, 18.3380, 9.0740



57.1500, -18.3380, -9.0740

Split Complementary

Split-complementary colors differ from the complementary color scheme. The scheme consists of three colors, the original color and two neighbors of the complement color.



36.1900, -33.0100, -7.4900



44.8500, 18.3380, 9.0740



38.4230, -14.8530, -11.6610

Square

The Square scheme is like the rectangle color scheme, but the four colors are evenly spaced on the color wheel.



44.8500, 18.3380, 9.0740



42.9330, 10.1340, -7.4500



35.4090, -29.4330, -11.7450



43.2620, -15.1770, 5.2310

Rectangle

The Rectangle color scheme consists of four colors that form a rectangle on the color wheel.



44.8500, 18.3380, 9.0740



44.0530, 18.8440, -0.1000



35.4090, -29.4330, -11.7450



36.2870, -34.6610, -5.1010

Sweetspot

The Sweet Spot groups the original color and five complimentary colors.



44.8500, 18.3380, 9.0740



80.1150, 7.1060, 3.3780



46.2480, 5.7740, 16.5100



40.5060, 4.4470, 2.0070



173.0000, -0.0000, 0.0000



46.0000, 0.0000, -0.0000

Same Dimension

The Same Dimension uses a secret algorithm to generate beautiful new colors.



44.8500, 18.3380, 9.0740



52.8730, 28.6990, 14.0350



50.6230, 17.2390, 1.4550



30.8970, 1.7880, 0.6360



30.9410, 52.3550, 25.8510



71.5360, 120.6640, 59.9280

Inverse Universe

The Inverse Universe completely reimagines the original color for something new.



44.8500, 18.3380, 9.0740



52.8730, 28.6990, 14.0350



51.3770, -17.2390, -1.4550



30.8970, 1.7880, 0.6360



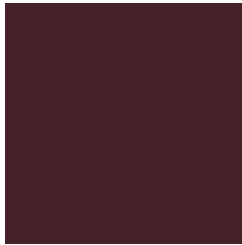
30.9410, 52.3550, 25.8510



71.5360, 120.6640, 59.9280

Previews

White Background



This preview shows how the YIQ color 44.8500, 18.3380, 9.0740 looks on a white background.

Color Contrast Check

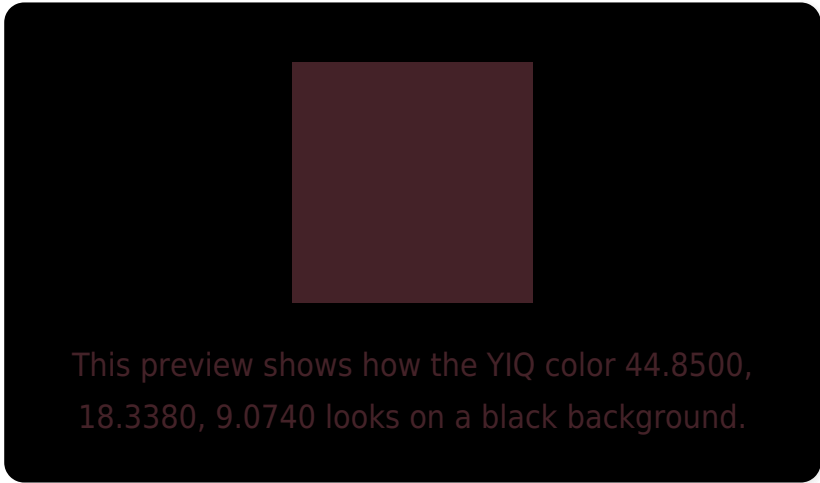
Large Text (above 18pt) WCAG AA ✓ Pass

Any Text WCAG AA ✓ Pass

Large Text (above 18pt) WCAG AAA ✓ Pass

Any Text WCAG AAA ✓ Pass

Black Background



Color Contrast Check

Large Text (above 18pt) WCAG AA × Fail

Any Text WCAG AA × Fail

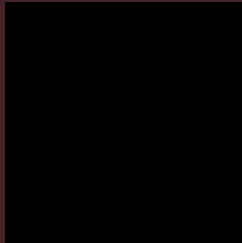
Large Text (above 18pt) WCAG AAA × Fail

Any Text WCAG AAA × Fail

If you want to check with other color combinations, try the [Color Contrast Checker](#).

YIQ 44.8500, 18.3380, 9.0740

Background



This preview shows how black text looks on a background with the YIQ color 44.8500, 18.3380, 9.0740.

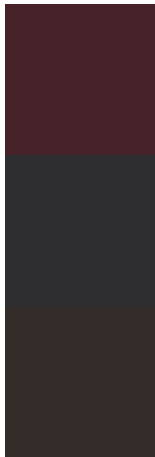


This preview shows how white text looks on a background with the YIQ color 44.8500, 18.3380,

Color Blindness Simulation

Color vision deficiency is a very complex topic, and I could not describe the different causes any better than Wikipedia does, so if you want to learn more, you should check out their [article about color blindness](#).

Dichromacy



Original Color

44.8500, 18.3380, 9.0740

Protanopia

44.5270, -0.0460, 0.8340

Deuteranopia

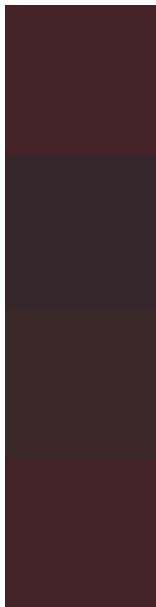
44.9360, 6.0520, 0.4520



Tritanopia

45.0950, 19.0260, 7.6180

Trichromacy



Original Color

44.8500, 18.3380, 9.0740

Protanomaly

44.3430, 6.4640, 4.0000

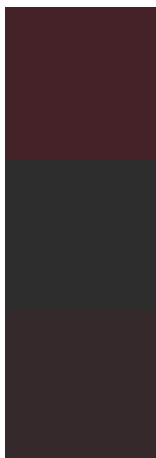
Deuteranomaly

44.9690, 10.4530, 3.2930

Tritanomaly

45.2090, 18.7050, 7.9290

Monochromacy



Original Color

44.8500, 18.3380, 9.0740

Achromatopsia

45.0000, -0.0000, -0.0000

Achromatomaly

44.8160, 6.5100, 3.1660

CSS Examples

Text

The CSS property to change the color of the text to YIQ 44.8500, 18.3380, 9.0740 is called "color". The color property can be set on classes, ids or directly on the HTML element.

This example shows how text in the color `rgb(68, 34, 40)` looks like.

```
.text, #text, p{  
    color:rgb(68, 34, 40)  
}
```

If you want to add a text shadow in that color use the text-shadow property, you can generate a text shadow directly with our [CSS Text Shadow Generator](#).

Here you see how black text with a 4 pixel rgb(68, 34, 40) colored shadow looks like.

```
.shadow{ text-shadow: 4px 4px 2px rgb(68, 34, 40) }
```

Border

The CSS property to change the border of an element to YIQ 44.8500, 18.3380, 9.0740 is called "border". The border property can be set on classes, ids or directly on the HTML element.

This example shows the color as border, it can be applied via the CSS property "border" or "border-color".

```
.border, #border, table{ border:4px solid rgb(68, 34, 40) }
```


If only the border color should be changed use the property `border-color`.

```
.border{ border-color:rgb(68, 34, 40) }
```

If you want to add a box shadow in that color use:

Here you see how a box with a 4 pixel `rgb(68, 34, 40)` colored shadow looks like.

```
.boxshadow{ -moz-box-shadow:4px 4px 4px  
4px rgb(68, 34, 40); -webkit-box-  
shadow:4px 4px 4px 4px rgb(68, 34, 40);  
box-shadow:4px 4px 4px 4px rgb(68, 34, 40)  
}
```

Background

The CSS property to change the background color of an element to YIQ 44.8500, 18.3380, 9.0740 is called "background". The background property can be set on classes, ids or directly on the HTML element.

```
.background, #background, body{  
background: rgb(68, 34, 40) }
```

If only the background color should be changed can be used:

```
.background{ background-color: rgb(68, 34,  
40) }
```

This example shows the color as background, it is applied via the CSS property "background".

To optimize and compress your CSS code, you can use our [online CSS compressor and optimizer](#) based on csstidy. If you want to create a linear or radial gradient as background or border, check our [CSS Gradient Generator](#).

Hey! You found this booklet interesting? Support Converting Colors with the new Membership Option!

The pro membership hides all ads, plus gives you double the colors in the color bucket, and more awesome pro features!

[Learn more, Memberships starting at \\$2.50/m!](#)

**Follow me
on Twitter!**

@ConvertingColor