

Converting Colors

YIQ(45.5000, 30.9470, 6.3310)

Have a look what the booklet for
YIQ(45.5000, 30.9470, 6.3310)
contains.

YIQ(45.5000, 30.9470, 6.3310)	3
<i>Conversions</i>	4
<i>Details</i>	6
<i>Harmonies</i>	12
<i>Previews</i>	24
<i>Color Blindness Simulation</i>	28
<i>CSS Examples</i>	31

Color

**YIQ(45.5000, 30.9470,
6.3310)**

Conversions

Conversions Part 1

Format	Color
Hex	4F2116
RGB	79, 33, 22
RGB Percent	31%, 13%, 9%
CMY	0.6901, 0.8707, 0.9136
CMYK	0.00, 0.58, 0.72, 0.69
HSL	12°, 56%, 20%
HSV	12°, 72%, 31%
XYZ	3.9151, 2.8081, 1.0964
YIQ	45.5000, 30.9470, 6.3310

Conversions

Conversions Part 2

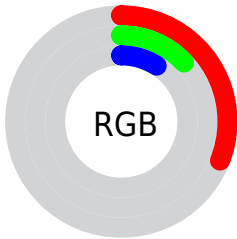
Format	Color
RYB	79, 36, 22
Decimal	5185814
CIELab	19.26, 20.70, 17.60
CIELCh	19, 27.174, 40.371
Yxy	2.8081, 0.5007, 0.3591
Android (android.graphics.Color)	4283375894 (0xFF4F2116)
YUV	45.5000, -11.5855, 29.3795
Hunter-Lab	16.7573, 12.3784, 7.8508

Details

The YIQ color **45.5000, 30.9470, 6.3310** is a dark color, and the websafe version is hex **663333**. A complement of this color would be **55.5000, -30.9470, -6.3310**, and the grayscale version is **46.0000, 0.0000, -0.0000**.

A 20% lighter version of the original color is **93.2510, 36.0820, 6.8820**, and **9.3830, 18.1550, 6.8830** is the 20% darker color. If you saturate the color by 10%, you get **41.0660, 35.1650, 6.9810**, and if you desaturate by 10%, it is **49.9340, 26.7290, 5.6810**.

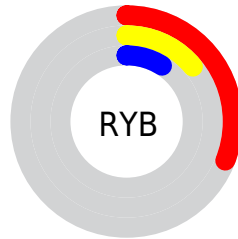
Distribution



 Red (31%)

 Green (13%)

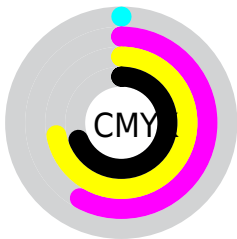
 Blue (9%)




 Red (31%)

 Yellow (14%)

 Blue (9%)

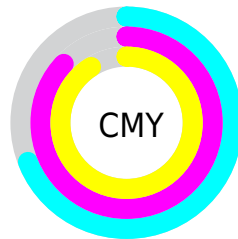


 Cyan (0%)


 Magenta (58%)

 Yellow (72%)

 Black (69%)



 Cyan (69%)

 Magenta (87%)

 Yellow (91%)

Brightness & Saturation Gradients

These gradients show how the YIQ color 45.5000, 30.9470, 6.3310 changes by changing the brightness by 10 percent. The first figure shows a shift by +10% for each color and the second figure -10%.

Similar to the brightness gradients but the following saturation gradients show a change of the YIQ color 45.5000, 30.9470, 6.3310 by changing the saturation by 10% instead.

45.5000, 30.9470,
6.3310

45.5000, 30.9470,
6.3310

254.2020, 2.2470,
-2.1770

22.9020, 29.7550,
5.9070

93.2510, 36.0820,
6.8820

9.3830, 18.1550,
6.8830

118.0340, 38.1910,
7.2070

0.0000, 0.0000,
0.0000

143.9310, 39.9790,
7.8430

171.3010, 41.8130,
7.6450

198.8990, 43.0050,
8.0690

220.8160, 32.8730,

4.4650

■ 241.0310, 15.9100,
-1.9940

■ 45.5000, 30.9470,
6.3310

■ 45.5000, 30.9470,
6.3310

■ 41.0660, 35.1650,
6.9810

■ 49.9340, 26.7290,
5.6810

■ 36.0450, 39.6580,
8.1540

■ 54.9550, 22.2360,
4.5080

■ 32.4260, 42.9590,
8.9030

■ 59.3890, 18.0180,
3.8580

■ 64.4100, 13.5250,
2.6850

■ 68.8440, 9.3070,
2.0350

■ 73.1640, 5.4100,
1.0740

■ 78.1850, 0.9170,
-0.0990

■ 82.6190, -3.3010,
-0.7490

■ 87.0530, -7.5190,
-1.3990

Harmonies

Analogous

The Analogous color harmony consists of three colors that are next to each other on the color wheel.



45.9270, 28.6070, 15.7030



45.5000, 30.9470, 6.3310



44.9690, 27.6480, -5.4720

Triad

The Triadic color harmony groups three colors that are evenly spaced from another and form a triangle on the color wheel.



45.5000, 30.9470, 6.3310



36.0470, -25.7180, -18.5020



43.0740, -29.2070, 6.1930

Complementary

The Complementary color scheme is a pair of colors which are on the opposite of each other on the color wheel.



45.5000, 30.9470, 6.3310



55.5000, -30.9470, -6.3310

Split Complementary

Split-complementary colors differ from the complementary color scheme. The scheme consists of three colors, the original color and two neighbors of the complement color.



40.1000, -41.2640, -1.0720



45.5000, 30.9470, 6.3310



38.9140, -32.4130, -12.8050

Square

The Square scheme is like the rectangle color scheme, but the four colors are evenly spaced on the color wheel.



45.5000, 30.9470, 6.3310



41.3780, -1.7850, -17.2170



40.4930, -38.2370, -6.3730



48.1270, -1.1950, 16.1570

Rectangle

The Rectangle color scheme consists of four colors that form a rectangle on the color wheel.



45.5000, 30.9470, 6.3310



44.1590, 21.0010, -11.6630



40.4930, -38.2370, -6.3730



38.5670, -41.0810, 1.1190

Sweetspot

The Sweet Spot groups the original color and five complimentary colors.



45.5000, 30.9470, 6.3310



88.9260, 12.0120, 2.5720



44.4010, 18.8850, 26.7010



43.0610, 7.1980, 1.7100



179.0000, -0.0000, -0.0000



51.0000, -0.0000, -0.0000

Same Dimension

The Same Dimension uses a secret algorithm to generate beautiful new colors.



45.5000, 30.9470, 6.3310



49.5900, 48.3690, 9.9770



61.9360, 23.2470, -8.3130



35.7830, 2.1090, 0.3250



42.2380, 55.2920, 11.1640



94.5980, 124.9800, 25.7480

Inverse Universe

The Inverse Universe completely reimagines the original color for something new.



55.5000, -30.9470, -6.3310



65.4100, -48.3690, -9.9770



39.0640, -23.2470, 8.3130



36.8040, -2.3840, -0.8480



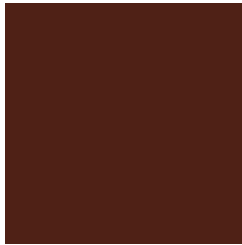
59.7620, -55.2920, -11.1640



134.8150, -124.7050, -25.2250

Previews

White Background



This preview shows how the YIQ color 45.5000, 30.9470, 6.3310 looks on a white background.

Color Contrast Check

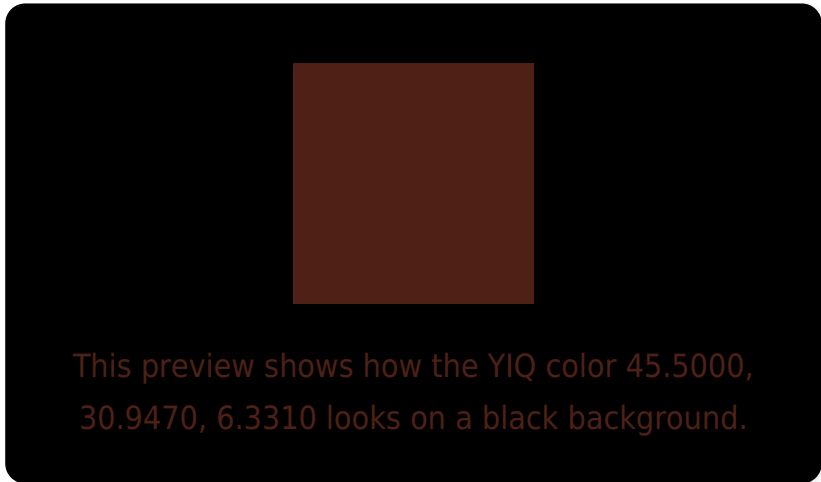
Large Text (above 18pt) WCAG AA ✓ Pass

Any Text WCAG AA ✓ Pass

Large Text (above 18pt) WCAG AAA ✓ Pass

Any Text WCAG AAA ✓ Pass

Black Background



Color Contrast Check

Large Text (above 18pt) WCAG AA × Fail

Any Text WCAG AA × Fail

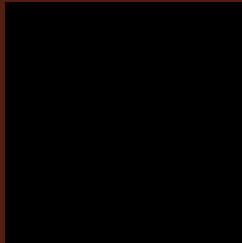
Large Text (above 18pt) WCAG AAA × Fail

Any Text WCAG AAA × Fail

If you want to check with other color combinations, try the [Color Contrast Checker](#).

YIQ 45.5000, 30.9470, 6.3310

Background



This preview shows how black text looks on a background with the YIQ color 45.5000, 30.9470, 6.3310.

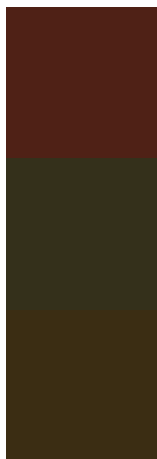


This preview shows how white text looks on a background with the YIQ color 45.5000, 30.9470,

Color Blindness Simulation

Color vision deficiency is a very complex topic, and I could not describe the different causes any better than Wikipedia does, so if you want to learn more, you should check out their [article about color blindness](#).

Dichromacy



Original Color

45.5000, 30.9470, 6.3310

Protanopia

46.8020, 9.1250, -5.6830

Deuteranopia

46.2220, 16.6900, -5.1180



Tritanopia

46.5800, 27.9660, 10.7980

Trichromacy



Original Color

45.5000, 30.9470, 6.3310

Protanomaly

46.6290, 17.1020, -1.5700

Deuteranomaly

46.0810, 21.6410, -1.2310

Tritanomaly

46.1240, 29.2500, 9.5540

Monochromacy



Original Color

45.5000, 30.9470, 6.3310

Achromatopsia

46.0000, 0.0000, -0.0000

Achromatomaly

45.6270, 11.4160, 2.3600

CSS Examples

Text

The CSS property to change the color of the text to YIQ 45.5000, 30.9470, 6.3310 is called "color". The color property can be set on classes, ids or directly on the HTML element.

This example shows how text in the color `rgb(79, 33, 22)` looks like.

```
.text, #text, p{  
    color:rgb(79, 33, 22)  
}
```

If you want to add a text shadow in that color use the text-shadow property, you can generate a text shadow directly with our [CSS Text Shadow Generator](#).

Here you see how black text with a 4 pixel rgb(79, 33, 22) colored shadow looks like.

```
.shadow{ text-shadow: 4px 4px 2px rgb(79, 33, 22) }
```

Border

The CSS property to change the border of an element to YIQ 45.5000, 30.9470, 6.3310 is called "border". The border property can be set on classes, ids or directly on the HTML element.

This example shows the color as border, it can be applied via the CSS property "border" or "border-color".

```
.border, #border, table{ border:4px solid rgb(79, 33, 22) }
```


If only the border color should be changed use the property `border-color`.

```
.border{ border-color:rgb(79, 33, 22) }
```

If you want to add a box shadow in that color use:

Here you see how a box with a 4 pixel `rgb(79, 33, 22)` colored shadow looks like.

```
.boxshadow{ -moz-box-shadow:4px 4px 4px  
4px rgb(79, 33, 22); -webkit-box-  
shadow:4px 4px 4px 4px rgb(79, 33, 22);  
box-shadow:4px 4px 4px 4px rgb(79, 33, 22)  
}
```

Background

The CSS property to change the background color of an element to YIQ 45.5000, 30.9470, 6.3310 is called "background". The background property can be set on classes, ids or directly on the HTML element.

```
.background, #background, body{  
background: rgb(79, 33, 22) }
```

If only the background color should be changed can be used:

```
.background{ background-color: rgb(79, 33,  
22) }
```

This example shows the color as background, it is applied via the CSS property "background".

To optimize and compress your CSS code, you can use our [online CSS compressor and optimizer](#) based on csstidy. If you want to create a linear or radial gradient as background or border, check our [CSS Gradient Generator](#).

Hey! You found this booklet interesting? Support Converting Colors with the new Membership Option!

The pro membership hides all ads, plus gives you double the colors in the color bucket, and more awesome pro features!

[Learn more, Memberships starting at \\$2.50/m!](#)

**Follow me
on Twitter!**

@ConvertingColor