

Converting Colors

YIQ(45.8020, 18.2930, 4.3810)

Have a look what the booklet for
YIQ(45.8020, 18.2930, 4.3810)
contains.

| | |
|--|----|
| YIQ(45.8020, 18.2930, 4.3810) | 3 |
| <i>Conversions</i> | 4 |
| <i>Details</i> | 6 |
| <i>Harmonies</i> | 12 |
| <i>Previews</i> | 24 |
| <i>Color Blindness Simulation</i> | 28 |
| <i>CSS Examples</i> | 31 |

Color

**YIQ(45.8020, 18.2930,
4.3810)**

Conversions

Conversions Part 1

| Format | Color |
|-------------|--------------------------|
| Hex | 422621 |
| RGB | 66, 38, 33 |
| RGB Percent | 26%, 15%, 13% |
| CMY | 0.7411, 0.8510, 0.8705 |
| CMYK | 0.00, 0.42, 0.50, 0.74 |
| HSL | 9°, 33%, 19% |
| HSV | 9°, 50%, 26% |
| XYZ | 3.2154, 2.6542, 1.7831 |
| YIQ | 45.8020, 18.2930, 4.3810 |

Conversions

Conversions Part 2

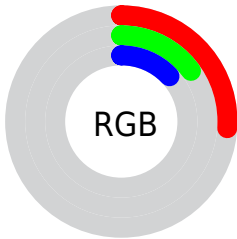
| Format | Color |
|-------------------------------------|------------------------------|
| R_{YB} | 66, 39, 33 |
| Decimal | 4335137 |
| CIE Lab | 18.60, 12.56, 8.87 |
| CIE LCh | 19, 15.378, 35.225 |
| Yxy | 2.6542, 0.4202, 0.3468 |
| Android (android.graphics.Color) | 4282525217 (0xFF422621) |
| YUV | 45.8020, -6.3114, 17.7136 |
| Hunter-Lab | 16.2917, 6.7188, 4.9149 |

Details

The YIQ color **45.8020, 18.2930, 4.3810** is a dark color, and the websafe version is hex **663333**. A complement of this color would be **53.1980, -18.2930, -4.3810**, and the grayscale version is **46.0000, 0.0000, -0.0000**.

A 20% lighter version of the original color is **91.8840, 20.9980, 4.9180**, and **4.7840, 9.5360, 3.3920** is the 20% darker color. If you saturate the color by 10%, you get **41.4820, 22.1900, 5.3420**, and if you desaturate by 10%, it is **50.1220, 14.3960, 3.4200**.

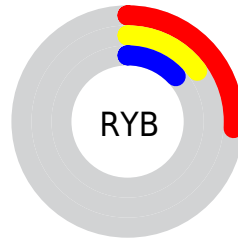
Distribution



 Red (26%)

 Green (15%)

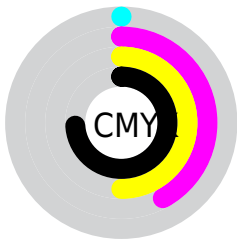
 Blue (13%)



 Red (26%)

 Yellow (15%)

 Blue (13%)

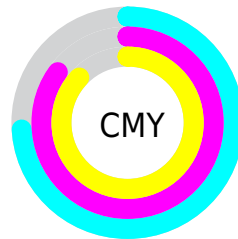


 Cyan (0%)

 Magenta (42%)

 Yellow (50%)

 Black (74%)



 Cyan (74%)

 Magenta (85%)

 Yellow (87%)

Brightness & Saturation Gradients

These gradients show how the YIQ color 45.8020, 18.2930, 4.3810 changes by changing the brightness by 10 percent. The first figure shows a shift by +10% for each color and the second figure -10%.

Similar to the brightness gradients but the following saturation gradients show a change of the YIQ color 45.8020, 18.2930, 4.3810 by changing the saturation by 10% instead.

■ 45.8020, 18.2930,
4.3810

■ 45.8020, 18.2930,
4.3810

■ 255.0000, -0.0000,
-0.0000

■ 23.9760, 17.7430,
3.3350

■ 92.1830, 21.5940,
5.1300

■ 4.7840, 9.5360,
3.3920

■ 117.3680, 22.5110,
5.0310

■ 0.0000, 0.0000,
0.0000

■ 142.6670, 23.1070,
5.2430

■ 169.2650, 24.2990,
5.6670

■ 196.5640, 24.8950,
5.8790

■ 224.7490, 25.8120,

5.7800

244.9750, 10.3160,
0.2680

45.8020, 18.2930,
4.3810

45.8020, 18.2930,
4.3810

41.4820, 22.1900,
5.3420

50.1220, 14.3960,
3.4200

37.8630, 25.4910,
6.0910

53.7410, 11.0950,
2.6710

33.5430, 29.3880,
7.0520

58.0610, 7.1980,
1.7100

29.9240, 32.6890,
7.8010

61.6800, 3.8970,
0.9610

25.6040, 36.5860,
8.7620

66.0000, -0.0000,
-0.0000

■ 70.3200, -3.8970,
-0.9610

■ 73.9390, -7.1980,
-1.7100

■ 78.2590, -11.0950,
-2.6710

■ 81.8780, -14.3960,
-3.4200

Harmonies

Analogous

The Analogous color harmony consists of three colors that are next to each other on the color wheel.



46.7680, 15.6330, 8.5370



45.8020, 18.2930, 4.3810



44.8570, 16.4600, -0.9480

Triad

The Triadic color harmony groups three colors that are evenly spaced from another and form a triangle on the color wheel.



45.8020, 18.2930, 4.3810



40.9290, -10.4060, -9.6540



44.2080, -15.0850, 3.5630

Complementary

The Complementary color scheme is a pair of colors which are on the opposite of each other on the color wheel.



45.8020, 18.2930, 4.3810



53.1980, -18.2930, -4.3810

Split Complementary

Split-complementary colors differ from the complementary color scheme. The scheme consists of three colors, the original color and two neighbors of the complement color.



39.7610, -27.1880, -2.8680



45.8020, 18.2930, 4.3810



37.9860, -23.7480, -10.1480

Square

The Square scheme is like the rectangle color scheme, but the four colors are evenly spaced on the color wheel.



45.8020, 18.2930, 4.3810



42.9150, 1.3770, -8.4390



36.5490, -32.6430, -8.6350



46.4870, -2.5690, 8.0150

Rectangle

The Rectangle color scheme consists of four colors that form a rectangle on the color wheel.



45.8020, 18.2930, 4.3810



44.5960, 12.7010, -4.4110



36.5490, -32.6430, -8.6350



43.0010, -18.9360, 1.7680

Sweetspot

The Sweet Spot groups the original color and five complimentary colors.



45.8020, 18.2930, 4.3810



79.0610, 7.1980, 1.7100



46.0590, 10.6800, 15.7040



38.6800, 3.8970, 0.9610



171.0000, -0.0000, -0.0000



43.0000, -0.0000, -0.0000

Same Dimension

The Same Dimension uses a secret algorithm to generate beautiful new colors.



45.8020, 18.2930, 4.3810



55.2440, 28.7920, 6.8400



55.1940, 13.8930, -3.9870



30.8970, 1.7880, 0.6360



37.8080, 53.6870, 12.7190



86.9340, 124.1540, 29.7060

Inverse Universe

The Inverse Universe completely reimagines the original color for something new.



53.1980, -18.2930, -4.3810



66.7560, -28.7920, -6.8400



43.8060, -13.8930, 3.9870



32.1030, -1.7880, -0.6360



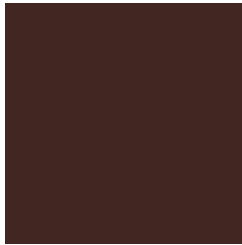
59.1920, -53.6870, -12.7190



137.6530, -124.4290, -30.2290

Previews

White Background



This preview shows how the YIQ color 45.8020, 18.2930, 4.3810 looks on a white background.

Color Contrast Check

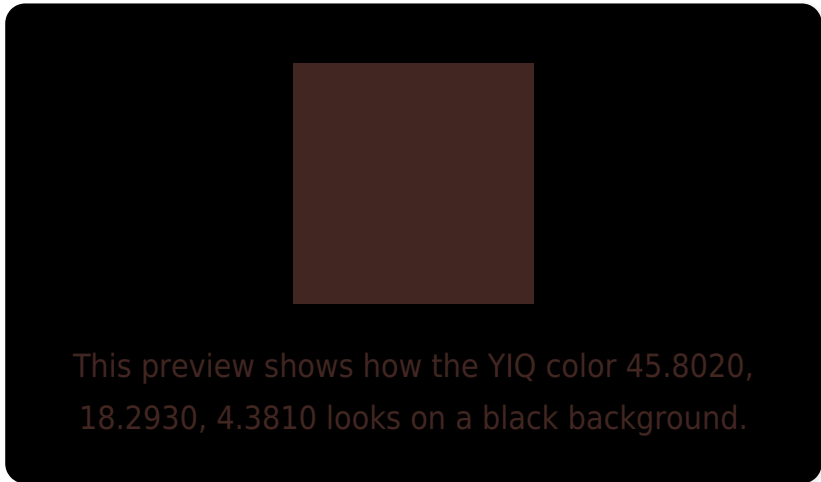
Large Text (above 18pt) WCAG AA ✓ Pass

Any Text WCAG AA ✓ Pass

Large Text (above 18pt) WCAG AAA ✓ Pass

Any Text WCAG AAA ✓ Pass

Black Background



Color Contrast Check

Large Text (above 18pt) WCAG AA × Fail

Any Text WCAG AA × Fail

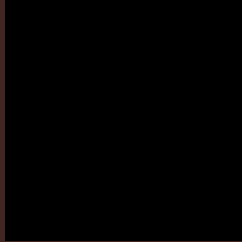
Large Text (above 18pt) WCAG AAA × Fail

Any Text WCAG AAA × Fail

If you want to check with other color combinations, try the [Color Contrast Checker](#).

YIQ 45.8020, 18.2930, 4.3810

Background



This preview shows how black text looks on a background with the YIQ color 45.8020, 18.2930, 4.3810.

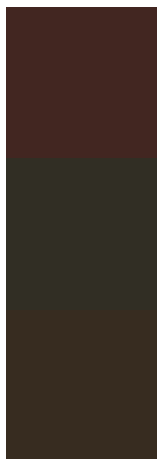


This preview shows how white text looks on a background with the YIQ color 45.8020, 18.2930,

Color Blindness Simulation

Color vision deficiency is a very complex topic, and I could not describe the different causes any better than Wikipedia does, so if you want to learn more, you should check out their [article about color blindness](#).

Dichromacy



Original Color

45.8020, 18.2930, 4.3810

Protanopia

45.7570, 4.9980, -2.4740

Deuteranopia

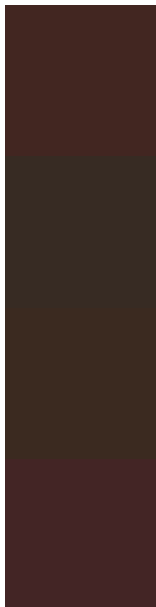
45.9210, 10.4080, -1.4000



Tritanopia

46.3120, 16.9170, 7.2930

Trichromacy



Original Color

45.8020, 18.2930, 4.3810

Protanomaly

45.6760, 9.7200, 0.0560

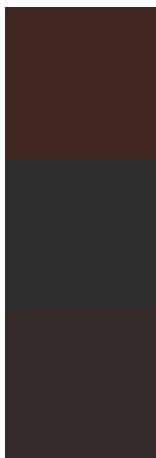
Deuteranomaly

45.9430, 13.3420, 0.4940

Tritanomaly

45.9700, 17.8800, 6.3600

Monochromacy



Original Color

45.8020, 18.2930, 4.3810

Achromatopsia

46.0000, 0.0000, -0.0000

Achromatomaly

45.7620, 6.6020, 1.4980

CSS Examples

Text

The CSS property to change the color of the text to YIQ 45.8020, 18.2930, 4.3810 is called "color". The color property can be set on classes, ids or directly on the HTML element.

This example shows how text in the color `rgb(66, 38, 33)` looks like.

```
.text, #text, p{  
    color:rgb(66, 38, 33)  
}
```

If you want to add a text shadow in that color use the text-shadow property, you can generate a text shadow directly with our [CSS Text Shadow Generator](#).

Here you see how black text with a 4 pixel rgb(66, 38, 33) colored shadow looks like.

```
.shadow{ text-shadow: 4px 4px 2px rgb(66, 38, 33) }
```

Border

The CSS property to change the border of an element to YIQ 45.8020, 18.2930, 4.3810 is called "border". The border property can be set on classes, ids or directly on the HTML element.

This example shows the color as border, it can be applied via the CSS property "border" or "border-color".

```
.border, #border, table{ border:4px solid rgb(66, 38, 33) }
```


If only the border color should be changed use the property `border-color`.

```
.border{ border-color:rgb(66, 38, 33) }
```

If you want to add a box shadow in that color use:

Here you see how a box with a 4 pixel `rgb(66, 38, 33)` colored shadow looks like.

```
.boxshadow{ -moz-box-shadow:4px 4px 4px  
4px rgb(66, 38, 33); -webkit-box-  
shadow:4px 4px 4px 4px rgb(66, 38, 33);  
box-shadow:4px 4px 4px 4px rgb(66, 38, 33)  
}
```

Background

The CSS property to change the background color of an element to YIQ 45.8020, 18.2930, 4.3810 is called "background". The background property can be set on classes, ids or directly on the HTML element.

```
.background, #background, body{  
background: rgb(66, 38, 33) }
```

If only the background color should be changed can be used:

```
.background{ background-color: rgb(66, 38,  
33) }
```

This example shows the color as background, it is applied via the CSS property "background".

To optimize and compress your CSS code, you can use our [online CSS compressor and optimizer](#) based on csstidy. If you want to create a linear or radial gradient as background or border, check our [CSS Gradient Generator](#).

Hey! You found this booklet
interesting? Support Converting
Colors with the new Membership
Option!

The pro membership hides all ads, plus gives you
double the colors in the color bucket, and more
awesome pro features!

[Learn more, Memberships starting at \\$2.50/m!](#)

**Follow me
on Twitter!**

@ConvertingColor