

Converting Colors

YIQ(46.6760, 18.8880, 10.1200)

Have a look what the booklet for
YIQ(46.6760, 18.8880, 10.1200)
contains.

YIQ(46.6760, 18.8880, 10.1200)	3
<i>Conversions</i>	4
<i>Details</i>	6
<i>Harmonies</i>	12
<i>Previews</i>	24
<i>Color Blindness Simulation</i>	28
<i>CSS Examples</i>	31

Color

**YIQ(46.6760, 18.8880,
10.1200)**

Conversions

Conversions Part 1

Format	Color
Hex	47232B
RGB	71, 35, 43
RGB Percent	28%, 14%, 17%
CMY	0.7215, 0.8628, 0.8313
CMYK	0.00, 0.51, 0.39, 0.72
HSL	347°, 34%, 21%
HSV	347°, 51%, 28%
XYZ	3.6372, 2.7162, 2.6198
YIQ	46.6760, 18.8880, 10.1200

Conversions

Conversions Part 2

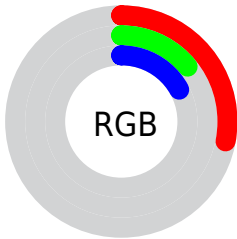
Format	Color
RYB	71, 35, 43
Decimal	4662059
CIELab	18.87, 18.19, 2.38
CIELCh	19, 18.348, 7.457
Yxy	2.7162, 0.4053, 0.3027
Android (android.graphics.Color)	4282852139 (0xFF47232B)
YUV	46.6760, -1.8123, 21.3321
Hunter-Lab	16.4809, 10.5519, 2.1120

Details

The YIQ color **46.6760, 18.8880, 10.1200** is a dark color, and the websafe version is hex **663333**. A complement of this color would be **59.3240, -18.8880, -10.1200**, and the grayscale version is **47.0000, 0.0000, 0.0000**.

A 20% lighter version of the original color is **93.7580, 21.5930, 10.6570**, and **7.8880, 15.1750, 5.8230** is the 20% darker color. If you saturate the color by 10%, you get **41.8830, 22.7390, 11.9150**, and if you desaturate by 10%, it is **51.4690, 15.0370, 8.3250**.

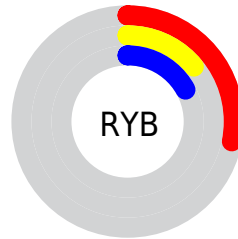
Distribution



Red (28%)

Green (14%)

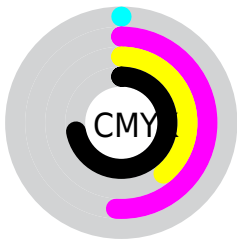
Blue (17%)



Red (28%)

Yellow (14%)

Blue (17%)

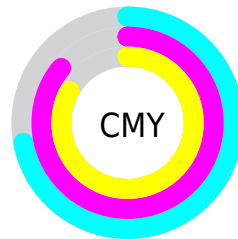


Cyan (0%)

Magenta (51%)

Yellow (39%)

Black (72%)



Cyan (72%)

Magenta (86%)

Yellow (83%)

Brightness & Saturation Gradients

These gradients show how the YIQ color 46.6760, 18.8880, 10.1200 changes by changing the brightness by 10 percent. The first figure shows a shift by +10% for each color and the second figure -10%.

Similar to the brightness gradients but the following saturation gradients show a change of the YIQ color 46.6760, 18.8880, 10.1200 by changing the saturation by 10% instead.

■ 46.6760, 18.8880,
10.1200

■ 46.6760, 18.8880,
10.1200

■ 255.0000, -0.0000,
-0.0000

■ 24.8930, 16.7790,
9.7950

■ 93.1710, 21.8680,
11.1800

■ 7.8880, 15.1750,
5.8230

■ 118.4700, 22.4640,
11.3920

■ 0.0000, 0.0000,
0.0000

■ 144.0680, 23.6560,
11.8160

■ 170.6660, 24.8480,
12.2400

■ 197.9650, 25.4440,
12.4520

■ 225.0680, 23.6560,

11.8160

245.3970, 6.3720,
5.6680

46.6760, 18.8880,
10.1200

46.6760, 18.8880,
10.1200

41.8830, 22.7390,
11.9150

51.4690, 15.0370,
8.3250

37.2040, 26.2690,
14.0210

56.1480, 11.5070,
6.2190

32.4110, 30.1200,
15.8160

60.9410, 7.6560,
4.4240

27.7320, 33.6500,
17.9220

65.6200, 4.1260,
2.3180

23.0530, 37.1800,
20.0280

70.4130, 0.2750,
0.5230

■ 75.6790, -3.5300,
-2.1060

■ 80.4720, -7.3810,
-3.9010

■ 85.1510, -10.9110,
-6.0070

■ 89.9440, -14.7620,
-7.8020

Harmonies

Analogous

The Analogous color harmony consists of three colors that are next to each other on the color wheel.



47.5380, 10.5890, 11.8450



46.6760, 18.8880, 10.1200



46.0690, 21.9150, 4.8190

Triad

The Triadic color harmony groups three colors that are evenly spaced from another and form a triangle on the color wheel.



46.6760, 18.8880, 10.1200



43.1490, 0.5980, -10.8420



37.3300, -36.2200, -4.3800

Complementary

The Complementary color scheme is a pair of colors which are on the opposite of each other on the color wheel.



46.6760, 18.8880, 10.1200



59.3240, -18.8880, -10.1200

Split Complementary

Split-complementary colors differ from the complementary color scheme. The scheme consists of three colors, the original color and two neighbors of the complement color.



37.5920, -34.2020, -7.9140



46.6760, 18.8880, 10.1200



40.1950, -14.2110, -12.2830

Square

The Square scheme is like the rectangle color scheme, but the four colors are evenly spaced on the color wheel.



46.6760, 18.8880, 10.1200



44.4170, 11.6470, -7.3370



36.6970, -30.3040, -12.4800



44.4790, -17.2860, 4.9060

Rectangle

The Rectangle color scheme consists of four colors that form a rectangle on the color wheel.



46.6760, 18.8880, 10.1200



45.6510, 20.0360, 0.3240



36.6970, -30.3040, -12.4800



37.6890, -35.8530, -5.5250

Sweetspot

The Sweet Spot groups the original color and five complimentary colors.



46.6760, 18.8880, 10.1200



82.5280, 7.3810, 3.9010



47.4760, 5.1320, 17.1320



40.5060, 4.4470, 2.0070



173.0000, -0.0000, 0.0000



46.0000, 0.0000, -0.0000

Same Dimension

The Same Dimension uses a secret algorithm to generate beautiful new colors.



46.6760, 18.8880, 10.1200



54.1120, 29.5240, 15.6040



51.6340, 18.7060, 2.4020



33.3100, 2.0630, 1.1590



32.1090, 51.9420, 27.8300



73.6870, 118.9210, 63.9850

Inverse Universe

The Inverse Universe completely reimagines the original color for something new.



46.6760, 18.8880, 10.1200



54.1120, 29.5240, 15.6040



54.3660, -18.7060, -2.4020



33.3100, 2.0630, 1.1590



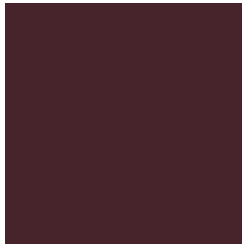
32.1090, 51.9420, 27.8300



73.6870, 118.9210, 63.9850

Previews

White Background



This preview shows how the YIQ color 46.6760, 18.8880, 10.1200 looks on a white background.

Color Contrast Check

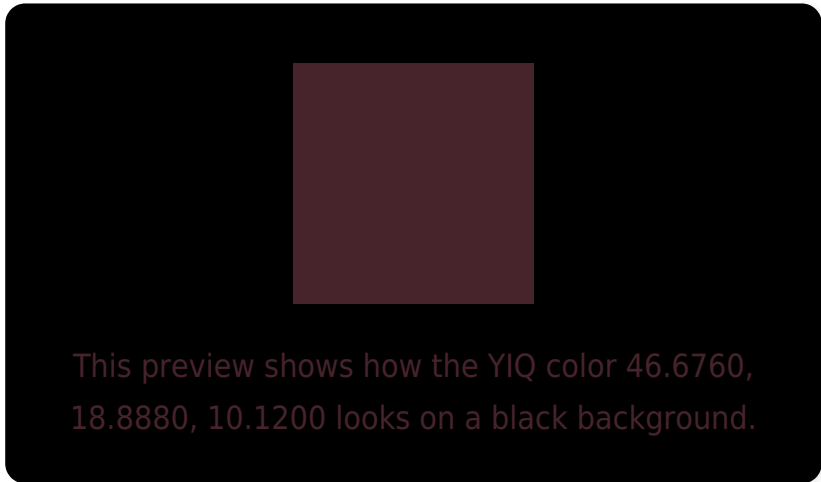
Large Text (above 18pt) WCAG AA ✓ Pass

Any Text WCAG AA ✓ Pass

Large Text (above 18pt) WCAG AAA ✓ Pass

Any Text WCAG AAA ✓ Pass

Black Background



Color Contrast Check

Large Text (above 18pt) WCAG AA × Fail

Any Text WCAG AA × Fail

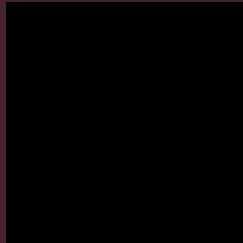
Large Text (above 18pt) WCAG AAA × Fail

Any Text WCAG AAA × Fail

If you want to check with other color combinations, try the [Color Contrast Checker](#).

YIQ 46.6760, 18.8880, 10.1200

Background



This preview shows how black text looks on a background with the YIQ color 46.6760, 18.8880, 10.1200.



This preview shows how white text looks on a background with the YIQ color 46.6760, 18.8880,

Color Blindness Simulation

Color vision deficiency is a very complex topic, and I could not describe the different causes any better than Wikipedia does, so if you want to learn more, you should check out their [article about color blindness](#).

Dichromacy



Original Color

46.6760, 18.8880, 10.1200

Protanopia

46.6410, -0.3670, 1.1450

Deuteranopia

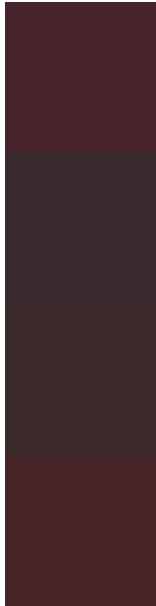
46.9360, 6.0520, 0.4520



Tritanopia

46.6930, 20.2180, 8.0420

Trichromacy



Original Color

46.6760, 18.8880, 10.1200

Protanomaly

46.7560, 6.7390, 4.5230

Deuteranomaly

46.7950, 11.0030, 4.3390

Tritanomaly

46.9210, 19.5760, 8.6640

Monochromacy



Original Color

46.6760, 18.8880, 10.1200

Achromatopsia

47.0000, 0.0000, 0.0000

Achromatomaly

47.2290, 6.7850, 3.6890

CSS Examples

Text

The CSS property to change the color of the text to YIQ 46.6760, 18.8880, 10.1200 is called "color". The color property can be set on classes, ids or directly on the HTML element.

This example shows how text in the color `rgb(71, 35, 43)` looks like.

```
.text, #text, p{  
    color:rgb(71, 35, 43)  
}
```

If you want to add a text shadow in that color use the text-shadow property, you can generate a text shadow directly with our [CSS Text Shadow Generator](#).

Here you see how black text with a 4 pixel rgb(71, 35, 43) colored shadow looks like.

```
.shadow{ text-shadow: 4px 4px 2px rgb(71, 35, 43) }
```

Border

The CSS property to change the border of an element to YIQ 46.6760, 18.8880, 10.1200 is called "border". The border property can be set on classes, ids or directly on the HTML element.

This example shows the color as border, it can be applied via the CSS property "border" or "border-color".

```
.border, #border, table{ border:4px solid rgb(71, 35, 43) }
```


If only the border color should be changed use the property `border-color`.

```
.border{ border-color:rgb(71, 35, 43) }
```

If you want to add a box shadow in that color use:

Here you see how a box with a 4 pixel `rgb(71, 35, 43)` colored shadow looks like.

```
.boxshadow{ -moz-box-shadow:4px 4px 4px  
4px rgb(71, 35, 43); -webkit-box-  
shadow:4px 4px 4px 4px rgb(71, 35, 43);  
box-shadow:4px 4px 4px 4px rgb(71, 35, 43)  
}
```

Background

The CSS property to change the background color of an element to YIQ 46.6760, 18.8880, 10.1200 is called "background". The background property can be set on classes, ids or directly on the HTML element.

```
.background, #background, body{  
background: rgb(71, 35, 43) }
```

If only the background color should be changed can be used:

```
.background{ background-color: rgb(71, 35,  
43) }
```

This example shows the color as background, it is applied via the CSS property "background".

To optimize and compress your CSS code, you can use our [online CSS compressor and optimizer](#) based on csstidy. If you want to create a linear or radial gradient as background or border, check our [CSS Gradient Generator](#).

Hey! You found this booklet interesting? Support Converting Colors with the new Membership Option!

The pro membership hides all ads, plus gives you double the colors in the color bucket, and more awesome pro features!

[Learn more, Memberships starting at \\$2.50/m!](#)

**Follow me
on Twitter!**

@ConvertingColor