

Converting Colors

YIQ(46.7740, 15.4960, 5.5120)

Have a look what the booklet for
YIQ(46.7740, 15.4960, 5.5120)
contains.

YIQ(46.7740, 15.4960, 5.5120)	3
<i>Conversions</i>	4
<i>Details</i>	6
<i>Harmonies</i>	12
<i>Previews</i>	24
<i>Color Blindness Simulation</i>	28
<i>CSS Examples</i>	31

Color

**YIQ(46.7740, 15.4960,
5.5120)**

Conversions

Conversions Part 1

Format	Color
Hex	412727
RGB	65, 39, 39
RGB Percent	25%, 15%, 15%
CMY	0.7450, 0.8471, 0.8470
CMYK	0.00, 0.40, 0.40, 0.75
HSL	360°, 25%, 20%
HSV	360°, 40%, 25%
XYZ	3.2726, 2.7213, 2.2736
YIQ	46.7740, 15.4960, 5.5120

Conversions

Conversions Part 2

Format	Color
R_{YB}	65, 39, 39
Decimal	4269863
CIE Lab	18.89, 12.27, 5.08
CIE LCh	19, 13.282, 22.501
Yxy	2.7213, 0.3958, 0.3292
Android (android.graphics.Color)	4282459943 (0xFF412727)
YUV	46.7740, -3.8326, 15.9842
Hunter-Lab	16.4963, 6.5437, 3.3758

Details

The YIQ color **46.7740, 15.4960, 5.5120** is a dark color, and the websafe version is hex **333333**. A complement of this color would be **57.2260, -15.4960, -5.5120**, and the grayscale version is **47.0000, 0.0000, 0.0000**.

A 20% lighter version of the original color is **92.9700, 17.8800, 6.3600**, and **5.3820, 10.7280, 3.8160** is the 20% darker color. If you saturate the color by 10%, you get **41.9810, 19.3470, 7.3070**, and if you desaturate by 10%, it is **51.0940, 11.5990, 4.5510**.

Distribution



Red (25%)

Green (15%)

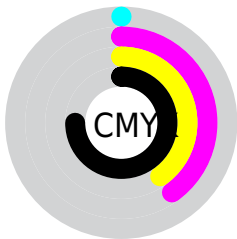
Blue (15%)



Red (25%)

Yellow (15%)

Blue (15%)

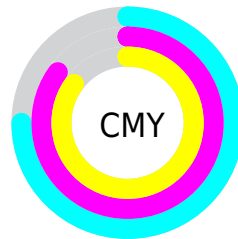


Cyan (0%)

Magenta (40%)

Yellow (40%)

Black (75%)



Cyan (75%)

Magenta (85%)

Yellow (85%)

Brightness & Saturation Gradients

These gradients show how the YIQ color 46.7740, 15.4960, 5.5120 changes by changing the brightness by 10 percent. The first figure shows a shift by +10% for each color and the second figure -10%.

Similar to the brightness gradients but the following saturation gradients show a change of the YIQ color 46.7740, 15.4960, 5.5120 by changing the saturation by 10% instead.

■ 46.7740, 15.4960,
5.5120

■ 46.7740, 15.4960,
5.5120

■ 255.0000, -0.0000,
-0.0000

■ 25.2900, 13.9830,
5.3990

■ 92.9700, 17.8800,
6.3600

■ 5.3820, 10.7280,
3.8160

■ 118.1550, 18.7970,
6.2610

■ 0.0000, 0.0000,
0.0000

■ 143.4540, 19.3930,
6.4730

■ 170.0520, 20.5850,
6.8970

■ 197.3510, 21.1810,
7.1090

■ 225.6500, 21.7770,

7.3210

246.4740, 7.4730,
2.2330

46.7740, 15.4960,
5.5120

46.7740, 15.4960,
5.5120

41.9810, 19.3470,
7.3070

51.0940, 11.5990,
4.5510

37.6610, 23.2440,
8.2680

55.8870, 7.7480,
2.7560

32.8680, 27.0950,
10.0630

60.2070, 3.8510,
1.7950

28.5480, 30.9920,
11.0240

65.0000, -0.0000,
-0.0000

23.7550, 34.8430,
12.8190

69.2060, -3.5760,
-1.2720

■ 19.4350, 38.7400,
13.7800

■ 74.1130, -7.7480,
-2.7560

■ 78.9060, -11.5990,
-4.5510

■ 83.2260, -15.4960,
-5.5120

■ 88.0190, -19.3470,
-7.3070

Harmonies

Analogous

The Analogous color harmony consists of three colors that are next to each other on the color wheel.



47.3160, 11.0940, 8.1980



46.7740, 15.4960, 5.5120



46.1390, 15.7260, 1.3420

Triad

The Triadic color harmony groups three colors that are evenly spaced from another and form a triangle on the color wheel.



46.7740, 15.4960, 5.5120



43.3920, -4.4000, -8.3680



44.2570, -16.7810, 1.2590

Complementary

The Complementary color scheme is a pair of colors which are on the opposite of each other on the color wheel.



46.7740, 15.4960, 5.5120



57.2260, -15.4960, -5.5120

Split Complementary

Split-complementary colors differ from the complementary color scheme. The scheme consists of three colors, the original color and two neighbors of the complement color.



41.0880, -23.7950, -3.7870



46.7740, 15.4960, 5.5120



41.7160, -14.1200, -8.4240

Square

The Square scheme is like the rectangle color scheme, but the four colors are evenly spaced on the color wheel.



46.7740, 15.4960, 5.5120



44.8230, 4.6320, -6.8560



40.1650, -22.6940, -7.2220



46.2800, -6.4200, 6.2200

Rectangle

The Rectangle color scheme consists of four colors that form a rectangle on the color wheel.



46.7740, 15.4960, 5.5120



45.4760, 13.1590, -1.6970



40.1650, -22.6940, -7.2220



42.6480, -19.4400, -0.1120

Sweetspot

The Sweet Spot groups the original color and five complimentary colors.



46.7740, 15.4960, 5.5120



76.9900, 5.9600, 2.1200



49.7380, 7.1500, 13.5980



38.7940, 3.5760, 1.2720



171.0000, -0.0000, -0.0000



43.0000, -0.0000, -0.0000

Same Dimension

The Same Dimension uses a secret algorithm to generate beautiful new colors.



46.7740, 15.4960, 5.5120



55.9600, 23.8400, 8.4800



54.4050, 11.9210, -1.2870



30.8970, 1.7880, 0.6360



29.0030, 57.8120, 20.5640



66.9760, 133.5040, 47.4880

Inverse Universe

The Inverse Universe completely reimagines the original color for something new.



46.7740, 15.4960, 5.5120



55.9600, 23.8400, 8.4800



49.5950, -11.9210, 1.2870



30.8970, 1.7880, 0.6360



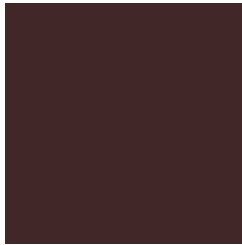
29.0030, 57.8120, 20.5640



66.9760, 133.5040, 47.4880

Previews

White Background



This preview shows how the YIQ color 46.7740, 15.4960, 5.5120 looks on a white background.

Color Contrast Check

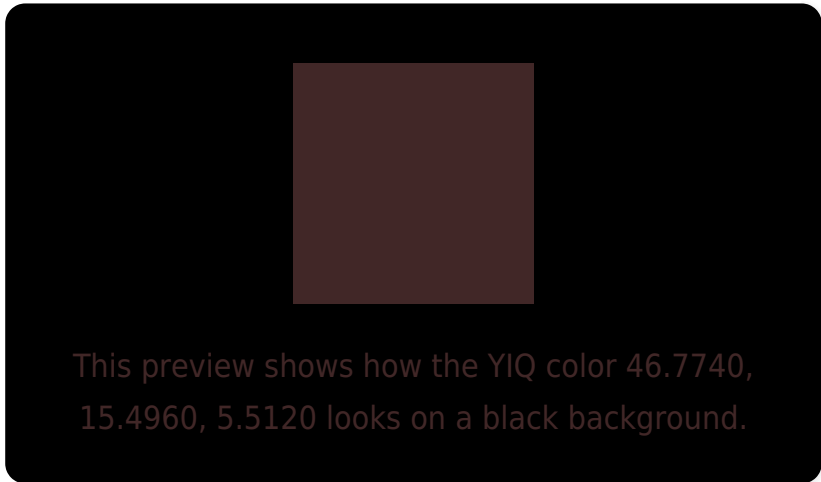
Large Text (above 18pt) WCAG AA ✓ Pass

Any Text WCAG AA ✓ Pass

Large Text (above 18pt) WCAG AAA ✓ Pass

Any Text WCAG AAA ✓ Pass

Black Background



Color Contrast Check

Large Text (above 18pt) WCAG AA × Fail

Any Text WCAG AA × Fail

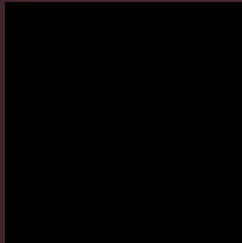
Large Text (above 18pt) WCAG AAA × Fail

Any Text WCAG AAA × Fail

If you want to check with other color combinations, try the [Color Contrast Checker](#).

YIQ 46.7740, 15.4960, 5.5120

Background



This preview shows how black text looks on a background with the YIQ color 46.7740, 15.4960, 5.5120.

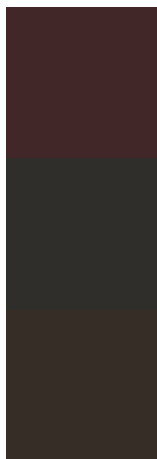


This preview shows how white text looks on a background with the YIQ color 46.7740, 15.4960,

Color Blindness Simulation

Color vision deficiency is a very complex topic, and I could not describe the different causes any better than Wikipedia does, so if you want to learn more, you should check out their [article about color blindness](#).

Dichromacy



Original Color

46.7740, 15.4960, 5.5120

Protanopia

46.2560, 2.1550, -0.5090

Deuteranopia

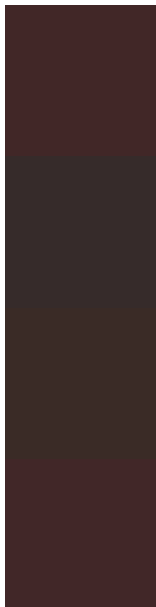
46.8930, 7.6110, -0.2690



Tritanopia

47.0020, 14.8540, 6.1340

Trichromacy



Original Color

46.7740, 15.4960, 5.5120

Protanomaly

46.1750, 6.8770, 2.0210

Deuteranomaly

46.9150, 10.5450, 1.6250

Tritanomaly

46.8880, 15.1750, 5.8230

Monochromacy



Original Color

46.7740, 15.4960, 5.5120

Achromatopsia

47.0000, 0.0000, 0.0000

Achromatomaly

46.9900, 5.9600, 2.1200

CSS Examples

Text

The CSS property to change the color of the text to YIQ 46.7740, 15.4960, 5.5120 is called "color". The color property can be set on classes, ids or directly on the HTML element.

This example shows how text in the color `rgb(65, 39, 39)` looks like.

```
.text, #text, p{  
    color:rgb(65, 39, 39)  
}
```

If you want to add a text shadow in that color use the text-shadow property, you can generate a text shadow directly with our [CSS Text Shadow Generator](#).

Here you see how black text with a 4 pixel rgb(65, 39, 39) colored shadow looks like.

```
.shadow{ text-shadow: 4px 4px 2px rgb(65, 39, 39) }
```

Border

The CSS property to change the border of an element to YIQ 46.7740, 15.4960, 5.5120 is called "border". The border property can be set on classes, ids or directly on the HTML element.

This example shows the color as border, it can be applied via the CSS property "border" or "border-color".

```
.border, #border, table{ border:4px solid rgb(65, 39, 39) }
```


If only the border color should be changed use the property `border-color`.

```
.border{ border-color:rgb(65, 39, 39) }
```

If you want to add a box shadow in that color use:

Here you see how a box with a 4 pixel `rgb(65, 39, 39)` colored shadow looks like.

```
.boxshadow{ -moz-box-shadow:4px 4px 4px  
4px rgb(65, 39, 39); -webkit-box-  
shadow:4px 4px 4px 4px rgb(65, 39, 39);  
box-shadow:4px 4px 4px 4px rgb(65, 39, 39)  
}
```

Background

The CSS property to change the background color of an element to YIQ 46.7740, 15.4960, 5.5120 is called "background". The background property can be set on classes, ids or directly on the HTML element.

```
.background, #background, body{  
background: rgb(65, 39, 39) }
```

If only the background color should be changed can be used:

```
.background{ background-color: rgb(65, 39,  
39) }
```

This example shows the color as background, it is applied via the CSS property "background".

To optimize and compress your CSS code, you can use our [online CSS compressor and optimizer](#) based on csstidy. If you want to create a linear or radial gradient as background or border, check our [CSS Gradient Generator](#).

Hey! You found this booklet interesting? Support Converting Colors with the new Membership Option!

The pro membership hides all ads, plus gives you double the colors in the color bucket, and more awesome pro features!

[Learn more, Memberships starting at \\$2.50/m!](#)

**Follow me
on Twitter!**

@ConvertingColor