

Converting Colors

YIQ(46.7960, 18.4300, 7.4060)

Have a look what the booklet for
YIQ(46.7960, 18.4300, 7.4060)
contains.

YIQ(46.7960, 18.4300, 7.4060)	3
<i>Conversions</i>	4
<i>Details</i>	6
<i>Harmonies</i>	12
<i>Previews</i>	24
<i>Color Blindness Simulation</i>	28
<i>CSS Examples</i>	31

Color

**YIQ(46.7960, 18.4300,
7.4060)**

Conversions

Conversions Part 1

Format	Color
Hex	452527
RGB	69, 37, 39
RGB Percent	27%, 15%, 15%
CMY	0.7293, 0.8549, 0.8470
CMYK	0.00, 0.46, 0.43, 0.73
HSL	356°, 30%, 21%
HSV	356°, 46%, 27%
XYZ	3.4833, 2.7348, 2.2653
YIQ	46.7960, 18.4300, 7.4060

Conversions

Conversions Part 2

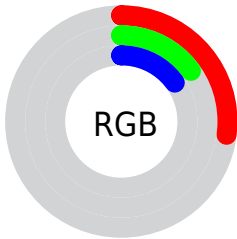
Format	Color
R_{YB}	69, 37, 39
Decimal	4531495
CIE _{Lab}	18.95, 15.44, 5.25
CIE _{LCh}	19, 16.307, 18.779
Yxy	2.7348, 0.4106, 0.3224
Android (android.graphics.Color)	4282721575 (0xFF452527)
YUV	46.7960, -3.8434, 19.4729
Hunter-Lab	16.5373, 8.6576, 3.4544

Details

The YIQ color **46.7960, 18.4300, 7.4060** is a dark color, and the websafe version is hex **663333**. A complement of this color would be **59.2040, -18.4300, -7.4060**, and the grayscale version is **47.0000, 0.0000, 0.0000**.

A 20% lighter version of the original color is **93.2910, 21.4100, 8.4660**, and **6.8770, 13.7080, 4.8760** is the 20% darker color. If you saturate the color by 10%, you get **42.0030, 22.2810, 9.2010**, and if you desaturate by 10%, it is **51.5890, 14.5790, 5.6110**.

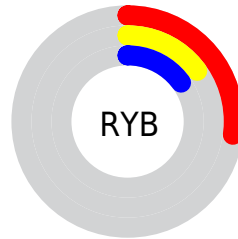
Distribution



Red (27%)

Green (15%)

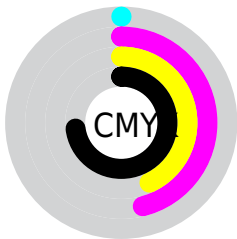
Blue (15%)



Red (27%)

Yellow (15%)

Blue (15%)

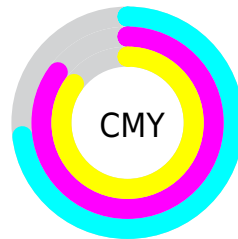


Cyan (0%)

Magenta (46%)

Yellow (43%)

Black (73%)



Cyan (73%)

Magenta (85%)

Yellow (85%)

Brightness & Saturation Gradients

These gradients show how the YIQ color 46.7960, 18.4300, 7.4060 changes by changing the brightness by 10 percent. The first figure shows a shift by +10% for each color and the second figure -10%.

Similar to the brightness gradients but the following saturation gradients show a change of the YIQ color 46.7960, 18.4300, 7.4060 by changing the saturation by 10% instead.

■ 46.7960, 18.4300,
7.4060

■ 46.7960, 18.4300,
7.4060

■ 255.0000, -0.0000,
-0.0000

■ 25.3120, 16.9170,
7.2930

■ 93.2910, 21.4100,
8.4660

■ 6.8770, 13.7080,
4.8760

■ 118.4760, 22.3270,
8.3670

■ 0.0000, 0.0000,
0.0000

■ 144.0740, 23.5190,
8.7910

■ 170.6720, 24.7110,
9.2150

■ 197.9710, 25.3070,
9.4270

■ 225.6720, 24.7110,

9.2150

245.3000, 8.0230,
3.2790

46.7960, 18.4300,
7.4060

46.7960, 18.4300,
7.4060

42.0030, 22.2810,
9.2010

51.5890, 14.5790,
5.6110

37.0960, 26.4530,
10.6850

56.4960, 10.4070,
4.1270

32.3030, 30.3040,
12.4800

61.2890, 6.5560,
2.3320

27.3960, 34.4760,
13.9640

66.1960, 2.3840,
0.8480

22.6030, 38.3270,
15.7590

70.4020, -1.1920,
-0.4240

■ 21.0870, 39.8400,
15.8720

■ 75.3090, -5.3640,
-1.9080

■ 80.1020, -9.2150,
-3.7030

■ 85.0090, -13.3870,
-5.1870

■ 89.8020, -17.2380,
-6.9820

Harmonies

Analogous

The Analogous color harmony consists of three colors that are next to each other on the color wheel.



47.2670, 12.7900, 10.5020



46.7960, 18.4300, 7.4060



46.5200, 19.0270, 2.0910

Triad

The Triadic color harmony groups three colors that are evenly spaced from another and form a triangle on the color wheel.



46.7960, 18.4300, 7.4060



42.6370, -3.7120, -9.8240



42.6090, -23.7040, 0.0720

Complementary

The Complementary color scheme is a pair of colors which are on the opposite of each other on the color wheel.



46.7960, 18.4300, 7.4060



59.2040, -18.4300, -7.4060

Split Complementary

Split-complementary colors differ from the complementary color scheme. The scheme consists of three colors, the original color and two neighbors of the complement color.



37.1190, -34.2480, -7.0800



46.7960, 18.4300, 7.4060



40.2810, -17.3290, -10.8410

Square

The Square scheme is like the rectangle color scheme, but the four colors are evenly spaced on the color wheel.



46.7960, 18.4300, 7.4060



44.5520, 6.8330, -8.1990



36.5660, -31.3130, -10.7130



46.4260, -9.7670, 6.3050

Rectangle

The Rectangle color scheme consists of four colors that form a rectangle on the color wheel.



46.7960, 18.4300, 7.4060



45.6290, 17.1020, -1.5700



36.5660, -31.3130, -10.7130



40.6900, -28.4260, -2.4580

Sweetspot

The Sweet Spot groups the original color and five complimentary colors.



46.7960, 18.4300, 7.4060



80.7020, 6.8310, 2.8550



49.6180, 7.6080, 16.3120



40.5060, 4.4470, 2.0070



173.0000, -0.0000, 0.0000



46.0000, 0.0000, -0.0000

Same Dimension

The Same Dimension uses a secret algorithm to generate beautiful new colors.



46.7960, 18.4300, 7.4060



54.2920, 28.8370, 11.5330



54.7860, 15.2220, -0.5380



33.1960, 2.3840, 0.8480



30.2850, 57.0780, 22.8540



69.4690, 130.7980, 52.4780

Inverse Universe

The Inverse Universe completely reimagines the original color for something new.



46.7960, 18.4300, 7.4060



54.2920, 28.8370, 11.5330



51.2140, -15.2220, 0.5380



33.1960, 2.3840, 0.8480



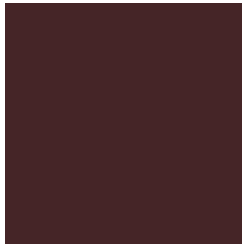
30.2850, 57.0780, 22.8540



69.4690, 130.7980, 52.4780

Previews

White Background



This preview shows how the YIQ color 46.7960, 18.4300, 7.4060 looks on a white background.

Color Contrast Check

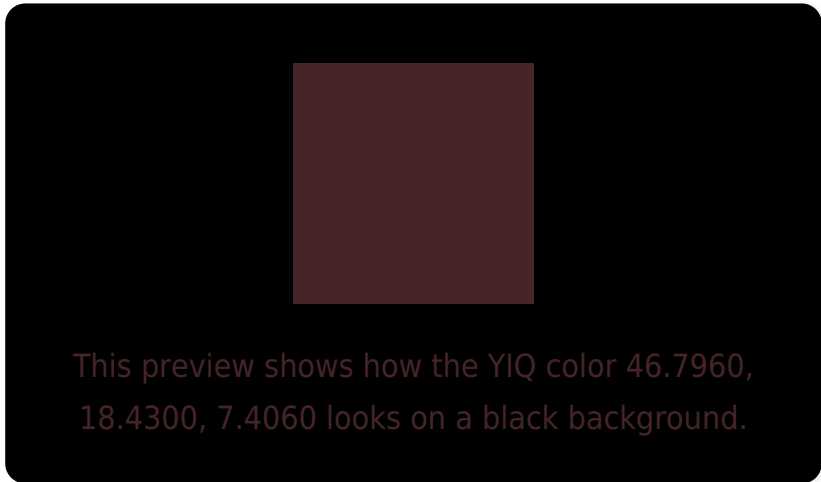
Large Text (above 18pt) WCAG AA ✓ Pass

Any Text WCAG AA ✓ Pass

Large Text (above 18pt) WCAG AAA ✓ Pass

Any Text WCAG AAA ✓ Pass

Black Background



Color Contrast Check

Large Text (above 18pt) WCAG AA × Fail

Any Text WCAG AA × Fail

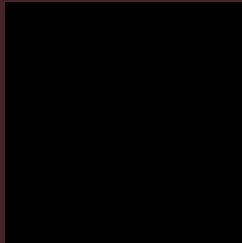
Large Text (above 18pt) WCAG AAA × Fail

Any Text WCAG AAA × Fail

If you want to check with other color combinations, try the [Color Contrast Checker](#).

YIQ 46.7960, 18.4300, 7.4060

Background



This preview shows how black text looks on a background with the YIQ color 46.7960, 18.4300, 7.4060.

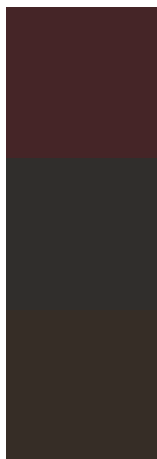


This preview shows how white text looks on a background with the YIQ color 46.7960, 18.4300,

Color Blindness Simulation

Color vision deficiency is a very complex topic, and I could not describe the different causes any better than Wikipedia does, so if you want to learn more, you should check out their [article about color blindness](#).

Dichromacy



Original Color

46.7960, 18.4300, 7.4060

Protanopia

46.3700, 1.8340, -0.1980

Deuteranopia

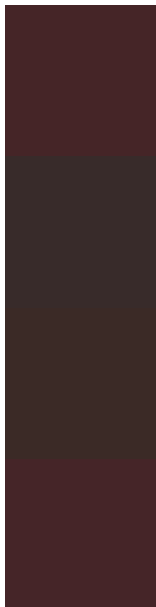
46.8930, 7.6110, -0.2690



Tritanopia

46.9100, 18.1090, 7.7170

Trichromacy



Original Color

46.7960, 18.4300, 7.4060

Protanomaly

46.7730, 8.0690, 2.4450

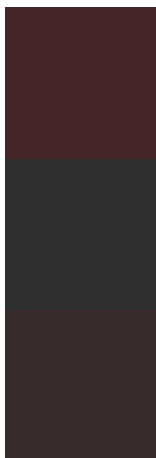
Deuteranomaly

46.6270, 11.4160, 2.3600

Tritanomaly

46.9100, 18.1090, 7.7170

Monochromacy



Original Color

46.7960, 18.4300, 7.4060

Achromatopsia

47.0000, 0.0000, 0.0000

Achromatomaly

46.7020, 6.8310, 2.8550

CSS Examples

Text

The CSS property to change the color of the text to YIQ 46.7960, 18.4300, 7.4060 is called "color". The color property can be set on classes, ids or directly on the HTML element.

This example shows how text in the color `rgb(69, 37, 39)` looks like.

```
.text, #text, p{  
    color:rgb(69, 37, 39)  
}
```

If you want to add a text shadow in that color use the text-shadow property, you can generate a text shadow directly with our [CSS Text Shadow Generator](#).

Here you see how black text with a 4 pixel rgb(69, 37, 39) colored shadow looks like.

```
.shadow{ text-shadow: 4px 4px 2px rgb(69, 37, 39) }
```

Border

The CSS property to change the border of an element to YIQ 46.7960, 18.4300, 7.4060 is called "border". The border property can be set on classes, ids or directly on the HTML element.

This example shows the color as border, it can be applied via the CSS property "border" or "border-color".

```
.border, #border, table{ border:4px solid rgb(69, 37, 39) }
```


If only the border color should be changed use the property border-color.

```
.border{ border-color:rgb(69, 37, 39) }
```

If you want to add a box shadow in that color use:

Here you see how a box with a 4 pixel rgb(69, 37, 39) colored shadow looks like.

```
.boxshadow{ -moz-box-shadow:4px 4px 4px  
4px rgb(69, 37, 39); -webkit-box-  
shadow:4px 4px 4px 4px rgb(69, 37, 39);  
box-shadow:4px 4px 4px 4px rgb(69, 37, 39)  
}
```

Background

The CSS property to change the background color of an element to YIQ 46.7960, 18.4300, 7.4060 is called "background". The background property can be set on classes, ids or directly on the HTML element.

```
.background, #background, body{  
background: rgb(69, 37, 39) }
```

If only the background color should be changed can be used:

```
.background{ background-color: rgb(69, 37,  
39) }
```

This example shows the color as background, it is applied via the CSS property "background".

To optimize and compress your CSS code, you can use our [online CSS compressor and optimizer](#) based on csstidy. If you want to create a linear or radial gradient as background or border, check our [CSS Gradient Generator](#).

Hey! You found this booklet interesting? Support Converting Colors with the new Membership Option!

The pro membership hides all ads, plus gives you double the colors in the color bucket, and more awesome pro features!

[Learn more, Memberships starting at \\$2.50/m!](#)

**Follow me
on Twitter!**

@ConvertingColor