

Converting Colors

YIQ(46.8200, 27.0500, 5.3700)

Have a look what the booklet for
YIQ(46.8200, 27.0500, 5.3700)
contains.

YIQ(46.8200, 27.0500, 5.3700)	3
<i>Conversions</i>	4
<i>Details</i>	6
<i>Harmonies</i>	12
<i>Previews</i>	24
<i>Color Blindness Simulation</i>	28
<i>CSS Examples</i>	31

Color

**YIQ(46.8200, 27.0500,
5.3700)**

Conversions

Conversions Part 1

Format	Color
Hex	4C241A
RGB	76, 36, 26
RGB Percent	30%, 14%, 10%
CMY	0.7019, 0.8589, 0.8979
CMYK	0.00, 0.53, 0.66, 0.70
HSL	12°, 49%, 20%
HSV	12°, 66%, 30%
XYZ	3.7994, 2.8729, 1.3333
YIQ	46.8200, 27.0500, 5.3700

Conversions

Conversions Part 2

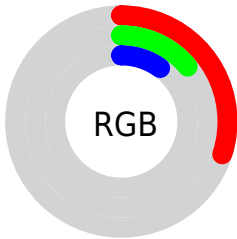
Format	Color
RYB	76, 39, 26
Decimal	4989978
CIELab	19.53, 17.83, 15.16
CIELCh	20, 23.398, 40.373
Yxy	2.8729, 0.4746, 0.3589
Android (android.graphics.Color)	4283180058 (0xFF4C241A)
YUV	46.8200, -10.2643, 25.5909
Hunter-Lab	16.9496, 10.3511, 7.2009

Details

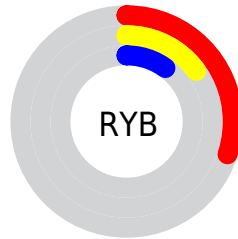
The YIQ color **46.8200, 27.0500, 5.3700** is a dark color, and the websafe version is hex **663333**. A complement of this color would be **55.1800, -27.0500, -5.3700**, and the grayscale version is **47.0000, 0.0000, 0.0000**.

A 20% lighter version of the original color is **94.2720, 31.5890, 5.7090**, and **8.7850, 16.9630, 6.4590** is the 20% darker color. If you saturate the color by 10%, you get **42.3860, 31.2680, 6.0200**, and if you desaturate by 10%, it is **51.2540, 22.8320, 4.7200**.

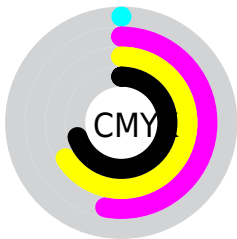
Distribution



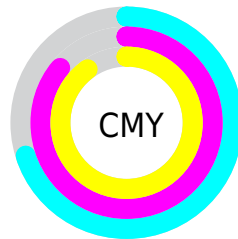
- Red (30%)
- Green (14%)
- Blue (10%)



- Red (30%)
- Yellow (15%)
- Blue (10%)



- Cyan (0%)
- Magenta (53%)
- Yellow (66%)
- Black (70%)



- Cyan (70%)
- Magenta (86%)
- Yellow (90%)

Brightness & Saturation Gradients

These gradients show how the YIQ color 46.8200, 27.0500, 5.3700 changes by changing the brightness by 10 percent. The first figure shows a shift by +10% for each color and the second figure -10%.

Similar to the brightness gradients but the following saturation gradients show a change of the YIQ color 46.8200, 27.0500, 5.3700 by changing the saturation by 10% instead.

■ 46.8200, 27.0500,
5.3700

■ 46.8200, 27.0500,
5.3700

■ 254.8860, 0.3210,
-0.3110

■ 24.3530, 26.8670,
3.1790

■ 94.2720, 31.5890,
5.7090

■ 8.7850, 16.9630,
6.4590

■ 119.1690, 33.3770,
6.3450

■ 0.0000, 0.0000,
0.0000

■ 144.7670, 34.5690,
6.7690

■ 172.1370, 36.4030,
6.5710

■ 199.7350, 37.5950,
6.9950

■ 223.1470, 30.4430,

4.4510

■ 243.3620, 13.4800,
-2.0080

■ 46.8200, 27.0500,
5.3700

■ 46.8200, 27.0500,
5.3700

■ 42.3860, 31.2680,
6.0200

■ 51.2540, 22.8320,
4.7200

■ 38.0660, 35.1650,
6.9810

■ 55.5740, 18.9350,
3.7590

■ 33.6320, 39.3830,
7.6310

■ 60.0080, 14.7170,
3.1090

■ 31.5290, 41.1710,
8.2670

■ 64.3280, 10.8200,
2.1480

■ 68.7620, 6.6020,
1.4980

■ 73.7830, 2.1090,
0.3250

■ 78.1030, -1.7880,
-0.6360

■ 82.5370, -6.0060,
-1.2860

■ 86.8570, -9.9030,
-2.2470

Harmonies

Analogous

The Analogous color harmony consists of three colors that are next to each other on the color wheel.



47.1930, 24.8020, 13.0740



46.8200, 27.0500, 5.3700



45.9840, 23.2920, -3.6200

Triad

The Triadic color harmony groups three colors that are evenly spaced from another and form a triangle on the color wheel.



46.8200, 27.0500, 5.3700



37.1720, -24.5720, -17.2440



44.8960, -22.8340, 6.3340

Complementary

The Complementary color scheme is a pair of colors which are on the opposite of each other on the color wheel.



46.8200, 27.0500, 5.3700



55.1800, -27.0500, -5.3700

Split Complementary

Split-complementary colors differ from the complementary color scheme. The scheme consists of three colors, the original color and two neighbors of the complement color.



39.5300, -39.6590, -2.6270



46.8200, 27.0500, 5.3700



38.9140, -32.4130, -12.8050

Square

The Square scheme is like the rectangle color scheme, but the four colors are evenly spaced on the color wheel.



46.8200, 27.0500, 5.3700



43.2580, -1.3270, -14.5030



40.1510, -37.2740, -7.3060



48.5460, -1.0570, 13.6550

Rectangle

The Rectangle color scheme consists of four colors that form a rectangle on the color wheel.



46.8200, 27.0500, 5.3700



45.2990, 17.7910, -8.5530



40.1510, -37.2740, -7.3060



41.2860, -32.9200, 1.8960

Sweetspot

The Sweet Spot groups the original color and five complimentary colors.



46.8200, 27.0500, 5.3700



88.0290, 10.2240, 1.9360



45.6240, 16.6390, 23.3510



43.7620, 6.6020, 1.4980



179.0000, -0.0000, -0.0000



51.0000, -0.0000, -0.0000

Same Dimension

The Same Dimension uses a secret algorithm to generate beautiful new colors.



46.8200, 27.0500, 5.3700



53.7140, 42.0880, 8.1680



60.9080, 20.4500, -7.1820



35.7830, 2.1090, 0.3250



42.2380, 55.2920, 11.1640



95.7720, 124.4300, 24.7020

Inverse Universe

The Inverse Universe completely reimagines the original color for something new.



55.1800, -27.0500, -5.3700



66.8730, -42.3630, -8.6910



41.0920, -20.4500, 7.1820



36.2170, -2.1090, -0.3250



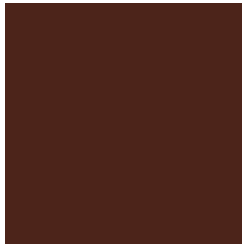
59.7620, -55.2920, -11.1640



134.2280, -124.4300, -24.7020

Previews

White Background



This preview shows how the YIQ color 46.8200, 27.0500, 5.3700 looks on a white background.

Color Contrast Check

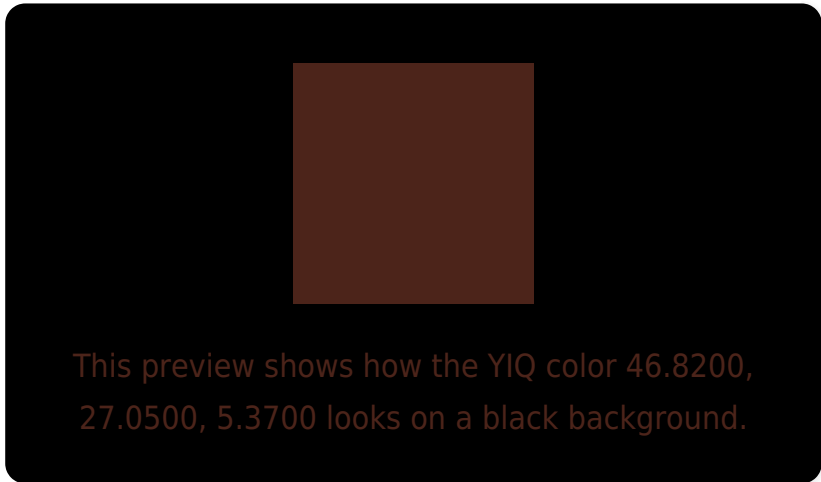
Large Text (above 18pt) WCAG AA ✓ Pass

Any Text WCAG AA ✓ Pass

Large Text (above 18pt) WCAG AAA ✓ Pass

Any Text WCAG AAA ✓ Pass

Black Background



Color Contrast Check

Large Text (above 18pt) WCAG AA × Fail

Any Text WCAG AA × Fail

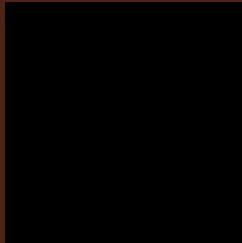
Large Text (above 18pt) WCAG AAA × Fail

Any Text WCAG AAA × Fail

If you want to check with other color combinations, try the [Color Contrast Checker](#).

YIQ 46.8200, 27.0500, 5.3700

Background



This preview shows how black text looks on a background with the YIQ color 46.8200, 27.0500, 5.3700.

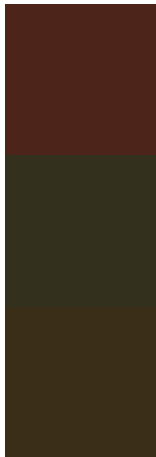


This preview shows how white text looks on a background with the YIQ color 46.8200, 27.0500,

Color Blindness Simulation

Color vision deficiency is a very complex topic, and I could not describe the different causes any better than Wikipedia does, so if you want to learn more, you should check out their [article about color blindness](#).

Dichromacy



Original Color

46.8200, 27.0500, 5.3700

Protanopia

47.1440, 8.1620, -4.7500

Deuteranopia

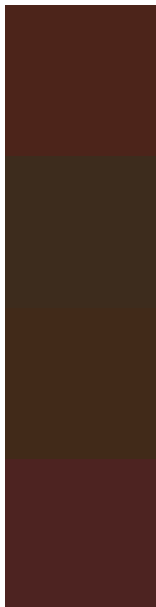
47.3790, 14.8100, -4.0860



Tritanopia

47.7860, 24.3900, 9.5260

Trichromacy



Original Color

46.8200, 27.0500, 5.3700

Protanomaly

47.3730, 14.9470, -1.0610

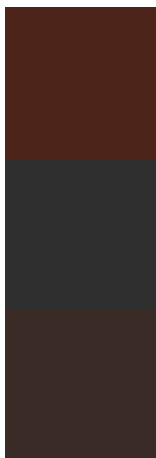
Deuteranomaly

46.9390, 19.1650, -0.4110

Tritanomaly

47.3300, 25.6740, 8.2820

Monochromacy



Original Color

46.8200, 27.0500, 5.3700

Achromatopsia

47.0000, 0.0000, 0.0000

Achromatomaly

47.0290, 10.2240, 1.9360

CSS Examples

Text

The CSS property to change the color of the text to YIQ 46.8200, 27.0500, 5.3700 is called "color". The color property can be set on classes, ids or directly on the HTML element.

This example shows how text in the color `rgb(76, 36, 26)` looks like.

```
.text, #text, p{  
    color:rgb(76, 36, 26)  
}
```

If you want to add a text shadow in that color use the text-shadow property, you can generate a text shadow directly with our [CSS Text Shadow Generator](#).

Here you see how black text with a 4 pixel rgb(76, 36, 26) colored shadow looks like.

```
.shadow{ text-shadow: 4px 4px 2px rgb(76, 36, 26) }
```

Border

The CSS property to change the border of an element to YIQ 46.8200, 27.0500, 5.3700 is called "border". The border property can be set on classes, ids or directly on the HTML element.

This example shows the color as border, it can be applied via the CSS property "border" or "border-color".

```
.border, #border, table{ border:4px solid rgb(76, 36, 26) }
```


If only the border color should be changed use the property `border-color`.

```
.border{ border-color:rgb(76, 36, 26) }
```

If you want to add a box shadow in that color use:

Here you see how a box with a 4 pixel `rgb(76, 36, 26)` colored shadow looks like.

```
.boxshadow{ -moz-box-shadow:4px 4px 4px  
4px rgb(76, 36, 26); -webkit-box-  
shadow:4px 4px 4px 4px rgb(76, 36, 26);  
box-shadow:4px 4px 4px 4px rgb(76, 36, 26)  
}
```

Background

The CSS property to change the background color of an element to YIQ 46.8200, 27.0500, 5.3700 is called "background". The background property can be set on classes, ids or directly on the HTML element.

```
.background, #background, body{  
background: rgb(76, 36, 26) }
```

If only the background color should be changed can be used:

```
.background{ background-color: rgb(76, 36,  
26) }
```

This example shows the color as background, it is applied via the CSS property "background".

To optimize and compress your CSS code, you can use our [online CSS compressor and optimizer](#) based on csstidy. If you want to create a linear or radial gradient as background or border, check our [CSS Gradient Generator](#).

Hey! You found this booklet interesting? Support Converting Colors with the new Membership Option!

The pro membership hides all ads, plus gives you double the colors in the color bucket, and more awesome pro features!

[Learn more, Memberships starting at \\$2.50/m!](#)

**Follow me
on Twitter!**

@ConvertingColor