

Converting Colors

YIQ(47.1520, 32.0470, 8.4230)

Have a look what the booklet for
YIQ(47.1520, 32.0470, 8.4230)
contains.

YIQ(47.1520, 32.0470, 8.4230)	3
<i>Conversions</i>	4
<i>Details</i>	6
<i>Harmonies</i>	12
<i>Previews</i>	24
<i>Color Blindness Simulation</i>	28
<i>CSS Examples</i>	31

Color

**YIQ(47.1520, 32.0470,
8.4230)**

Conversions

Conversions Part 1

Format	Color
Hex	53211A
RGB	83, 33, 26
RGB Percent	33%, 13%, 10%
CMY	0.6744, 0.8707, 0.8979
CMYK	0.00, 0.60, 0.69, 0.67
HSL	7°, 52%, 21%
HSV	7°, 69%, 33%
XYZ	4.3000, 3.0016, 1.3320
YIQ	47.1520, 32.0470, 8.4230

Conversions

Conversions Part 2

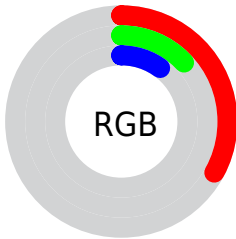
Format	Color
RYB	83, 34, 26
Decimal	5447962
CIELab	20.05, 22.77, 16.07
CIELCh	20, 27.872, 35.215
Yxy	3.0016, 0.4981, 0.3477
Android (android.graphics.Color)	4283638042 (0xFF53211A)
YUV	47.1520, -10.4279, 31.4387
Hunter-Lab	17.3251, 13.9833, 7.5692

Details

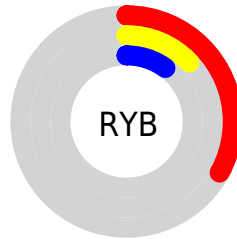
The YIQ color **47.1520, 32.0470, 8.4230** is a dark color, and the websafe version is hex **663333**. A complement of this color would be **61.8480, -32.0470, -8.4230**, and the grayscale version is **47.0000, 0.0000, 0.0000**.

A 20% lighter version of the original color is **94.9030, 37.1820, 8.9740**, and **11.1770, 21.7310, 8.1550** is the 20% darker color. If you saturate the color by 10%, you get **42.1310, 36.5400, 9.5960**, and if you desaturate by 10%, it is **52.1730, 27.5540, 7.2500**.

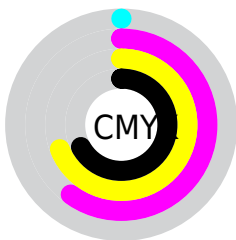
Distribution



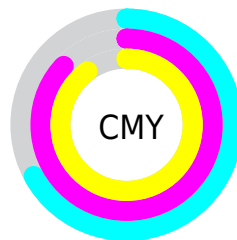
- Red (33%)
- Green (13%)
- Blue (10%)



- Red (33%)
- Yellow (13%)
- Blue (10%)



- Cyan (0%)
- Magenta (60%)
- Yellow (69%)
- Black (67%)



- Cyan (67%)
- Magenta (87%)
- Yellow (90%)

Brightness & Saturation Gradients

These gradients show how the YIQ color 47.1520, 32.0470, 8.4230 changes by changing the brightness by 10 percent. The first figure shows a shift by +10% for each color and the second figure -10%.

Similar to the brightness gradients but the following saturation gradients show a change of the YIQ color 47.1520, 32.0470, 8.4230 by changing the saturation by 10% instead.

47.1520, 32.0470,
8.4230

47.1520, 32.0470,
8.4230

254.8860, 0.3210,
-0.3110

23.2120, 31.8180,
7.0660

94.9030, 37.1820,
8.9740

11.1770, 21.7310,
8.1550

120.6860, 39.2910,
9.2990

0.0000, 0.0000,
0.0000

146.5830, 41.0790,
9.9350

173.0670, 42.5920,
10.0480

200.9640, 44.3800,
10.6840

221.9730, 30.9930,

5.4970

■ 242.1880, 14.0300,
-0.9620

■ 47.1520, 32.0470,
8.4230

■ 47.1520, 32.0470,
8.4230

■ 42.1310, 36.5400,
9.5960

■ 52.1730, 27.5540,
7.2500

■ 36.4090, 41.6290,
10.9810

■ 57.8950, 22.4650,
5.8650

■ 31.3880, 46.1220,
12.1540

■ 62.9160, 17.9720,
4.6920

■ 30.6870, 46.7180,
12.3660

■ 67.9370, 13.4790,
3.5190

■ 73.0720, 8.6650,
2.6570

■ 78.6800, 3.8970,
0.9610

■ 83.7010, -0.5960,
-0.2120

■ 88.7220, -5.0890,
-1.3850

■ 94.4440, -10.1780,
-2.7700

Harmonies

Analogous

The Analogous color harmony consists of three colors that are next to each other on the color wheel.



47.6820, 27.9190, 17.1590



47.1520, 32.0470, 8.4230



46.6210, 28.7480, -3.3800

Triad

The Triadic color harmony groups three colors that are evenly spaced from another and form a triangle on the color wheel.



47.1520, 32.0470, 8.4230



36.8790, -25.3050, -20.4810



40.9910, -39.3390, 2.5890

Complementary

The Complementary color scheme is a pair of colors which are on the opposite of each other on the color wheel.



47.1520, 32.0470, 8.4230



61.8480, -32.0470, -8.4230

Split Complementary

Split-complementary colors differ from the complementary color scheme. The scheme consists of three colors, the original color and two neighbors of the complement color.



41.9750, -42.4100, -2.3300



47.1520, 32.0470, 8.4230



39.8600, -32.3210, -14.4730

Square

The Square scheme is like the rectangle color scheme, but the four colors are evenly spaced on the color wheel.



47.1520, 32.0470, 8.4230



43.2320, 1.5620, -17.3020



42.1400, -38.7410, -8.2530



49.5610, -5.4130, 15.5070

Rectangle

The Rectangle color scheme consists of four colors that form a rectangle on the color wheel.



47.1520, 32.0470, 8.4230



45.7680, 23.6600, -10.2920



42.1400, -38.7410, -8.2530



40.6700, -42.8690, 0.4830

Sweetspot

The Sweet Spot groups the original color and five complimentary colors.



47.1520, 32.0470, 8.4230



92.7520, 12.5620, 3.6180



48.7430, 17.9220, 27.6340



45.3600, 7.7940, 1.9220



181.0000, -0.0000, 0.0000



54.0000, -0.0000, 0.0000

Same Dimension

The Same Dimension uses a secret algorithm to generate beautiful new colors.



47.1520, 32.0470, 8.4230



51.7690, 49.4230, 12.9030



63.5880, 24.3470, -6.2210



38.1960, 2.3840, 0.8480



39.0260, 59.0050, 15.4610



85.8040, 130.5720, 34.5400

Inverse Universe

The Inverse Universe completely reimagines the original color for something new.



61.8480, -32.0470, -8.4230



74.2310, -49.4230, -12.9030



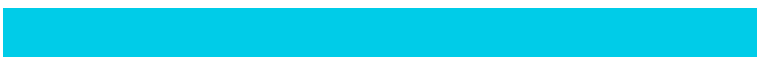
45.4120, -24.3470, 6.2210



39.2170, -2.1090, -0.3250



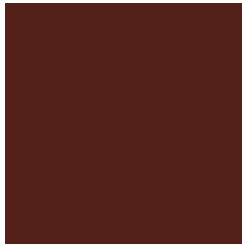
65.9740, -59.0050, -15.4610



146.1960, -130.5720, -34.5400

Previews

White Background



This preview shows how the YIQ color 47.1520, 32.0470, 8.4230 looks on a white background.

Color Contrast Check

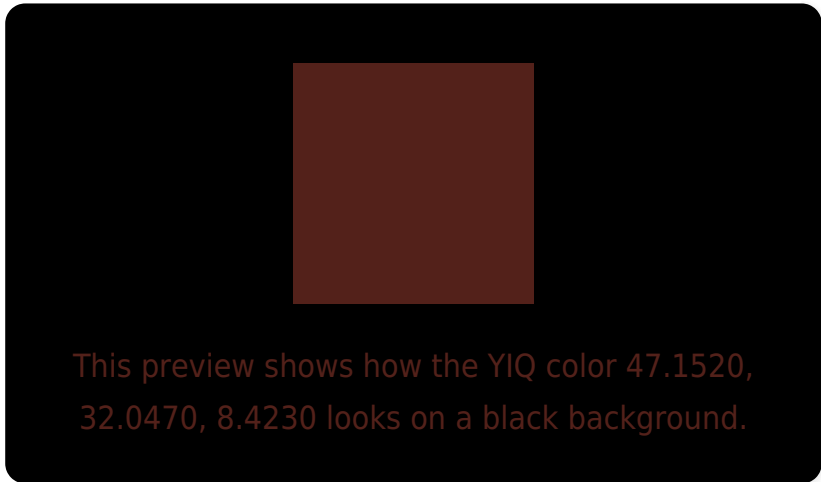
Large Text (above 18pt) WCAG AA ✓ Pass

Any Text WCAG AA ✓ Pass

Large Text (above 18pt) WCAG AAA ✓ Pass

Any Text WCAG AAA ✓ Pass

Black Background



Color Contrast Check

Large Text (above 18pt) WCAG AA × Fail

Any Text WCAG AA × Fail

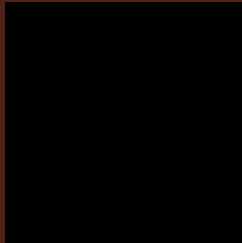
Large Text (above 18pt) WCAG AAA × Fail

Any Text WCAG AAA × Fail

If you want to check with other color combinations, try the [Color Contrast Checker](#).

YIQ 47.1520, 32.0470, 8.4230

Background



This preview shows how black text looks on a background with the YIQ color 47.1520, 32.0470, 8.4230.

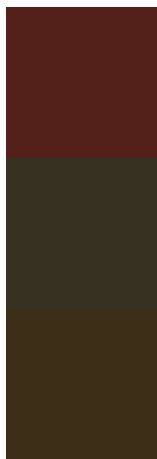


This preview shows how white text looks on a background with the YIQ color 47.1520, 32.0470,

Color Blindness Simulation

Color vision deficiency is a very complex topic, and I could not describe the different causes any better than Wikipedia does, so if you want to learn more, you should check out their [article about color blindness](#).

Dichromacy



Original Color

47.1520, 32.0470, 8.4230

Protanopia

48.5570, 8.4370, -4.2270

Deuteranopia

48.4500, 16.0480, -4.4960



Tritanopia

47.4770, 29.7540, 11.4340

Trichromacy



Original Color

47.1520, 32.0470, 8.4230

Protanomaly

48.0960, 17.2850, 0.6210

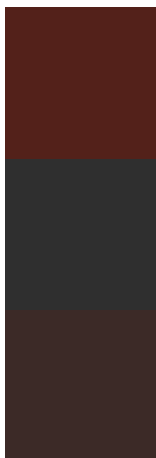
Deuteranomaly

48.0210, 21.8700, 0.1260

Tritanomaly

47.1350, 30.7170, 10.5010

Monochromacy



Original Color

47.1520, 32.0470, 8.4230

Achromatopsia

47.0000, 0.0000, 0.0000

Achromatomaly

47.0400, 11.6910, 2.8830

CSS Examples

Text

The CSS property to change the color of the text to YIQ 47.1520, 32.0470, 8.4230 is called "color". The color property can be set on classes, ids or directly on the HTML element.

This example shows how text in the color `rgb(83, 33, 26)` looks like.

```
.text, #text, p{  
    color:rgb(83, 33, 26)  
}
```

If you want to add a text shadow in that color use the text-shadow property, you can generate a text shadow directly with our [CSS Text Shadow Generator](#).

Here you see how black text with a 4 pixel rgb(83, 33, 26) colored shadow looks like.

```
.shadow{ text-shadow: 4px 4px 2px rgb(83, 33, 26) }
```

Border

The CSS property to change the border of an element to YIQ 47.1520, 32.0470, 8.4230 is called "border". The border property can be set on classes, ids or directly on the HTML element.

This example shows the color as border, it can be applied via the CSS property "border" or "border-color".

```
.border, #border, table{ border:4px solid rgb(83, 33, 26) }
```


If only the border color should be changed use the property `border-color`.

```
.border{ border-color:rgb(83, 33, 26) }
```

If you want to add a box shadow in that color use:

Here you see how a box with a 4 pixel `rgb(83, 33, 26)` colored shadow looks like.

```
.boxshadow{ -moz-box-shadow:4px 4px 4px  
4px rgb(83, 33, 26); -webkit-box-  
shadow:4px 4px 4px 4px rgb(83, 33, 26);  
box-shadow:4px 4px 4px 4px rgb(83, 33, 26)  
}
```

Background

The CSS property to change the background color of an element to YIQ 47.1520, 32.0470, 8.4230 is called "background". The background property can be set on classes, ids or directly on the HTML element.

```
.background, #background, body{  
background: rgb(83, 33, 26) }
```

If only the background color should be changed can be used:

```
.background{ background-color: rgb(83, 33,  
26) }
```

This example shows the color as background, it is applied via the CSS property "background".

To optimize and compress your CSS code, you can use our [online CSS compressor and optimizer](#) based on csstidy. If you want to create a linear or radial gradient as background or border, check our [CSS Gradient Generator](#).

Hey! You found this booklet interesting? Support Converting Colors with the new Membership Option!

The pro membership hides all ads, plus gives you double the colors in the color bucket, and more awesome pro features!

[Learn more, Memberships starting at \\$2.50/m!](#)

**Follow me
on Twitter!**

@ConvertingColor