

# Converting Colors

YIQ(47.4870, 23.7940, 9.3140)

Have a look what the booklet for  
YIQ(47.4870, 23.7940, 9.3140)  
contains.

<b>YIQ(47.4870, 23.7940, 9.3140)</b> .....	3
<b><i>Conversions</i></b> .....	4
<b><i>Details</i></b> .....	6
<b><i>Harmonies</i></b> .....	12
<b><i>Previews</i></b> .....	24
<b><i>Color Blindness Simulation</i></b> .....	28
<b><i>CSS Examples</i></b> .....	31

# Color

**YIQ(47.4870, 23.7940,  
9.3140)**

# Conversions

## Conversions Part 1

Format	Color
Hex	4C2325
RGB	76, 35, 37
RGB Percent	30%, 14%, 15%
CMY	0.7019, 0.8628, 0.8548
CMYK	0.00, 0.54, 0.51, 0.70
HSL	357°, 37%, 22%
HSV	357°, 54%, 30%
XYZ	3.9173, 2.8723, 2.1002
YIQ	47.4870, 23.7940, 9.3140

# Conversions

## Conversions Part 2

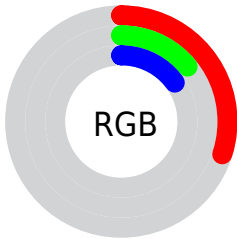
<b>Format</b>	<b>Color</b>
<b>RYB</b>	76, 35, 37
Decimal	4989733
CIELab	19.53, 19.59, 7.61
CIELCh	20, 21.014, 21.242
Yxy	2.8723, 0.4407, 0.3231
Android (android.graphics.Color)	4283179813 (0xFF4C2325)
YUV	47.4870, -5.1701, 25.0059
Hunter-Lab	16.9479, 11.5996, 4.5164

# Details

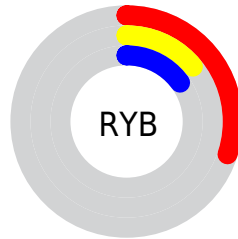
The YIQ color **47.4870, 23.7940, 9.3140** is a dark color, and the websafe version is hex **663333**. A complement of this color would be **63.5130, -23.7940, -9.3140**, and the grayscale version is **48.0000, -0.0000, 0.0000**.

A 20% lighter version of the original color is **94.8680, 27.0950, 10.0630**, and **9.3830, 18.1550, 6.8830** is the 20% darker color. If you saturate the color by 10%, you get **41.9930, 28.2410, 11.3210**, and if you desaturate by 10%, it is **52.9810, 19.3470, 7.3070**.

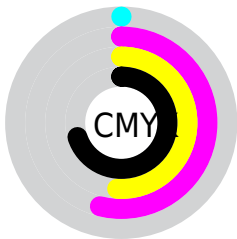
# Distribution



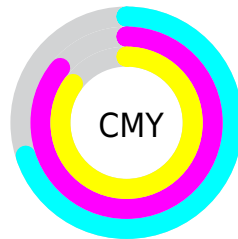
- Red (30%)
- Green (14%)
- Blue (15%)



- Red (30%)
- Yellow (14%)
- Blue (15%)



- Cyan (0%)
- Magenta (54%)
- Yellow (51%)
- Black (70%)



- Cyan (70%)
- Magenta (86%)
- Yellow (85%)

# Brightness & Saturation Gradients

These gradients show how the YIQ color 47.4870, 23.7940, 9.3140 changes by changing the brightness by 10 percent. The first figure shows a shift by +10% for each color and the second figure -10%.

Similar to the brightness gradients but the following saturation gradients show a change of the YIQ color 47.4870, 23.7940, 9.3140 by changing the saturation by 10% instead.



47.4870, 23.7940,  
9.3140

47.4870, 23.7940,  
9.3140

255.0000, -0.0000,  
-0.0000

25.0030, 22.2810,  
9.2010

94.8680, 27.0950,  
10.0630

9.3830, 18.1550,  
6.8830

119.7650, 28.8830,  
10.6990

0.0000, 0.0000,  
0.0000

145.9500, 29.8000,  
10.6000

172.5480, 30.9920,  
11.0240

200.1460, 32.1840,  
11.4480

224.7430, 25.9490,

8.8050

244.4850, 8.9400,  
3.1800

47.4870, 23.7940,  
9.3140

47.4870, 23.7940,  
9.3140

41.9930, 28.2410,  
11.3210

52.9810, 19.3470,  
7.3070

37.0860, 32.4130,  
12.8050

57.8880, 15.1750,  
5.8230

31.4780, 37.1810,  
14.5010

63.4960, 10.4070,  
4.1270

26.5710, 41.3530,  
15.9850

68.4030, 6.2350,  
2.6430

23.1800, 44.0120,  
17.3560

73.8970, 1.7880,  
0.6360

■ 79.3910, -2.6590,  
-1.3710

■ 84.4120, -7.1520,  
-2.5440

■ 89.9060, -11.5990,  
-4.5510

■ 94.8130, -15.7710,  
-6.0350

# Harmonies

## Analogous

The Analogous color harmony consists of three colors that are next to each other on the color wheel.



48.3000, 17.1910, 13.3430



47.4870, 23.7940, 9.3140



46.8580, 23.8870, 2.1190

# Triad

The Triadic color harmony groups three colors that are evenly spaced from another and form a triangle on the color wheel.



47.4870, 23.7940, 9.3140



42.5610, -6.5540, -13.3860



39.6230, -35.4870, -1.1430

# Complementary

The Complementary color scheme is a pair of colors which are on the opposite of each other on the color wheel.



47.4870, 23.7940, 9.3140



63.5130, -23.7940, -9.3140

# Split Complementary

Split-complementary colors differ from the complementary color scheme. The scheme consists of three colors, the original color and two neighbors of the complement color.



39.7920, -37.6410, -6.1610



47.4870, 23.7940, 9.3140



37.0730, -28.6070, -15.7030

# Square

The Square scheme is like the rectangle color scheme, but the four colors are evenly spaced on the color wheel.



47.4870, 23.7940, 9.3140



45.1560, 7.8880, -10.8000



38.8970, -33.7430, -10.7270



47.3380, -12.3350, 8.7930



# Rectangle

The Rectangle color scheme consists of four colors that form a rectangle on the color wheel.



47.4870, 23.7940, 9.3140



46.4290, 20.5410, -3.3230



38.8970, -33.7430, -10.7270



39.1880, -38.6960, -3.5600

# Sweetspot

The Sweet Spot groups the original color and five complimentary colors.



47.4870, 23.7940, 9.3140



88.4850, 8.9400, 3.1800



51.3350, 10.0830, 21.0190



44.1040, 5.6390, 2.4310



179.0000, -0.0000, -0.0000



51.0000, -0.0000, -0.0000



# Same Dimension

The Same Dimension uses a secret algorithm to generate beautiful new colors.



47.4870, 23.7940, 9.3140



54.4780, 37.1810, 14.5010



57.8250, 19.4860, -0.7220



35.3100, 2.0630, 1.1590



31.0680, 59.1870, 23.1790



70.0240, 133.5490, 52.1810



# Inverse Universe

The Inverse Universe completely reimagines the original color for something new.



47.4870, 23.7940, 9.3140



54.4780, 37.1810, 14.5010



53.1750, -19.4860, 0.7220



35.3100, 2.0630, 1.1590



31.0680, 59.1870, 23.1790

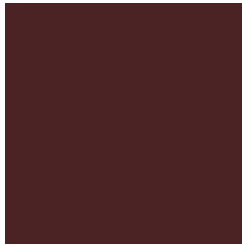


70.0240, 133.5490, 52.1810



# Previews

## White Background



This preview shows how the YIQ color 47.4870, 23.7940, 9.3140 looks on a white background.

## Color Contrast Check

Large Text (above 18pt) WCAG AA ✓ Pass

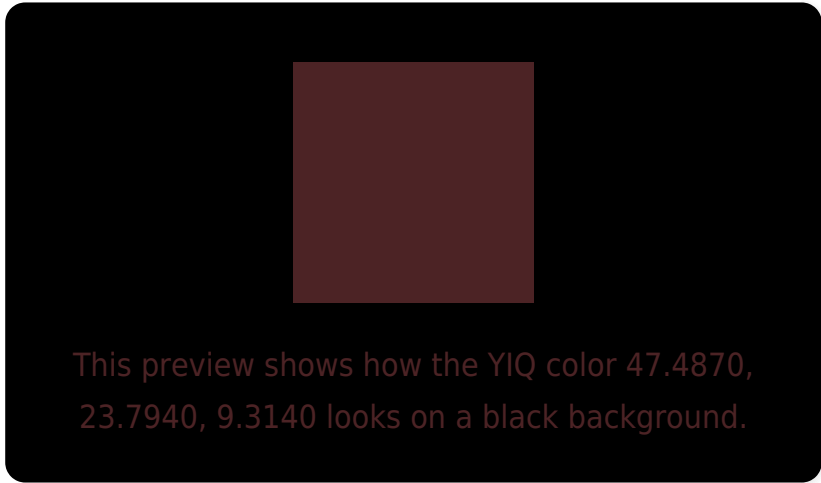
Any Text WCAG AA ✓ Pass

Large Text (above 18pt) WCAG AAA ✓ Pass

Any Text WCAG AAA ✓ Pass



# Black Background



## Color Contrast Check

Large Text (above 18pt) WCAG AA × Fail

Any Text WCAG AA × Fail

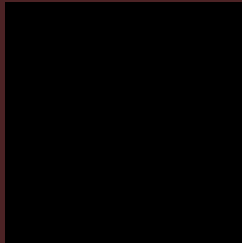
Large Text (above 18pt) WCAG AAA × Fail

Any Text WCAG AAA × Fail

If you want to check with other color combinations, try the [Color Contrast Checker](#).

**YIQ 47.4870, 23.7940, 9.3140**

## **Background**



This preview shows how black text looks on a background with the YIQ color 47.4870, 23.7940, 9.3140.



This preview shows how white text looks on a background with the YIQ color 47.4870, 23.7940,



# Color Blindness Simulation

Color vision deficiency is a very complex topic, and I could not describe the different causes any better than Wikipedia does, so if you want to learn more, you should check out their [article about color blindness](#).

## Dichromacy



### Original Color

47.4870, 23.7940, 9.3140

### Protanopia

48.0280, 2.7970, -1.1310

### Deuteranopia

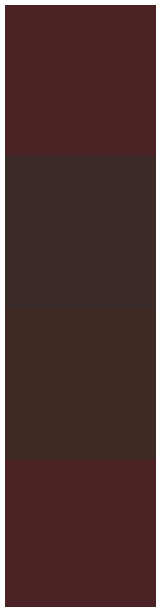
48.0350, 10.0870, -1.0890



## Tritanopia

47.4870, 23.7940, 9.3140

# Trichromacy



## Original Color

47.4870, 23.7940, 9.3140

## Protanomaly

47.5560, 10.1780, 2.7700

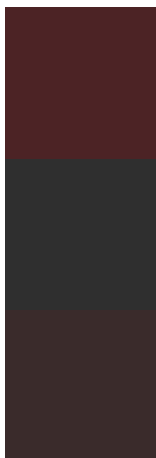
## Deuteranomaly

47.8940, 15.0380, 2.7980

## Tritanomaly

47.4870, 23.7940, 9.3140

# Monochromacy



## Original Color

47.4870, 23.7940, 9.3140

## Achromatopsia

47.0000, 0.0000, 0.0000

## Achromatomaly

47.4850, 8.9400, 3.1800

# CSS Examples

## Text

The CSS property to change the color of the text to YIQ 47.4870, 23.7940, 9.3140 is called "color". The color property can be set on classes, ids or directly on the HTML element.

This example shows how text in the color `rgb(76, 35, 37)` looks like.

```
.text, #text, p{  
    color:rgb(76, 35, 37)  
}
```

If you want to add a text shadow in that color use the text-shadow property, you can generate a text shadow directly with our [CSS Text Shadow Generator](#).

Here you see how black text with a 4 pixel rgb(76, 35, 37) colored shadow looks like.

```
.shadow{ text-shadow: 4px 4px 2px rgb(76, 35, 37) }
```

## Border

The CSS property to change the border of an element to YIQ 47.4870, 23.7940, 9.3140 is called "border". The border property can be set on classes, ids or directly on the HTML element.

This example shows the color as border, it can be applied via the CSS property "border" or "border-color".

```
.border, #border, table{ border:4px solid rgb(76, 35, 37) }
```



If only the border color should be changed use the property border-color.

```
.border{ border-color:rgb(76, 35, 37) }
```

If you want to add a box shadow in that color use:

Here you see how a box with a 4 pixel rgb(76, 35, 37) colored shadow looks like.

```
.boxshadow{ -moz-box-shadow:4px 4px 4px  
4px rgb(76, 35, 37); -webkit-box-  
shadow:4px 4px 4px 4px rgb(76, 35, 37);  
box-shadow:4px 4px 4px 4px rgb(76, 35, 37)  
}
```

# Background

The CSS property to change the background color of an element to YIQ 47.4870, 23.7940, 9.3140 is called "background". The background property can be set on classes, ids or directly on the HTML element.

```
.background, #background, body{  
background: rgb(76, 35, 37) }
```

If only the background color should be changed can be used:

```
.background{ background-color: rgb(76, 35,  
37) }
```

This example shows the color as background, it is applied via the CSS property "background".

To optimize and compress your CSS code, you can use our [online CSS compressor and optimizer](#) based on csstidy. If you want to create a linear or radial gradient as background or border, check our [CSS Gradient Generator](#).

# Hey! You found this booklet interesting? Support Converting Colors with the new Membership Option!

The pro membership hides all ads, plus gives you double the colors in the color bucket, and more awesome pro features!

**[Learn more, Memberships starting at \\$2.50/m!](#)**

**Follow me  
on Twitter!**

@ConvertingColor