

Converting Colors

YIQ(47.7320, 24.4820, 7.8580)

Have a look what the booklet for
YIQ(47.7320, 24.4820, 7.8580)
contains.

YIQ(47.7320, 24.4820, 7.8580)	3
<i>Conversions</i>	4
<i>Details</i>	6
<i>Harmonies</i>	12
<i>Previews</i>	24
<i>Color Blindness Simulation</i>	28
<i>CSS Examples</i>	31

Color

**YIQ(47.7320, 24.4820,
7.8580)**

Conversions

Conversions Part 1

Format	Color
Hex	4C2422
RGB	76, 36, 34
RGB Percent	30%, 14%, 13%
CMY	0.7019, 0.8589, 0.8666
CMYK	0.00, 0.53, 0.55, 0.70
HSL	3°, 38%, 22%
HSV	3°, 55%, 30%
XYZ	3.9019, 2.9139, 1.8721
YIQ	47.7320, 24.4820, 7.8580

Conversions

Conversions Part 2

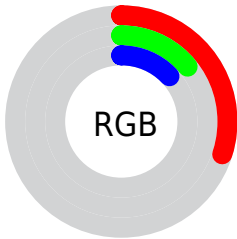
Format	Color
RYB	76, 36, 34
Decimal	4989986
CIELab	19.70, 18.62, 9.92
CIElCh	20, 21.103, 28.053
Yxy	2.9139, 0.4491, 0.3354
Android (android.graphics.Color)	4283180066 (0xFF4C2422)
YUV	47.7320, -6.7699, 24.7910
Hunter-Lab	17.0700, 10.9289, 5.4467

Details

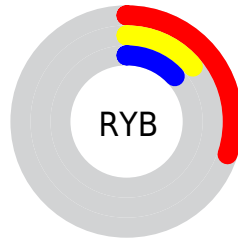
The YIQ color **47.7320, 24.4820, 7.8580** is a dark color, and the websafe version is hex **663333**. A complement of this color would be **62.2680, -24.4820, -7.8580**, and the grayscale version is **48.0000, -0.0000, 0.0000**.

A 20% lighter version of the original color is **94.9990, 28.1040, 8.2960**, and **9.3830, 18.1550, 6.8830** is the 20% darker color. If you saturate the color by 10%, you get **42.7110, 28.9750, 9.0310**, and if you desaturate by 10%, it is **52.7530, 19.9890, 6.6850**.

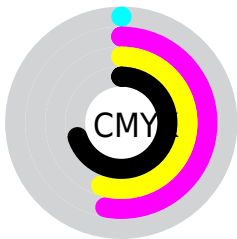
Distribution



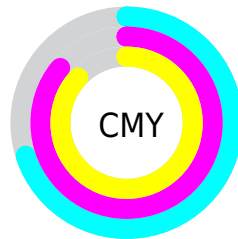
- Red (30%)
- Green (14%)
- Blue (13%)



- Red (30%)
- Yellow (14%)
- Blue (13%)



- Cyan (0%)
- Magenta (53%)
- Yellow (55%)
- Black (70%)



- Cyan (70%)
- Magenta (86%)
- Yellow (87%)

Brightness & Saturation Gradients

These gradients show how the YIQ color 47.7320, 24.4820, 7.8580 changes by changing the brightness by 10 percent. The first figure shows a shift by +10% for each color and the second figure -10%.

Similar to the brightness gradients but the following saturation gradients show a change of the YIQ color 47.7320, 24.4820, 7.8580 by changing the saturation by 10% instead.

■ 47.7320, 24.4820,
7.8580

■ 47.7320, 24.4820,
7.8580

■ 255.0000, -0.0000,
-0.0000

■ 25.7210, 23.0150,
6.9110

■ 94.9990, 28.1040,
8.2960

■ 9.3830, 18.1550,
6.8830

■ 119.8960, 29.8920,
8.9320

■ 0.0000, 0.0000,
0.0000

■ 146.0810, 30.8090,
8.8330

■ 172.9780, 32.5970,
9.4690

■ 200.2770, 33.1930,
9.6810

■ 224.8740, 26.9580,

7.0380

244.6160, 9.9490,
1.4130

47.7320, 24.4820,
7.8580

47.7320, 24.4820,
7.8580

42.7110, 28.9750,
9.0310

52.7530, 19.9890,
6.6850

37.2170, 33.4220,
11.0380

57.6600, 15.8170,
5.2010

32.1960, 37.9150,
12.2110

63.2680, 11.0490,
3.5050

27.2890, 42.0870,
13.6950

68.1750, 6.8770,
2.0210

25.0720, 44.1960,
14.0200

73.1960, 2.3840,
0.8480

■ 78.2170, -2.1090,
-0.3250

■ 83.7110, -6.5560,
-2.3320

■ 88.7320, -11.0490,
-3.5050

■ 93.6390, -15.2210,
-4.9890

Harmonies

Analogous

The Analogous color harmony consists of three colors that are next to each other on the color wheel.



48.5560, 19.3460, 12.8340



47.7320, 24.4820, 7.8580



47.2060, 22.7870, 0.0270

Triad

The Triadic color harmony groups three colors that are evenly spaced from another and form a triangle on the color wheel.



47.7320, 24.4820, 7.8580



42.1090, -11.0930, -13.7250



43.3250, -28.6560, 1.7120

Complementary

The Complementary color scheme is a pair of colors which are on the opposite of each other on the color wheel.



47.7320, 24.4820, 7.8580



62.2680, -24.4820, -7.8580

Split Complementary

Split-complementary colors differ from the complementary color scheme. The scheme consists of three colors, the original color and two neighbors of the complement color.



39.4330, -38.0080, -5.0160



47.7320, 24.4820, 7.8580



37.5290, -29.8910, -14.4590

Square

The Square scheme is like the rectangle color scheme, but the four colors are evenly spaced on the color wheel.



47.7320, 24.4820, 7.8580



44.6610, 4.9080, -11.8600



39.3530, -35.0270, -9.4830



48.4310, -8.1630, 10.2770

Rectangle

The Rectangle color scheme consists of four colors that form a rectangle on the color wheel.



47.7320, 24.4820, 7.8580



46.8910, 19.1200, -5.1040



39.3530, -35.0270, -9.4830



38.8290, -39.0630, -2.4150

Sweetspot

The Sweet Spot groups the original color and five complimentary colors.



47.7320, 24.4820, 7.8580



87.7840, 9.5360, 3.3920



51.2320, 11.8710, 21.6550



43.9900, 5.9600, 2.1200



179.0000, -0.0000, -0.0000



51.0000, -0.0000, -0.0000

Same Dimension

The Same Dimension uses a secret algorithm to generate beautiful new colors.



47.7320, 24.4820, 7.8580



55.1960, 37.9150, 12.2110



59.4720, 18.9820, -2.6020



35.7830, 2.1090, 0.3250



33.4330, 59.4170, 19.0090



75.2270, 134.0550, 43.0070

Inverse Universe

The Inverse Universe completely reimagines the original color for something new.



62.2680, -24.4820, -7.8580



77.8040, -37.9150, -12.2110



50.5280, -18.9820, 2.6020



36.8040, -2.3840, -0.8480



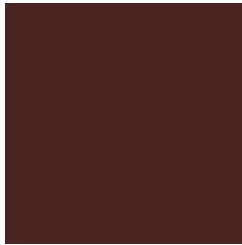
68.5670, -59.4170, -19.0090



154.7730, -134.0550, -43.0070

Previews

White Background



This preview shows how the YIQ color 47.7320, 24.4820, 7.8580 looks on a white background.

Color Contrast Check

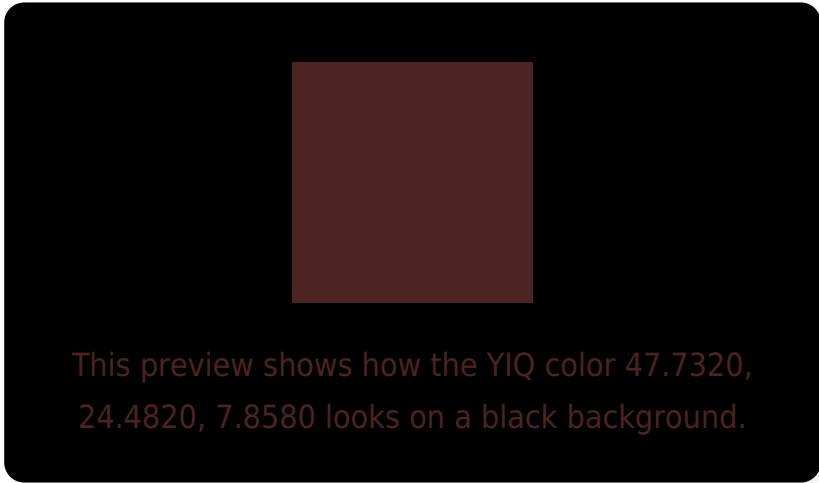
Large Text (above 18pt) WCAG AA ✓ Pass

Any Text WCAG AA ✓ Pass

Large Text (above 18pt) WCAG AAA ✓ Pass

Any Text WCAG AAA ✓ Pass

Black Background



Color Contrast Check

Large Text (above 18pt) WCAG AA × Fail

Any Text WCAG AA × Fail

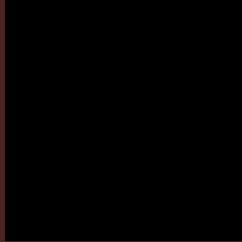
Large Text (above 18pt) WCAG AAA × Fail

Any Text WCAG AAA × Fail

If you want to check with other color combinations, try the [Color Contrast Checker](#).

YIQ 47.7320, 24.4820, 7.8580

Background



This preview shows how black text looks on a background with the YIQ color 47.7320, 24.4820, 7.8580.

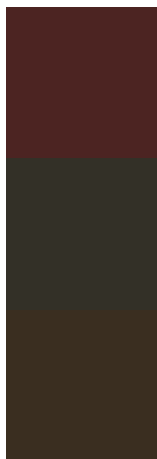


This preview shows how white text looks on a background with the YIQ color 47.7320, 24.4820,

Color Blindness Simulation

Color vision deficiency is a very complex topic, and I could not describe the different causes any better than Wikipedia does, so if you want to learn more, you should check out their [article about color blindness](#).

Dichromacy



Original Color

47.7320, 24.4820, 7.8580

Protanopia

47.8710, 4.6770, -2.1630

Deuteranopia

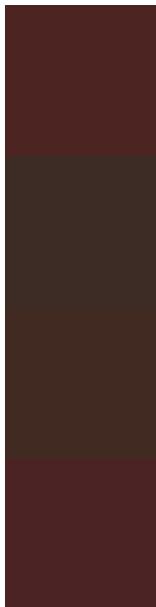
47.9920, 11.6460, -1.8100



Tritanopia

47.6010, 23.4730, 9.6250

Trichromacy



Original Color

47.7320, 24.4820, 7.8580

Protanomaly

47.9860, 11.7830, 1.2150

Deuteranomaly

47.8510, 16.5970, 2.0770

Tritanomaly

47.4870, 23.7940, 9.3140

Monochromacy



Original Color

47.7320, 24.4820, 7.8580

Achromatopsia

48.0000, -0.0000, 0.0000

Achromatomaly

48.0720, 8.6650, 2.6570

CSS Examples

Text

The CSS property to change the color of the text to YIQ 47.7320, 24.4820, 7.8580 is called "color". The color property can be set on classes, ids or directly on the HTML element.

This example shows how text in the color `rgb(76, 36, 34)` looks like.

```
.text, #text, p{  
    color:rgb(76, 36, 34)  
}
```

If you want to add a text shadow in that color use the text-shadow property, you can generate a text shadow directly with our [CSS Text Shadow Generator](#).

Here you see how black text with a 4 pixel rgb(76, 36, 34) colored shadow looks like.

```
.shadow{ text-shadow: 4px 4px 2px rgb(76, 36, 34) }
```

Border

The CSS property to change the border of an element to YIQ 47.7320, 24.4820, 7.8580 is called "border". The border property can be set on classes, ids or directly on the HTML element.

This example shows the color as border, it can be applied via the CSS property "border" or "border-color".

```
.border, #border, table{ border:4px solid rgb(76, 36, 34) }
```


If only the border color should be changed use the property `border-color`.

```
.border{ border-color:rgb(76, 36, 34) }
```

If you want to add a box shadow in that color use:

Here you see how a box with a 4 pixel `rgb(76, 36, 34)` colored shadow looks like.

```
.boxshadow{ -moz-box-shadow:4px 4px 4px  
4px rgb(76, 36, 34); -webkit-box-  
shadow:4px 4px 4px 4px rgb(76, 36, 34);  
box-shadow:4px 4px 4px 4px rgb(76, 36, 34)  
}
```

Background

The CSS property to change the background color of an element to YIQ 47.7320, 24.4820, 7.8580 is called "background". The background property can be set on classes, ids or directly on the HTML element.

```
.background, #background, body{  
background: rgb(76, 36, 34) }
```

If only the background color should be changed can be used:

```
.background{ background-color: rgb(76, 36,  
34) }
```

This example shows the color as background, it is applied via the CSS property "background".

To optimize and compress your CSS code, you can use our [online CSS compressor and optimizer](#) based on csstidy. If you want to create a linear or radial gradient as background or border, check our [CSS Gradient Generator](#).

Hey! You found this booklet
interesting? Support Converting
Colors with the new Membership
Option!

The pro membership hides all ads, plus gives you
double the colors in the color bucket, and more
awesome pro features!

[Learn more, Memberships starting at \\$2.50/m!](#)

**Follow me
on Twitter!**

@ConvertingColor