

Converting Colors

YIQ(48.6490, 14.3500, 4.2540)

Have a look what the booklet for
YIQ(48.6490, 14.3500, 4.2540)
contains.

YIQ(48.6490, 14.3500, 4.2540)	3
<i>Conversions</i>	4
<i>Details</i>	6
<i>Harmonies</i>	12
<i>Previews</i>	24
<i>Color Blindness Simulation</i>	28
<i>CSS Examples</i>	31

Color

**YIQ(48.6490, 14.3500,
4.2540)**

Conversions

Conversions Part 1

Format	Color
Hex	412A28
RGB	65, 42, 40
RGB Percent	25%, 16%, 16%
CMY	0.7450, 0.8353, 0.8431
CMYK	0.00, 0.35, 0.38, 0.75
HSL	5°, 24%, 21%
HSV	5°, 38%, 25%
XYZ	3.3918, 2.9328, 2.3961
YIQ	48.6490, 14.3500, 4.2540

Conversions

Conversions Part 2

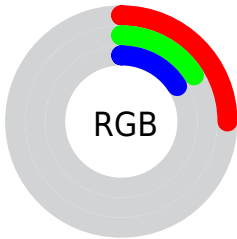
Format	Color
R_{YB}	65, 42, 40
Decimal	4270632
CIE _{Lab}	19.77, 10.42, 5.63
CIE _{LCh}	20, 11.844, 28.386
Yxy	2.9328, 0.3889, 0.3363
Android (android.graphics.Color)	4282460712 (0xFF412A28)
YUV	48.6490, -4.2640, 14.3398
Hunter-Lab	17.1255, 5.3828, 3.6922

Details

The YIQ color **48.6490, 14.3500, 4.2540** is a dark color, and the websafe version is hex **333333**. A complement of this color would be **56.3510, -14.3500, -4.2540**, and the grayscale version is **49.0000, -0.0000, -0.0000**.

A 20% lighter version of the original color is **95.4320, 16.4590, 4.5790**, and **6.2790, 12.5160, 4.4520** is the 20% darker color. If you saturate the color by 10%, you get **44.4430, 17.9260, 5.5260**, and if you desaturate by 10%, it is **52.9690, 10.4530, 3.2930**.

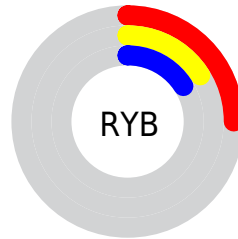
Distribution



Red (25%)

Green (16%)

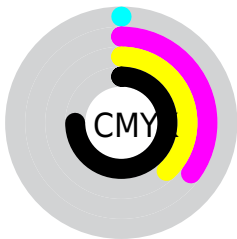
Blue (16%)



Red (25%)

Yellow (16%)

Blue (16%)

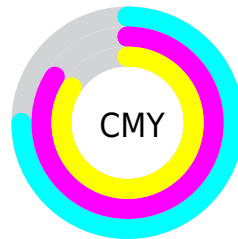


Cyan (0%)

Magenta (35%)

Yellow (38%)

Black (75%)



Cyan (75%)

Magenta (84%)

Yellow (84%)

Brightness & Saturation Gradients

These gradients show how the YIQ color 48.6490, 14.3500, 4.2540 changes by changing the brightness by 10 percent. The first figure shows a shift by +10% for each color and the second figure -10%.

Similar to the brightness gradients but the following saturation gradients show a change of the YIQ color 48.6490, 14.3500, 4.2540 by changing the saturation by 10% instead.

■ 48.6490, 14.3500,
4.2540

■ 48.6490, 14.3500,
4.2540

■ 255.0000, -0.0000,
-0.0000

■ 27.1650, 12.8370,
4.1410

■ 94.8450, 16.7340,
5.1020

■ 6.2790, 12.5160,
4.4520

■ 120.0300, 17.6510,
5.0030

■ 0.0000, 0.0000,
0.0000

■ 145.4430, 17.9260,
5.5260

■ 172.6280, 18.8430,
5.4270

■ 199.9270, 19.4390,
5.6390

■ 227.8130, 19.7600,

5.3280

249.0500, 5.7310,
0.7630

48.6490, 14.3500,
4.2540

48.6490, 14.3500,
4.2540

44.4430, 17.9260,
5.5260

52.9690, 10.4530,
3.2930

40.1230, 21.8230,
6.4870

57.1750, 6.8770,
2.0210

35.9170, 25.3990,
7.7590

61.4950, 2.9800,
1.0600

31.5970, 29.2960,
8.7200

65.7010, -0.5960,
-0.2120

27.3910, 32.8720,
9.9920

70.0210, -4.4930,
-1.1730

■ 23.0710, 36.7690,
10.9530

■ 74.2270, -8.0690,
-2.4450

■ 22.3700, 37.3650,
11.1650

■ 78.5470, -11.9660,
-3.4060

■ 82.7530, -15.5420,
-4.6780

■ 87.0730, -19.4390,
-5.6390

Harmonies

Analogous

The Analogous color harmony consists of three colors that are next to each other on the color wheel.



48.7890, 11.1400, 7.3640



48.6490, 14.3500, 4.2540



47.8290, 13.6630, 0.1830

Triad

The Triadic color harmony groups three colors that are evenly spaced from another and form a triangle on the color wheel.



48.6490, 14.3500, 4.2540



45.4350, -5.9590, -7.6470



46.9370, -12.8840, 2.2200

Complementary

The Complementary color scheme is a pair of colors which are on the opposite of each other on the color wheel.



48.6490, 14.3500, 4.2540



56.3510, -14.3500, -4.2540

Split Complementary

Split-complementary colors differ from the complementary color scheme. The scheme consists of three colors, the original color and two neighbors of the complement color.



44.4800, -19.0270, -2.0910



48.6490, 14.3500, 4.2540



44.2430, -14.1660, -7.5900

Square

The Square scheme is like the rectangle color scheme, but the four colors are evenly spaced on the color wheel.



48.6490, 14.3500, 4.2540



46.4530, 2.7980, -6.6580



43.1870, -19.7600, -5.3280



48.5360, -4.2650, 5.7110

Rectangle

The Rectangle color scheme consists of four colors that form a rectangle on the color wheel.



48.6490, 14.3500, 4.2540



47.5790, 11.3710, -2.3330



43.1870, -19.7600, -5.3280



46.3280, -15.5430, 0.8490

Sweetspot

The Sweet Spot groups the original color and five complimentary colors.



48.6490, 14.3500, 4.2540



77.5770, 5.6850, 1.5970



50.0970, 7.5170, 12.4530



39.3810, 3.3010, 0.7490



171.0000, -0.0000, -0.0000



43.0000, -0.0000, -0.0000

Same Dimension

The Same Dimension uses a secret algorithm to generate beautiful new colors.



48.6490, 14.3500, 4.2540



59.0090, 22.1440, 6.1760



55.6930, 11.0500, -2.0220



30.8970, 1.7880, 0.6360



33.6990, 55.6120, 16.3800



77.5420, 128.5540, 38.0740

Inverse Universe

The Inverse Universe completely reimagines the original color for something new.



56.3510, -14.3500, -4.2540



70.5780, -22.4190, -6.6990



49.3070, -11.0500, 2.0220



32.1030, -1.7880, -0.6360



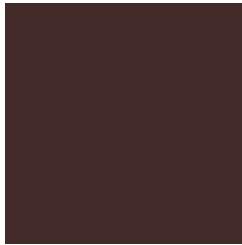
63.3010, -55.6120, -16.3800



147.0450, -128.8290, -38.5970

Previews

White Background



This preview shows how the YIQ color 48.6490, 14.3500, 4.2540 looks on a white background.

Color Contrast Check

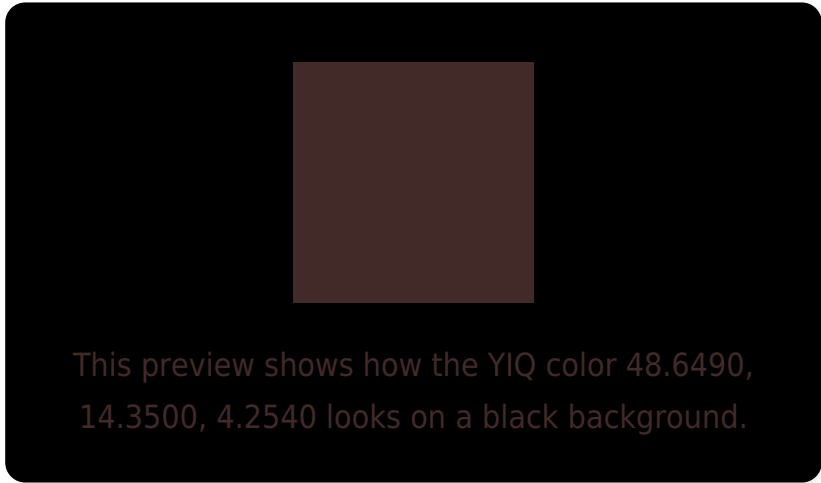
Large Text (above 18pt) WCAG AA ✓ Pass

Any Text WCAG AA ✓ Pass

Large Text (above 18pt) WCAG AAA ✓ Pass

Any Text WCAG AAA ✓ Pass

Black Background



Color Contrast Check

Large Text (above 18pt) WCAG AA × Fail

Any Text WCAG AA × Fail

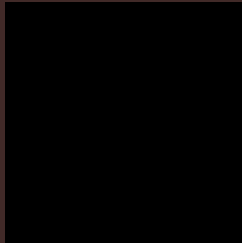
Large Text (above 18pt) WCAG AAA × Fail

Any Text WCAG AAA × Fail

If you want to check with other color combinations, try the [Color Contrast Checker](#).

YIQ 48.6490, 14.3500, 4.2540

Background



This preview shows how black text looks on a background with the YIQ color 48.6490, 14.3500, 4.2540.

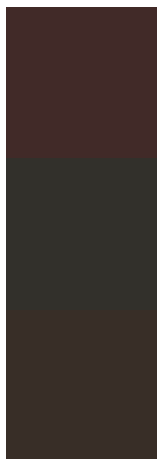


This preview shows how white text looks on a background with the YIQ color 48.6490, 14.3500,

Color Blindness Simulation

Color vision deficiency is a very complex topic, and I could not describe the different causes any better than Wikipedia does, so if you want to learn more, you should check out their [article about color blindness](#).

Dichromacy



Original Color

48.6490, 14.3500, 4.2540

Protanopia

48.0280, 2.7970, -1.1310

Deuteranopia

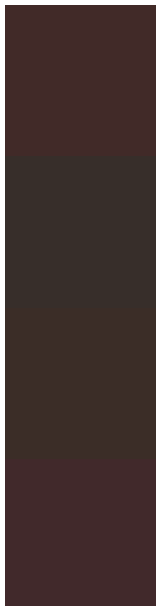
48.1920, 8.2070, -0.0570



Tritanopia

48.5180, 13.3410, 6.0210

Trichromacy



Original Color

48.6490, 14.3500, 4.2540

Protanomaly

48.2350, 6.6480, 0.6640

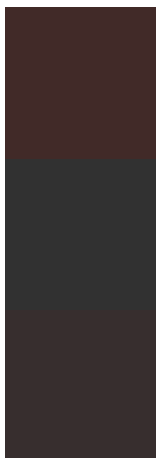
Deuteranomaly

48.5020, 10.2700, 1.1020

Tritanomaly

48.4040, 13.6620, 5.7100

Monochromacy



Original Color

48.6490, 14.3500, 4.2540

Achromatopsia

49.0000, -0.0000, -0.0000

Achromatomaly

48.6910, 5.3640, 1.9080

CSS Examples

Text

The CSS property to change the color of the text to YIQ 48.6490, 14.3500, 4.2540 is called "color". The color property can be set on classes, ids or directly on the HTML element.

This example shows how text in the color `rgb(65, 42, 40)` looks like.

```
.text, #text, p{  
    color:rgb(65, 42, 40)  
}
```

If you want to add a text shadow in that color use the text-shadow property, you can generate a text shadow directly with our [CSS Text Shadow Generator](#).

Here you see how black text with a 4 pixel rgb(65, 42, 40) colored shadow looks like.

```
.shadow{ text-shadow: 4px 4px 2px rgb(65, 42, 40) }
```

Border

The CSS property to change the border of an element to YIQ 48.6490, 14.3500, 4.2540 is called "border". The border property can be set on classes, ids or directly on the HTML element.

This example shows the color as border, it can be applied via the CSS property "border" or "border-color".

```
.border, #border, table{ border:4px solid rgb(65, 42, 40) }
```


If only the border color should be changed use the property `border-color`.

```
.border{ border-color:rgb(65, 42, 40) }
```

If you want to add a box shadow in that color use:

Here you see how a box with a 4 pixel `rgb(65, 42, 40)` colored shadow looks like.

```
.boxshadow{ -moz-box-shadow:4px 4px 4px  
4px rgb(65, 42, 40); -webkit-box-  
shadow:4px 4px 4px 4px rgb(65, 42, 40);  
box-shadow:4px 4px 4px 4px rgb(65, 42, 40)  
}
```

Background

The CSS property to change the background color of an element to YIQ 48.6490, 14.3500, 4.2540 is called "background". The background property can be set on classes, ids or directly on the HTML element.

```
.background, #background, body{  
background: rgb(65, 42, 40) }
```

If only the background color should be changed can be used:

```
.background{ background-color: rgb(65, 42,  
40) }
```

This example shows the color as background, it is applied via the CSS property "background".

To optimize and compress your CSS code, you can use our [online CSS compressor and optimizer](#) based on csstidy. If you want to create a linear or radial gradient as background or border, check our [CSS Gradient Generator](#).

Hey! You found this booklet interesting? Support Converting Colors with the new Membership Option!

The pro membership hides all ads, plus gives you double the colors in the color bucket, and more awesome pro features!

[Learn more, Memberships starting at \\$2.50/m!](#)

**Follow me
on Twitter!**

@ConvertingColor