

# Converting Colors

YIQ(49.2290, 33.1480, 4.9880)

Have a look what the booklet for  
YIQ(49.2290, 33.1480, 4.9880)  
contains.

<b>YIQ(49.2290, 33.1480, 4.9880)</b> .....	3
<b><i>Conversions</i></b> .....	4
<b><i>Details</i></b> .....	6
<b><i>Harmonies</i></b> .....	12
<b><i>Previews</i></b> .....	24
<b><i>Color Blindness Simulation</i></b> .....	28
<b><i>CSS Examples</i></b> .....	31

# Color

**YIQ(49.2290, 33.1480,  
4.9880)**

# Conversions

## Conversions Part 1

<b>Format</b>	<b>Color</b>
Hex	542515
RGB	84, 37, 21
RGB Percent	33%, 15%, 8%
CMY	0.6705, 0.8550, 0.9175
CMYK	0.00, 0.56, 0.75, 0.67
HSL	15°, 60%, 21%
HSV	15°, 75%, 33%
XYZ	4.4551, 3.2622, 1.1061
YIQ	49.2290, 33.1480, 4.9880

# Conversions

## Conversions Part 2

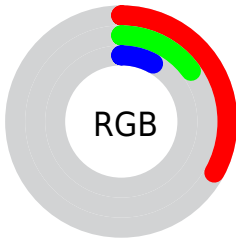
<b>Format</b>	<b>Color</b>
<b>RYB</b>	84, 42, 21
Decimal	5514517
CIELab	21.06, 20.52, 20.59
CIELCh	21, 29.066, 45.102
Yxy	3.2622, 0.5049, 0.3697
Android (android.graphics.Color)	4283704597 (0xFF542515)
YUV	49.2290, -13.9169, 30.4942
Hunter-Lab	18.0616, 12.4217, 9.0121

# Details

The YIQ color **49.2290, 33.1480, 4.9880** is a dark color, and the websafe version is hex **663333**. A complement of this color would be **55.7710, -33.1480, -4.9880**, and the grayscale version is **49.0000, -0.0000, -0.0000**.

A 20% lighter version of the original color is **96.9800, 38.2830, 5.5390**, and **10.7640, 21.4560, 7.6320** is the 20% darker color. If you saturate the color by 10%, you get **44.7950, 37.3660, 5.6380**, and if you desaturate by 10%, it is **53.6630, 28.9300, 4.3380**.

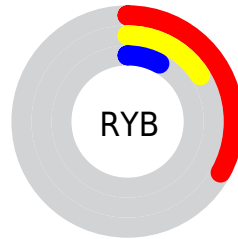
# Distribution



Red (33%)

Green (15%)

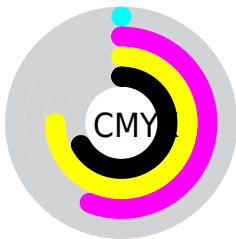
Blue (8%)



Red (33%)

Yellow (16%)

Blue (8%)

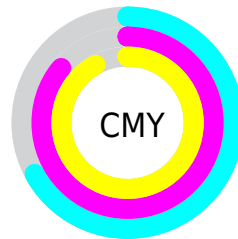


Cyan (0%)

Magenta (56%)

Yellow (75%)

Black (67%)



Cyan (67%)

Magenta (86%)

Yellow (92%)

# Brightness & Saturation Gradients

These gradients show how the YIQ color 49.2290, 33.1480, 4.9880 changes by changing the brightness by 10 percent. The first figure shows a shift by +10% for each color and the second figure -10%.

Similar to the brightness gradients but the following saturation gradients show a change of the YIQ color 49.2290, 33.1480, 4.9880 by changing the saturation by 10% instead.



■ 49.2290, 33.1480,  
4.9880

■ 49.2290, 33.1480,  
4.9880

■ 254.2020, 2.2470,  
-2.1770

■ 26.4460, 31.0390,  
4.6630

■ 96.9800, 38.2830,  
5.5390

■ 10.7640, 21.4560,  
7.6320

■ 122.7630, 40.3920,  
5.8640

■ 0.0000, 0.0000,  
0.0000

■ 148.5460, 42.5010,  
6.1890

■ 175.4430, 44.2890,  
6.8250

■ 203.5140, 45.5270,  
6.4150

■ 223.6370, 31.8190,

1.5390

■ 243.8520, 14.8560,  
-4.9200

■ 49.2290, 33.1480,  
4.9880

■ 49.2290, 33.1480,  
4.9880

■ 44.7950, 37.3660,  
5.6380

■ 53.6630, 28.9300,  
4.3380

■ 39.6600, 42.1800,  
6.5000

■ 58.7980, 24.1160,  
3.4760

■ 37.4430, 44.2890,  
6.8250

■ 63.2320, 19.8980,  
2.8260

■ 67.7800, 15.3590,  
2.4870

■ 72.2140, 11.1410,  
1.8370

■ 77.2350, 6.6480,  
0.6640

■ 81.7830, 2.1090,  
0.3250

■ 86.2170, -2.1090,  
-0.3250

■ 90.7650, -6.6480,  
-0.6640

# Harmonies

## Analogous

The Analogous color harmony consists of three colors that are next to each other on the color wheel.



49.4820, 31.3580, 15.4060



49.2290, 33.1480, 4.9880



48.8010, 28.0610, -7.4510

# Triad

The Triadic color harmony groups three colors that are evenly spaced from another and form a triangle on the color wheel.



49.2290, 33.1480, 4.9880



39.6660, -29.0190, -19.2510



47.9220, -25.7230, 9.1330

# Complementary

The Complementary color scheme is a pair of colors which are on the opposite of each other on the color wheel.



49.2290, 33.1480, 4.9880



55.7710, -33.1480, -4.9880

# Split Complementary

Split-complementary colors differ from the complementary color scheme. The scheme consists of three colors, the original color and two neighbors of the complement color.



43.3600, -44.9320, -0.6760



49.2290, 33.1480, 4.9880



42.7610, -36.3560, -12.9320

# Square

The Square scheme is like the rectangle color scheme, but the four colors are evenly spaced on the color wheel.



49.2290, 33.1480, 4.9880



44.1710, -5.6360, -19.0120



44.4540, -42.5010, -6.1890



52.1490, 1.7390, 18.0510



# Rectangle

The Rectangle color scheme consists of four colors that form a rectangle on the color wheel.



49.2290, 33.1480, 4.9880



47.3930, 20.2220, -14.0660



44.4540, -42.5010, -6.1890



42.0230, -42.3650, 2.3630

# Sweetspot

The Sweet Spot groups the original color and five complimentary colors.



49.2290, 33.1480, 4.9880



96.6980, 12.6540, 1.9500



45.1950, 22.4610, 27.9730



47.9470, 7.5190, 1.3990



184.0000, 0.0000, -0.0000



56.0000, -0.0000, 0.0000



# Same Dimension

The Same Dimension uses a secret algorithm to generate beautiful new colors.



49.2290, 33.1480, 4.9880



55.2760, 52.1290, 7.9130



67.4260, 24.6230, -11.2250



38.7830, 2.1090, 0.3250



46.6570, 55.4300, 8.6620



104.0010, 122.0470, 18.3270



# Inverse Universe

The Inverse Universe completely reimagines the original color for something new.



55.7710, -33.1480, -4.9880



65.7240, -52.1290, -7.9130



37.5740, -24.6230, 11.2250



39.2170, -2.1090, -0.3250



57.7560, -55.1550, -8.1390

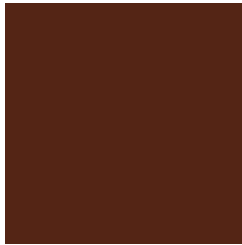


127.9990, -122.0470, -18.3270



# Previews

## White Background



This preview shows how the YIQ color 49.2290, 33.1480, 4.9880 looks on a white background.

## Color Contrast Check

Large Text (above 18pt) WCAG AA ✓ Pass

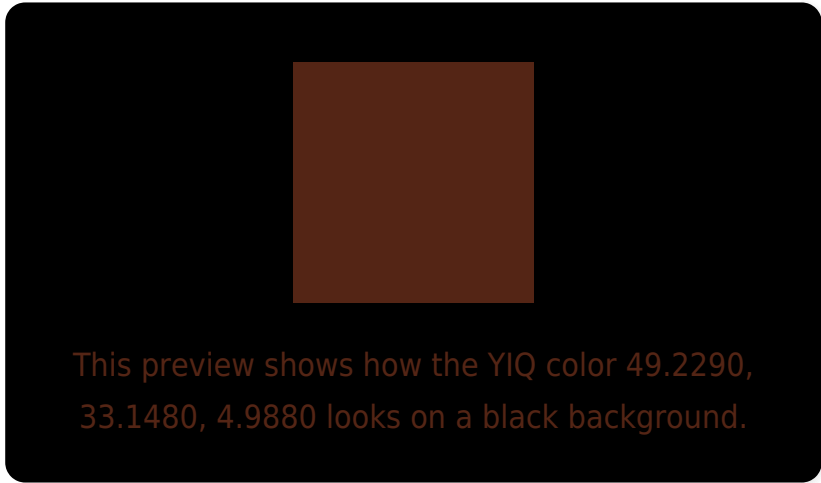
Any Text WCAG AA ✓ Pass

Large Text (above 18pt) WCAG AAA ✓ Pass

Any Text WCAG AAA ✓ Pass



# Black Background



## Color Contrast Check

Large Text (above 18pt) WCAG AA × Fail

Any Text WCAG AA × Fail

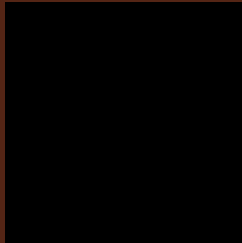
Large Text (above 18pt) WCAG AAA × Fail

Any Text WCAG AAA × Fail

If you want to check with other color combinations, try the [Color Contrast Checker](#).

**YIQ 49.2290, 33.1480, 4.9880**

## **Background**



This preview shows how black text looks on a background with the YIQ color 49.2290, 33.1480, 4.9880.



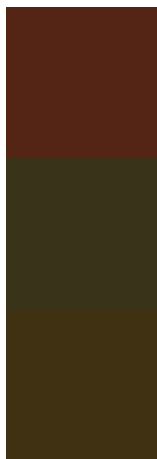
This preview shows how white text looks on a background with the YIQ color 49.2290, 33.1480,



# Color Blindness Simulation

Color vision deficiency is a very complex topic, and I could not describe the different causes any better than Wikipedia does, so if you want to learn more, you should check out their [article about color blindness](#).

## Dichromacy



### Original Color

49.2290, 33.1480, 4.9880

### Protanopia

50.4170, 11.6470, -7.3370

### Deuteranopia

49.9510, 18.8910, -6.4610



## Tritanopia

50.1780, 29.1580, 11.2220

# Trichromacy



## Original Color

49.2290, 33.1480, 4.9880

## Protanomaly

50.3580, 19.3030, -2.9130

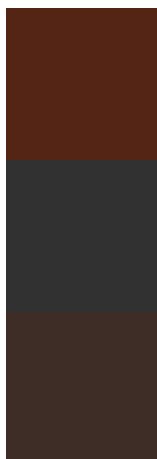
## Deuteranomaly

49.8100, 23.8420, -2.5740

## Tritanomaly

50.0810, 30.8090, 8.8330

# Monochromacy



## Original Color

49.2290, 33.1480, 4.9880

## Achromatopsia

49.0000, -0.0000, -0.0000

## Achromatomaly

49.3990, 12.0580, 1.7380

# CSS Examples

## Text

The CSS property to change the color of the text to YIQ 49.2290, 33.1480, 4.9880 is called "color". The color property can be set on classes, ids or directly on the HTML element.

This example shows how text in the color `rgb(84, 37, 21)` looks like.

```
.text, #text, p{  
    color:rgb(84, 37, 21)  
}
```

If you want to add a text shadow in that color use the text-shadow property, you can generate a text shadow directly with our [CSS Text Shadow Generator](#).

Here you see how black text with a 4 pixel rgb(84, 37, 21) colored shadow looks like.

```
.shadow{ text-shadow: 4px 4px 2px rgb(84, 37, 21) }
```

## Border

The CSS property to change the border of an element to YIQ 49.2290, 33.1480, 4.9880 is called "border". The border property can be set on classes, ids or directly on the HTML element.

This example shows the color as border, it can be applied via the CSS property "border" or "border-color".

```
.border, #border, table{ border:4px solid rgb(84, 37, 21) }
```



If only the border color should be changed use the property `border-color`.

```
.border{ border-color:rgb(84, 37, 21) }
```

If you want to add a box shadow in that color use:

Here you see how a box with a 4 pixel `rgb(84, 37, 21)` colored shadow looks like.

```
.boxshadow{ -moz-box-shadow:4px 4px 4px  
4px rgb(84, 37, 21); -webkit-box-  
shadow:4px 4px 4px 4px rgb(84, 37, 21);  
box-shadow:4px 4px 4px 4px rgb(84, 37, 21)  
}
```

# Background

The CSS property to change the background color of an element to YIQ 49.2290, 33.1480, 4.9880 is called "background". The background property can be set on classes, ids or directly on the HTML element.

```
.background, #background, body{  
background: rgb(84, 37, 21) }
```

If only the background color should be changed can be used:

```
.background{ background-color: rgb(84, 37,  
21) }
```

This example shows the color as background, it is applied via the CSS property "background".

To optimize and compress your CSS code, you can use our [online CSS compressor and optimizer](#) based on csstidy. If you want to create a linear or radial gradient as background or border, check our [CSS Gradient Generator](#).

Hey! You found this booklet  
interesting? Support Converting  
Colors with the new Membership  
Option!

The pro membership hides all ads, plus gives you  
double the colors in the color bucket, and more  
awesome pro features!

**[Learn more, Memberships starting at \\$2.50/m!](#)**

**Follow me  
on Twitter!**

@ConvertingColor