

Converting Colors

YIQ(50.6110, 17.5130, 7.5050)

Have a look what the booklet for
YIQ(50.6110, 17.5130, 7.5050)
contains.

YIQ(50.6110, 17.5130, 7.5050)	3
<i>Conversions</i>	4
<i>Details</i>	6
<i>Harmonies</i>	12
<i>Previews</i>	24
<i>Color Blindness Simulation</i>	28
<i>CSS Examples</i>	31

Color

**YIQ(50.6110, 17.5130,
7.5050)**

Conversions

Conversions Part 1

Format	Color
Hex	48292C
RGB	72, 41, 44
RGB Percent	28%, 16%, 17%
CMY	0.7176, 0.8393, 0.8274
CMYK	0.00, 0.43, 0.39, 0.72
HSL	354°, 27%, 22%
HSV	354°, 43%, 28%
XYZ	3.9214, 3.1454, 2.7850
YIQ	50.6110, 17.5130, 7.5050

Conversions

Conversions Part 2

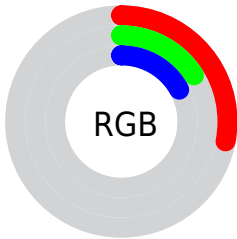
Format	Color
RYB	72, 41, 44
Decimal	4729132
CIELab	20.62, 14.94, 4.21
CIELCh	21, 15.519, 15.723
Yxy	3.1454, 0.3980, 0.3193
Android (android.graphics.Color)	4282919212 (0xFF48292C)
YUV	50.6110, -3.2592, 18.7582
Hunter-Lab	17.7353, 8.4304, 3.1043

Details

The YIQ color **50.6110, 17.5130, 7.5050** is a dark color, and the websafe version is hex **663333**. A complement of this color would be **62.3890, -17.5130, -7.5050**, and the grayscale version is **51.0000, -0.0000, -0.0000**.

A 20% lighter version of the original color is **97.6930, 20.2180, 8.0420**, and **8.9700, 17.8800, 6.3600** is the 20% darker color. If you saturate the color by 10%, you get **45.8180, 21.3640, 9.3000**, and if you desaturate by 10%, it is **55.5180, 13.3410, 6.0210**.

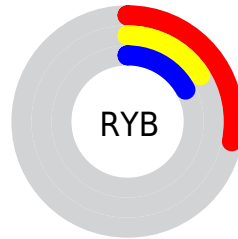
Distribution



Red (28%)

Green (16%)

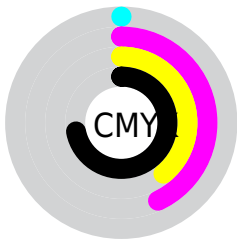
Blue (17%)



Red (28%)

Yellow (16%)

Blue (17%)

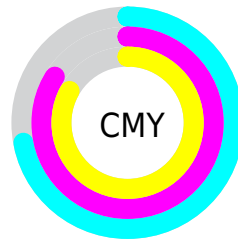


Cyan (0%)

Magenta (43%)

Yellow (39%)

Black (72%)



Cyan (72%)

Magenta (84%)

Yellow (83%)

Brightness & Saturation Gradients

These gradients show how the YIQ color 50.6110, 17.5130, 7.5050 changes by changing the brightness by 10 percent. The first figure shows a shift by +10% for each color and the second figure -10%.

Similar to the brightness gradients but the following saturation gradients show a change of the YIQ color 50.6110, 17.5130, 7.5050 by changing the saturation by 10% instead.

■ 50.6110, 17.5130,
7.5050

■ 50.6110, 17.5130,
7.5050

■ 255.0000, -0.0000,
-0.0000

■ 29.1270, 16.0000,
7.3920

■ 97.6930, 20.2180,
8.0420

■ 8.9700, 17.8800,
6.3600

■ 122.4050, 21.0890,
8.7770

■ 0.0000, 0.0000,
0.0000

■ 148.5900, 22.0060,
8.6780

■ 175.3020, 22.8770,
9.4130

■ 202.6010, 23.4730,
9.6250

■ 229.4050, 21.0890,

8.7770

249.6200, 4.1260,
2.3180

50.6110, 17.5130,
7.5050

50.6110, 17.5130,
7.5050

45.8180, 21.3640,
9.3000

55.5180, 13.3410,
6.0210

40.9110, 25.5360,
10.7840

60.3110, 9.4900,
4.2260

35.5310, 29.6620,
13.1020

65.8050, 5.0430,
2.2190

30.6240, 33.8340,
14.5860

70.5980, 1.1920,
0.4240

25.8310, 37.6850,
16.3810

75.5050, -2.9800,
-1.0600

■ 22.3260, 40.6650,
17.4410

■ 80.2980, -6.8310,
-2.8550

■ 85.2050, -11.0030,
-4.3390

■ 90.5850, -15.1290,
-6.6570

■ 95.4920, -19.3010,
-8.1410

Harmonies

Analogous

The Analogous color harmony consists of three colors that are next to each other on the color wheel.



50.7830, 11.2770, 10.3890



50.6110, 17.5130, 7.5050



49.7480, 18.3850, 2.7130

Triad

The Triadic color harmony groups three colors that are evenly spaced from another and form a triangle on the color wheel.



50.6110, 17.5130, 7.5050



46.8220, -2.7950, -9.9230



45.7940, -22.7870, -0.0270

Complementary

The Complementary color scheme is a pair of colors which are on the opposite of each other on the color wheel.



50.6110, 17.5130, 7.5050



62.3890, -17.5130, -7.5050

Split Complementary

Split-complementary colors differ from the complementary color scheme. The scheme consists of three colors, the original color and two neighbors of the complement color.



41.9020, -32.1390, -6.7550



50.6110, 17.5130, 7.5050



44.4770, -14.9450, -9.9930

Square

The Square scheme is like the rectangle color scheme, but the four colors are evenly spaced on the color wheel.



50.6110, 17.5130, 7.5050



48.2640, 7.7040, -7.4640



41.8330, -27.6910, -10.2750



49.7140, -10.6380, 5.5700

Rectangle

The Rectangle color scheme consists of four colors that form a rectangle on the color wheel.



50.6110, 17.5130, 7.5050



49.7430, 16.7810, -1.2590



41.8330, -27.6910, -10.2750



44.4730, -26.3170, -2.1330

Sweetspot

The Sweet Spot groups the original color and five complimentary colors.



50.6110, 17.5130, 7.5050



85.7020, 6.8310, 2.8550



52.9060, 6.7370, 15.5770



43.0930, 4.1720, 1.4840



176.0000, -0.0000, -0.0000



48.0000, -0.0000, 0.0000

Same Dimension

The Same Dimension uses a secret algorithm to generate beautiful new colors.



50.6110, 17.5130, 7.5050



60.2210, 27.5990, 11.9430



57.3130, 15.1760, 0.2960



33.1960, 2.3840, 0.8480



30.7410, 55.7940, 24.0980



70.3810, 128.2300, 54.9660

Inverse Universe

The Inverse Universe completely reimagines the original color for something new.



50.6110, 17.5130, 7.5050



60.2210, 27.5990, 11.9430



55.6870, -15.1760, -0.2960



33.1960, 2.3840, 0.8480



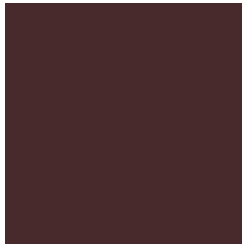
30.7410, 55.7940, 24.0980



70.3810, 128.2300, 54.9660

Previews

White Background



This preview shows how the YIQ color 50.6110, 17.5130, 7.5050 looks on a white background.

Color Contrast Check

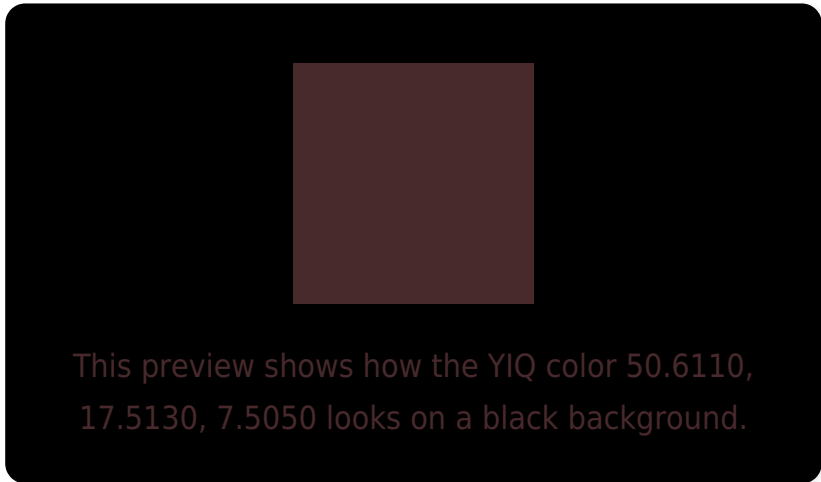
Large Text (above 18pt) WCAG AA ✓ Pass

Any Text WCAG AA ✓ Pass

Large Text (above 18pt) WCAG AAA ✓ Pass

Any Text WCAG AAA ✓ Pass

Black Background



Color Contrast Check

Large Text (above 18pt) WCAG AA × Fail

Any Text WCAG AA × Fail

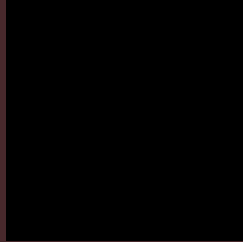
Large Text (above 18pt) WCAG AAA × Fail

Any Text WCAG AAA × Fail

If you want to check with other color combinations, try the [Color Contrast Checker](#).

YIQ 50.6110, 17.5130, 7.5050

Background



This preview shows how black text looks on a background with the YIQ color 50.6110, 17.5130, 7.5050.

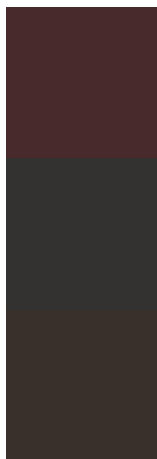


This preview shows how white text looks on a background with the YIQ color 50.6110, 17.5130,

Color Blindness Simulation

Color vision deficiency is a very complex topic, and I could not describe the different causes any better than Wikipedia does, so if you want to learn more, you should check out their [article about color blindness](#).

Dichromacy



Original Color

50.6110, 17.5130, 7.5050

Protanopia

50.1850, 0.9170, -0.0990

Deuteranopia

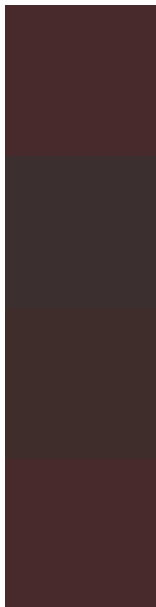
50.4200, 7.5650, 0.5650



Tritanopia

50.6110, 17.5130, 7.5050

Trichromacy



Original Color

50.6110, 17.5130, 7.5050

Protanomaly

50.5880, 7.1520, 2.5440

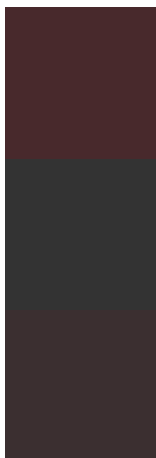
Deuteranomaly

50.1540, 11.3700, 3.1940

Tritanomaly

50.6110, 17.5130, 7.5050

Monochromacy



Original Color

50.6110, 17.5130, 7.5050

Achromatopsia

51.0000, -0.0000, -0.0000

Achromatomaly

50.7020, 6.8310, 2.8550

CSS Examples

Text

The CSS property to change the color of the text to YIQ 50.6110, 17.5130, 7.5050 is called "color". The color property can be set on classes, ids or directly on the HTML element.

This example shows how text in the color `rgb(72, 41, 44)` looks like.

```
.text, #text, p{  
    color:rgb(72, 41, 44)  
}
```

If you want to add a text shadow in that color use the text-shadow property, you can generate a text shadow directly with our [CSS Text Shadow Generator](#).

Here you see how black text with a 4 pixel rgb(72, 41, 44) colored shadow looks like.

```
.shadow{ text-shadow: 4px 4px 2px rgb(72, 41, 44) }
```

Border

The CSS property to change the border of an element to YIQ 50.6110, 17.5130, 7.5050 is called "border". The border property can be set on classes, ids or directly on the HTML element.

This example shows the color as border, it can be applied via the CSS property "border" or "border-color".

```
.border, #border, table{ border:4px solid rgb(72, 41, 44) }
```


If only the border color should be changed use the property `border-color`.

```
.border{ border-color:rgb(72, 41, 44) }
```

If you want to add a box shadow in that color use:

Here you see how a box with a 4 pixel `rgb(72, 41, 44)` colored shadow looks like.

```
.boxshadow{ -moz-box-shadow:4px 4px 4px  
4px rgb(72, 41, 44); -webkit-box-  
shadow:4px 4px 4px 4px rgb(72, 41, 44);  
box-shadow:4px 4px 4px 4px rgb(72, 41, 44)  
}
```

Background

The CSS property to change the background color of an element to YIQ 50.6110, 17.5130, 7.5050 is called "background". The background property can be set on classes, ids or directly on the HTML element.

```
.background, #background, body{  
background: rgb(72, 41, 44) }
```

If only the background color should be changed can be used:

```
.background{ background-color: rgb(72, 41,  
44) }
```

This example shows the color as background, it is applied via the CSS property "background".

To optimize and compress your CSS code, you can use our [online CSS compressor and optimizer](#) based on csstidy. If you want to create a linear or radial gradient as background or border, check our [CSS Gradient Generator](#).

Hey! You found this booklet interesting? Support Converting Colors with the new Membership Option!

The pro membership hides all ads, plus gives you double the colors in the color bucket, and more awesome pro features!

[Learn more, Memberships starting at \\$2.50/m!](#)

**Follow me
on Twitter!**

@ConvertingColor