

Converting Colors

YIQ(52.6500, 21.7770, 7.3210)

Have a look what the booklet for
YIQ(52.6500, 21.7770, 7.3210)
contains.

YIQ(52.6500, 21.7770, 7.3210)	3
<i>Conversions</i>	4
<i>Details</i>	6
<i>Harmonies</i>	12
<i>Previews</i>	24
<i>Color Blindness Simulation</i>	28
<i>CSS Examples</i>	31

Color

**YIQ(52.6500, 21.7770,
7.3210)**

Conversions

Conversions Part 1

Format	Color
Hex	4E2A29
RGB	78, 42, 41
RGB Percent	31%, 16%, 16%
CMY	0.6940, 0.8353, 0.8391
CMYK	0.00, 0.46, 0.47, 0.69
HSL	2°, 31%, 23%
HSV	2°, 47%, 31%
XYZ	4.3717, 3.4357, 2.5326
YIQ	52.6500, 21.7770, 7.3210

Conversions

Conversions Part 2

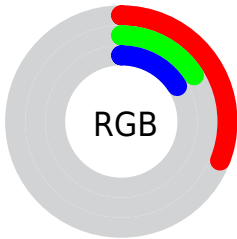
Format	Color
RYB	78, 42, 41
Decimal	5122601
CIELab	21.71, 16.60, 7.93
CIElCh	22, 18.396, 25.527
Yxy	3.4357, 0.4228, 0.3323
Android (android.graphics.Color)	4283312681 (0xFF4E2A29)
YUV	52.6500, -5.7434, 22.2320
Hunter-Lab	18.5357, 9.6624, 4.8740

Details

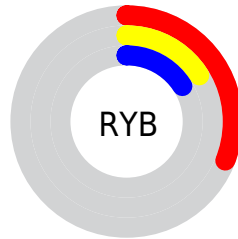
The YIQ color **52.6500, 21.7770, 7.3210** is a dark color, and the websafe version is hex **663333**. A complement of this color would be **66.3500, -21.7770, -7.3210**, and the grayscale version is **53.0000, -0.0000, -0.0000**.

A 20% lighter version of the original color is **100.0310, 25.0780, 8.0700**, and **10.1660, 20.2640, 7.2080** is the 20% darker color. If you saturate the color by 10%, you get **47.0420, 26.5450, 9.0170**, and if you desaturate by 10%, it is **58.2580, 17.0090, 5.6250**.

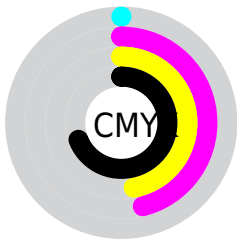
Distribution



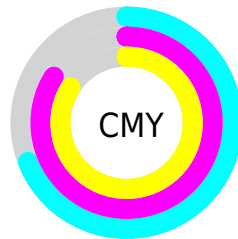
- Red (31%)
- Green (16%)
- Blue (16%)



- Red (31%)
- Yellow (16%)
- Blue (16%)



- Cyan (0%)
- Magenta (46%)
- Yellow (47%)
- Black (69%)



- Cyan (69%)
- Magenta (84%)
- Yellow (84%)

Brightness & Saturation Gradients

These gradients show how the YIQ color 52.6500, 21.7770, 7.3210 changes by changing the brightness by 10 percent. The first figure shows a shift by +10% for each color and the second figure -10%.

Similar to the brightness gradients but the following saturation gradients show a change of the YIQ color 52.6500, 21.7770, 7.3210 by changing the saturation by 10% instead.

■ 52.6500, 21.7770,
7.3210

■ 52.6500, 21.7770,
7.3210

■ 255.0000, -0.0000,
-0.0000

■ 30.8670, 19.6680,
6.9960

■ 100.0310, 25.0780,
8.0700

■ 10.1660, 20.2640,
7.2080

■ 125.2160, 25.9950,
7.9710

■ 0.0000, 0.0000,
0.0000

■ 151.2270, 27.4620,
8.9180

■ 178.4120, 28.3790,
8.8190

■ 206.0100, 29.5710,
9.2430

■ 230.1230, 21.8230,

6.4870

249.7510, 5.1350,
0.5510

52.6500, 21.7770,
7.3210

52.6500, 21.7770,
7.3210

47.0420, 26.5450,
9.0170

58.2580, 17.0090,
5.6250

42.0210, 31.0380,
10.1900

63.2790, 12.5160,
4.4520

36.5270, 35.4850,
12.1970

68.7730, 8.0690,
2.4450

31.5060, 39.9780,
13.3700

73.7940, 3.5760,
1.2720

25.8980, 44.7460,
15.0660

79.4020, -1.1920,
-0.4240

■ 24.4960, 45.9380,
15.4900

■ 85.0100, -5.9600,
-2.1200

■ 90.0310, -10.4530,
-3.2930

■ 95.5250, -14.9000,
-5.3000

■ 100.5460,
-19.3930, -6.4730

Harmonies

Analogous

The Analogous color harmony consists of three colors that are next to each other on the color wheel.



53.0610, 16.3660, 11.7740



52.6500, 21.7770, 7.3210



52.2490, 21.2280, 0.7480

Triad

The Triadic color harmony groups three colors that are evenly spaced from another and form a triangle on the color wheel.



52.6500, 21.7770, 7.3210



48.0170, -7.8380, -12.1420



48.7770, -24.1170, 2.0510

Complementary

The Complementary color scheme is a pair of colors which are on the opposite of each other on the color wheel.



52.6500, 21.7770, 7.3210



66.3500, -21.7770, -7.3210

Split Complementary

Split-complementary colors differ from the complementary color scheme. The scheme consists of three colors, the original color and two neighbors of the complement color.



41.8950, -39.4290, -6.7970



52.6500, 21.7770, 7.3210



43.8070, -24.8020, -13.0740

Square

The Square scheme is like the rectangle color scheme, but the four colors are evenly spaced on the color wheel.



52.6500, 21.7770, 7.3210



50.0140, 5.4120, -9.9800



41.8150, -36.4480, -11.2640



52.4910, -8.3920, 8.9200

Rectangle

The Rectangle color scheme consists of four colors that form a rectangle on the color wheel.



52.6500, 21.7770, 7.3210



51.4610, 17.5150, -3.5490



41.8150, -36.4480, -11.2640



46.2600, -30.0310, -0.9030

Sweetspot

The Sweet Spot groups the original color and five complimentary colors.



52.6500, 21.7770, 7.3210



92.1860, 8.3440, 2.9680



56.1670, 10.4960, 19.0400



45.2780, 5.0890, 1.3850



179.0000, -0.0000, -0.0000



51.0000, -0.0000, -0.0000

Same Dimension

The Same Dimension uses a secret algorithm to generate beautiful new colors.



52.6500, 21.7770, 7.3210



61.9290, 34.2930, 11.7730



63.2160, 16.8270, -2.0930



35.7830, 2.1090, 0.3250



32.2590, 59.9670, 20.0550



72.2920, 135.4300, 45.6220

Inverse Universe

The Inverse Universe completely reimagines the original color for something new.



66.3500, -21.7770, -7.3210



83.4840, -34.0180, -11.2500



55.7840, -16.8270, 2.0930



36.8040, -2.3840, -0.8480



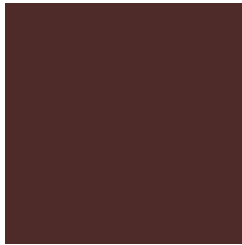
69.7410, -59.9670, -20.0550



157.7080, -135.4300, -45.6220

Previews

White Background



This preview shows how the YIQ color 52.6500, 21.7770, 7.3210 looks on a white background.

Color Contrast Check

Large Text (above 18pt) WCAG AA ✓ Pass

Any Text WCAG AA ✓ Pass

Large Text (above 18pt) WCAG AAA ✓ Pass

Any Text WCAG AAA ✓ Pass

Black Background



Color Contrast Check

Large Text (above 18pt) WCAG AA × Fail

Any Text WCAG AA × Fail

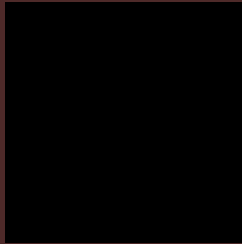
Large Text (above 18pt) WCAG AAA × Fail

Any Text WCAG AAA × Fail

If you want to check with other color combinations, try the [Color Contrast Checker](#).

YIQ 52.6500, 21.7770, 7.3210

Background



This preview shows how black text looks on a background with the YIQ color 52.6500, 21.7770, 7.3210.

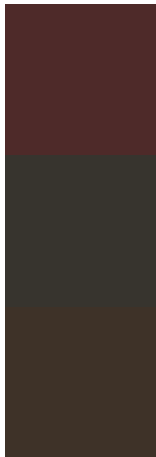


This preview shows how white text looks on a background with the YIQ color 52.6500, 21.7770,

Color Blindness Simulation

Color vision deficiency is a very complex topic, and I could not describe the different causes any better than Wikipedia does, so if you want to learn more, you should check out their [article about color blindness](#).

Dichromacy



Original Color

52.6500, 21.7770, 7.3210

Protanopia

52.2130, 3.7140, -1.2300

Deuteranopia

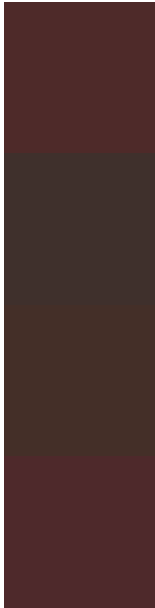
52.4480, 10.3620, -0.5660



Tritanopia

52.4050, 21.0890, 8.7770

Trichromacy



Original Color

52.6500, 21.7770, 7.3210

Protanomaly

52.0290, 10.2240, 1.9360

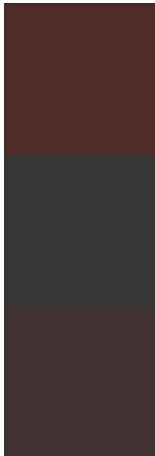
Deuteranomaly

52.4810, 14.7630, 2.2750

Tritanomaly

52.2910, 21.4100, 8.4660

Monochromacy



Original Color

52.6500, 21.7770, 7.3210

Achromatopsia

53.0000, -0.0000, -0.0000

Achromatomaly

52.8870, 7.7480, 2.7560

CSS Examples

Text

The CSS property to change the color of the text to YIQ 52.6500, 21.7770, 7.3210 is called "color". The color property can be set on classes, ids or directly on the HTML element.

This example shows how text in the color `rgb(78, 42, 41)` looks like.

```
.text, #text, p{  
    color:rgb(78, 42, 41)  
}
```

If you want to add a text shadow in that color use the text-shadow property, you can generate a text shadow directly with our [CSS Text Shadow Generator](#).

Here you see how black text with a 4 pixel rgb(78, 42, 41) colored shadow looks like.

```
.shadow{ text-shadow: 4px 4px 2px rgb(78, 42, 41) }
```

Border

The CSS property to change the border of an element to YIQ 52.6500, 21.7770, 7.3210 is called "border". The border property can be set on classes, ids or directly on the HTML element.

This example shows the color as border, it can be applied via the CSS property "border" or "border-color".

```
.border, #border, table{ border:4px solid rgb(78, 42, 41) }
```


If only the border color should be changed use the property `border-color`.

```
.border{ border-color:rgb(78, 42, 41) }
```

If you want to add a box shadow in that color use:

Here you see how a box with a 4 pixel `rgb(78, 42, 41)` colored shadow looks like.

```
.boxshadow{ -moz-box-shadow:4px 4px 4px  
4px rgb(78, 42, 41); -webkit-box-  
shadow:4px 4px 4px 4px rgb(78, 42, 41);  
box-shadow:4px 4px 4px 4px rgb(78, 42, 41)  
}
```

Background

The CSS property to change the background color of an element to YIQ 52.6500, 21.7770, 7.3210 is called "background". The background property can be set on classes, ids or directly on the HTML element.

```
.background, #background, body{  
background: rgb(78, 42, 41) }
```

If only the background color should be changed can be used:

```
.background{ background-color: rgb(78, 42,  
41) }
```

This example shows the color as background, it is applied via the CSS property "background".

To optimize and compress your CSS code, you can use our [online CSS compressor and optimizer](#) based on csstidy. If you want to create a linear or radial gradient as background or border, check our [CSS Gradient Generator](#).

Hey! You found this booklet interesting? Support Converting Colors with the new Membership Option!

The pro membership hides all ads, plus gives you double the colors in the color bucket, and more awesome pro features!

[Learn more, Memberships starting at \\$2.50/m!](#)

**Follow me
on Twitter!**

@ConvertingColor