

Converting Colors

YIQ(52.7900, 18.5670, 10.4310)

Have a look what the booklet for
YIQ(52.7900, 18.5670, 10.4310)
contains.

YIQ(52.7900, 18.5670, 10.4310)	3
<i>Conversions</i>	4
<i>Details</i>	6
<i>Harmonies</i>	12
<i>Previews</i>	24
<i>Color Blindness Simulation</i>	28
<i>CSS Examples</i>	31

Color

**YIQ(52.7900, 18.5670,
10.4310)**

Conversions

Conversions Part 1

Format	Color
Hex	4D2932
RGB	77, 41, 50
RGB Percent	30%, 16%, 20%
CMY	0.6979, 0.8393, 0.8039
CMYK	0.00, 0.47, 0.35, 0.70
HSL	345°, 31%, 23%
HSV	345°, 47%, 30%
XYZ	4.4310, 3.3940, 3.4411
YIQ	52.7900, 18.5670, 10.4310

Conversions

Conversions Part 2

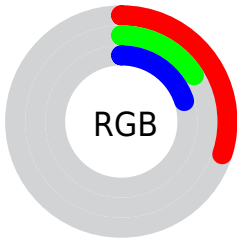
Format	Color
R_{YB}	77, 41, 50
Decimal	5056818
CIE Lab	21.56, 18.07, 1.52
CIE LCh	22, 18.130, 4.813
Yxy	3.3940, 0.3933, 0.3013
Android (android.graphics.Color)	4283246898 (0xFF4D2932)
YUV	52.7900, -1.3755, 21.2322
Hunter-Lab	18.4229, 10.6917, 1.8215

Details

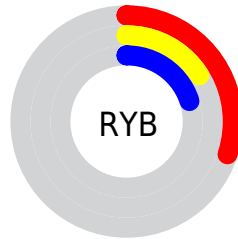
The YIQ color **52.7900, 18.5670, 10.4310** is a dark color, and the websafe version is hex **663333**. A complement of this color would be **65.2100, -18.5670, -10.4310**, and the grayscale version is **53.0000, -0.0000, -0.0000**.

A 20% lighter version of the original color is **99.9860, 20.9510, 11.2790**, and **10.8070, 19.8970, 8.3530** is the 20% darker color. If you saturate the color by 10%, you get **47.4100, 22.6930, 12.7490**, and if you desaturate by 10%, it is **58.1700, 14.4410, 8.1130**.

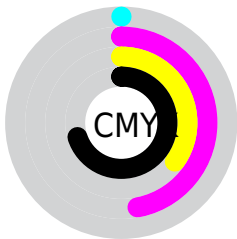
Distribution



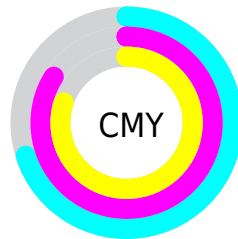
- Red (30%)
- Green (16%)
- Blue (20%)



- Red (30%)
- Yellow (16%)
- Blue (20%)



- Cyan (0%)
- Magenta (47%)
- Yellow (35%)
- Black (70%)



- Cyan (70%)
- Magenta (84%)
- Yellow (80%)

Brightness & Saturation Gradients

These gradients show how the YIQ color 52.7900, 18.5670, 10.4310 changes by changing the brightness by 10 percent. The first figure shows a shift by +10% for each color and the second figure -10%.

Similar to the brightness gradients but the following saturation gradients show a change of the YIQ color 52.7900, 18.5670, 10.4310 by changing the saturation by 10% instead.

■ 52.7900, 18.5670,
10.4310

■ 52.7900, 18.5670,
10.4310

■ 255.0000, -0.0000,
-0.0000

■ 30.8930, 16.7790,
9.7950

■ 99.9860, 20.9510,
11.2790

■ 10.8070, 19.8970,
8.3530

■ 125.5840, 22.1430,
11.7030

■ 0.0000, 0.0000,
0.0000

■ 151.2960, 23.0140,
12.4380

■ 178.4810, 23.9310,
12.3390

■ 205.7800, 24.5270,
12.5510

■ 230.9040, 18.2460,

10.7420

250.3040, 2.2000,
4.1840

52.7900, 18.5670,
10.4310

52.7900, 18.5670,
10.4310

47.4100, 22.6930,
12.7490

58.1700, 14.4410,
8.1130

42.6170, 26.5440,
14.5440

62.9630, 10.5900,
6.3180

37.3510, 30.3490,
17.1730

68.2290, 6.7850,
3.6890

31.9710, 34.4750,
19.4910

73.6090, 2.6590,
1.3710

26.5910, 38.6010,
21.8090

78.4020, -1.1920,
-0.4240

■ 25.1890, 39.7930,
22.2330

■ 83.7820, -5.3180,
-2.7420

■ 89.0480, -9.1230,
-5.3710

■ 94.4280, -13.2490,
-7.6890

■ 99.2210, -17.1000,
-9.4840

Harmonies

Analogous

The Analogous color harmony consists of three colors that are next to each other on the color wheel.



53.3530, 9.6720, 11.9440



52.7900, 18.5670, 10.4310



52.1830, 21.5940, 5.1300

Triad

The Triadic color harmony groups three colors that are evenly spaced from another and form a triangle on the color wheel.



52.7900, 18.5670, 10.4310



48.7470, 1.7900, -10.4180



43.3300, -36.2200, -4.3800

Complementary

The Complementary color scheme is a pair of colors which are on the opposite of each other on the color wheel.



52.7900, 18.5670, 10.4310



65.2100, -18.5670, -10.4310

Split Complementary

Split-complementary colors differ from the complementary color scheme. The scheme consists of three colors, the original color and two neighbors of the complement color.



41.6840, -37.4570, -9.4970



52.7900, 18.5670, 10.4310



46.6790, -12.6980, -12.1700

Square

The Square scheme is like the rectangle color scheme, but the four colors are evenly spaced on the color wheel.



52.7900, 18.5670, 10.4310



50.7160, 12.2430, -7.1250



42.1700, -30.2580, -13.3140



49.8810, -18.4780, 4.4820

Rectangle

The Rectangle color scheme consists of four colors that form a rectangle on the color wheel.



52.7900, 18.5670, 10.4310



51.3630, 20.9070, 1.0590



42.1700, -30.2580, -13.3140



41.7810, -39.1080, -7.1080

Sweetspot

The Sweet Spot groups the original color and five complimentary colors.



52.7900, 18.5670, 10.4310



90.2290, 6.7850, 3.6890



52.8780, 3.9400, 16.7080



45.0330, 4.4010, 2.8410



179.0000, -0.0000, -0.0000



51.0000, -0.0000, -0.0000

Same Dimension

The Same Dimension uses a secret algorithm to generate beautiful new colors.



52.7900, 18.5670, 10.4310



62.0410, 28.2860, 16.0140



56.4600, 19.2560, 3.4480



35.3100, 2.0630, 1.1590



33.4620, 52.4460, 29.7100



75.3820, 118.4620, 66.7980

Inverse Universe

The Inverse Universe completely reimagines the original color for something new.



52.7900, 18.5670, 10.4310



62.0410, 28.2860, 16.0140



61.5400, -19.2560, -3.4480



35.3100, 2.0630, 1.1590



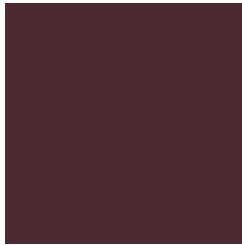
33.4620, 52.4460, 29.7100



75.3820, 118.4620, 66.7980

Previews

White Background



This preview shows how the YIQ color 52.7900, 18.5670, 10.4310 looks on a white background.

Color Contrast Check

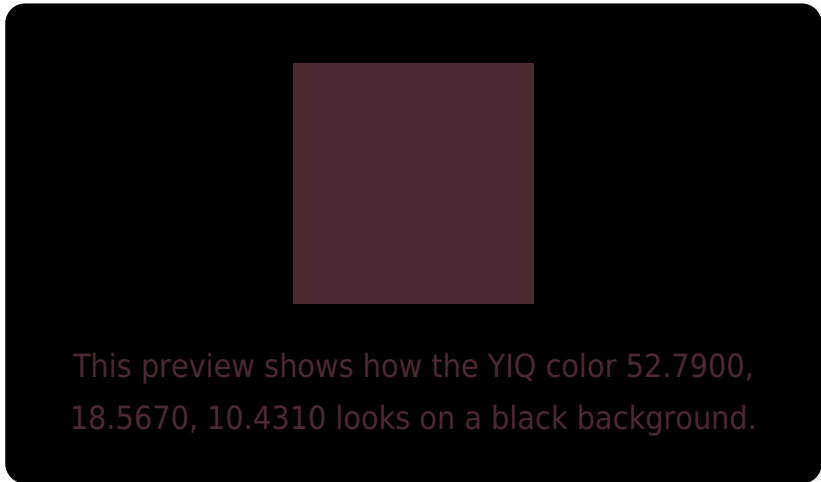
Large Text (above 18pt) WCAG AA ✓ Pass

Any Text WCAG AA ✓ Pass

Large Text (above 18pt) WCAG AAA ✓ Pass

Any Text WCAG AAA ✓ Pass

Black Background



Color Contrast Check

Large Text (above 18pt) WCAG AA × Fail

Any Text WCAG AA × Fail

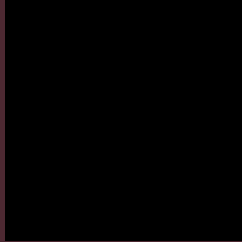
Large Text (above 18pt) WCAG AAA × Fail

Any Text WCAG AAA × Fail

If you want to check with other color combinations, try the [Color Contrast Checker](#).

YIQ 52.7900, 18.5670, 10.4310

Background



This preview shows how black text looks on a background with the YIQ color 52.7900, 18.5670, 10.4310.



This preview shows how white text looks on a background with the YIQ color 52.7900, 18.5670,

Color Blindness Simulation

Color vision deficiency is a very complex topic, and I could not describe the different causes any better than Wikipedia does, so if you want to learn more, you should check out their [article about color blindness](#).

Dichromacy



Original Color

52.7900, 18.5670, 10.4310

Protanopia

52.4560, -1.2840, 1.2440

Deuteranopia

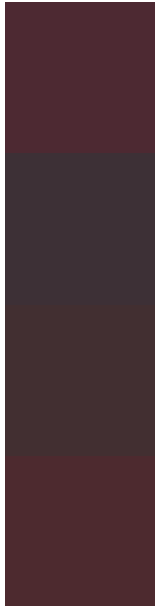
52.4630, 6.0060, 1.2860



Tritanopia

52.8070, 19.8970, 8.3530

Trichromacy



Original Color

52.7900, 18.5670, 10.4310

Protanomaly

52.5710, 5.8220, 4.6220

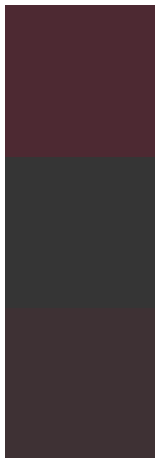
Deuteranomaly

52.9090, 10.6820, 4.6500

Tritanomaly

53.0350, 19.2550, 8.9750

Monochromacy



Original Color

52.7900, 18.5670, 10.4310

Achromatopsia

53.0000, -0.0000, -0.0000

Achromatomaly

53.2290, 6.7850, 3.6890

CSS Examples

Text

The CSS property to change the color of the text to YIQ 52.7900, 18.5670, 10.4310 is called "color". The color property can be set on classes, ids or directly on the HTML element.

This example shows how text in the color `rgb(77, 41, 50)` looks like.

```
.text, #text, p{  
    color:rgb(77, 41, 50)  
}
```

If you want to add a text shadow in that color use the text-shadow property, you can generate a text shadow directly with our [CSS Text Shadow Generator](#).

Here you see how black text with a 4 pixel rgb(77, 41, 50) colored shadow looks like.

```
.shadow{ text-shadow: 4px 4px 2px rgb(77, 41, 50) }
```

Border

The CSS property to change the border of an element to YIQ 52.7900, 18.5670, 10.4310 is called "border". The border property can be set on classes, ids or directly on the HTML element.

This example shows the color as border, it can be applied via the CSS property "border" or "border-color".

```
.border, #border, table{ border:4px solid rgb(77, 41, 50) }
```


If only the border color should be changed use the property `border-color`.

```
.border{ border-color:rgb(77, 41, 50) }
```

If you want to add a box shadow in that color use:

Here you see how a box with a 4 pixel `rgb(77, 41, 50)` colored shadow looks like.

```
.boxshadow{ -moz-box-shadow:4px 4px 4px  
4px rgb(77, 41, 50); -webkit-box-  
shadow:4px 4px 4px 4px rgb(77, 41, 50);  
box-shadow:4px 4px 4px 4px rgb(77, 41, 50)  
}
```

Background

The CSS property to change the background color of an element to YIQ 52.7900, 18.5670, 10.4310 is called "background". The background property can be set on classes, ids or directly on the HTML element.

```
.background, #background, body{  
background: rgb(77, 41, 50) }
```

If only the background color should be changed can be used:

```
.background{ background-color: rgb(77, 41,  
50) }
```

This example shows the color as background, it is applied via the CSS property "background".

To optimize and compress your CSS code, you can use our [online CSS compressor and optimizer](#) based on csstidy. If you want to create a linear or radial gradient as background or border, check our [CSS Gradient Generator](#).

Hey! You found this booklet interesting? Support Converting Colors with the new Membership Option!

The pro membership hides all ads, plus gives you double the colors in the color bucket, and more awesome pro features!

[Learn more, Memberships starting at \\$2.50/m!](#)

**Follow me
on Twitter!**

@ConvertingColor