

Converting Colors

YIQ(53.3930, 12.1950, 4.7630)

Have a look what the booklet for
YIQ(53.3930, 12.1950, 4.7630)
contains.

YIQ(53.3930, 12.1950, 4.7630)	3
<i>Conversions</i>	4
<i>Details</i>	6
<i>Harmonies</i>	12
<i>Previews</i>	24
<i>Color Blindness Simulation</i>	28
<i>CSS Examples</i>	31

Color

**YIQ(53.3930, 12.1950,
4.7630)**

Conversions

Conversions Part 1

Format	Color
Hex	442F30
RGB	68, 47, 48
RGB Percent	27%, 18%, 19%
CMY	0.7333, 0.8157, 0.8117
CMYK	0.00, 0.31, 0.29, 0.73
HSL	357°, 18%, 23%
HSV	357°, 31%, 27%
XYZ	3.9347, 3.4752, 3.2610
YIQ	53.3930, 12.1950, 4.7630

Conversions

Conversions Part 2

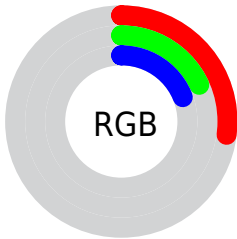
Format	Color
RYB	68, 47, 48
Decimal	4468528
CIELab	21.85, 9.80, 3.16
CIELCh	22, 10.296, 17.855
Yxy	3.4752, 0.3687, 0.3257
Android (android.graphics.Color)	4282658608 (0xFF442F30)
YUV	53.3930, -2.6587, 12.8103
Hunter-Lab	18.6420, 5.0520, 2.6778

Details

The YIQ color **53.3930, 12.1950, 4.7630** is a dark color, and the websafe version is hex **333333**. A complement of this color would be **61.6070, -12.1950, -4.7630**, and the grayscale version is **53.0000, -0.0000, -0.0000**.

A 20% lighter version of the original color is **100.2900, 13.9830, 5.3990**, and **8.0730, 16.0920, 5.7240** is the 20% darker color. If you saturate the color by 10%, you get **48.6000, 16.0460, 6.5580**, and if you desaturate by 10%, it is **58.1860, 8.3440, 2.9680**.

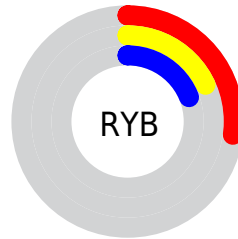
Distribution



Red (27%)

Green (18%)

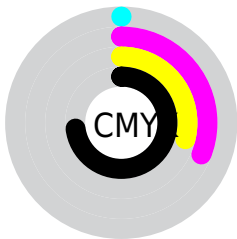
Blue (19%)



Red (27%)

Yellow (18%)

Blue (19%)

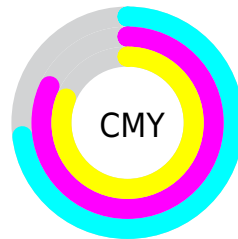


Cyan (0%)

Magenta (31%)

Yellow (29%)

Black (73%)



Cyan (73%)

Magenta (82%)

Yellow (81%)

Brightness & Saturation Gradients

These gradients show how the YIQ color 53.3930, 12.1950, 4.7630 changes by changing the brightness by 10 percent. The first figure shows a shift by +10% for each color and the second figure -10%.

Similar to the brightness gradients but the following saturation gradients show a change of the YIQ color 53.3930, 12.1950, 4.7630 by changing the saturation by 10% instead.

■ 53.3930, 12.1950,
4.7630

■ 53.3930, 12.1950,
4.7630

■ 255.0000, -0.0000,
-0.0000

■ 31.7950, 11.0030,
4.3390

■ 100.2900, 13.9830,
5.3990

■ 8.0730, 16.0920,
5.7240

■ 125.5890, 14.5790,
5.6110

■ 0.0000, 0.0000,
0.0000

■ 150.8880, 15.1750,
5.8230

■ 178.1870, 15.7710,
6.0350

■ 205.4860, 16.3670,
6.2470

■ 233.4860, 16.3670,

6.2470

254.4130, 0.2750,
0.5230

■ 53.3930, 12.1950,
4.7630

■ 53.3930, 12.1950,
4.7630

■ 48.6000, 16.0460,
6.5580

■ 58.1860, 8.3440,
2.9680

■ 43.6930, 20.2180,
8.0420

■ 63.0930, 4.1720,
1.4840

■ 39.4870, 23.7940,
9.3140

■ 67.2990, 0.5960,
0.2120

■ 34.5800, 27.9660,
10.7980

■ 72.2060, -3.5760,
-1.2720

■ 29.7870, 31.8170,
12.5930

■ 76.9990, -7.4270,
-3.0670

■ 24.8800, 35.9890,
14.0770

■ 81.9060, -11.5990,
-4.5510

■ 20.6740, 39.5650,
15.3490

■ 86.6990, -15.4500,
-6.3460

■ 91.0190, -19.3470,
-7.3070

■ 95.8120, -23.1980,
-9.1020

Harmonies

Analogous

The Analogous color harmony consists of three colors that are next to each other on the color wheel.



53.7070, 8.4350, 6.8270



53.3930, 12.1950, 4.7630



52.5840, 12.9750, 1.6390

Triad

The Triadic color harmony groups three colors that are evenly spaced from another and form a triangle on the color wheel.



53.3930, 12.1950, 4.7630



50.5280, -1.7870, -6.1630



50.9970, -13.1130, 0.8630

Complementary

The Complementary color scheme is a pair of colors which are on the opposite of each other on the color wheel.



53.3930, 12.1950, 4.7630



61.6070, -12.1950, -4.7630

Split Complementary

Split-complementary colors differ from the complementary color scheme. The scheme consists of three colors, the original color and two neighbors of the complement color.



49.6220, -16.5510, -2.9110



53.3930, 12.1950, 4.7630



49.2220, -9.6730, -6.4170

Square

The Square scheme is like the rectangle color scheme, but the four colors are evenly spaced on the color wheel.



53.3930, 12.1950, 4.7630



51.2900, 4.8150, -4.6650



49.2260, -15.4960, -5.5120



52.2260, -6.3280, 4.5520

Rectangle

The Rectangle color scheme consists of four colors that form a rectangle on the color wheel.



53.3930, 12.1950, 4.7630



52.5190, 11.6000, -0.9760



49.2260, -15.4960, -5.5120



50.5730, -14.8550, -0.6070

Sweetspot

The Sweet Spot groups the original color and five complimentary colors.



53.3930, 12.1950, 4.7630



83.5060, 4.4470, 2.0070



55.3740, 5.1790, 10.7710



42.4950, 2.9800, 1.0600



173.0000, -0.0000, 0.0000



46.0000, 0.0000, -0.0000

Same Dimension

The Same Dimension uses a secret algorithm to generate beautiful new colors.



53.3930, 12.1950, 4.7630



66.0950, 19.0260, 7.6180



58.5620, 10.0410, -0.2550



30.8970, 1.7880, 0.6360



29.5730, 56.2070, 22.1190



68.2300, 129.9730, 50.9090

Inverse Universe

The Inverse Universe completely reimagines the original color for something new.



53.3930, 12.1950, 4.7630



66.0950, 19.0260, 7.6180



56.4380, -10.0410, 0.2550



30.8970, 1.7880, 0.6360



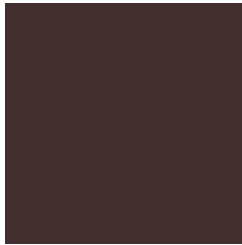
29.5730, 56.2070, 22.1190



68.2300, 129.9730, 50.9090

Previews

White Background



This preview shows how the YIQ color 53.3930, 12.1950, 4.7630 looks on a white background.

Color Contrast Check

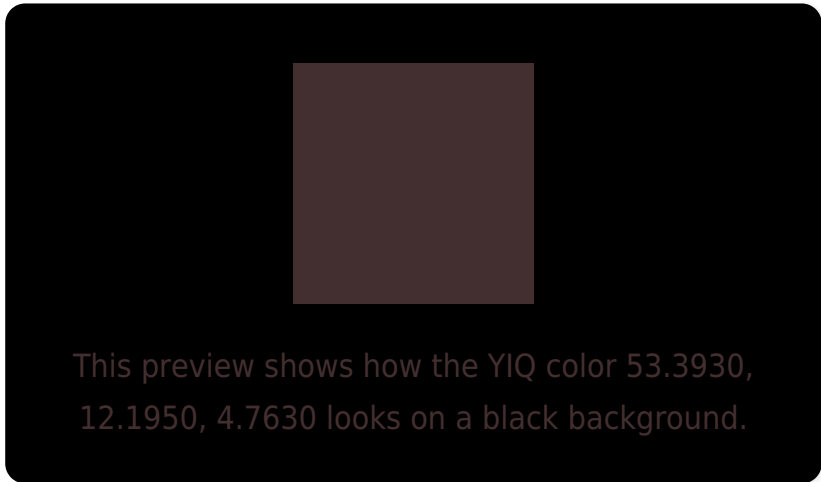
Large Text (above 18pt) WCAG AA ✓ Pass

Any Text WCAG AA ✓ Pass

Large Text (above 18pt) WCAG AAA ✓ Pass

Any Text WCAG AAA ✓ Pass

Black Background



Color Contrast Check

Large Text (above 18pt) WCAG AA × Fail

Any Text WCAG AA × Fail

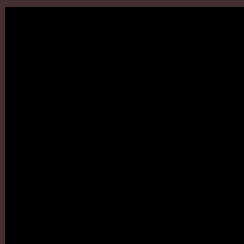
Large Text (above 18pt) WCAG AAA × Fail

Any Text WCAG AAA × Fail

If you want to check with other color combinations, try the [Color Contrast Checker](#).

YIQ 53.3930, 12.1950, 4.7630

Background



This preview shows how black text looks on a background with the YIQ color 53.3930, 12.1950, 4.7630.



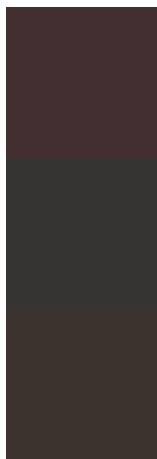
This preview shows how white text looks on a background with the YIQ color 53.3930, 12.1950,

4.7630.

Color Blindness Simulation

Color vision deficiency is a very complex topic, and I could not describe the different causes any better than Wikipedia does, so if you want to learn more, you should check out their [article about color blindness](#).

Dichromacy



Original Color

53.3930, 12.1950, 4.7630

Protanopia

52.4840, 1.5130, 0.1130

Deuteranopia

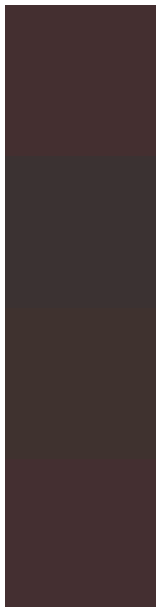
53.2350, 6.6480, 0.6640



Tritanopia

53.6210, 11.5530, 5.3850

Trichromacy



Original Color

53.3930, 12.1950, 4.7630

Protanomaly

52.6910, 5.3640, 1.9080

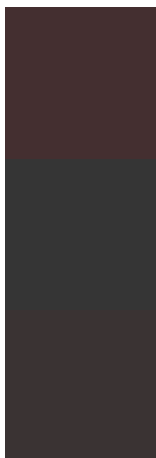
Deuteranomaly

53.5450, 8.7110, 1.8230

Tritanomaly

53.5070, 11.8740, 5.0740

Monochromacy



Original Color

53.3930, 12.1950, 4.7630

Achromatopsia

53.0000, -0.0000, -0.0000

Achromatomaly

53.0930, 4.1720, 1.4840

CSS Examples

Text

The CSS property to change the color of the text to YIQ 53.3930, 12.1950, 4.7630 is called "color". The color property can be set on classes, ids or directly on the HTML element.

This example shows how text in the color `rgb(68, 47, 48)` looks like.

```
.text, #text, p{  
    color:rgb(68, 47, 48)  
}
```

If you want to add a text shadow in that color use the text-shadow property, you can generate a text shadow directly with our [CSS Text Shadow Generator](#).

Here you see how black text with a 4 pixel rgb(68, 47, 48) colored shadow looks like.

```
.shadow{ text-shadow: 4px 4px 2px rgb(68, 47, 48) }
```

Border

The CSS property to change the border of an element to YIQ 53.3930, 12.1950, 4.7630 is called "border". The border property can be set on classes, ids or directly on the HTML element.

This example shows the color as border, it can be applied via the CSS property "border" or "border-color".

```
.border, #border, table{ border:4px solid rgb(68, 47, 48) }
```


If only the border color should be changed use the property border-color.

```
.border{ border-color:rgb(68, 47, 48) }
```

If you want to add a box shadow in that color use:

Here you see how a box with a 4 pixel rgb(68, 47, 48) colored shadow looks like.

```
.boxshadow{ -moz-box-shadow:4px 4px 4px  
4px rgb(68, 47, 48); -webkit-box-  
shadow:4px 4px 4px 4px rgb(68, 47, 48);  
box-shadow:4px 4px 4px 4px rgb(68, 47, 48)  
}
```

Background

The CSS property to change the background color of an element to YIQ 53.3930, 12.1950, 4.7630 is called "background". The background property can be set on classes, ids or directly on the HTML element.

```
.background, #background, body{  
background: rgb(68, 47, 48) }
```

If only the background color should be changed can be used:

```
.background{ background-color: rgb(68, 47,  
48) }
```

This example shows the color as background, it is applied via the CSS property "background".

To optimize and compress your CSS code, you can use our [online CSS compressor and optimizer](#) based on csstidy. If you want to create a linear or radial gradient as background or border, check our [CSS Gradient Generator](#).

Hey! You found this booklet interesting? Support Converting Colors with the new Membership Option!

The pro membership hides all ads, plus gives you double the colors in the color bucket, and more awesome pro features!

[Learn more, Memberships starting at \\$2.50/m!](#)

**Follow me
on Twitter!**

@ConvertingColor