

Converting Colors

YIQ(53.7580, 12.4250, 0.5930)

Have a look what the booklet for
YIQ(53.7580, 12.4250, 0.5930)
contains.

YIQ(53.7580, 12.4250, 0.5930)	3
<i>Conversions</i>	4
<i>Details</i>	6
<i>Harmonies</i>	12
<i>Previews</i>	24
<i>Color Blindness Simulation</i>	28
<i>CSS Examples</i>	31

Color

**YIQ(53.7580, 12.4250,
0.5930)**

Conversions

Conversions Part 1

Format	Color
Hex	423229
RGB	66, 50, 41
RGB Percent	26%, 20%, 16%
CMY	0.7411, 0.8039, 0.8392
CMYK	0.00, 0.24, 0.38, 0.74
HSL	22°, 23%, 21%
HSV	22°, 38%, 26%
XYZ	3.7881, 3.5994, 2.5942
YIQ	53.7580, 12.4250, 0.5930

Conversions

Conversions Part 2

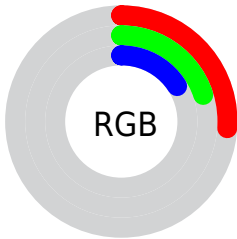
Format	Color
R_{YB}	66, 55, 41
Decimal	4338217
CIE Lab	22.30, 5.70, 8.48
CIE LCh	22, 10.224, 56.085
Yxy	3.5994, 0.3795, 0.3606
Android (android.graphics.Color)	4282528297 (0xFF423229)
YUV	53.7580, -6.2897, 10.7362
Hunter-Lab	18.9720, 2.4400, 5.1731

Details

The YIQ color **53.7580, 12.4250, 0.5930** is a dark color, and the websafe version is hex **333333**. A complement of this color would be **53.2420, -12.4250, -0.5930**, and the grayscale version is **54.0000, -0.0000, 0.0000**.

A 20% lighter version of the original color is **100.5410, 14.5340, 0.9180**, and **9.2250, 12.6080, 2.7840** is the 20% darker color. If you saturate the color by 10%, you get **50.6120, 15.7720, 0.5080**, and if you desaturate by 10%, it is **56.9040, 9.0780, 0.6780**.

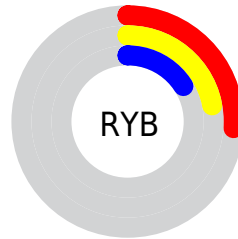
Distribution



Red (26%)

Green (20%)

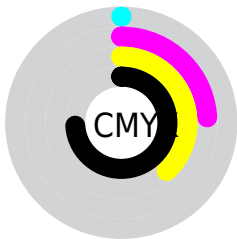
Blue (16%)



Red (26%)

Yellow (22%)

Blue (16%)

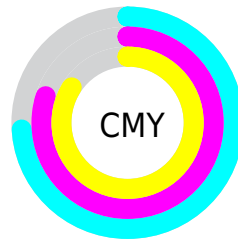


Cyan (0%)

Magenta (24%)

Yellow (38%)

Black (74%)



Cyan (74%)

Magenta (80%)

Yellow (84%)

Brightness & Saturation Gradients

These gradients show how the YIQ color 53.7580, 12.4250, 0.5930 changes by changing the brightness by 10 percent. The first figure shows a shift by +10% for each color and the second figure -10%.

Similar to the brightness gradients but the following saturation gradients show a change of the YIQ color 53.7580, 12.4250, 0.5930 by changing the saturation by 10% instead.

■ 53.7580, 12.4250,
0.5930

■ 53.7580, 12.4250,
0.5930

255.0000, -0.0000,
-0.0000

■ 32.2740, 10.9120,
0.4800

■ 100.5410, 14.5340,
0.9180

■ 9.2250, 12.6080,
2.7840

■ 125.5410, 14.5340,
0.9180

■ 0.0000, 0.0000,
0.0000

■ 151.7260, 15.4510,
0.8190

■ 178.0250, 16.0470,
1.0310

■ 205.9110, 16.3680,
0.7200

■ 234.2100, 16.9640,

0.9320

253.8600, 3.2100,
-3.1100

53.7580, 12.4250,
0.5930

53.7580, 12.4250,
0.5930

50.6120, 15.7720,
0.5080

56.9040, 9.0780,
0.6780

47.5800, 18.7980,
0.7340

59.9360, 6.0520,
0.4520

43.8470, 22.4200,
1.1720

63.6690, 2.4300,
0.0140

40.8150, 25.4460,
1.3980

66.7010, -0.5960,
-0.2120

37.6690, 28.7930,
1.3130

69.8470, -3.9430,
-0.1270

■ 34.5230, 32.1400,
1.2280

■ 72.9930, -7.2900,
-0.0420

■ 33.8220, 32.7360,
1.4400

■ 76.6120, -10.5910,
-0.7910

■ 79.7580, -13.9380,
-0.7060

■ 82.7900, -16.9640,
-0.9320

Harmonies

Analogous

The Analogous color harmony consists of three colors that are next to each other on the color wheel.



54.1650, 12.8370, 4.1410



53.7580, 12.4250, 0.5930



52.7960, 9.2620, -2.6580

Triad

The Triadic color harmony groups three colors that are evenly spaced from another and form a triangle on the color wheel.



53.7580, 12.4250, 0.5930



50.7380, -11.1860, -6.5300



54.0090, -4.2190, 4.8770

Complementary

The Complementary color scheme is a pair of colors which are on the opposite of each other on the color wheel.



53.7580, 12.4250, 0.5930



53.2420, -12.4250, -0.5930

Split Complementary

Split-complementary colors differ from the complementary color scheme. The scheme consists of three colors, the original color and two neighbors of the complement color.



52.3070, -11.0500, 2.0220



53.7580, 12.4250, 0.5930



49.8670, -15.8630, -4.3670

Square

The Square scheme is like the rectangle color scheme, but the four colors are evenly spaced on the color wheel.



53.7580, 12.4250, 0.5930



51.4460, -4.4920, -6.7000



50.5620, -16.3220, -1.5540



54.3690, 3.5750, 6.7990

Rectangle

The Rectangle color scheme consists of four colors that form a rectangle on the color wheel.



53.7580, 12.4250, 0.5930



52.5890, 5.4110, -4.4530



50.5620, -16.3220, -1.5540



53.8130, -6.6030, 4.0290

Sweetspot

The Sweet Spot groups the original color and five complimentary colors.



53.7580, 12.4250, 0.5930



82.3380, 4.8600, 0.0280



50.2990, 9.7640, 10.2760



40.6690, 2.4300, 0.0140



171.0000, -0.0000, -0.0000



43.0000, -0.0000, -0.0000

Same Dimension

The Same Dimension uses a secret algorithm to generate beautiful new colors.



53.7580, 12.4250, 0.5930



67.8790, 19.3940, 0.9460



60.8020, 9.1250, -5.6830



31.4840, 1.5130, 0.1130



49.5480, 48.1870, 2.2590



114.5230, 111.2290, 5.1250

Inverse Universe

The Inverse Universe completely reimagines the original color for something new.



53.2420, -12.4250, -0.5930



67.1210, -19.3940, -0.9460



46.1980, -9.1250, 5.6830



31.5160, -1.5130, -0.1130



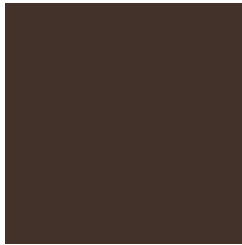
47.4520, -48.1870, -2.2590



110.0640, -111.5040, -5.6480

Previews

White Background



This preview shows how the YIQ color 53.7580, 12.4250, 0.5930 looks on a white background.

Color Contrast Check

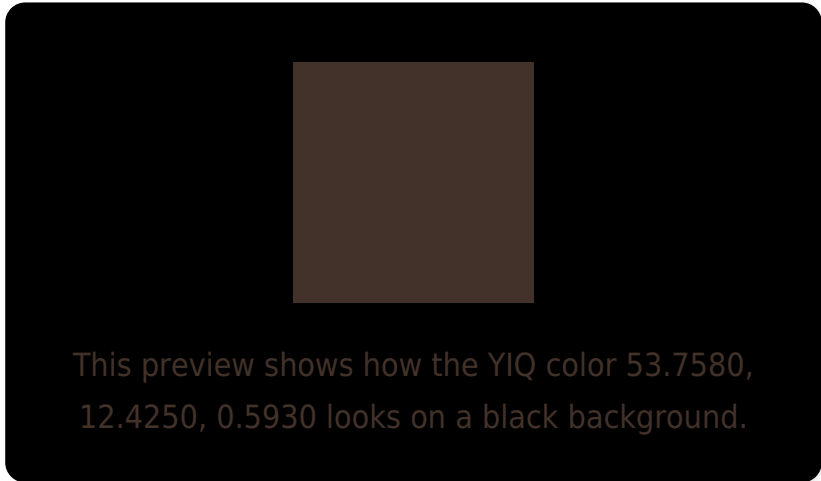
Large Text (above 18pt) WCAG AA ✓ Pass

Any Text WCAG AA ✓ Pass

Large Text (above 18pt) WCAG AAA ✓ Pass

Any Text WCAG AAA ✓ Pass

Black Background



Color Contrast Check

Large Text (above 18pt) WCAG AA × Fail

Any Text WCAG AA × Fail

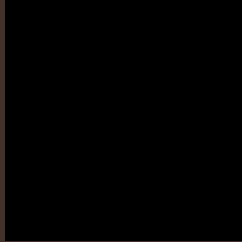
Large Text (above 18pt) WCAG AAA × Fail

Any Text WCAG AAA × Fail

If you want to check with other color combinations, try the [Color Contrast Checker](#).

YIQ 53.7580, 12.4250, 0.5930

Background



This preview shows how black text looks on a background with the YIQ color 53.7580, 12.4250, 0.5930.



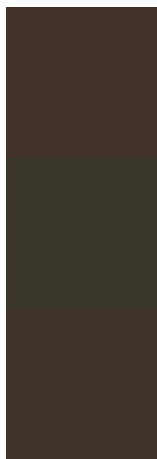
This preview shows how white text looks on a background with the YIQ color 53.7580, 12.4250,

0.5930.

Color Blindness Simulation

Color vision deficiency is a very complex topic, and I could not describe the different causes any better than Wikipedia does, so if you want to learn more, you should check out their [article about color blindness](#).

Dichromacy



Original Color

53.7580, 12.4250, 0.5930

Protanopia

53.0560, 5.5940, -2.2620

Deuteranopia

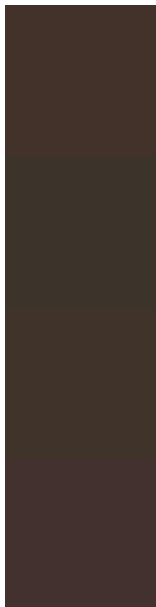
53.4480, 10.3620, -0.5660



Tritanopia

54.1370, 10.0400, 5.2720

Trichromacy



Original Color

53.7580, 12.4250, 0.5930

Protanomaly

53.2520, 7.9780, -1.4140

Deuteranomaly

53.7470, 10.9580, -0.3540

Tritanomaly

54.2680, 11.0490, 3.5050

Monochromacy



Original Color

53.7580, 12.4250, 0.5930

Achromatopsia

54.0000, -0.0000, 0.0000

Achromatomaly

54.0390, 4.2640, -0.1840

CSS Examples

Text

The CSS property to change the color of the text to YIQ 53.7580, 12.4250, 0.5930 is called "color". The color property can be set on classes, ids or directly on the HTML element.

This example shows how text in the color `rgb(66, 50, 41)` looks like.

```
.text, #text, p{  
    color:rgb(66, 50, 41)  
}
```

If you want to add a text shadow in that color use the text-shadow property, you can generate a text shadow directly with our [CSS Text Shadow Generator](#).

Here you see how black text with a 4 pixel rgb(66, 50, 41) colored shadow looks like.

```
.shadow{ text-shadow: 4px 4px 2px rgb(66, 50, 41) }
```

Border

The CSS property to change the border of an element to YIQ 53.7580, 12.4250, 0.5930 is called "border". The border property can be set on classes, ids or directly on the HTML element.

This example shows the color as border, it can be applied via the CSS property "border" or "border-color".

```
.border, #border, table{ border:4px solid rgb(66, 50, 41) }
```


If only the border color should be changed use the property `border-color`.

```
.border{ border-color:rgb(66, 50, 41) }
```

If you want to add a box shadow in that color use:

Here you see how a box with a 4 pixel `rgb(66, 50, 41)` colored shadow looks like.

```
.boxshadow{ -moz-box-shadow:4px 4px 4px  
4px rgb(66, 50, 41); -webkit-box-  
shadow:4px 4px 4px 4px rgb(66, 50, 41);  
box-shadow:4px 4px 4px 4px rgb(66, 50, 41)  
}
```

Background

The CSS property to change the background color of an element to YIQ 53.7580, 12.4250, 0.5930 is called "background". The background property can be set on classes, ids or directly on the HTML element.

```
.background, #background, body{  
background: rgb(66, 50, 41) }
```

If only the background color should be changed can be used:

```
.background{ background-color: rgb(66, 50,  
41) }
```

This example shows the color as background, it is applied via the CSS property "background".

To optimize and compress your CSS code, you can use our [online CSS compressor and optimizer](#) based on csstidy. If you want to create a linear or radial gradient as background or border, check our [CSS Gradient Generator](#).

Hey! You found this booklet interesting? Support Converting Colors with the new Membership Option!

The pro membership hides all ads, plus gives you double the colors in the color bucket, and more awesome pro features!

[Learn more, Memberships starting at \\$2.50/m!](#)

**Follow me
on Twitter!**

@ConvertingColor