

Converting Colors

YIQ(54.5460, 16.1380, 4.8900)

Have a look what the booklet for
YIQ(54.5460, 16.1380, 4.8900)
contains.

YIQ(54.5460, 16.1380, 4.8900)	3
<i>Conversions</i>	4
<i>Details</i>	6
<i>Harmonies</i>	12
<i>Previews</i>	24
<i>Color Blindness Simulation</i>	28
<i>CSS Examples</i>	31

Color

**YIQ(54.5460, 16.1380,
4.8900)**

Conversions

Conversions Part 1

Format	Color
Hex	492F2D
RGB	73, 47, 45
RGB Percent	29%, 18%, 18%
CMY	0.7137, 0.8157, 0.8235
CMYK	0.00, 0.36, 0.38, 0.71
HSL	4°, 24%, 23%
HSV	4°, 38%, 29%
XYZ	4.2389, 3.6388, 2.9633
YIQ	54.5460, 16.1380, 4.8900

Conversions

Conversions Part 2

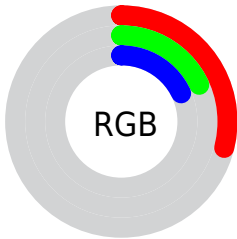
Format	Color
RYB	73, 47, 45
Decimal	4796205
CIELab	22.44, 11.63, 6.12
CIElCh	22, 13.136, 27.749
Yxy	3.6388, 0.3910, 0.3357
Android (android.graphics.Color)	4282986285 (0xFF492F2D)
YUV	54.5460, -4.7062, 16.1842
Hunter-Lab	19.0757, 6.2827, 4.1427

Details

The YIQ color **54.5460, 16.1380, 4.8900** is a dark color, and the websafe version is hex **663333**. A complement of this color would be **63.4540, -16.1380, -4.8900**, and the grayscale version is **55.0000, 0.0000, 0.0000**.

A 20% lighter version of the original color is **101.7420, 18.5220, 5.7380**, and **9.2690, 18.4760, 6.5720** is the 20% darker color. If you saturate the color by 10%, you get **49.6390, 20.3100, 6.3740**, and if you desaturate by 10%, it is **59.4530, 11.9660, 3.4060**.

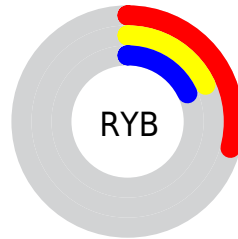
Distribution



Red (29%)

Green (18%)

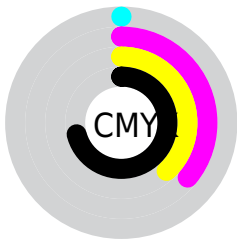
Blue (18%)



Red (29%)

Yellow (18%)

Blue (18%)

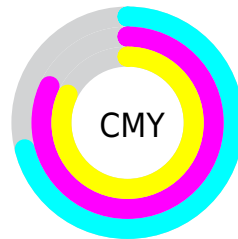


Cyan (0%)

Magenta (36%)

Yellow (38%)

Black (71%)



Cyan (71%)

Magenta (82%)

Yellow (82%)

Brightness & Saturation Gradients

These gradients show how the YIQ color 54.5460, 16.1380, 4.8900 changes by changing the brightness by 10 percent. The first figure shows a shift by +10% for each color and the second figure -10%.

Similar to the brightness gradients but the following saturation gradients show a change of the YIQ color 54.5460, 16.1380, 4.8900 by changing the saturation by 10% instead.

■ 54.5460, 16.1380,
4.8900

■ 54.5460, 16.1380,
4.8900

■ 255.0000, -0.0000,
-0.0000

■ 32.9480, 14.9460,
4.4660

■ 101.7420, 18.5220,
5.7380

■ 9.2690, 18.4760,
6.5720

■ 126.9270, 19.4390,
5.6390

■ 0.0000, 0.0000,
0.0000

■ 153.2260, 20.0350,
5.8510

■ 179.5250, 20.6310,
6.0630

■ 207.1230, 21.8230,
6.4870

■ 233.6280, 18.8430,

5.4270

253.9570, 1.5590,
-0.7210

■ 54.5460, 16.1380,
4.8900

■ 54.5460, 16.1380,
4.8900

■ 49.6390, 20.3100,
6.3740

■ 59.4530, 11.9660,
3.4060

■ 44.6180, 24.8030,
7.5470

■ 64.4740, 7.4730,
2.2330

■ 40.2980, 28.7000,
8.5080

■ 68.7940, 3.5760,
1.2720

■ 35.3910, 32.8720,
9.9920

■ 73.7010, -0.5960,
-0.2120

■ 30.4840, 37.0440,
11.4760

■ 78.7220, -5.0890,
-1.3850

■ 25.4630, 41.5370,
12.6490

■ 83.6290, -9.2610,
-2.8690

■ 24.7620, 42.1330,
12.8610

■ 87.9490, -13.1580,
-3.8300

■ 92.8560, -17.3300,
-5.3140

■ 97.8770, -21.8230,
-6.4870

Harmonies

Analogous

The Analogous color harmony consists of three colors that are next to each other on the color wheel.



54.8000, 12.6070, 8.3110



54.5460, 16.1380, 4.8900



53.6120, 15.7720, 0.5080

Triad

The Triadic color harmony groups three colors that are evenly spaced from another and form a triangle on the color wheel.



54.5460, 16.1380, 4.8900



50.9080, -5.9130, -8.4810



52.5670, -14.7180, 2.4180

Complementary

The Complementary color scheme is a pair of colors which are on the opposite of each other on the color wheel.



54.5460, 16.1380, 4.8900



63.4540, -16.1380, -4.8900

Split Complementary

Split-complementary colors differ from the complementary color scheme. The scheme consists of three colors, the original color and two neighbors of the complement color.



49.5120, -22.0530, -2.3170



54.5460, 16.1380, 4.8900



49.3460, -15.9540, -8.2260

Square

The Square scheme is like the rectangle color scheme, but the four colors are evenly spaced on the color wheel.



54.5460, 16.1380, 4.8900



52.2250, 3.4400, -7.2800



48.5780, -22.4190, -6.6990



54.1770, -4.6320, 6.8560

Rectangle

The Rectangle color scheme consists of four colors that form a rectangle on the color wheel.



54.5460, 16.1380, 4.8900



53.6500, 12.6090, -2.7430



48.5780, -22.4190, -6.6990



51.5450, -17.6520, 0.5240

Sweetspot

The Sweet Spot groups the original color and five complimentary colors.



54.5460, 16.1380, 4.8900



86.8760, 6.2810, 1.8090



56.3360, 8.3420, 14.0220



43.7940, 3.5760, 1.2720



176.0000, -0.0000, -0.0000



48.0000, -0.0000, 0.0000

Same Dimension

The Same Dimension uses a secret algorithm to generate beautiful new colors.



54.5460, 16.1380, 4.8900



65.6180, 24.8030, 7.5470



62.7640, 12.2880, -2.4320



33.1960, 2.3840, 0.8480



33.7100, 57.0790, 17.3270



77.2650, 130.8920, 39.7560

Inverse Universe

The Inverse Universe completely reimagines the original color for something new.



63.4540, -16.1380, -4.8900



79.3820, -24.8030, -7.5470



55.2360, -12.2880, 2.4320



34.2170, -2.1090, -0.3250



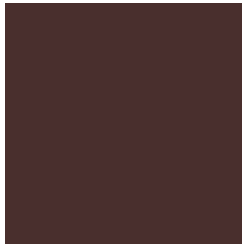
65.2900, -57.0790, -17.3270



149.7350, -130.8920, -39.7560

Previews

White Background



This preview shows how the YIQ color 54.5460, 16.1380, 4.8900 looks on a white background.

Color Contrast Check

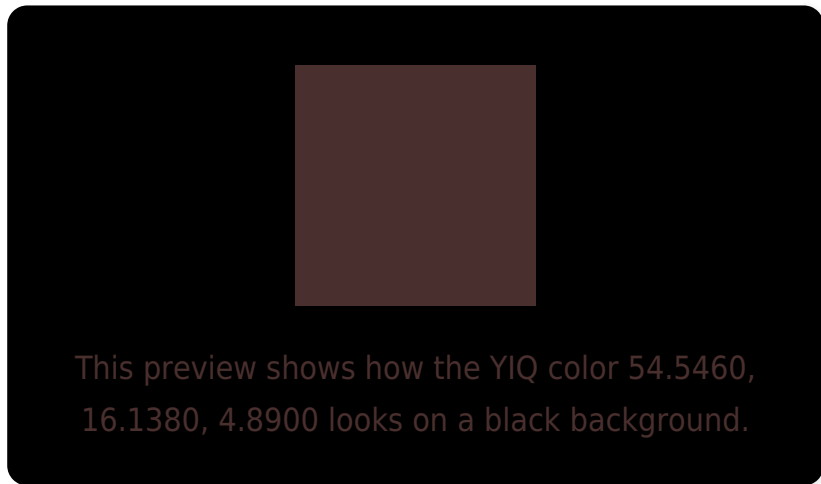
Large Text (above 18pt) WCAG AA ✓ Pass

Any Text WCAG AA ✓ Pass

Large Text (above 18pt) WCAG AAA ✓ Pass

Any Text WCAG AAA ✓ Pass

Black Background



Color Contrast Check

Large Text (above 18pt) WCAG AA × Fail

Any Text WCAG AA × Fail

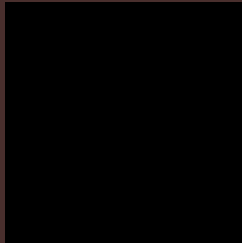
Large Text (above 18pt) WCAG AAA × Fail

Any Text WCAG AAA × Fail

If you want to check with other color combinations, try the [Color Contrast Checker](#).

YIQ 54.5460, 16.1380, 4.8900

Background



This preview shows how black text looks on a background with the YIQ color 54.5460, 16.1380, 4.8900.



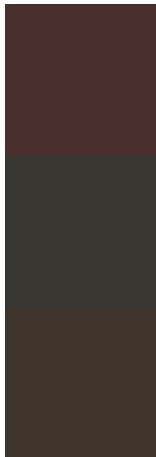
This preview shows how white text looks on a background with the YIQ color 54.5460, 16.1380,

4.8900.

Color Blindness Simulation

Color vision deficiency is a very complex topic, and I could not describe the different causes any better than Wikipedia does, so if you want to learn more, you should check out their [article about color blindness](#).

Dichromacy



Original Color

54.5460, 16.1380, 4.8900

Protanopia

53.9140, 3.1180, -1.4420

Deuteranopia

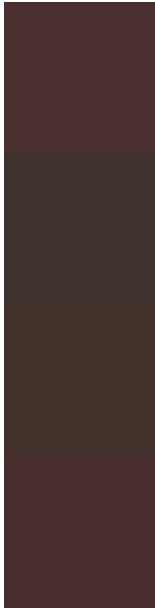
54.3770, 9.1240, -0.1560



Tritanopia

54.5290, 14.8080, 6.9680

Trichromacy



Original Color

54.5460, 16.1380, 4.8900

Protanomaly

53.8330, 7.8400, 1.0880

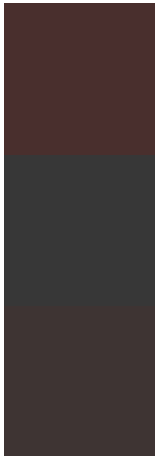
Deuteranomaly

54.3990, 12.0580, 1.7380

Tritanomaly

54.3010, 15.4500, 6.3460

Monochromacy



Original Color

54.5460, 16.1380, 4.8900

Achromatopsia

55.0000, 0.0000, 0.0000

Achromatomaly

54.8760, 6.2810, 1.8090

CSS Examples

Text

The CSS property to change the color of the text to YIQ 54.5460, 16.1380, 4.8900 is called "color". The color property can be set on classes, ids or directly on the HTML element.

This example shows how text in the color `rgb(73, 47, 45)` looks like.

```
.text, #text, p{  
    color:rgb(73, 47, 45)  
}
```

If you want to add a text shadow in that color use the text-shadow property, you can generate a text shadow directly with our [CSS Text Shadow Generator](#).

Here you see how black text with a 4 pixel rgb(73, 47, 45) colored shadow looks like.

```
.shadow{ text-shadow: 4px 4px 2px rgb(73, 47, 45) }
```

Border

The CSS property to change the border of an element to YIQ 54.5460, 16.1380, 4.8900 is called "border". The border property can be set on classes, ids or directly on the HTML element.

This example shows the color as border, it can be applied via the CSS property "border" or "border-color".

```
.border, #border, table{ border:4px solid rgb(73, 47, 45) }
```


If only the border color should be changed use the property border-color.

```
.border{ border-color:rgb(73, 47, 45) }
```

If you want to add a box shadow in that color use:

Here you see how a box with a 4 pixel rgb(73, 47, 45) colored shadow looks like.

```
.boxshadow{ -moz-box-shadow:4px 4px 4px  
4px rgb(73, 47, 45); -webkit-box-  
shadow:4px 4px 4px 4px rgb(73, 47, 45);  
box-shadow:4px 4px 4px 4px rgb(73, 47, 45)  
}
```

Background

The CSS property to change the background color of an element to YIQ 54.5460, 16.1380, 4.8900 is called "background". The background property can be set on classes, ids or directly on the HTML element.

```
.background, #background, body{  
background: rgb(73, 47, 45) }
```

If only the background color should be changed can be used:

```
.background{ background-color: rgb(73, 47,  
45) }
```

This example shows the color as background, it is applied via the CSS property "background".

To optimize and compress your CSS code, you can use our [online CSS compressor and optimizer](#) based on csstidy. If you want to create a linear or radial gradient as background or border, check our [CSS Gradient Generator](#).

Hey! You found this booklet interesting? Support Converting Colors with the new Membership Option!

The pro membership hides all ads, plus gives you double the colors in the color bucket, and more awesome pro features!

[Learn more, Memberships starting at \\$2.50/m!](#)

**Follow me
on Twitter!**

@ConvertingColor