

# Converting Colors

YIQ(55.2800, 10.7750, -2.5450)

Have a look what the booklet for  
YIQ(55.2800, 10.7750, -2.5450)  
contains.

<b>YIQ(55.2800, 10.7750, -2.5450)</b> .....	3
<b><i>Conversions</i></b> .....	4
<b><i>Details</i></b> .....	6
<b><i>Harmonies</i></b> .....	12
<b><i>Previews</i></b> .....	24
<b><i>Color Blindness Simulation</i></b> .....	28
<b><i>CSS Examples</i></b> .....	31

# Color

**YIQ(55.2800, 10.7750,  
-2.5450)**

# Conversions

## Conversions Part 1

Format	Color
Hex	403627
RGB	64, 54, 39
RGB Percent	25%, 21%, 15%
CMY	0.7490, 0.7882, 0.8470
CMYK	0.00, 0.16, 0.39, 0.75
HSL	36°, 24%, 20%
HSV	36°, 39%, 25%
XYZ	3.8000, 3.8746, 2.4683
YIQ	55.2800, 10.7750, -2.5450

# Conversions

## Conversions Part 2

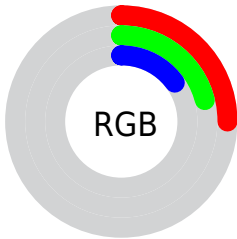
<b>Format</b>	<b>Color</b>
<b>RYB</b>	56, 64, 39
Decimal	4208167
CIELab	23.25, 1.78, 11.07
CIELCh	23, 11.215, 80.882
Yxy	3.8746, 0.3746, 0.3820
Android (android.graphics.Color)	4282398247 (0xFF403627)
YUV	55.2800, -8.0260, 7.6474
Hunter-Lab	19.6841, 0.0122, 6.3443

# Details

The YIQ color **55.2800, 10.7750, -2.5450** is a dark color, and the websafe version is hex **333333**. A complement of this color would be **47.7200, -10.7750, 2.5450**, and the grayscale version is **55.0000, 0.0000, 0.0000**.

A 20% lighter version of the original color is **102.3510, 12.0130, -2.9550**, and **11.8500, 9.1700, -0.9900** is the 20% darker color. If you saturate the color by 10%, you get **52.8350, 13.5260, -2.8420**, and if you desaturate by 10%, it is **57.7250, 8.0240, -2.2480**.

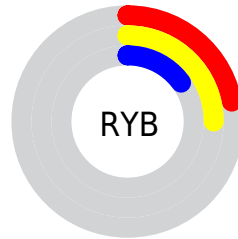
# Distribution



Red (25%)

Green (21%)

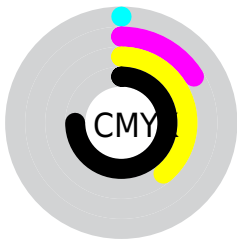
Blue (15%)



Red (22%)

Yellow (25%)

Blue (15%)

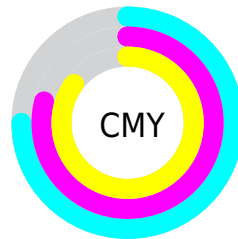


Cyan (0%)

Magenta (16%)

Yellow (39%)

Black (75%)



Cyan (75%)

Magenta (79%)

Yellow (85%)

# Brightness & Saturation Gradients

These gradients show how the YIQ color 55.2800, 10.7750, -2.5450 changes by changing the brightness by 10 percent. The first figure shows a shift by +10% for each color and the second figure -10%.

Similar to the brightness gradients but the following saturation gradients show a change of the YIQ color 55.2800, 10.7750, -2.5450 by changing the saturation by 10% instead.



■ 55.2800, 10.7750,  
-2.5450

■ 55.2800, 10.7750,  
-2.5450

■ 255.0000, -0.0000,  
-0.0000

■ 34.0950, 9.8580,  
-2.4460

■ 102.3510, 12.0130,  
-2.9550

■ 11.8500, 9.1700,  
-0.9900

■ 126.9490, 13.2050,  
-2.5310

■ 0.0000, 0.0000,  
0.0000

■ 152.9490, 13.2050,  
-2.5310

■ 180.1340, 14.1220,  
-2.6300

■ 208.0200, 14.4430,  
-2.9410

■ 236.0200, 14.4430,

-2.9410

■ 253.6320, 3.8520,  
-3.7320

■ 55.2800, 10.7750,  
-2.5450

■ 55.2800, 10.7750,  
-2.5450

■ 52.8350, 13.5260,  
-2.8420

■ 57.7250, 8.0240,  
-2.2480

■ 50.8630, 16.3230,  
-3.9730

■ 59.6970, 5.2270,  
-1.1170

■ 48.4180, 19.0740,  
-4.2700

■ 62.1420, 2.4760,  
-0.8200

■ 46.4460, 21.8710,  
-5.4010

■ 64.1140, -0.3210,  
0.3110

■ 44.0010, 24.6220,  
-5.6980

■ 66.5590, -3.0720,  
0.6080

■ 42.1430, 27.0980,  
-6.5180

■ 68.4170, -5.5480,  
1.4280

■ 41.4420, 27.6940,  
-6.3060

■ 70.9760, -8.6200,  
2.0360

■ 73.4210, -11.3710,  
2.3330

■ 75.3930, -14.1680,  
3.4640

# Harmonies

## Analogous

The Analogous color harmony consists of three colors that are next to each other on the color wheel.



55.7690, 13.8920, 1.5400



55.2800, 10.7750, -2.5450



54.4640, 4.2650, -5.7110

# Triad

The Triadic color harmony groups three colors that are evenly spaced from another and form a triangle on the color wheel.



55.2800, 10.7750, -2.5450



51.4430, -17.6050, -5.8370



56.5970, 2.9330, 7.4210

# Complementary

The Complementary color scheme is a pair of colors which are on the opposite of each other on the color wheel.



55.2800, 10.7750, -2.5450



47.7200, -10.7750, 2.5450

# Split Complementary

Split-complementary colors differ from the complementary color scheme. The scheme consists of three colors, the original color and two neighbors of the complement color.



55.6390, -6.0530, 5.0750



55.2800, 10.7750, -2.5450



52.2520, -18.3850, -2.7130

# Square

The Square scheme is like the rectangle color scheme, but the four colors are evenly spaced on the color wheel.



55.2800, 10.7750, -2.5450



52.2110, -11.1400, -7.3640



54.2250, -13.7550, 1.4850



56.8920, 9.3520, 6.7280



# Rectangle

The Rectangle color scheme consists of four colors that form a rectangle on the color wheel.



55.2800, 10.7750, -2.5450



53.5990, -0.5490, -6.5730



54.2250, -13.7550, 1.4850



56.5150, 0.2280, 6.8840

# Sweetspot

The Sweet Spot groups the original color and five complimentary colors.



55.2800, 10.7750, -2.5450



80.5120, 4.3100, -1.0180



47.6150, 11.6900, 8.4100



41.1420, 2.4760, -0.8200



171.0000, -0.0000, -0.0000



43.0000, -0.0000, -0.0000



# Same Dimension

The Same Dimension uses a secret algorithm to generate beautiful new colors.



55.2800, 10.7750, -2.5450



70.1620, 16.9190, -3.7610



60.5520, 6.8330, -8.1990



32.0710, 1.2380, -0.4100



63.0490, 41.8620, -9.7700



146.2210, 96.3790, -23.1170



# Inverse Universe

The Inverse Universe completely reimagines the original color for something new.



47.7200, -10.7750, 2.5450



58.2510, -16.6440, 4.2840



42.4480, -6.8330, 8.1990



30.9290, -1.2380, 0.4100



33.9510, -41.8620, 9.7700

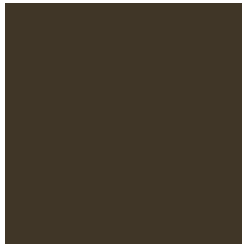


78.3660, -96.6540, 22.5940



# Previews

## White Background



This preview shows how the YIQ color 55.2800, 10.7750, -2.5450 looks on a white background.

## Color Contrast Check

Large Text (above 18pt) WCAG AA ✓ Pass

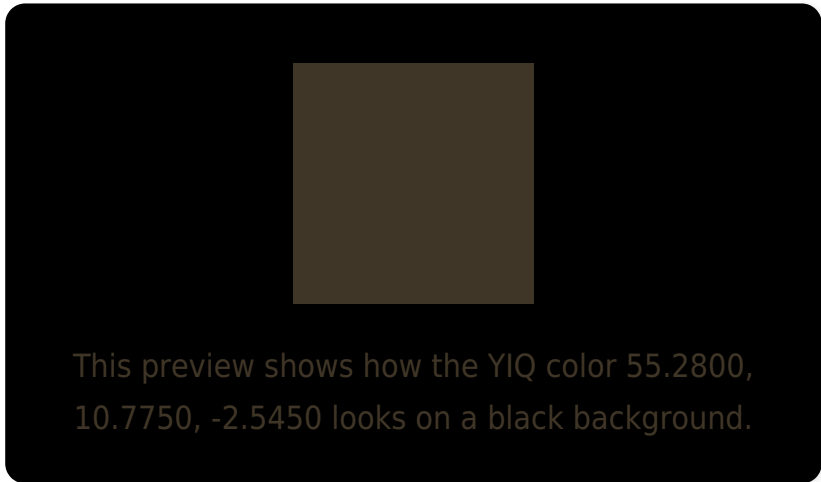
Any Text WCAG AA ✓ Pass

Large Text (above 18pt) WCAG AAA ✓ Pass

Any Text WCAG AAA ✓ Pass



# Black Background



## Color Contrast Check

Large Text (above 18pt) WCAG AA × Fail

Any Text WCAG AA × Fail

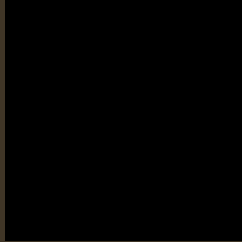
Large Text (above 18pt) WCAG AAA × Fail

Any Text WCAG AAA × Fail

If you want to check with other color combinations, try the [Color Contrast Checker](#).

**YIQ 55.2800, 10.7750, -2.5450**

## **Background**



This preview shows how black text looks on a background with the YIQ color 55.2800, 10.7750, -2.5450.



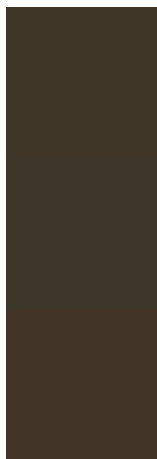
This preview shows how white text looks on a background with the YIQ color 55.2800, 10.7750,

-2.5450.

# Color Blindness Simulation

Color vision deficiency is a very complex topic, and I could not describe the different causes any better than Wikipedia does, so if you want to learn more, you should check out their [article about color blindness](#).

## Dichromacy



### Original Color

55.2800, 10.7750, -2.5450

### Protanopia

54.7850, 7.7950, -3.6050

### Deuteranopia

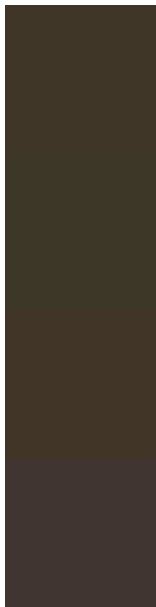
55.2910, 12.2420, -1.5980



## Tritanopia

56.6420, 7.0600, 4.2120

# Trichromacy



## Original Color

55.2800, 10.7750, -2.5450

## Protanomaly

55.0840, 8.3910, -3.3930

## Deuteranomaly

54.9920, 11.6460, -1.8100

## Tritanomaly

56.2460, 8.1150, 1.6110

# Monochromacy



## Original Color

55.2800, 10.7750, -2.5450

## Achromatopsia

55.0000, 0.0000, 0.0000

## Achromatomaly

55.2130, 3.7140, -1.2300

# CSS Examples

## Text

The CSS property to change the color of the text to YIQ 55.2800, 10.7750, -2.5450 is called "color". The color property can be set on classes, ids or directly on the HTML element.

This example shows how text in the color `rgb(64, 54, 39)` looks like.

```
.text, #text, p{  
    color:rgb(64, 54, 39)  
}
```

If you want to add a text shadow in that color use the text-shadow property, you can generate a text shadow directly with our [CSS Text Shadow Generator](#).

Here you see how black text with a 4 pixel rgb(64, 54, 39) colored shadow looks like.

```
.shadow{ text-shadow: 4px 4px 2px rgb(64, 54, 39) }
```

## Border

The CSS property to change the border of an element to YIQ 55.2800, 10.7750, -2.5450 is called "border". The border property can be set on classes, ids or directly on the HTML element.

This example shows the color as border, it can be applied via the CSS property "border" or "border-color".

```
.border, #border, table{ border:4px solid rgb(64, 54, 39) }
```



If only the border color should be changed use the property border-color.

```
.border{ border-color:rgb(64, 54, 39) }
```

If you want to add a box shadow in that color use:

Here you see how a box with a 4 pixel rgb(64, 54, 39) colored shadow looks like.

```
.boxshadow{ -moz-box-shadow:4px 4px 4px  
4px rgb(64, 54, 39); -webkit-box-  
shadow:4px 4px 4px 4px rgb(64, 54, 39);  
box-shadow:4px 4px 4px 4px rgb(64, 54, 39)  
}
```

# Background

The CSS property to change the background color of an element to YIQ 55.2800, 10.7750, -2.5450 is called "background". The background property can be set on classes, ids or directly on the HTML element.

```
.background, #background, body{  
background: rgb(64, 54, 39) }
```

If only the background color should be changed can be used:

```
.background{ background-color: rgb(64, 54,  
39) }
```

This example shows the color as background, it is applied via the CSS property "background".

To optimize and compress your CSS code, you can use our [online CSS compressor and optimizer](#) based on csstidy. If you want to create a linear or radial gradient as background or border, check our [CSS Gradient Generator](#).

Hey! You found this booklet  
interesting? Support Converting  
Colors with the new Membership  
Option!

The pro membership hides all ads, plus gives you  
double the colors in the color bucket, and more  
awesome pro features!

**[Learn more, Memberships starting at \\$2.50/m!](#)**

**Follow me  
on Twitter!**

@ConvertingColor